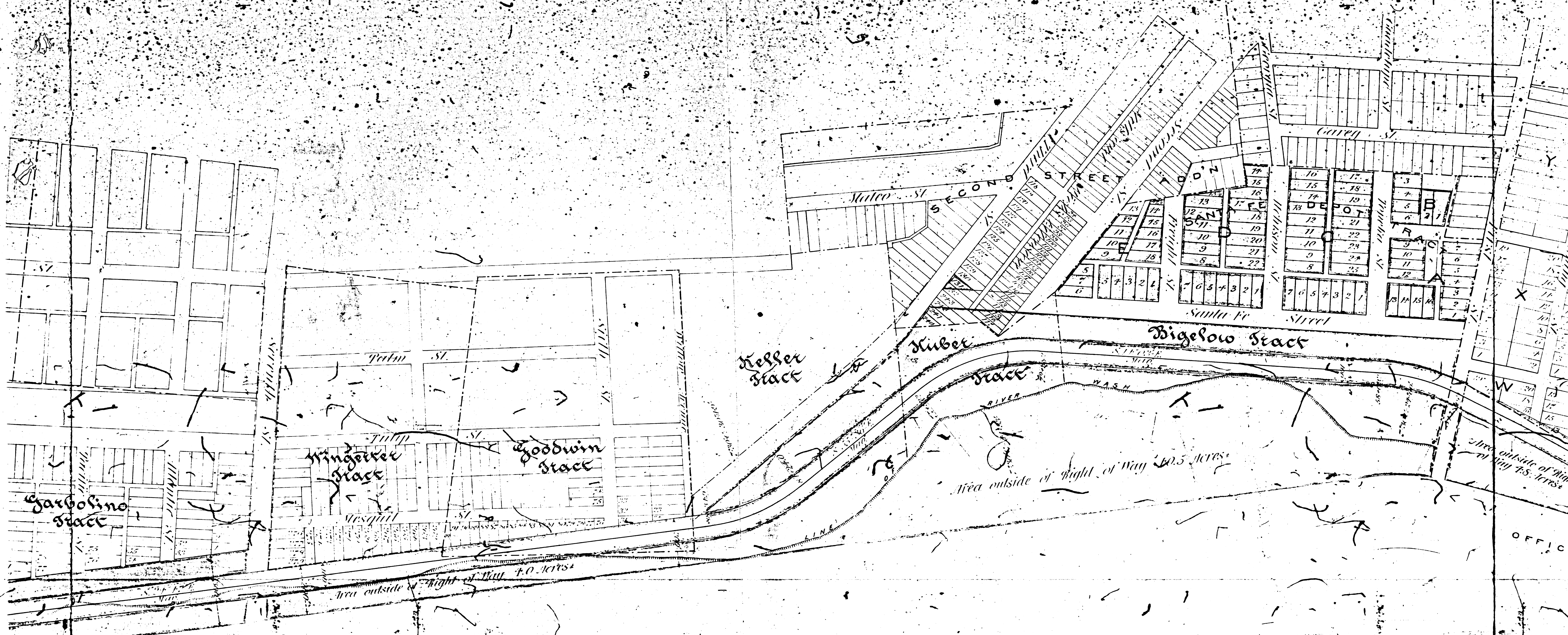
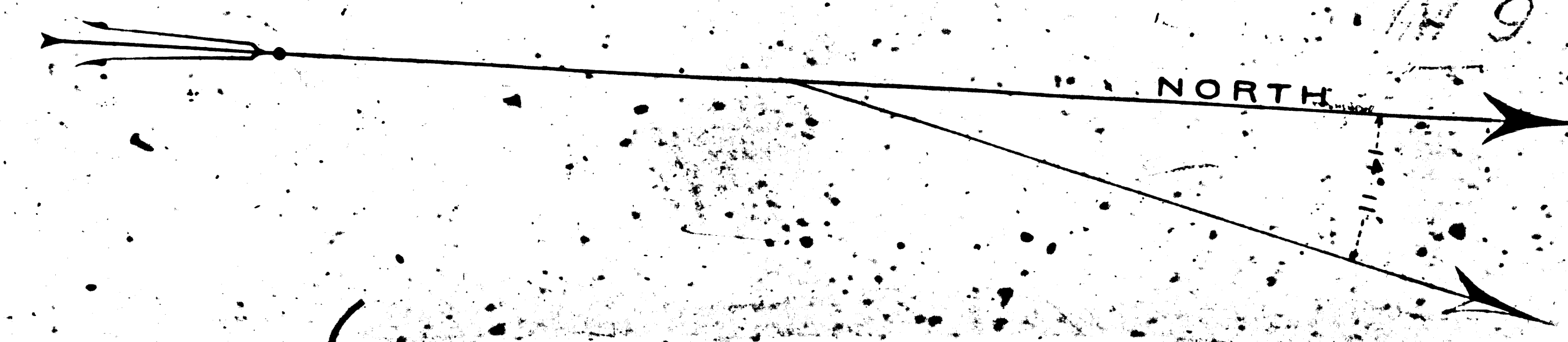


FM 16400
 A1 OF A3

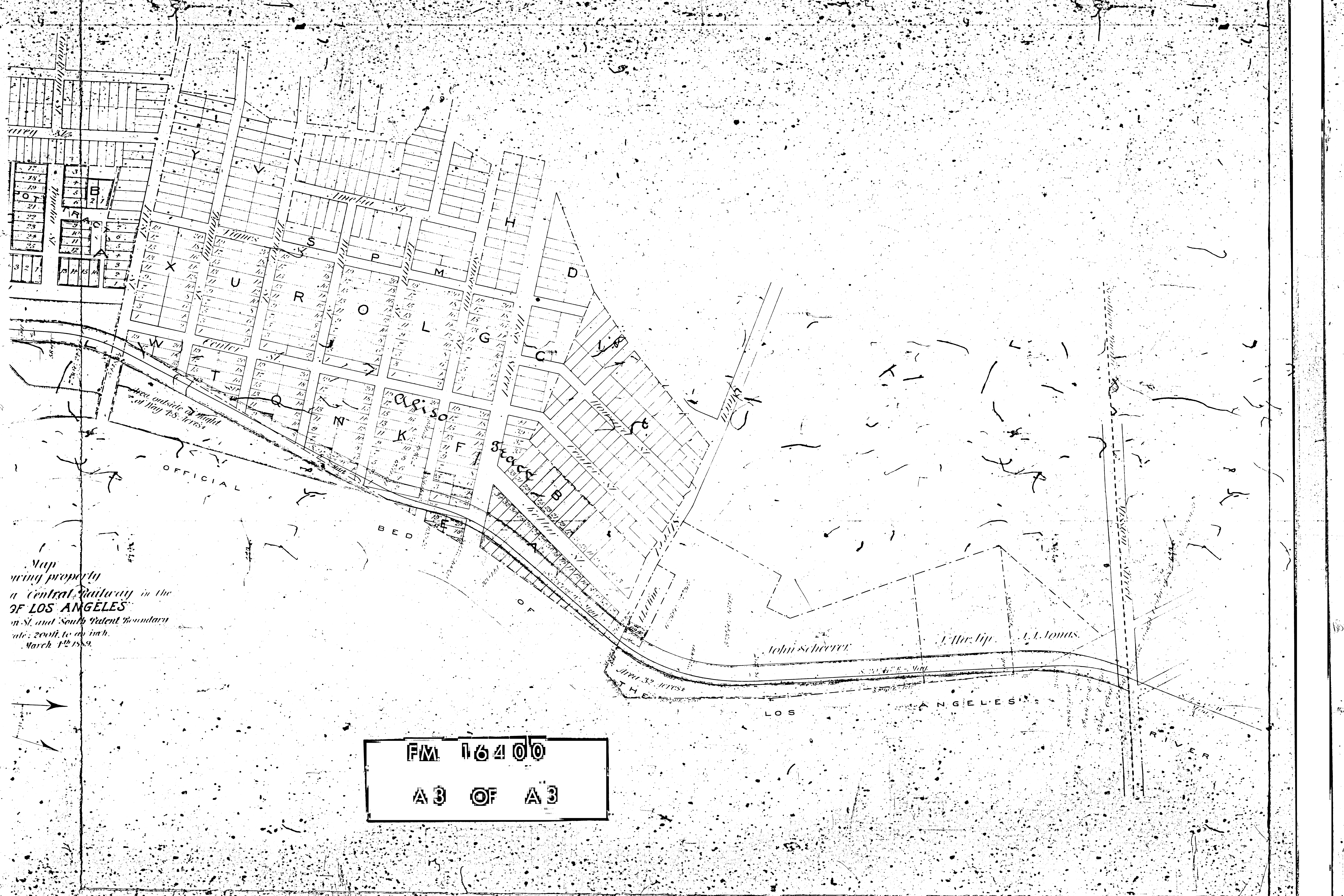


Map
 showing property
 of the California Central Railway in the
CITY OF LOS ANGELES
 between Mission St. and South Valent boundary
 Scale: 200ft. to an inch.
 March 1st 1889.



FM 16400
 A 2 OF A 3

ANGELES RIVER



Map
 showing property
 in Central Railway in the
 OF LOS ANGELES
 in St. and South Patent Boundary
 scale: 200ft. to an inch.
 March 1st 1889.

John Scheerer J. Harbige J. A. Jones

LOS ANGELES

FM 16400
 A 3 OF A 3