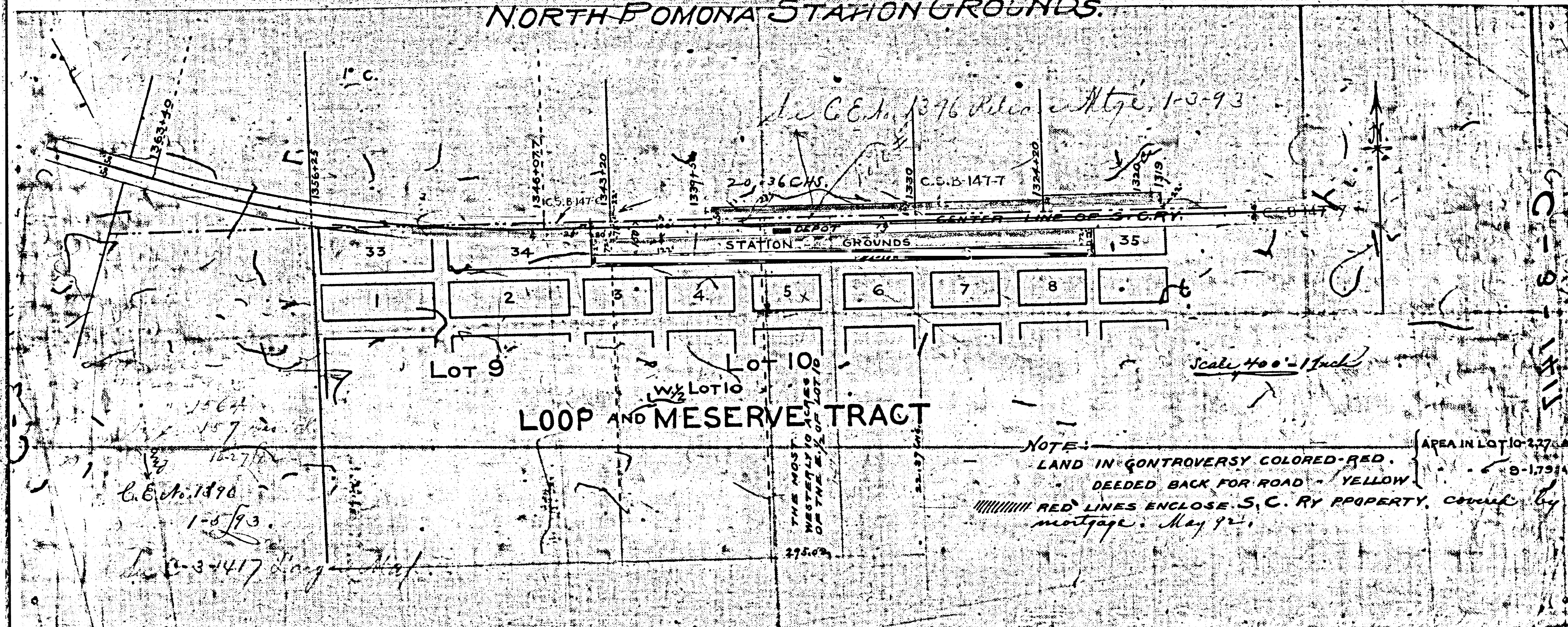


NORTH POMONA STATION GROUNDS.



1564
157
1627
C.E. No. 1370
1-5-93
C.S. B. 147-7

C.E. No. 1376
C.S. B. 147-7
C.E. No. 1370
C.S. B. 147-7

NOTE:
LAND IN CONTROVERSY COLORED RED.
DEEDED BACK FOR ROAD YELLOW
RED LINES ENCLOSE S.C. RY PROPERTY covered by mortgage May 92.

F.M. 16412-1