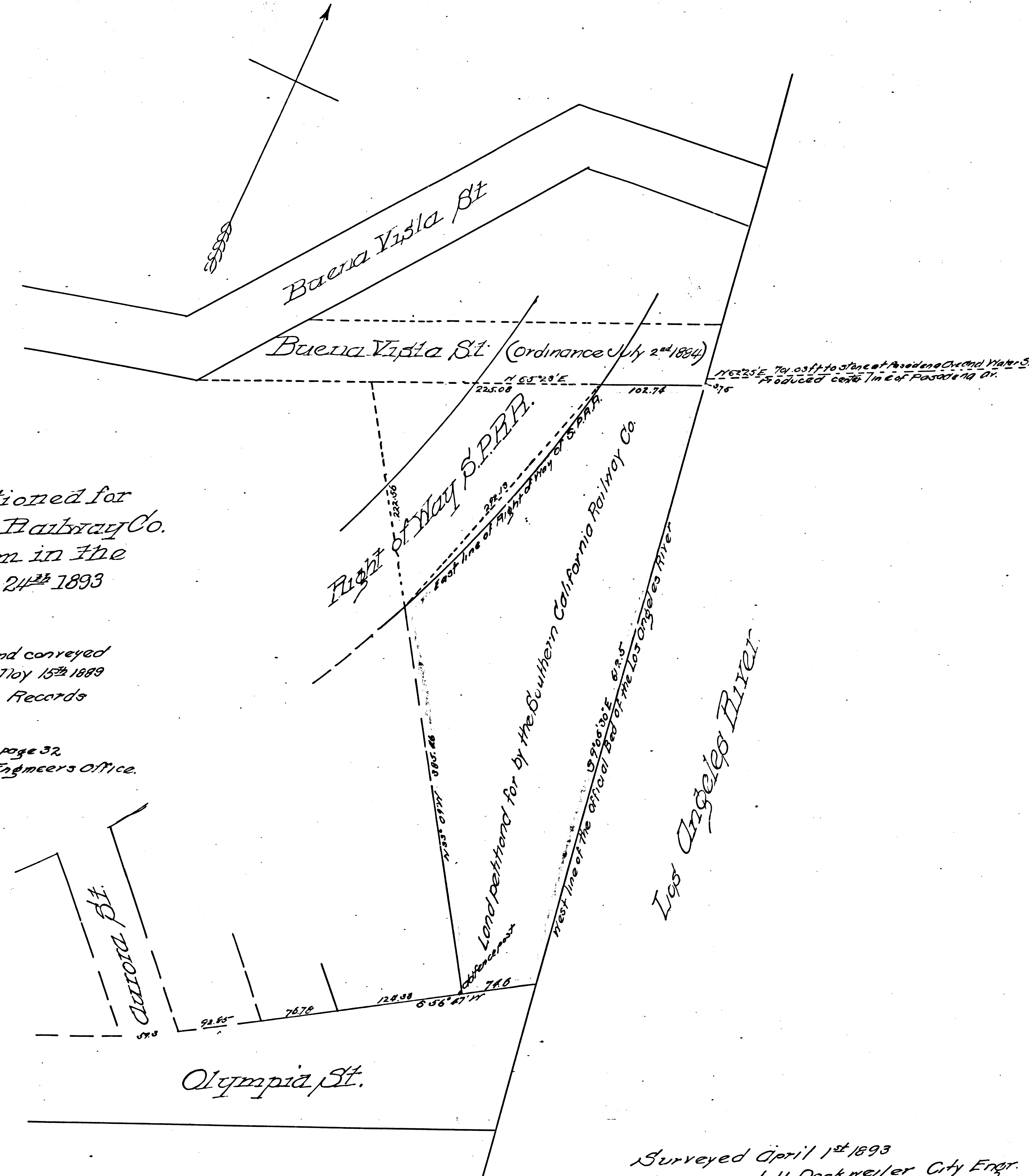


Plat showing the land petitioned for by the Southern California Railway Co. as per abstract filed by them in the office of the City Clerk Jan 24th 1893

The land herein petitioned for is the same land conveyed by C. W. Smith to J. J. McCook by deed dated May 15th 1889 and recorded in Book 616 page 60 of Deeds Records Los Angeles Co. Cal.

Field Book 423 page 32
City Engineers Office.



Surveyed April 1st 1893
J. H. Dockweiler City Engr.
Scale 100 ft to 1 inch.

16431 F.M. 16431

FILED MAP NO. 16431
Copied from S.C.R.R.
blue print.