

In City of South Pasadena
March 1896
Scale 100 ft. to an inch
South line East Columbia St.
Original Right of Way of S.C. Ry.
Center Line of Relocated S.C. Ry.
Boundary Line
W.C. Co. of Edwards Tract
of Worthington Addition

Map
Showing Change of Line
at
South Pasadena.
S.C. Ry.
Dec. 24th 95
Scale - 50 ft. to an Inch
Index #8

GLEN AVENUE.

BLOCK C
Fell's Subdivision

RELOCATION - MAIN TRACK

OLD MAIN TRACK

BLOCK 4
Collier & Graham's
Addition

BLOCK 1

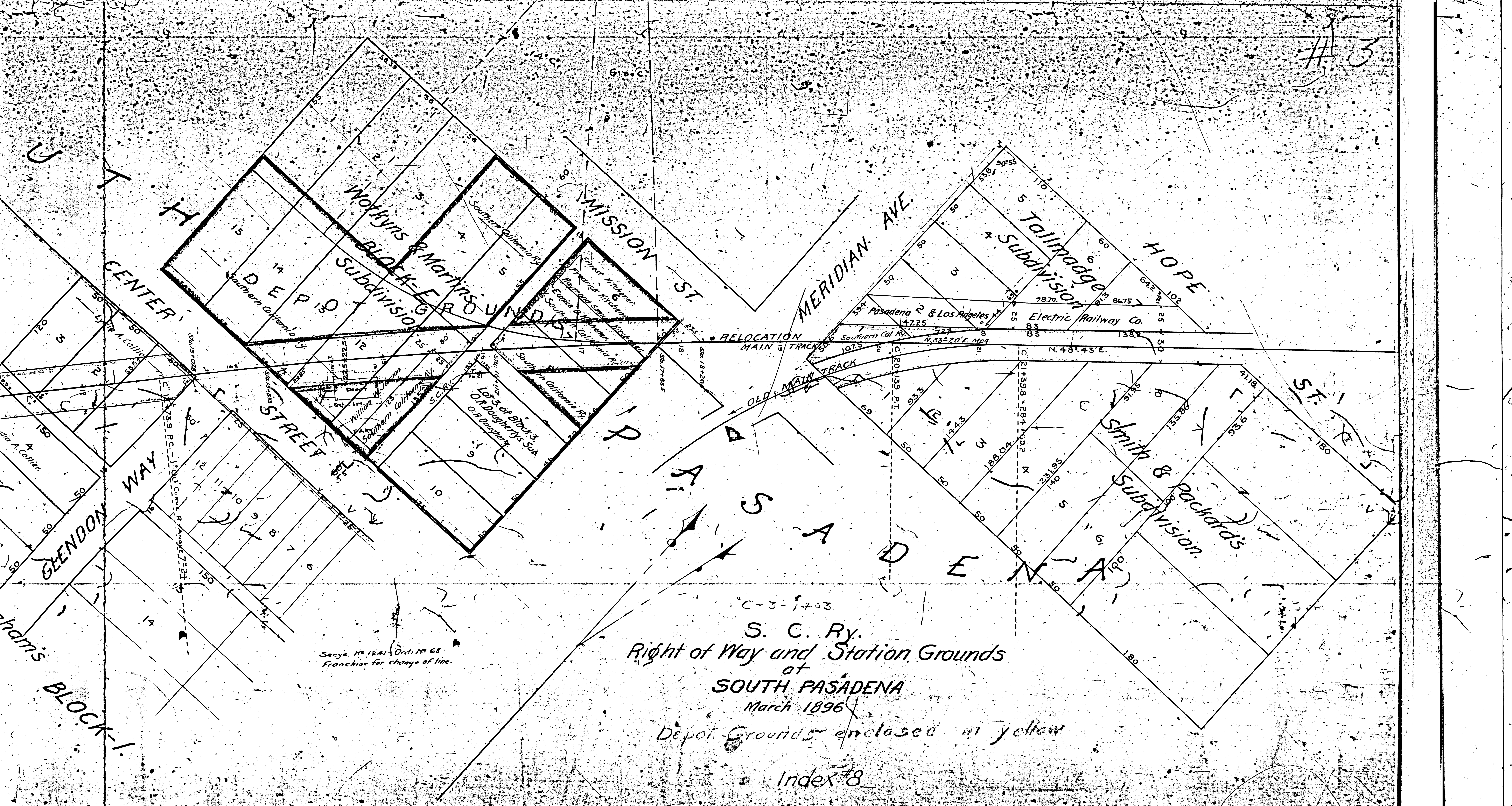
S O U T H
C E N T R A L

GLENDON WAY

FM 16432

A1 OF A2

#3



Secy's. No. 1241 Ord. No. 68.
Franchise for change of line.

C-3-1403
S. C. Ry.
Right of Way and Station Grounds
at
SOUTH PASADENA
March 1896
Depot Grounds enclosed in yellow

Index #8

FM 16432
A2 OF A2