

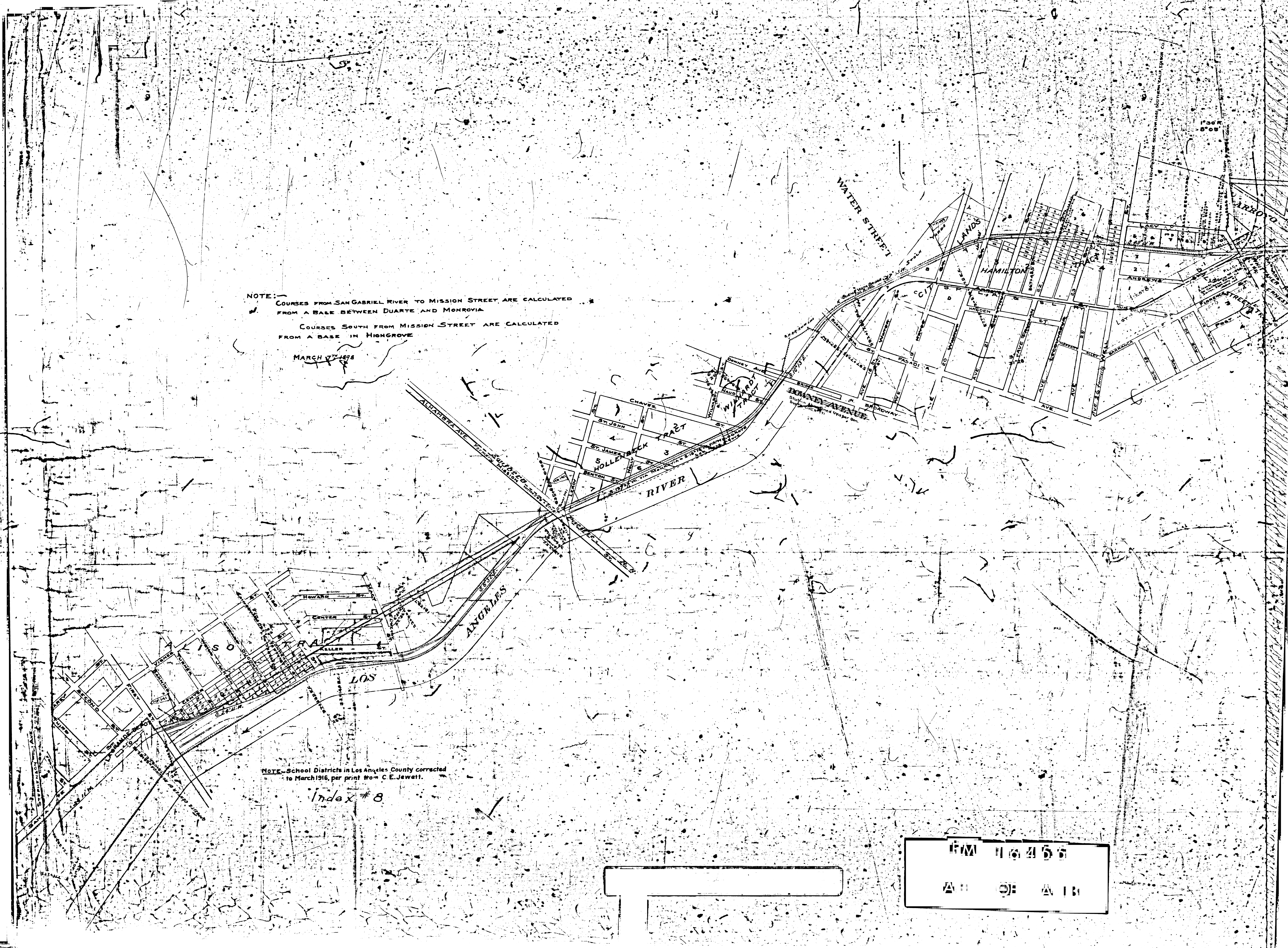
NOTE: COURSES FROM SAN GABRIEL RIVER TO MISSION STREET ARE CALCULATED FROM A BASE BETWEEN DUARTE AND MONROVIA
 COURSES SOUTH FROM MISSION STREET ARE CALCULATED FROM A BASE IN HIGHGROVE

MARCH 17 1898

NOTE: School Districts in Los Angeles County corrected to March 1916, per print #800 C.E. Jewett.

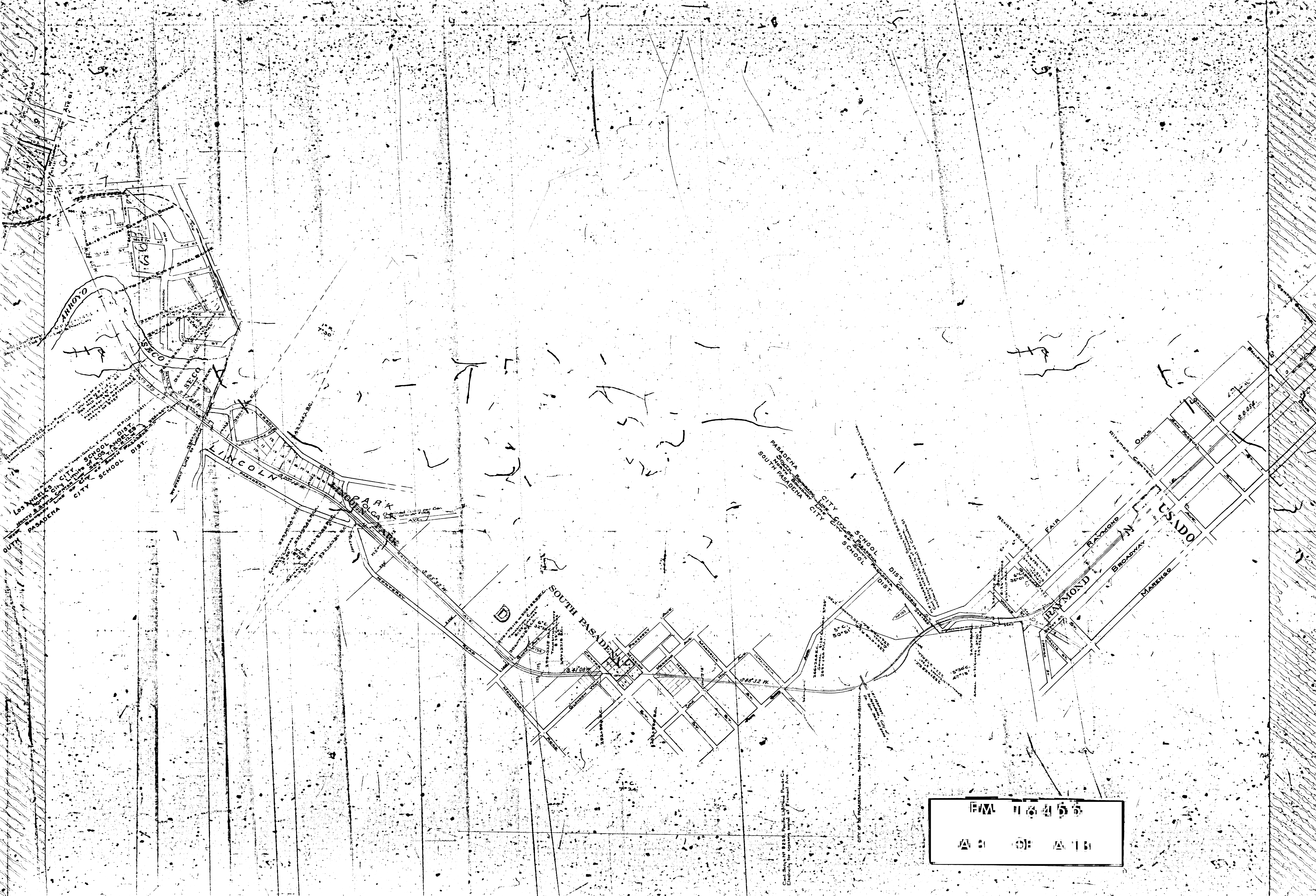
Index # 8

16456
 A B C D E F G H I J K L M N O P Q R S T U V W X Y Z





FW 16455
A 2 OF A 13



Los Angeles City School Dist.
Pasadena City School Dist.

PASADENA
SOUTH PASADENA

CITY SCHOOL DIST.
CITY SCHOOL DIST.

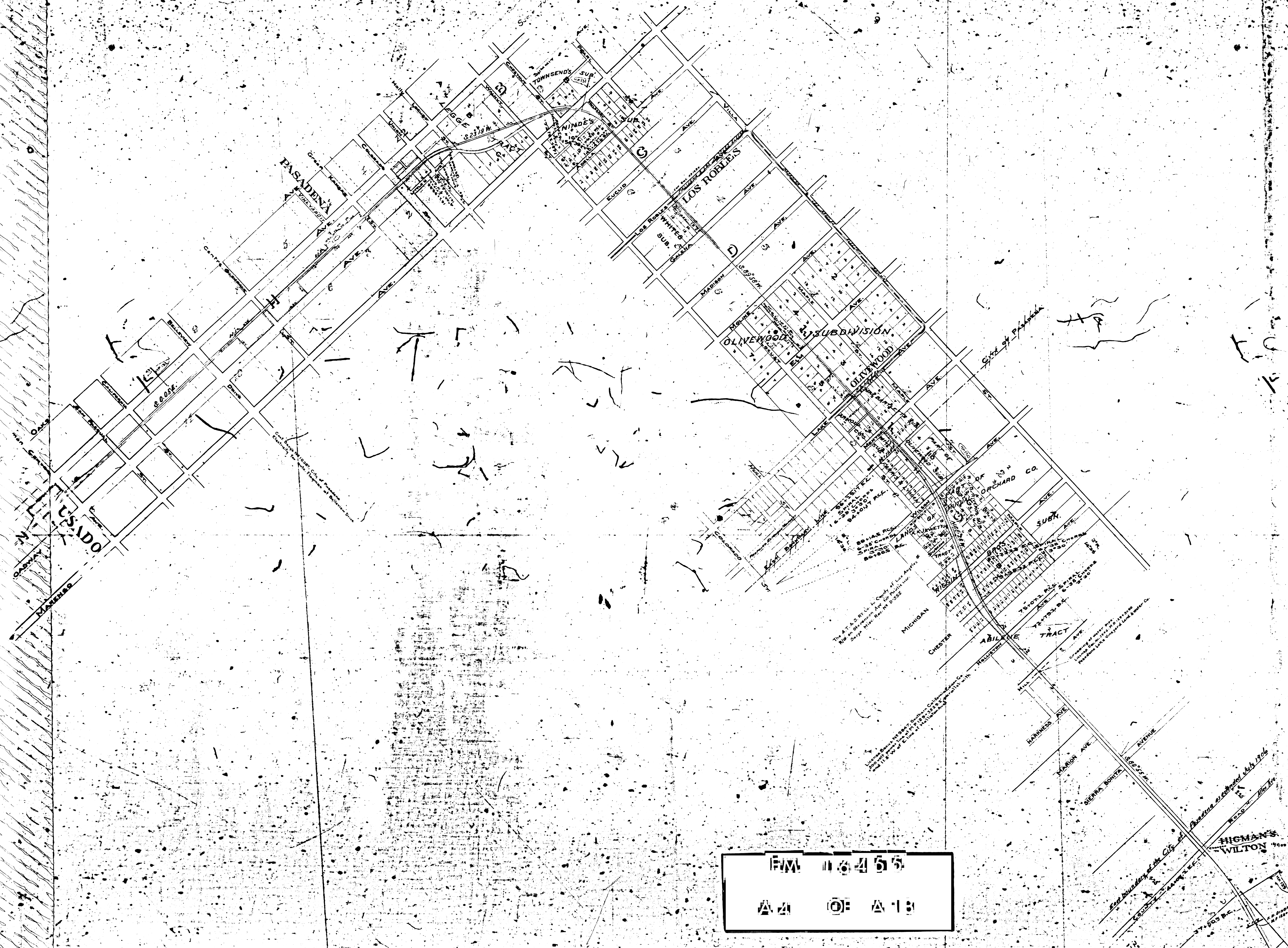
SOUTH PASADENA

RAYMOND
BROADWAY
USADO

City of Pasadena, Public Lighted Power Co.
Electricity for covering lamp at Fremont Ave.

CITY OF PASADENA - License No. 11281 - 8' x 11' - 1/2"

FWA 11 6 4 5 5
A 1 0 1 1 1



1/4 MILE
 1 2 3 4 5
 A 21 O 13

PASADENA PARK TO SAN ANTONIO

LAMANDA PARK

EAST HONOLULU SCHOOLS DISTRICT

PALMVIEW CITY

SANTA ANITA

CHAPMAN

L.A. Buffer 20 Acres

SCHOOL DIST. DIST.

SCHOOL DIST. DIST.

CHAPMAN

116455

AS OF 11/11

THE CITY OF LOS ANGELES
PLANNING DEPARTMENT
100 N. GARDEN ST.
LOS ANGELES, CALIF. 90012

100' WIDE

100' WIDE

100' WIDE

100' WIDE

100' WIDE

100' WIDE

100' WIDE

100' WIDE

100' WIDE

100' WIDE

100' WIDE

100' WIDE

100' WIDE

100' WIDE

100' WIDE

100' WIDE

100' WIDE

100' WIDE

100' WIDE

100' WIDE

100' WIDE

100' WIDE

100' WIDE

100' WIDE

100' WIDE

100' WIDE

100' WIDE

100' WIDE

100' WIDE

CITY OF ARCADIA
2.88 Mi. Main Track in City

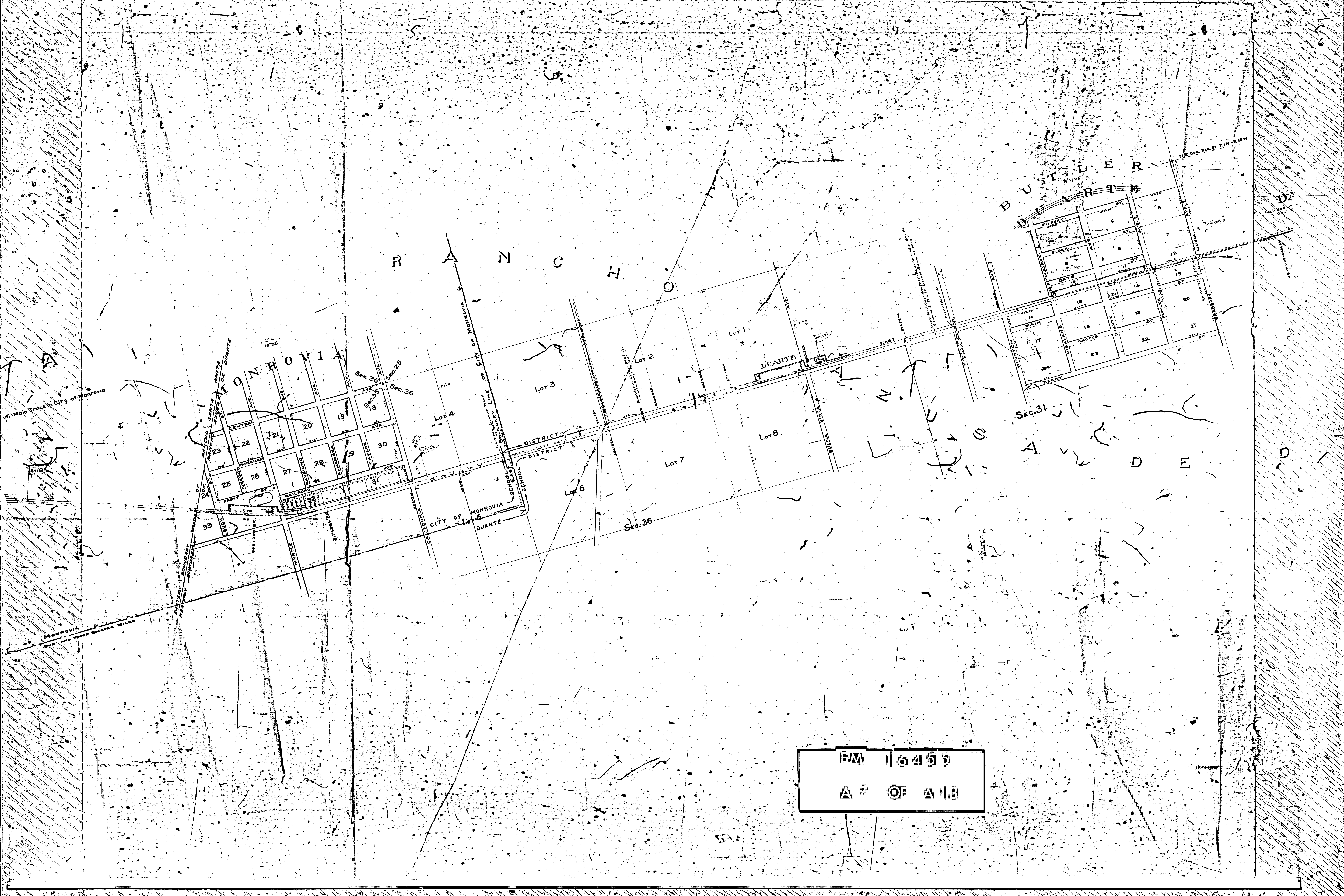
2° C.
37' 53"



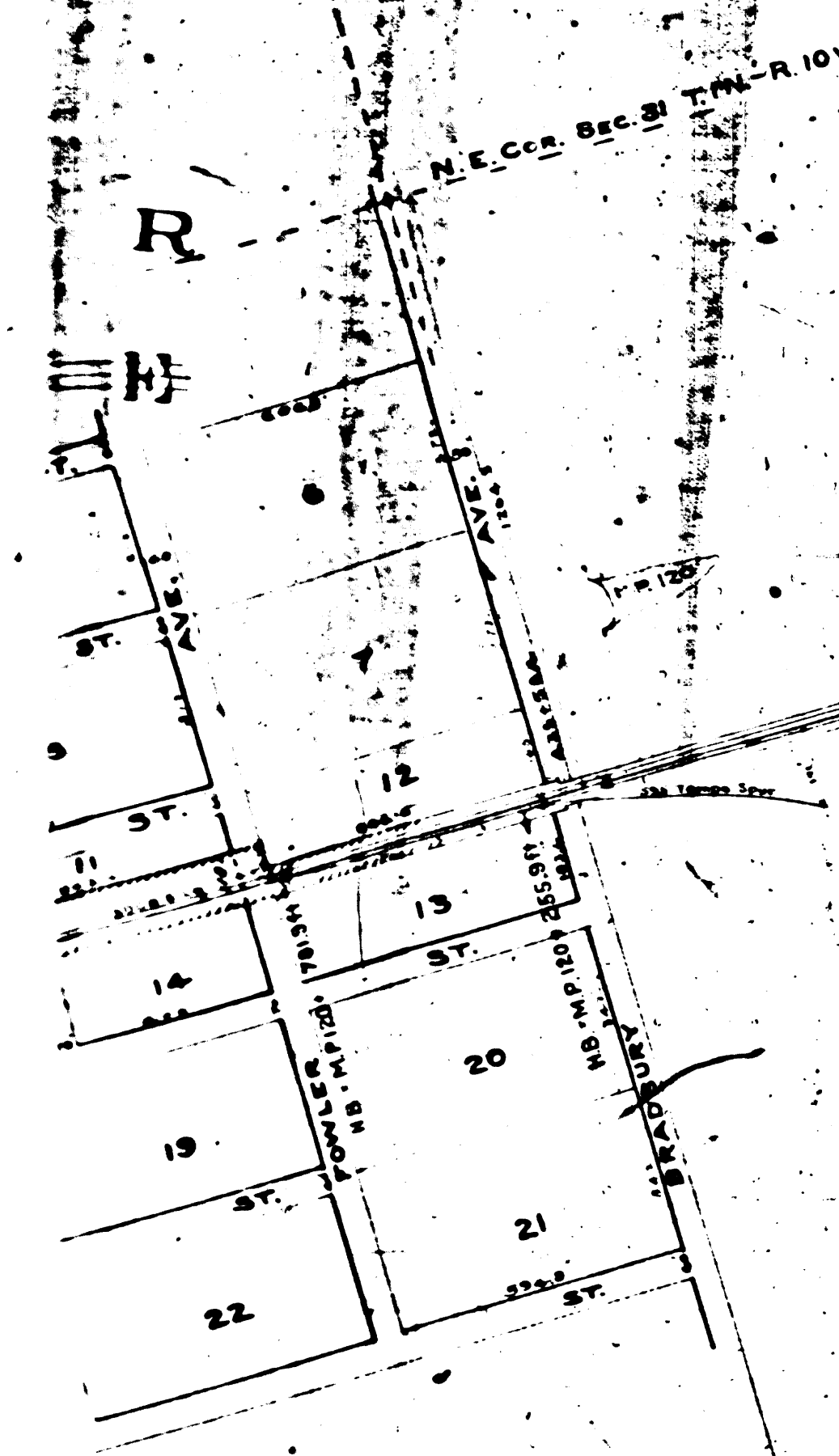
1.82 Mi. Main Track in City of Monrovia

SOUTH BOUNDARY LINE OF CITY OF MONROVIA
ONE AND THREE EIGHTS

FIM 116455
A6 OF A1B



1:6450
1 OF 1:13



DAVISSON
 Included in BUTLER Station Limits
 Gen. State Circular No. 136

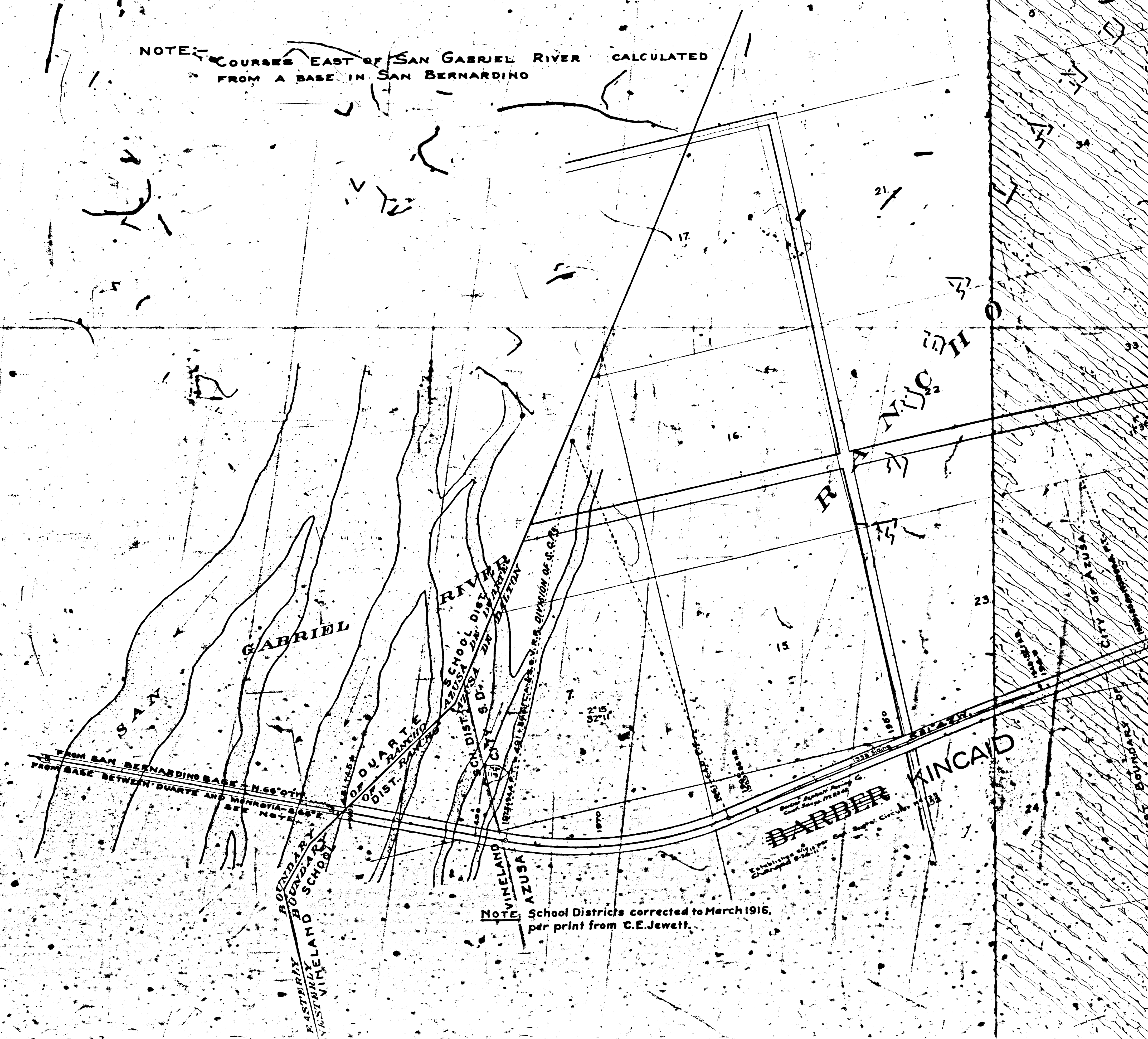
32

NOTE: School Districts corrected to March 1916,
 per print from C.E. Jewett.

NOTE: COURSES EAST OF SAN GABRIEL RIVER CALCULATED
 FROM A BASE IN SAN BERNARDINO

NOTE: COURSES FROM SAN GABRIEL RIVER TO MISSION ST. LOS ANGELES
 ARE CALCULATED FROM A BASE BETWEEN DUARTE AND MONROVIA

16455
 16455



NOTE: School Districts corrected to March 1916,
 per print from C.E. Jewett.



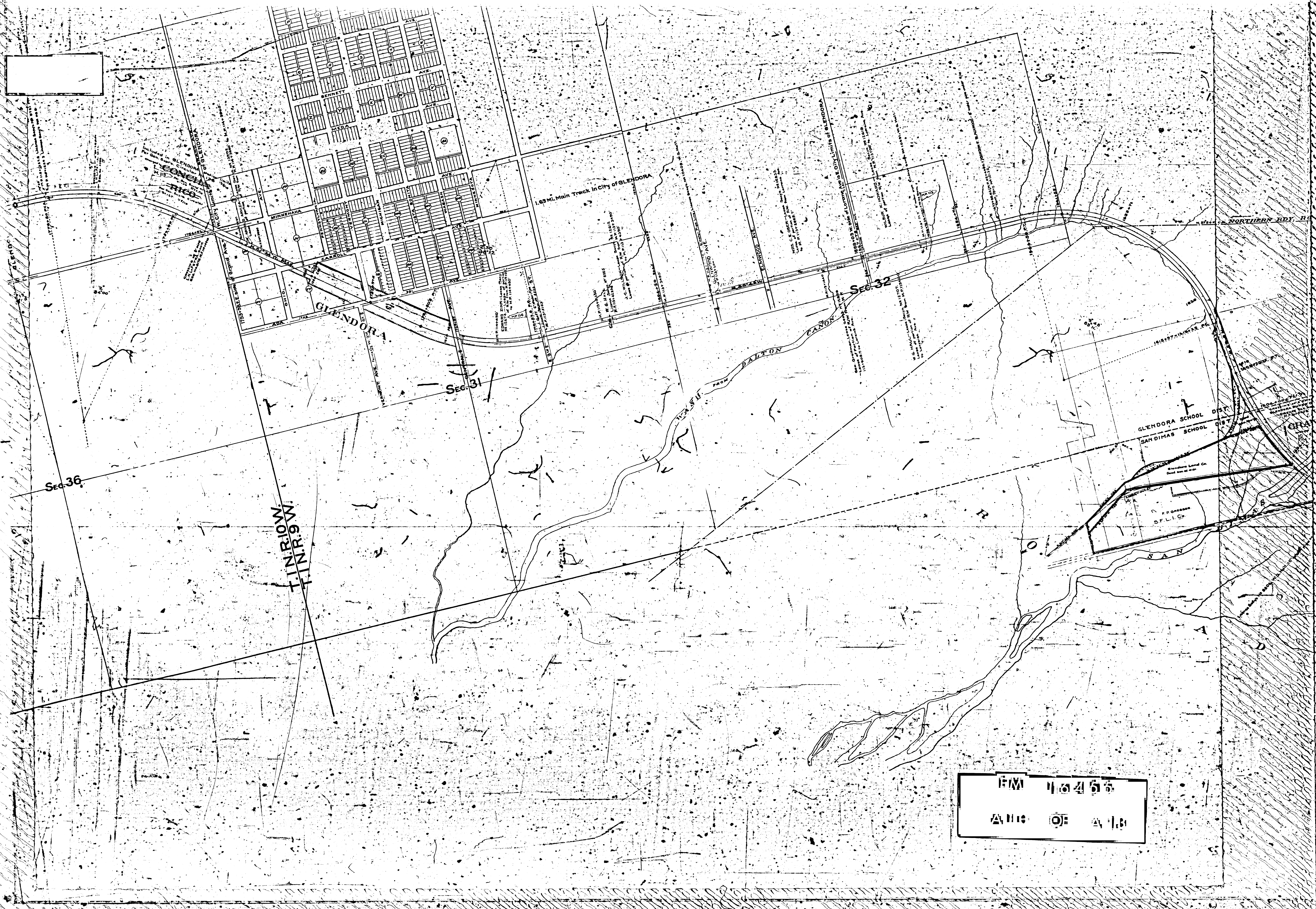
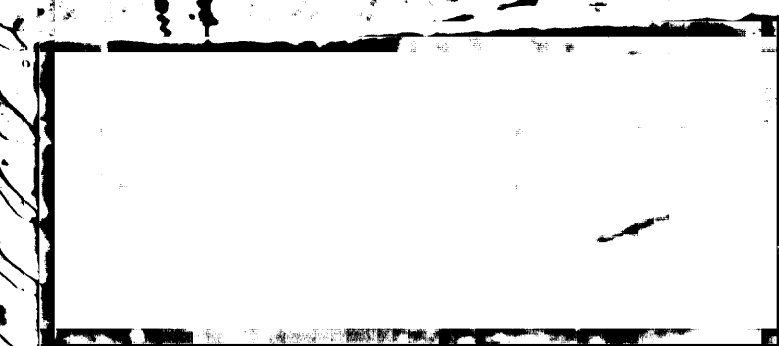
C O M M U N I T Y

A Z U S A

D A L T O N

SEC-36

FM 116455
A9 OF A13



1.63 Mi. Main Trunk in City of GLENDORA

T.1N.R.10W.
T.1N.R.9W.

SEC. 36

SEC. 31

SEC. 32

GLENDORA SCHOOL DIST.
SAN DIMAS SCHOOL DIST.

1:24,000
S.F.L.I. Co.

NORTHERN B'DY. RO. ADDN. SAN JOSE

SAN B'DNO. BASE LINE

INDORA SCHOOL DIST.
INDORA SCHOOL DIST.
GRAVEL SPUR
FORBS

License No. 117 8225, Postal - Telegraph Cable Co.
Pole Line on R. of W. Berkeley to San Diego
License No. 104 074, Postal - Telegraph - Cable Co.
Pole Line on Sta. Grande, Berkeley to San Diego

J O S E



PLAT 16455
A T O F A I

SAN JOSE
CITY OF SAN JOSE
CITY ENGINEER
CITY OF SAN JOSE

RECORD OF PACIFIC LAND IMPROVEMENT CO. LEASES

Lease No. 5714	W. W. WILSON & ROBERT WILLIAMS—Lots 10-14-15, 11, 13
Lease No. 5715	E. GARCIA—Lots 16-17 & 20, Blk. 100
Lease No. 9379	FRANK PALOMARES—Lots 10 to 24, Blk. 51 & Lot 7, Blk. 101
Lease No. 10112	JOHN A. WASTON—Lot 20, Blk. 80
Lease No. 10113	W. S. ROMICK—All of Blk. 7
Lease No. 10235	W. C. DOUGHTY—Lots 13 & 14, Blk. 31
Lease No. 10235	VALENTINE PEYTON—Blk. 8, 9-14-15
Lease No. 11237	H. E. CURLEE—Blk. 20-21, 22, 23, 24, 25, 26, 27, 28, 29, 30, 31, 32, 33, 34, 35, 36, 37, 38, 39, 40, 41, 42, 43, 44, 45, 46, 47, 48, 49, 50, 51, 52, 53, 54, 55, 56, 57, 58, 59, 60, 61, 62, 63, 64, 65, 66, 67, 68, 69, 70, 71, 72, 73, 74, 75, 76, 77, 78, 79, 80, 81, 82, 83, 84, 85, 86, 87, 88, 89, 90, 91, 92, 93, 94, 95, 96, 97, 98, 99, 100
Lease No. 11920	HAYWARD LER & INV. CO.—Lot 1, Tract 2700 (see map)
Lease No. 12720	FRANK PALOMARES—Lots 9 & 14, Blk. 101
Lease No. 12720	J. B. STAYER—Lots 9 & 10, Blk. 101
Lease No. 13354	H. E. CURLEE—Lots 20-23, 25, 26, 27, 28, 29, 30, 31, 32, 33, 34, 35, 36, 37, 38, 39, 40, 41, 42, 43, 44, 45, 46, 47, 48, 49, 50, 51, 52, 53, 54, 55, 56, 57, 58, 59, 60, 61, 62, 63, 64, 65, 66, 67, 68, 69, 70, 71, 72, 73, 74, 75, 76, 77, 78, 79, 80, 81, 82, 83, 84, 85, 86, 87, 88, 89, 90, 91, 92, 93, 94, 95, 96, 97, 98, 99, 100
Lease No. 13565	H. E. CURLEE—Lots 14 & 15, 16 & 17, 18 & 19, 20, 21, 22, 23, 24, 25, 26, 27, 28, 29, 30, 31, 32, 33, 34, 35, 36, 37, 38, 39, 40, 41, 42, 43, 44, 45, 46, 47, 48, 49, 50, 51, 52, 53, 54, 55, 56, 57, 58, 59, 60, 61, 62, 63, 64, 65, 66, 67, 68, 69, 70, 71, 72, 73, 74, 75, 76, 77, 78, 79, 80, 81, 82, 83, 84, 85, 86, 87, 88, 89, 90, 91, 92, 93, 94, 95, 96, 97, 98, 99, 100
Lease No. 13566	GEORGE A. CROOD—Lots 20, Blk. 82
Lease No. 13567	BEN RALEY—Lots 18 & 19, Blk. 17
Lease No. 13568	H. E. CURLEE—Lots 24 & 25, Blk. 92
Lease No. 13569	H. E. CURLEE—Lots 24 & 25, Blk. 92
Lease No. 13570	ARTHUR PALOMARES—Lots 24 & 25, Blk. 92
Lease No. 13772	R. H. MOORE—Lots 14 & 15 & 20, Blk. 72

FM 116495
 A 11 2 0 113



SAN DIMAS DISTRICT
 OF THE COUNTY OF POMONA
 SCHOOL DISTRICT
 OF THE COUNTY OF POMONA
 LORDSBURG CREEK
 CUCAMONGA

LORDSBURG CREEK
 CUCAMONGA
 1.36 Mi. Main Track in City of POMONA

Sec. 10



CITY OF CLAREMONT
ORDER PASSED BOARD OF SUPERVISORS
SEPT. 20th 1907 - 6th CLASS
1.87 Miles of Main Track in City

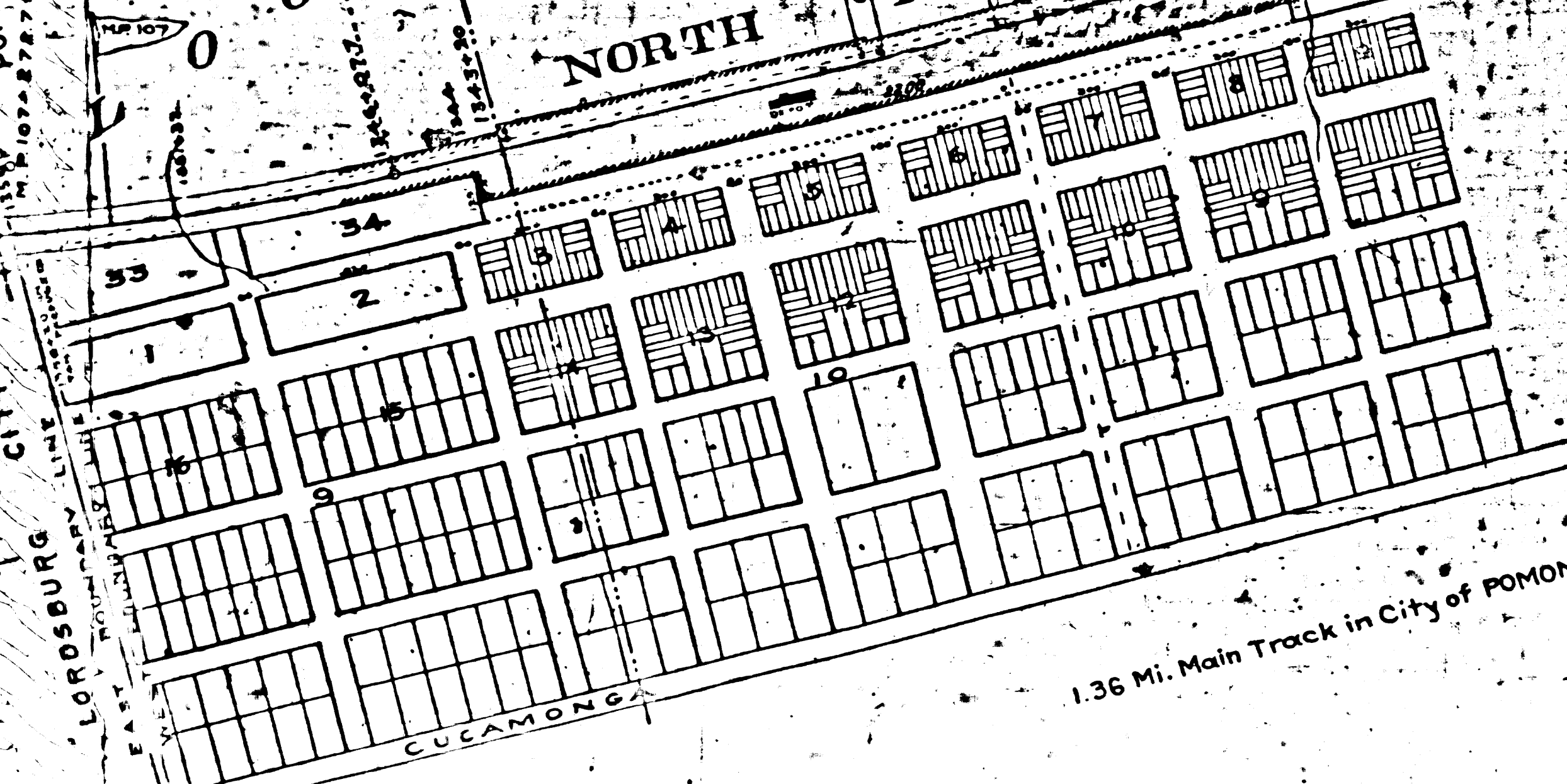
NOTE: School Districts in Los Angeles County corrected to March 1916 per print from C.E. Jewett.

F.M. 116455
A 113 OF A 131

NORTH POMONA

S E R V I C E

P O M O N A



1.36 Mi. Main Track in City of POMONA

LORDBURG CITY

POMONA CITY

CLAREMONT CITY

CLAREMONT CITY