

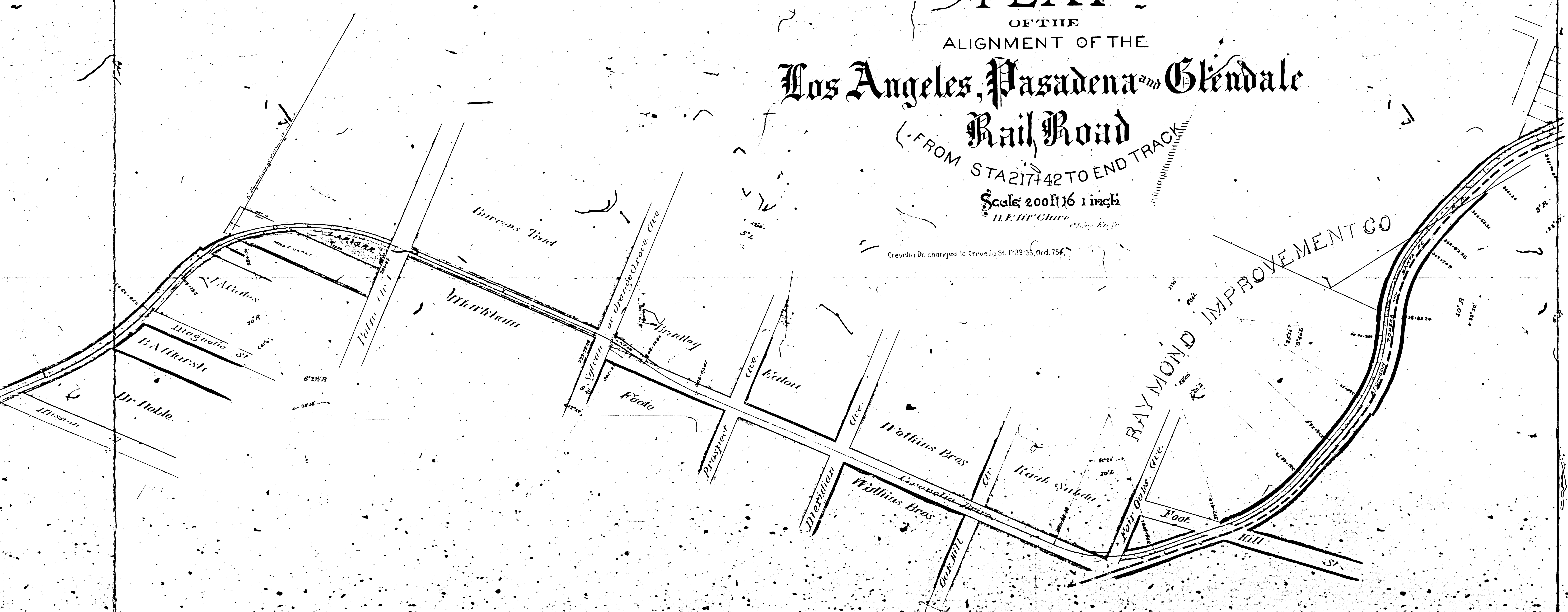


PLAT  
OF THE  
ALIGNMENT OF THE  
**Los Angeles, Pasadena and Glendale**  
Rail Road

FROM STA 217+42 TO END TRACK

Scale 200 ft to 1 inch  
H. E. W. Clark

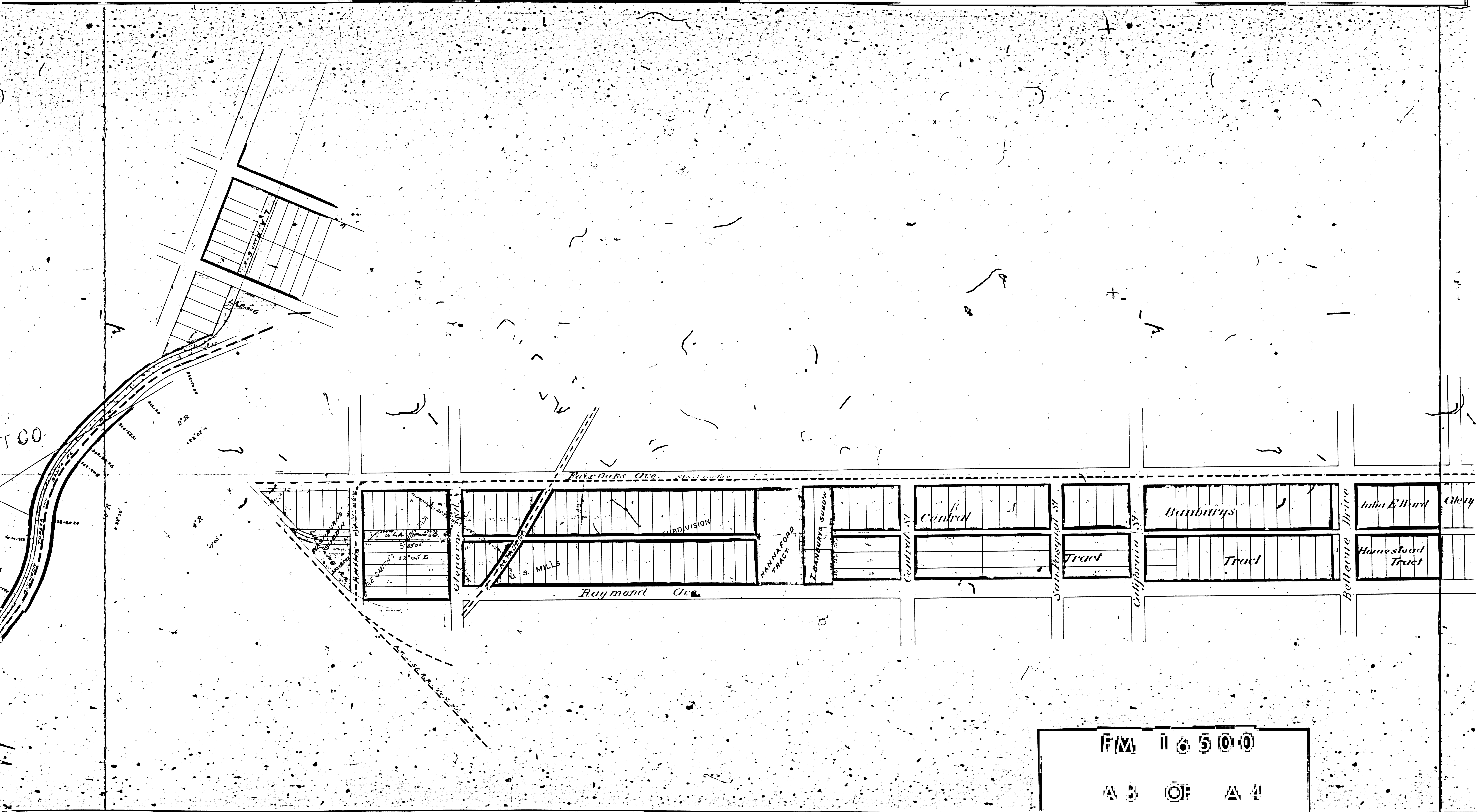
Crevella Dr. changed to Crevella St. D-88-33, Ord. 756



10 5 0 10

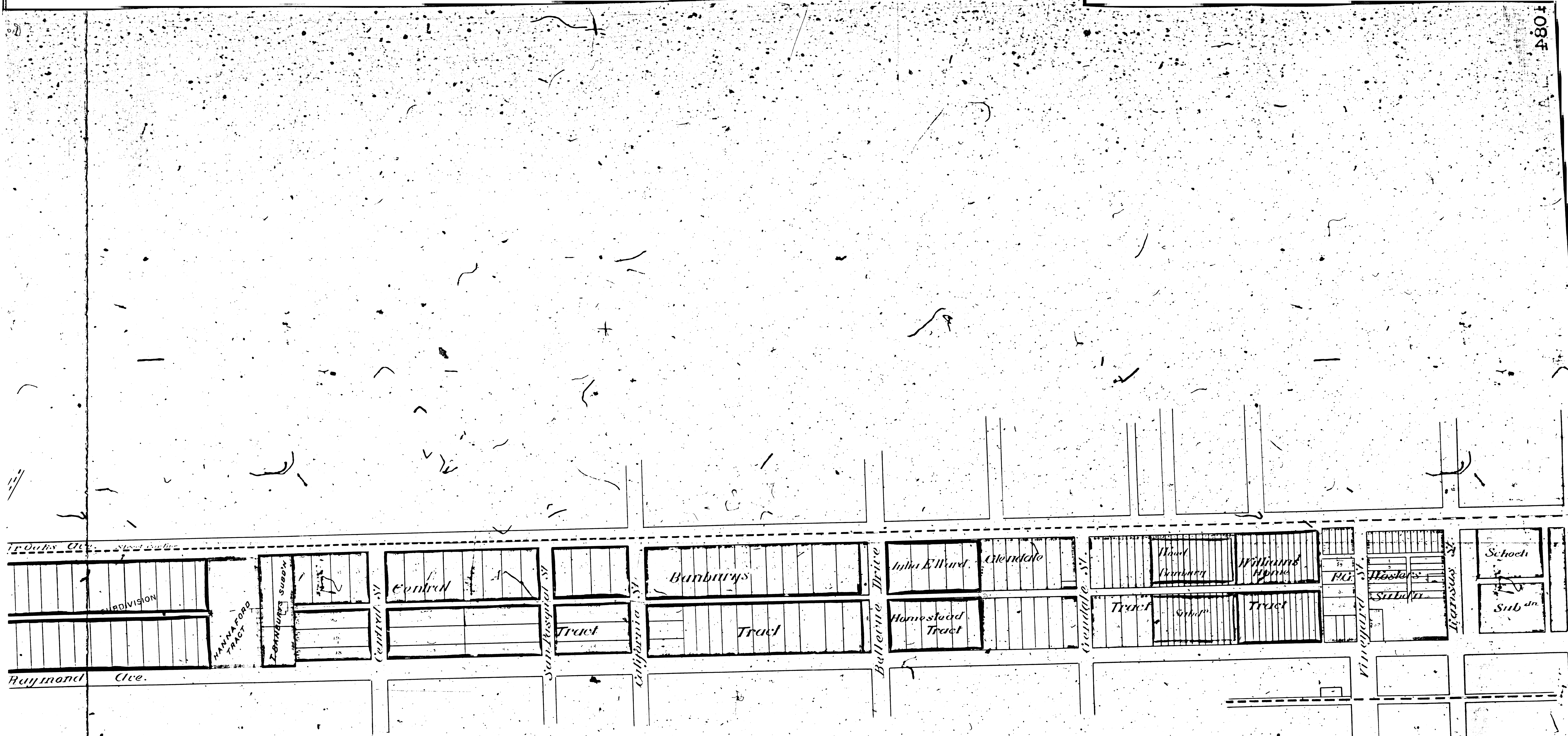
A 2 OF A 4





F/M 11 6 5 0 0  
 A 3 OF A 4





F/M 116500  
 A 4 OF A 4

No. 1084