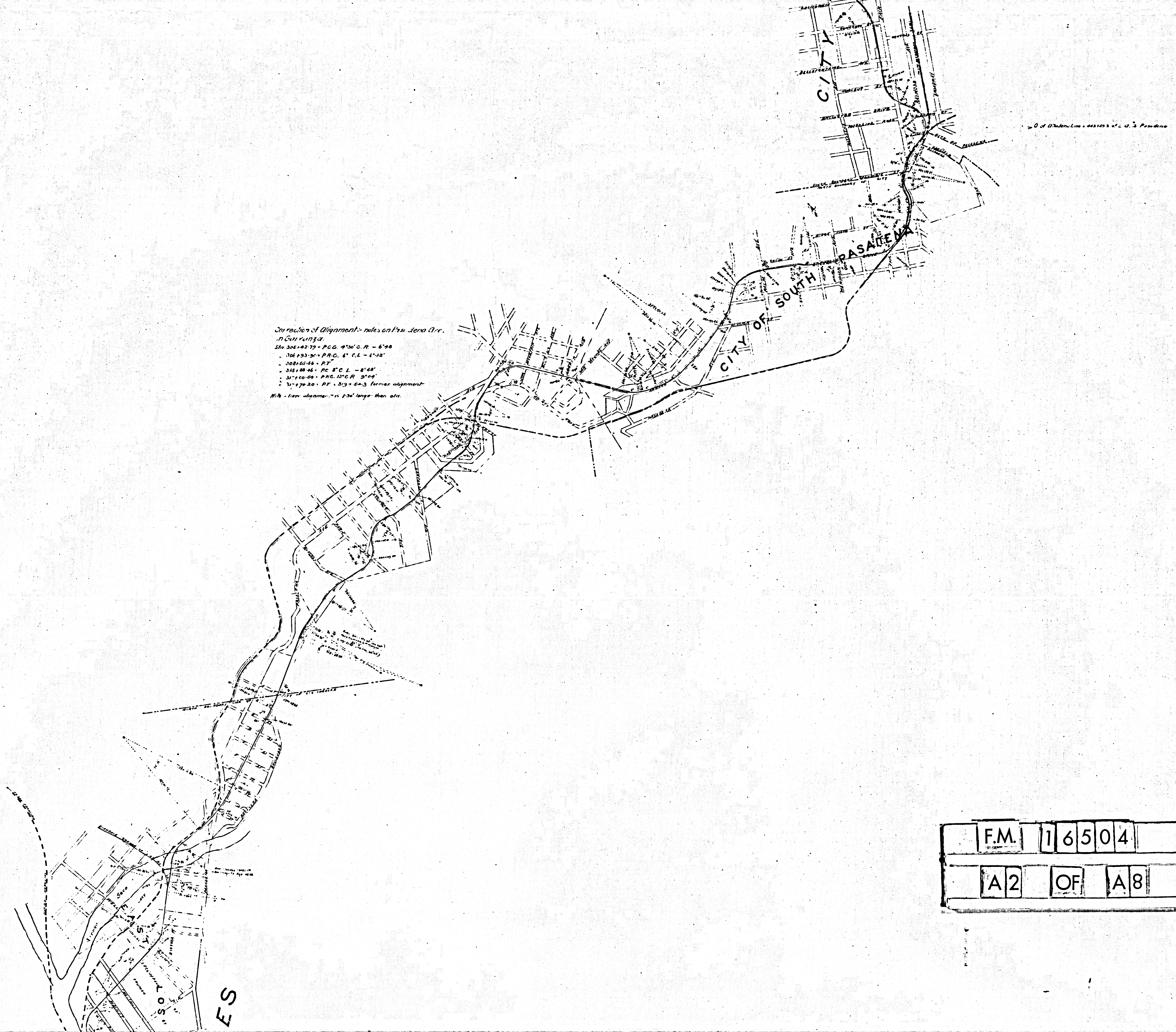
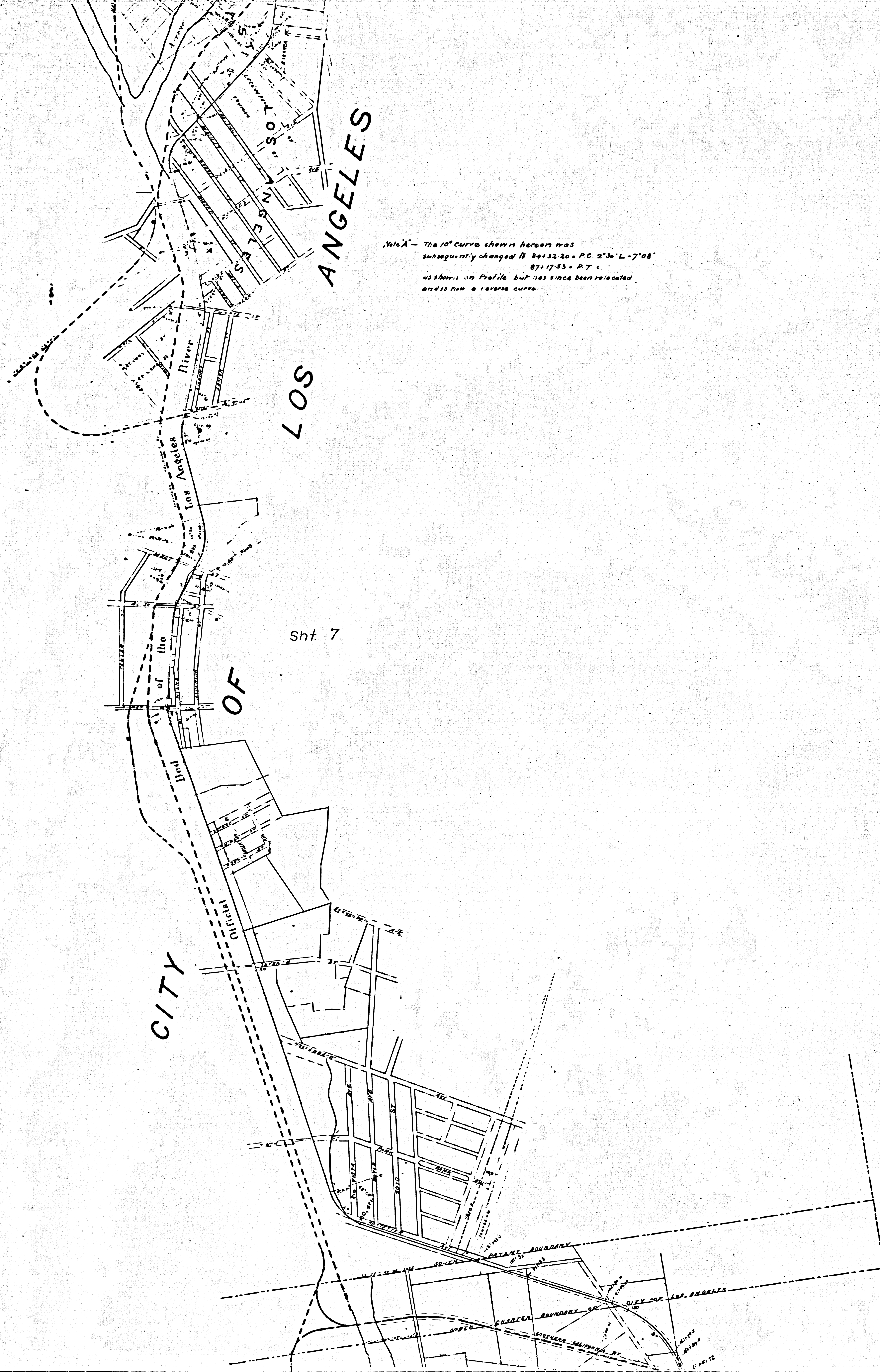


F.M.	1	6	5	0	4
A1		OF		A8	



Direction of Alignment - notes on Pas. Jena Ave.
 in Gen. Plan 1933.
 Sta. 304+42.75 - P.C. 4°20' C.R. - 6°58'
 - 306+193.94 - P.R.C. 6° C.L. - 4°12'
 - 308+100.00 - P.T.
 - 315+00.00 - P.C. 8° C.L. - 8°48'
 - 317+00.00 - P.R.C. 15° C.R. 5°04'
 - 319+70.20 - P.T. 319+54.3 former alignment.
 Note - tree clearance - is 130' longer than old.

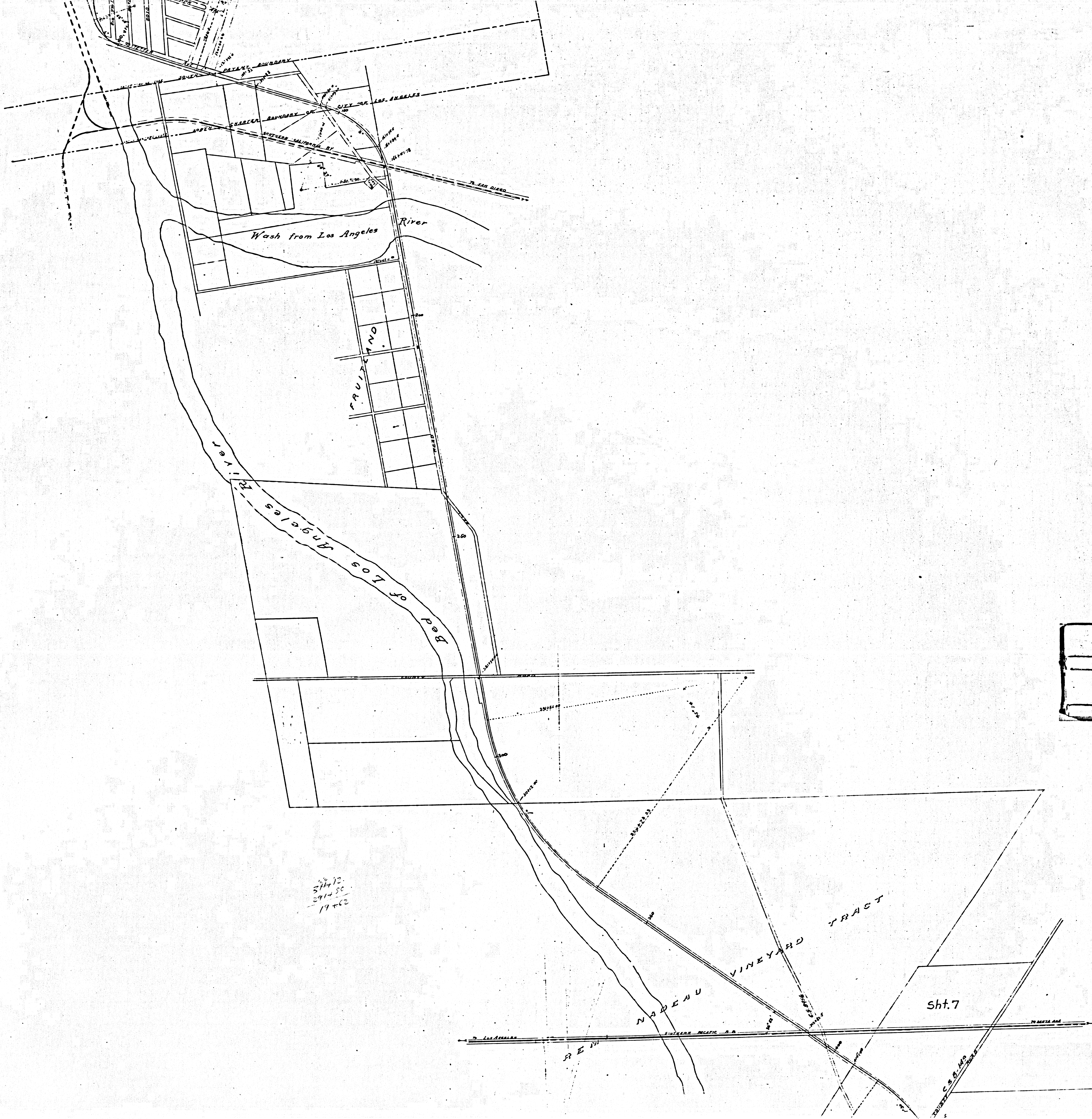
F.M.	1	6	5	0	4
A	2	OF	A	8	



Note - The 10° curve shown herein was
 subsequently changed to 89+32.20 + P.C. 2°30' L - 7'08"
 87+17.53 + P.T. +
 as shown on Profile, but has since been relocated
 and is now a reverse curve.

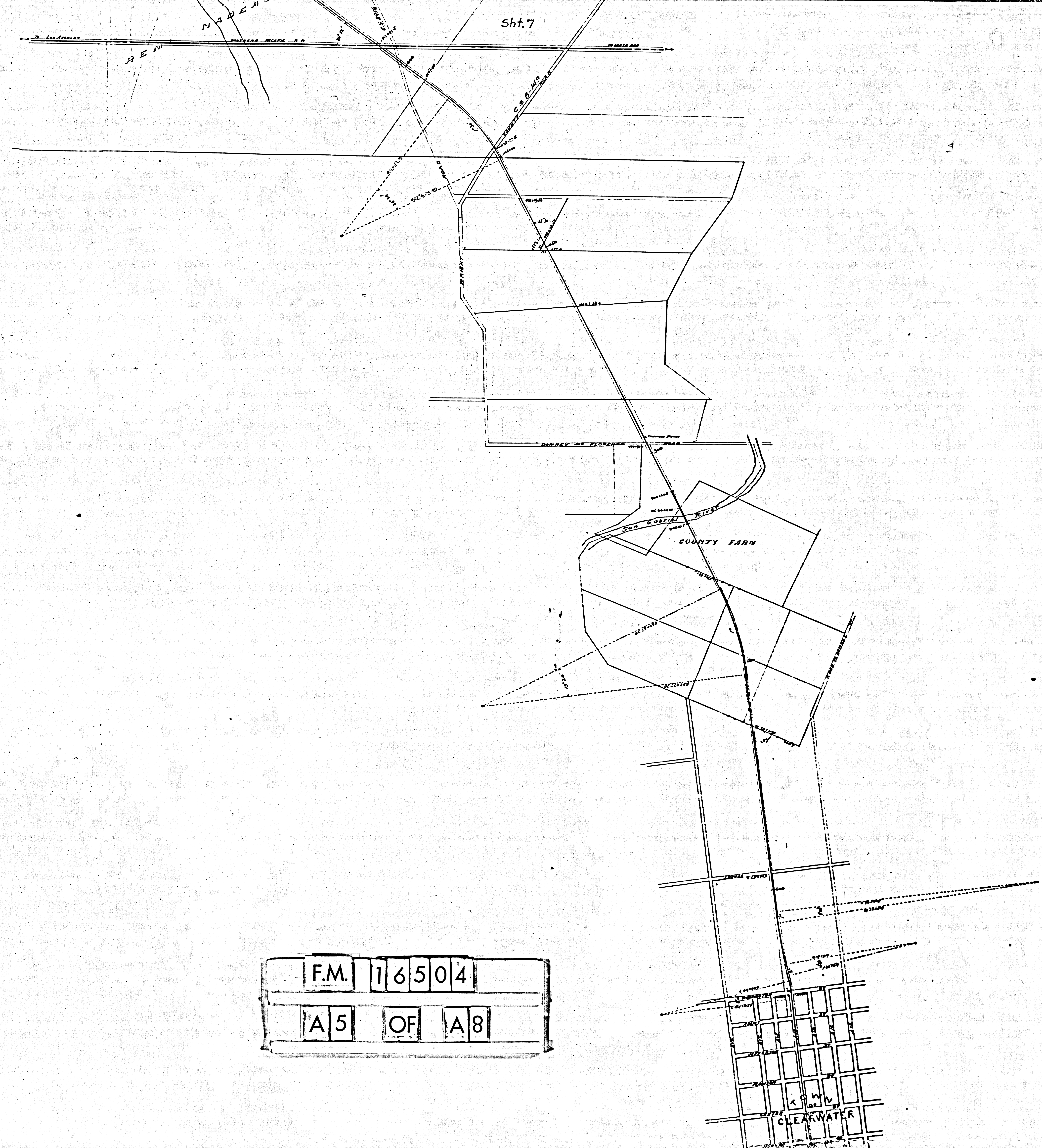
Sht. 7

F.M.	1	6	5	0	4
A3	OF	A8			



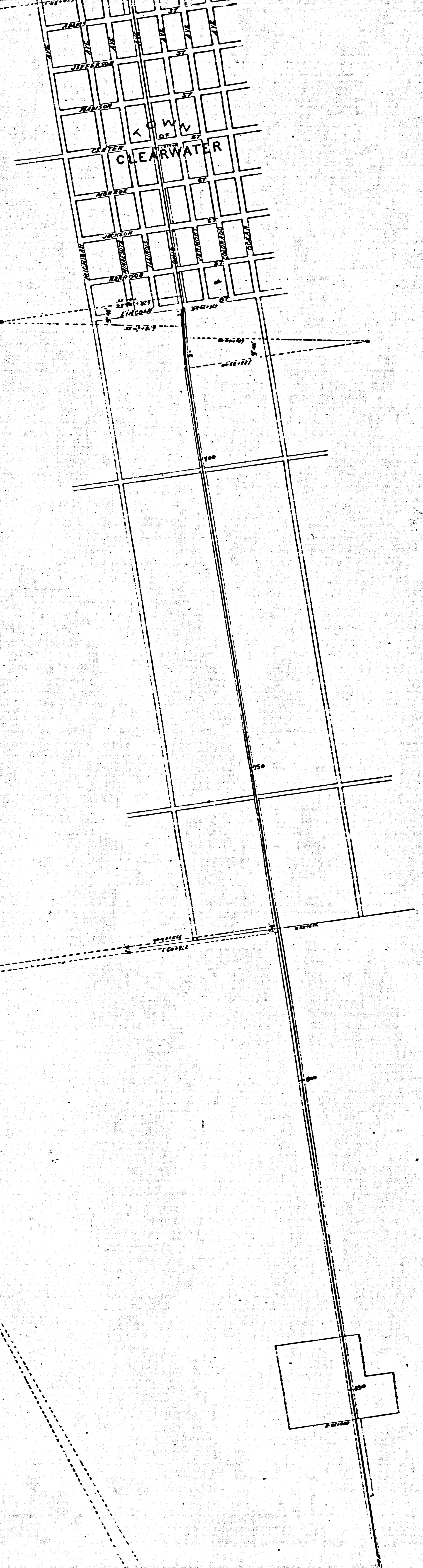
57412
2914 SC
17-62

F.M.	1	6	5	0	4
A	4	OF	A	8	



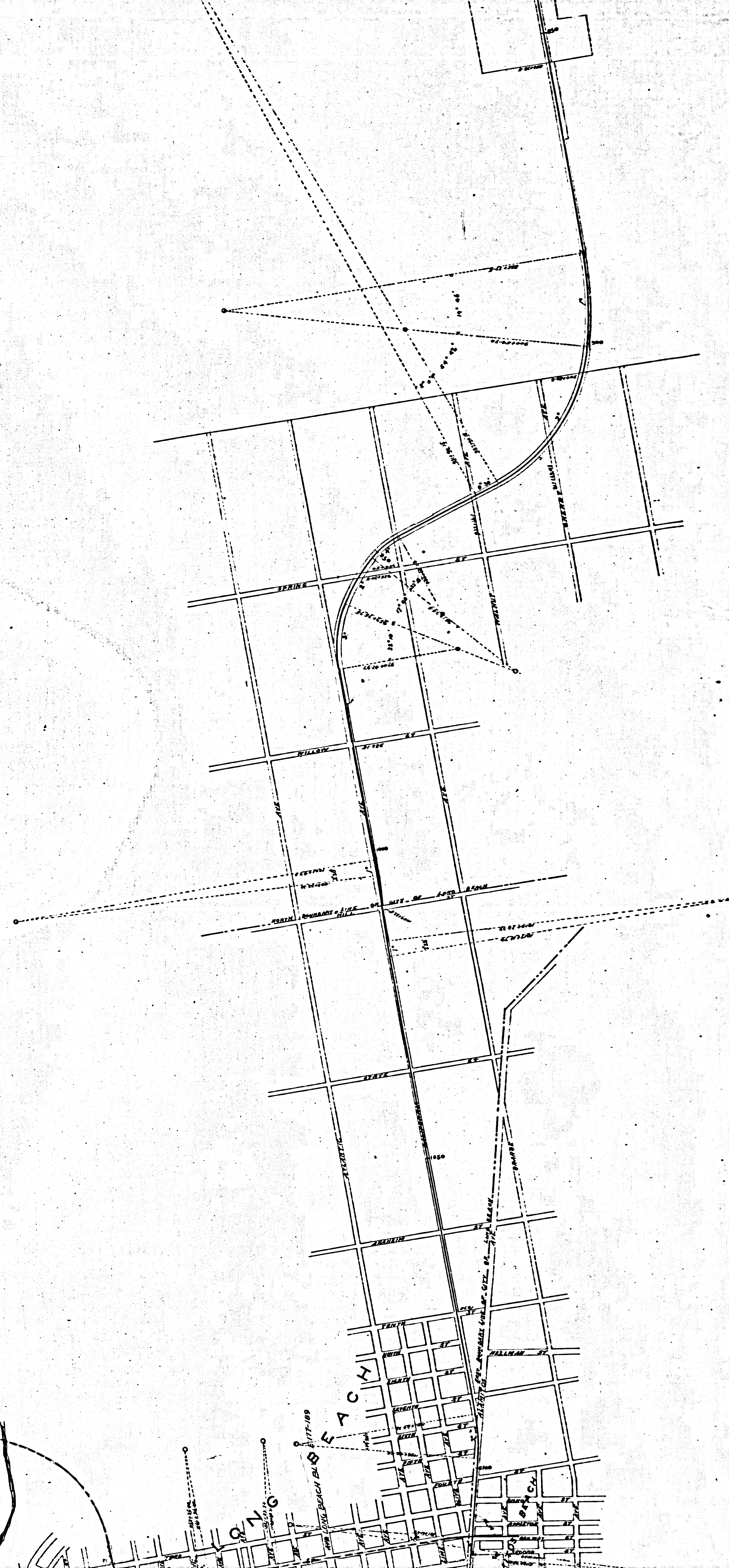
F.M. 16504
A5 OF A8

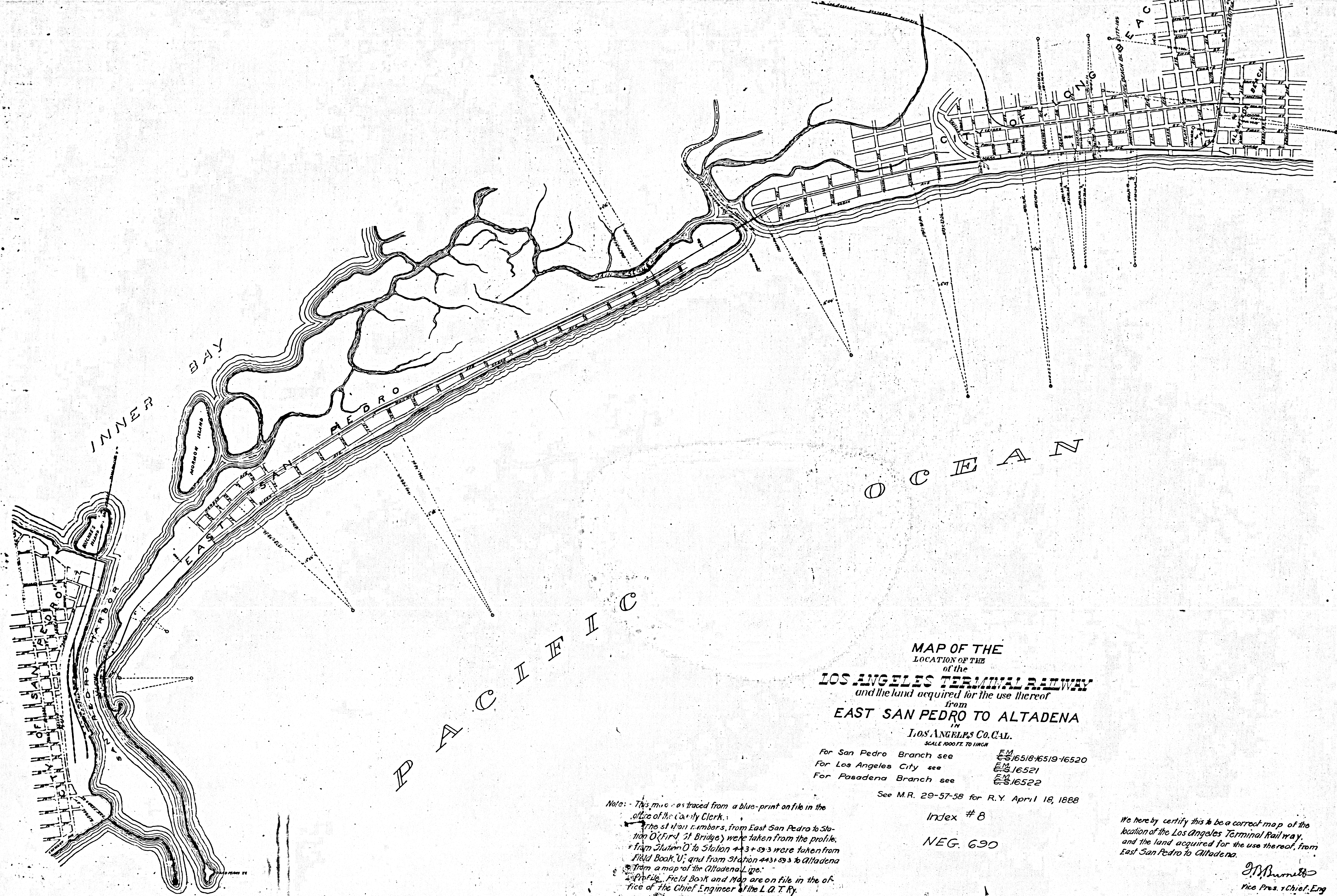
CLEARWATER



F.M.	1	6	5	0	4
A	6	OF	A	8	

F.M. 16504
A7 OF A8





MAP OF THE
 LOCATION OF THE
 of the
LOS ANGELES TERMINAL RAILWAY
 and the land acquired for the use thereof
 from
EAST SAN PEDRO TO ALTADENA
 IN
 LOS ANGELES Co. CAL.

SCALE 1000 FT. TO 1 INCH
 For San Pedro Branch see F.M. 16518-16519-16520
 For Los Angeles City see F.M. 16521
 For Pasadena Branch see F.M. 16522

See M.R. 29-57-58 for R.Y. April 18, 1888

Index # 8

NEG. 690

Note: - This map was traced from a blue-print on file in the office of the County Clerk.
 The station numbers, from East San Pedro to Station 0 (First St Bridge) were taken from the profile, and from Station 0 to Station 4+3+59.3 were taken from Field Book U; and from Station 4+3+59.3 to Altadena from a map of the Altadena Line.
 Profile, Field Book and Map are on file in the office of the Chief Engineer of the L. A. T. Ry.

We hereby certify this to be a correct map of the location of the Los Angeles Terminal Railway, and the land acquired for the use thereof, from East San Pedro to Altadena.

J. M. ...
 Vice Pres. & Chief Eng.
W. W. ...
 Secretary

F.M. 16504
 A8 OF A8

