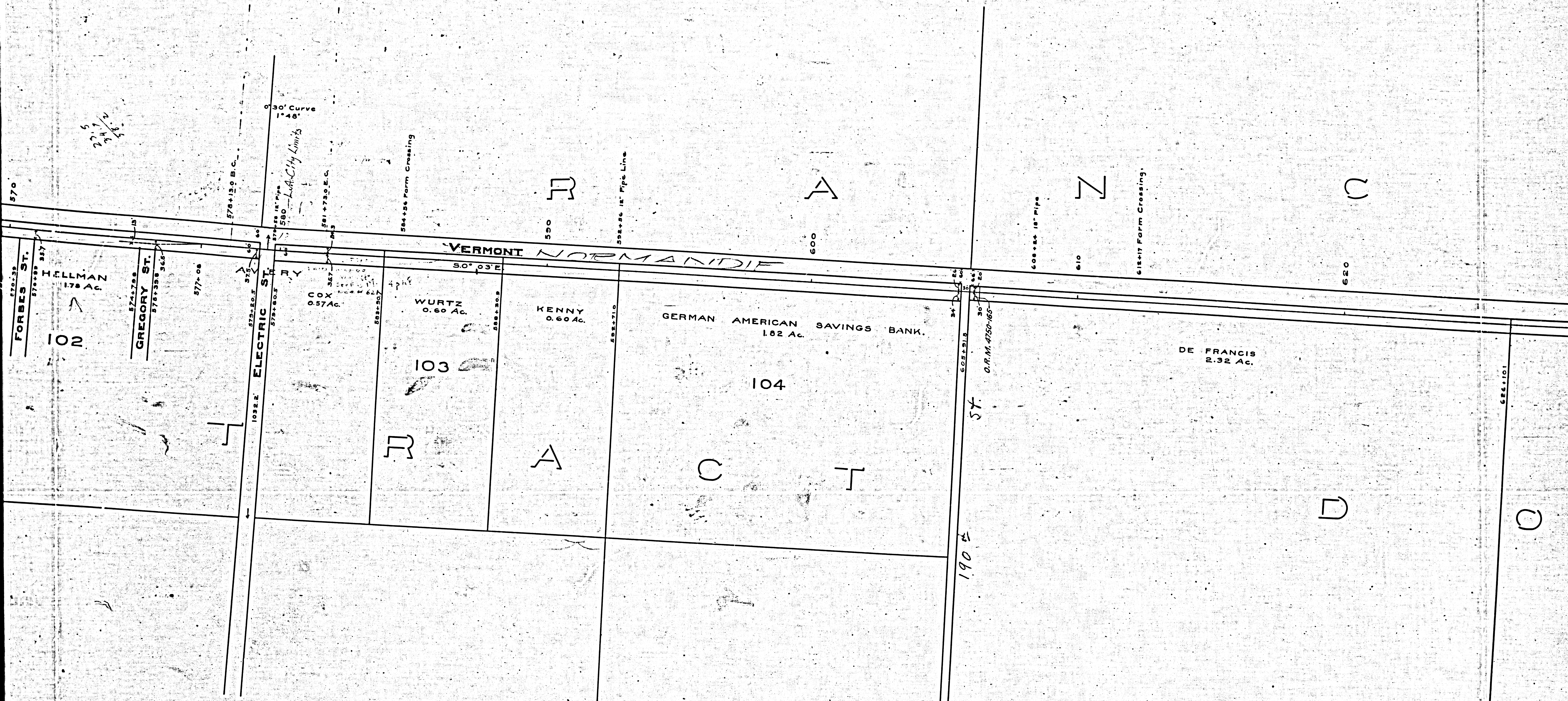


NOTE:
 Additions in red made by
 Co. July
 8-15-18

F.M.	1	6	5	1	4
A	1	OF	A	1	1



F.M. 16514

A2 OF A11

H I O S A N

630

640

646+35 Farm Crossing

650

652+55 24" Pipe

660

663+55 24" Pipe

669+55 Farm Crossing
670

678+55 Farm Crossing
680

682+35 18" Pipe
682+55

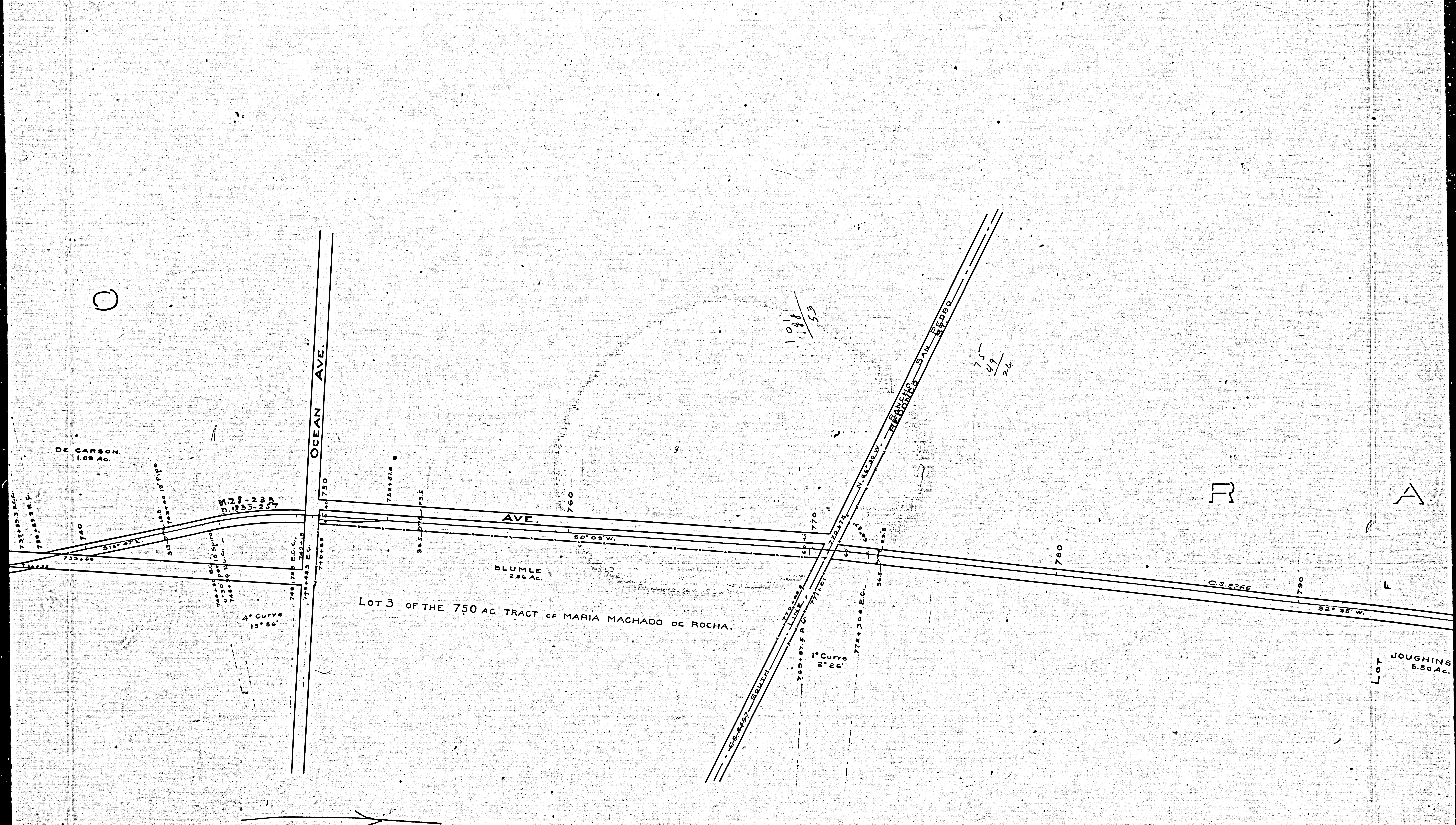
AVE.

G. M. DOMINGUEZ
2.32 Ac.

DE DEL AMO
2.65 Ac.

C M I N G U E N

F.M.	1	6	5	1	4
A	3	OF	A	11	



F.M.	1	6	5	1	4
A	5	OF	A	11	

A N O H O

JOUGHINS
5.50 Ac.

1° Curve
2° 26'

802+146 B.C.
810
810+76.8
811.5+19.2 C.C.
825

M-28-241

C.S. 8266

BROWN
2.18 Ac.

WEST 27 ACRES LOT "G"

WESTON ST. C.S. 8497

WESTON

Lot 3

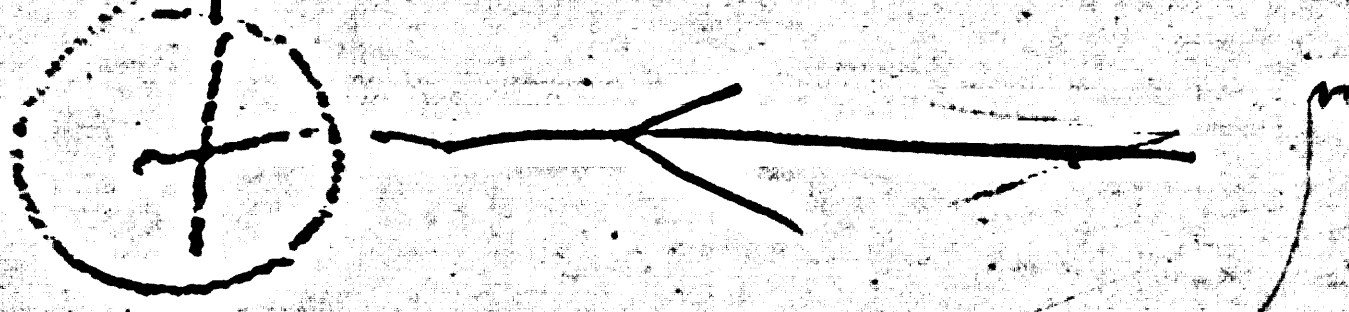
PECK'S SUBDIVISION OF LOT J AND A PORTION OF

840
Beech Farm Crossing

843+88-1.4" Pipe

849+88-1.4" Pipe
850

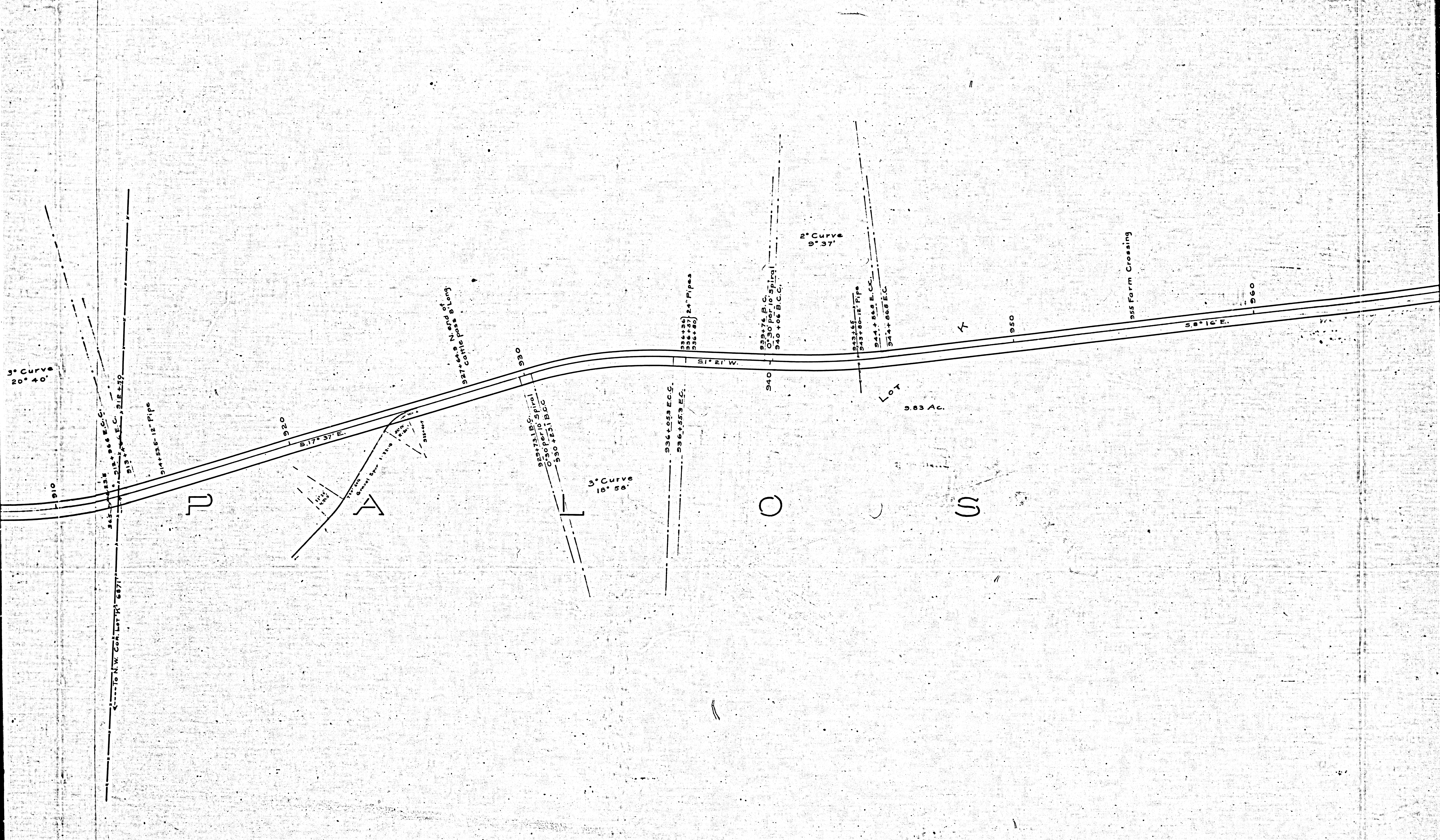
851+24.8
851+88



857+42.2
857+07
2435.2
2450.1

869+75.0
874+22.2
875+07
2475.5

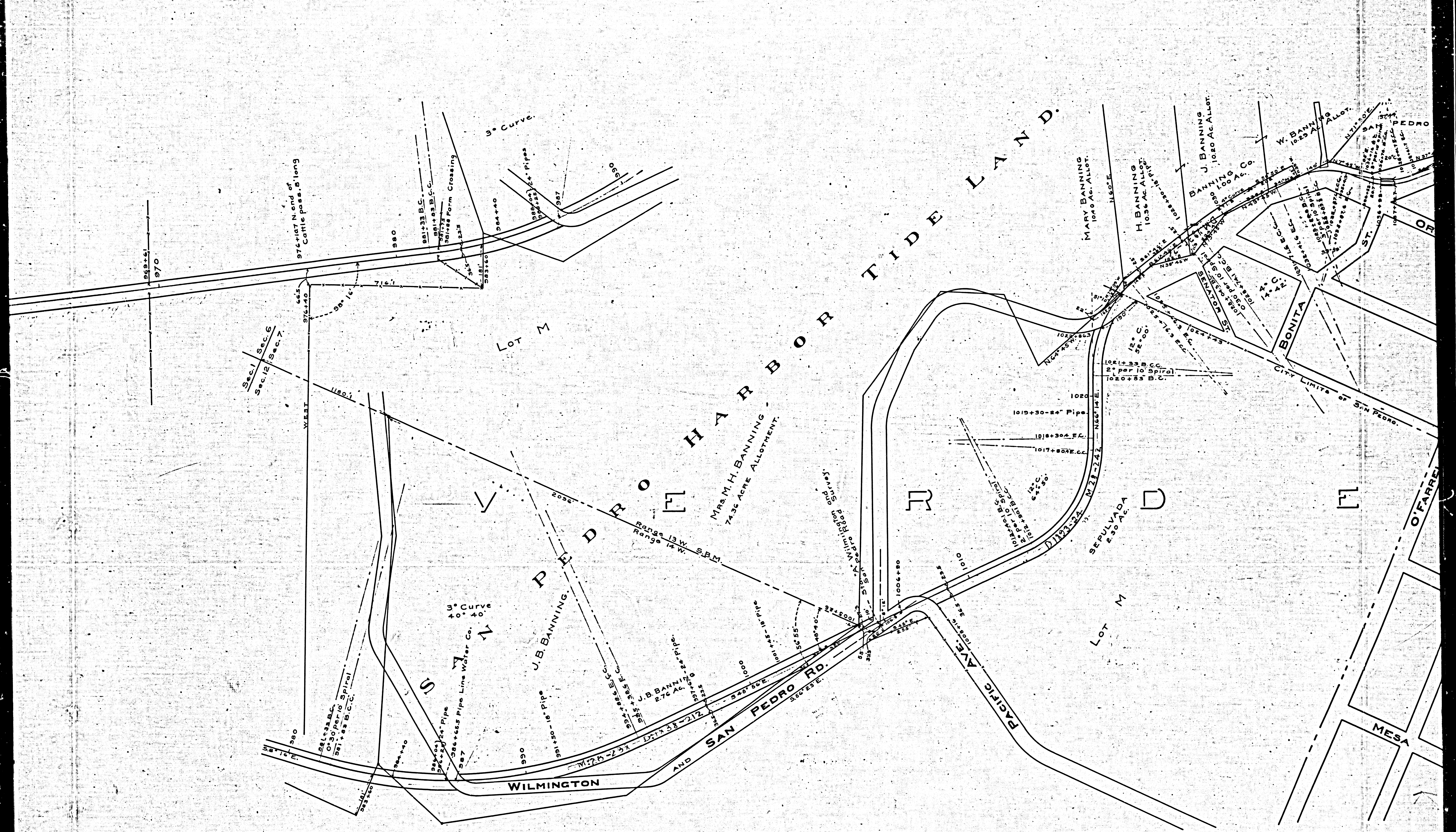
F.M.	1	6	5	1	4
A	6	OF	A	11	



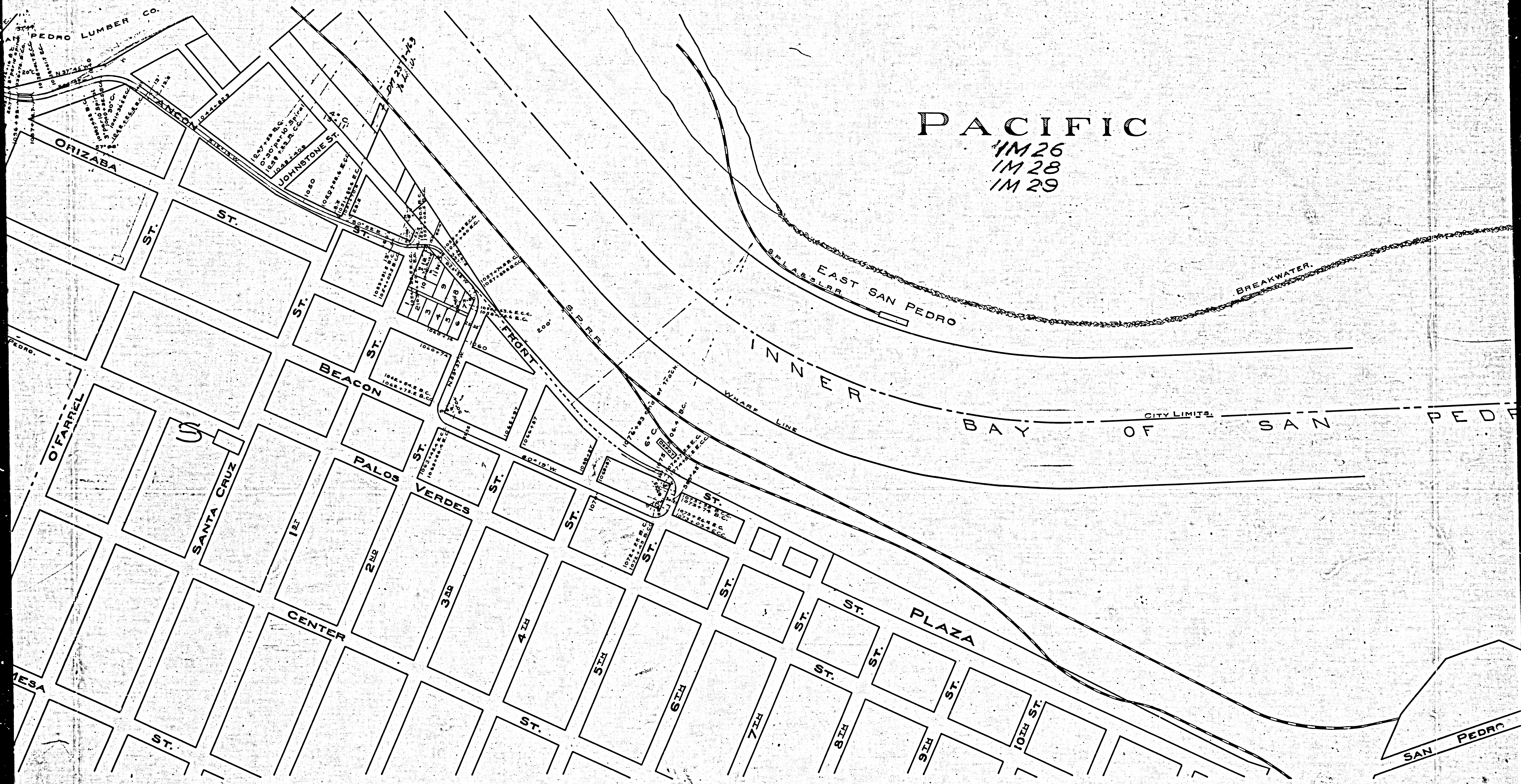
7

F.M.	1	6	5	1	4
A	8	OF	A	11	

8



F.M.	1	6	5	1	4
A	9	OF	A	11	



PACIFIC

IM 26
IM 28
IM 29

BREAKWATER

EAST SAN PEDRO
WHARF LINE

INNER BAY

CITY LIMITS

BAY OF SAN PEDRO

SAN PEDRO

F.M.	1	6	5	1	4
A	1	0	OF	A	1

