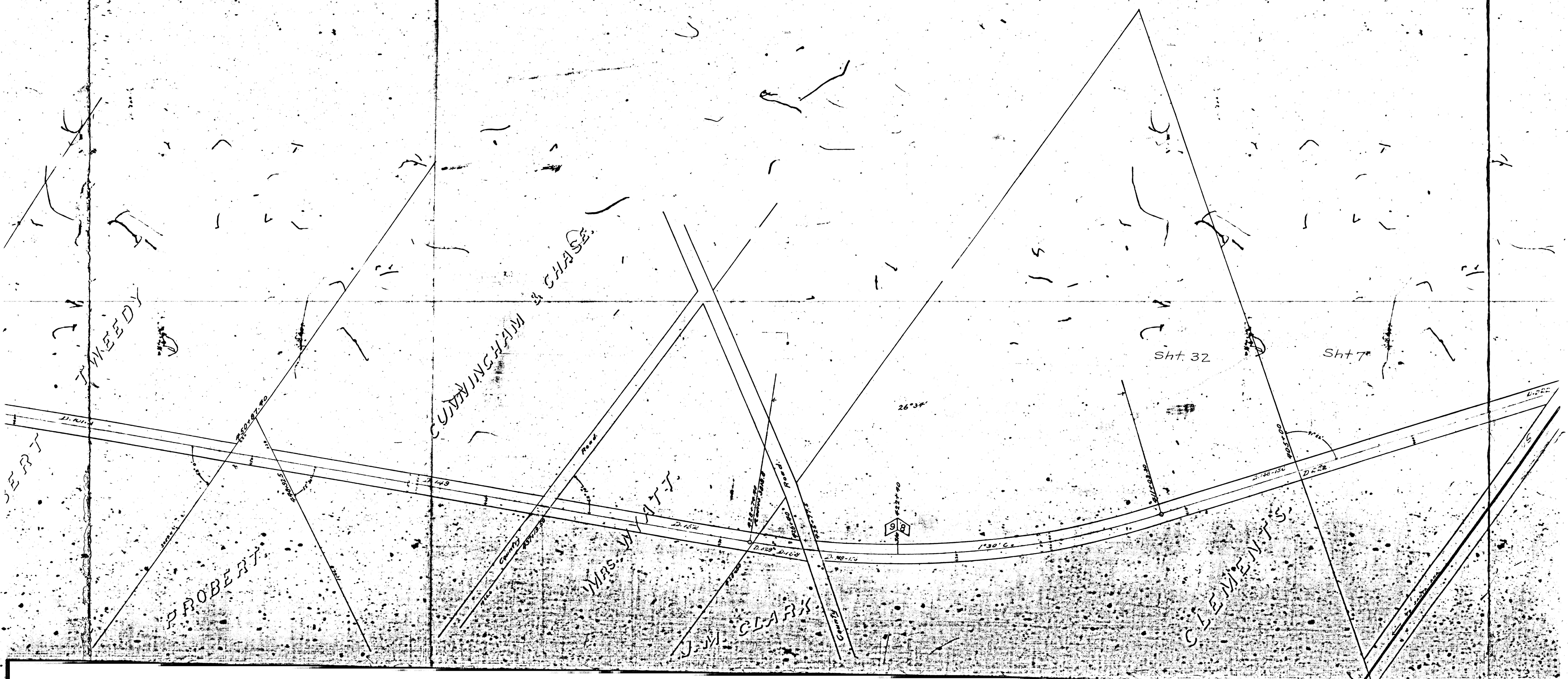
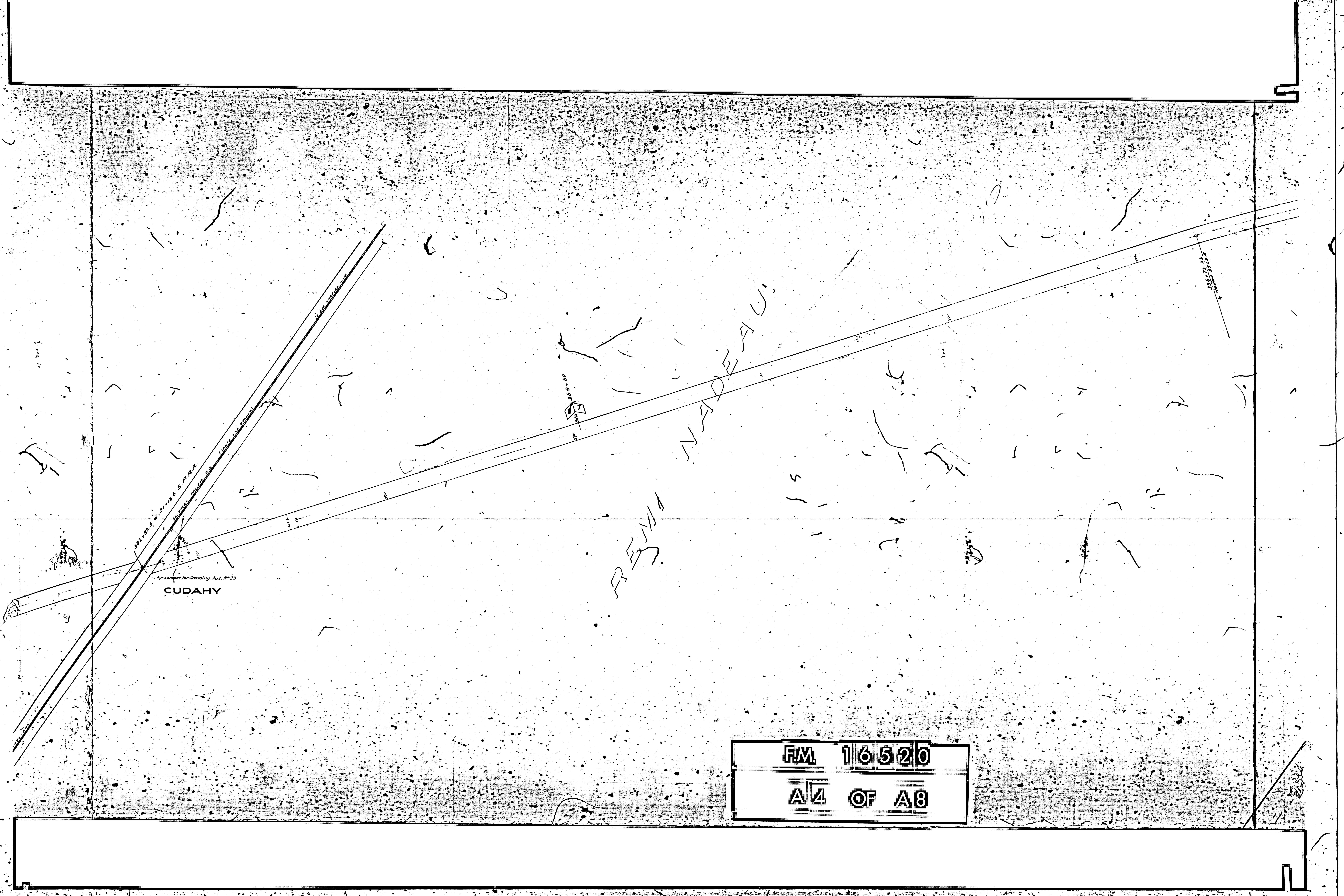


FM 16520

A 2 OF A 8

FM 16520
A3 OF A8





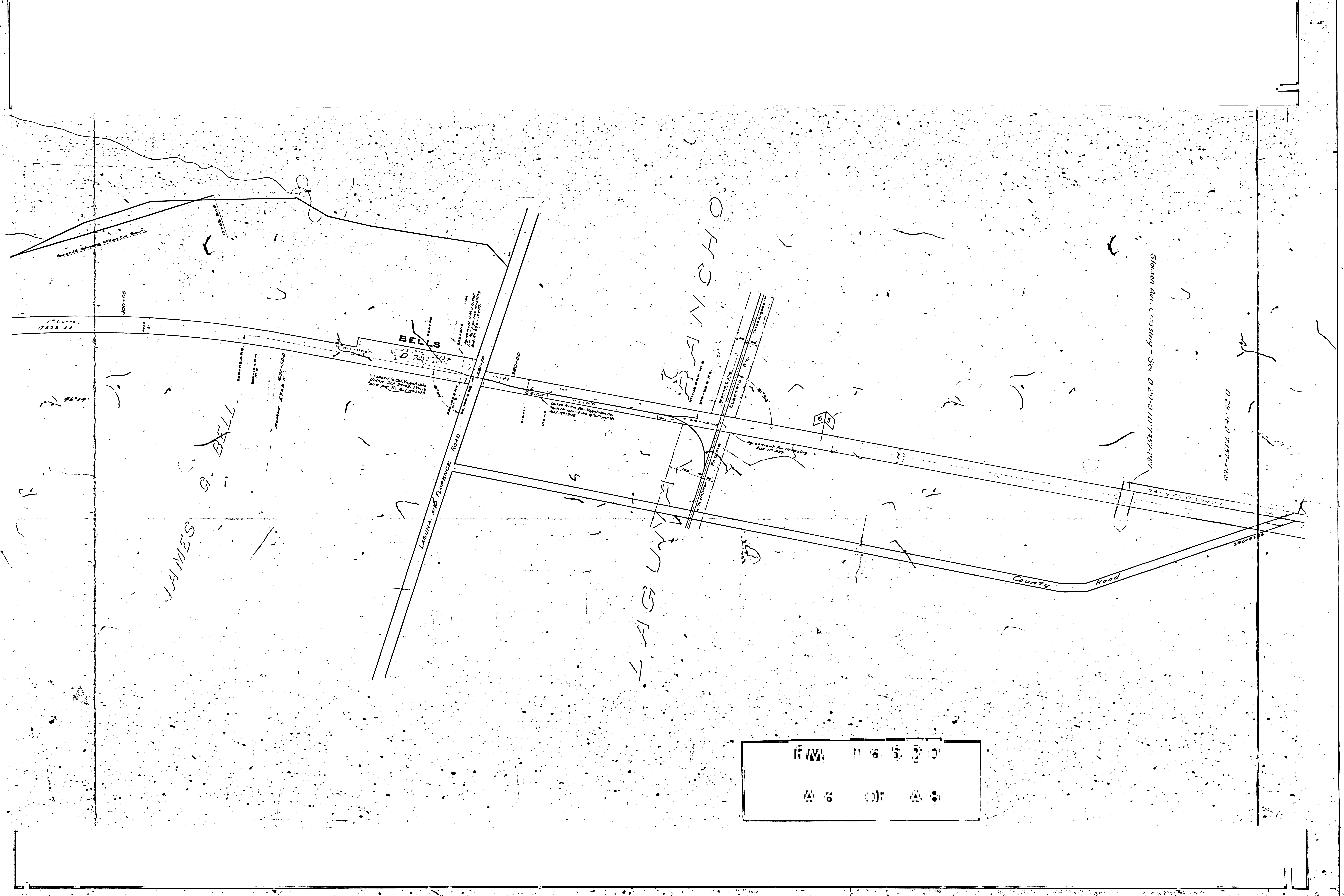
CUDAHY

FRONT VIEW

IN REAR VIEW

369.60

FM 16520
A4 OF A8



JAMES

G. BELL

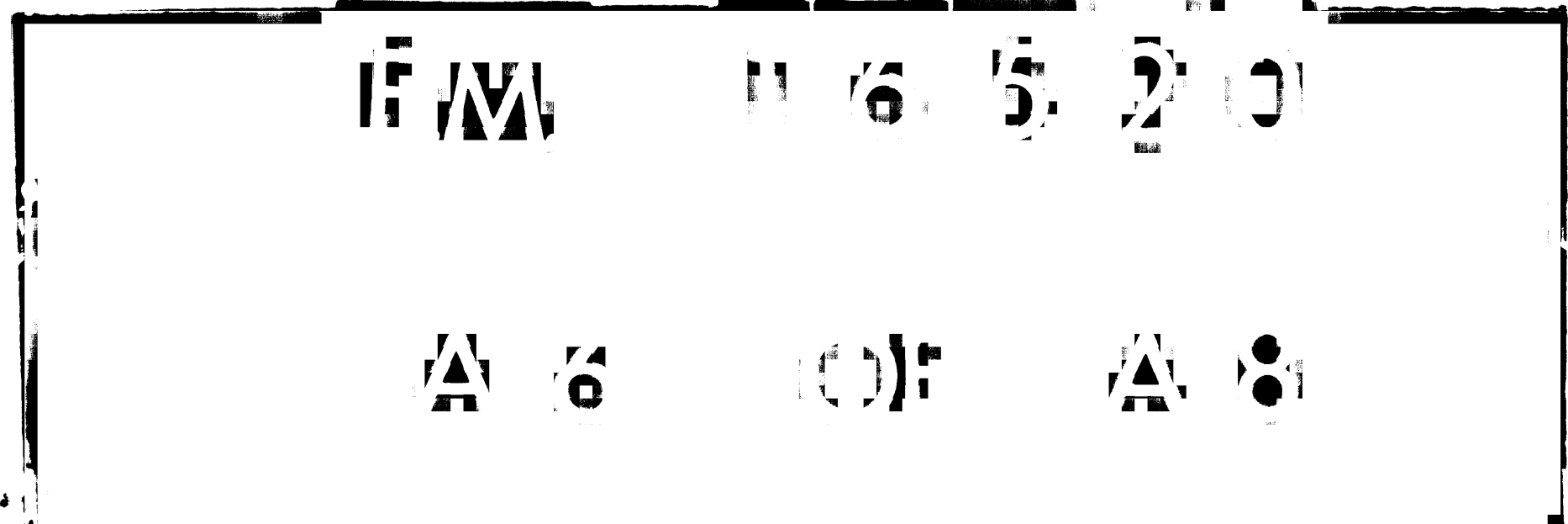
BELLS

LABUNA AND FLORENCE ROAD

CHONCHO
LAG UNIT

Stavson Ave. Crossing - Sec. 0.239-0.110.7357-267

County Road



Leased to Cal. Vegetable Union. Oct. 29-29, 1929. \$250 per Yr. And 1/3%

Leased to the Pac. Vegetable Co. April 1st 1929 - 1/3% per Yr. And 1/3%

Agreement for Grazing Aug. 1st 1929

1st Curve 7523 JJ

0.239-0.110.7357-269

290753



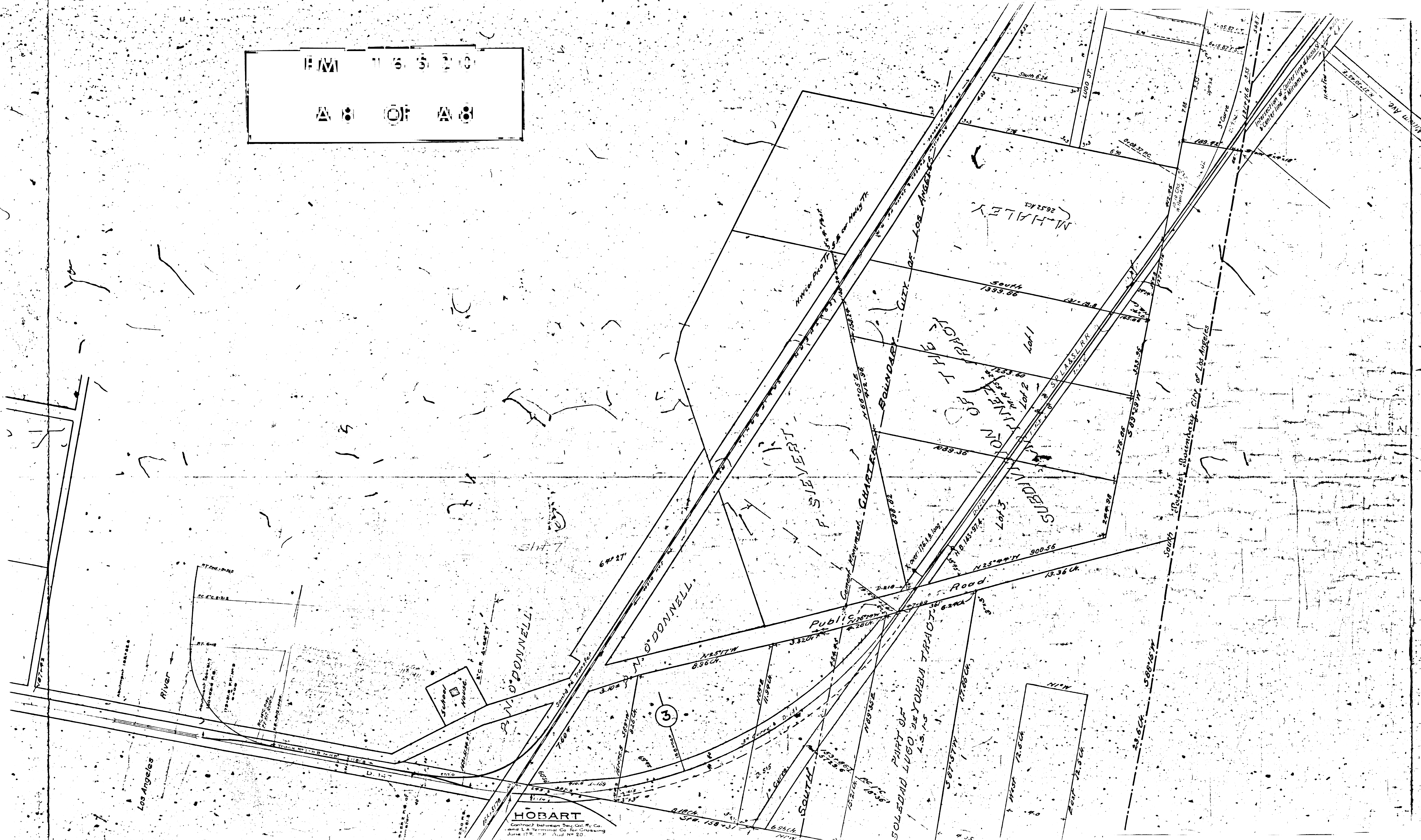
D 29-810-7337-189

D 29-810-7318-189

18 JAN 1952

Los Angeles

FM 11 5 5 2 0
A 8 OF A 8



HOBART
Contract between Dan Gill, P. Co.
and L.A. Terminal Co. for Crossing
June 17, 1911. Ord. No. 20

SOLEDAD LUGO DE YORUBA TRACT
L.S. 15

Los Angeles

River

M. O'DONNELL

F. SILVERT

M. HALEY

M. VANDERBILT

City of Los Angeles

SOUTH

Road

Public Highway

Sheet 7

M. O'DONNELL

3

11' W
1' West 12.8 CH
20' East 12.8 CH

23.6 CH
588' 10" W

13.36 CH

500.56

1039.36

Lot 1

Lot 2

Lot 3

9253.06

South

2652.06

1039.36

1039.36

1039.36

1039.36

1039.36

1039.36

1039.36

1039.36

1039.36

1039.36

1039.36