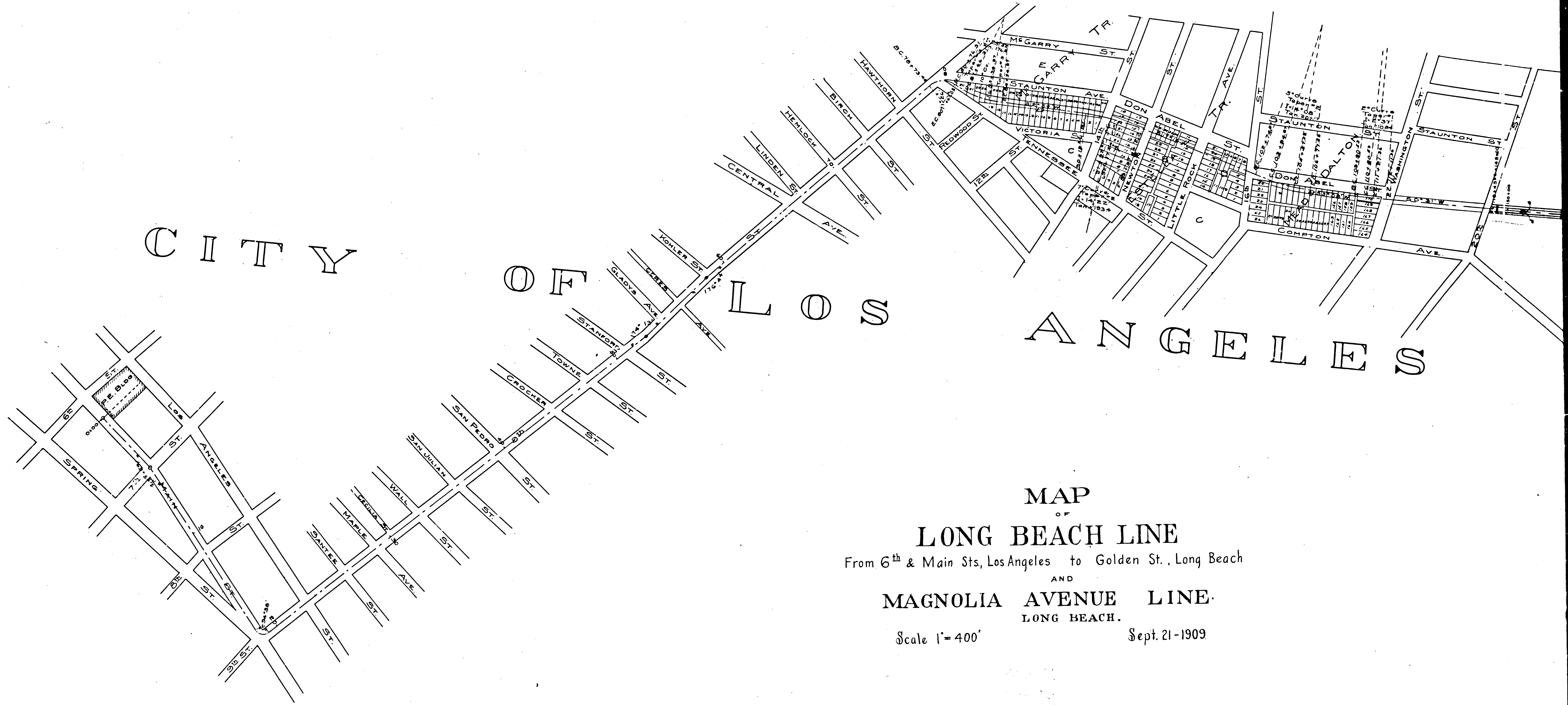


CITY

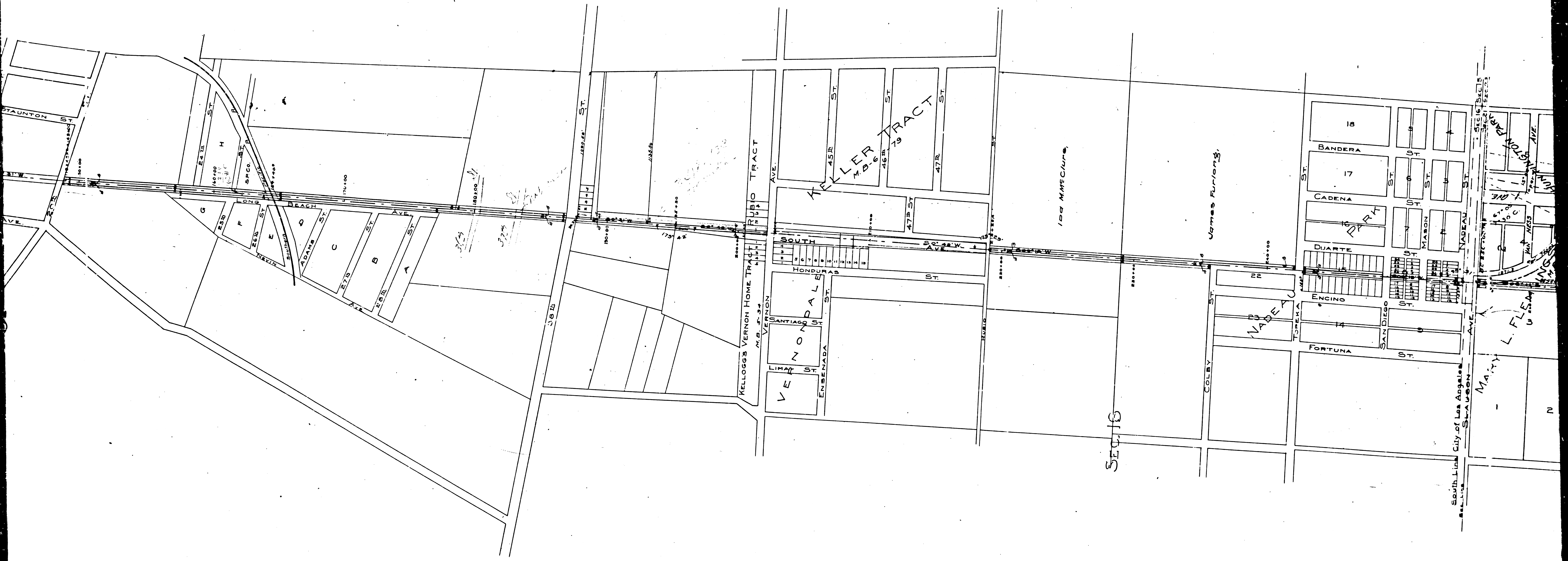
OF LOS

ANGELES

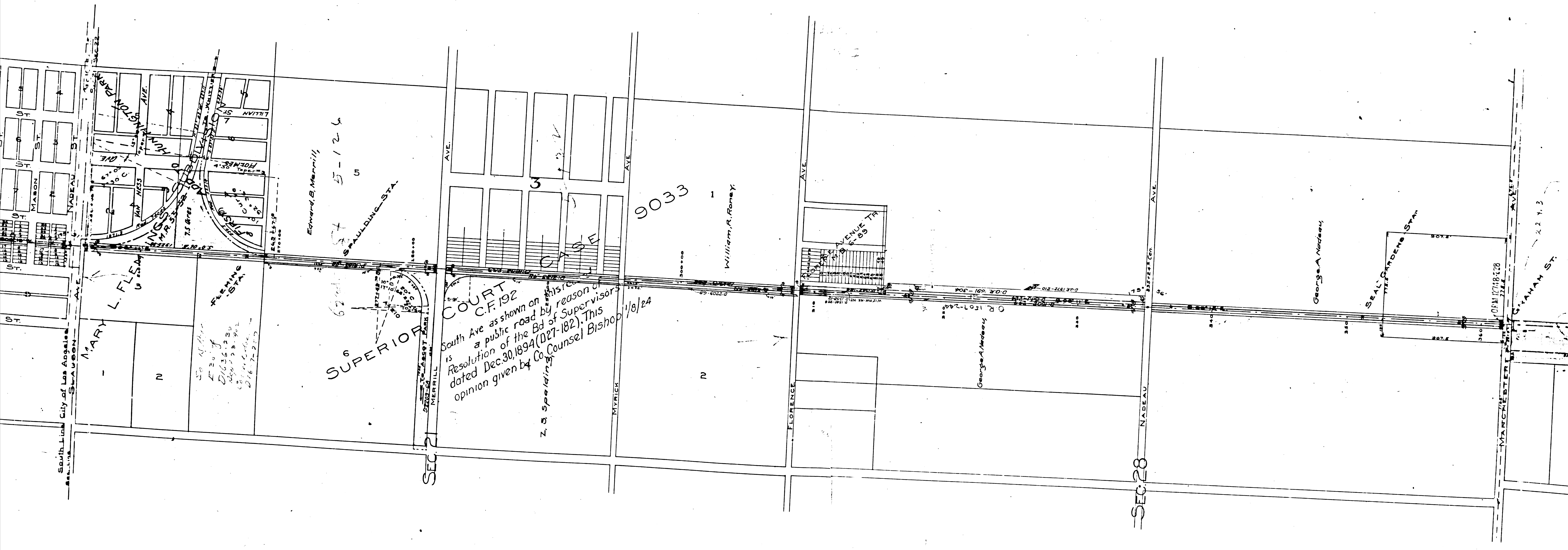


MAP  
 OF  
**LONG BEACH LINE**  
 From 6<sup>th</sup> & Main Sts, Los Angeles to Golden St., Long Beach  
 AND  
**MAGNOLIA AVENUE LINE.**  
 LONG BEACH.  
 Scale 1"=400' Sept. 21-1909

F.M.	1	6	5	2	3
A	1	OF	A	11	



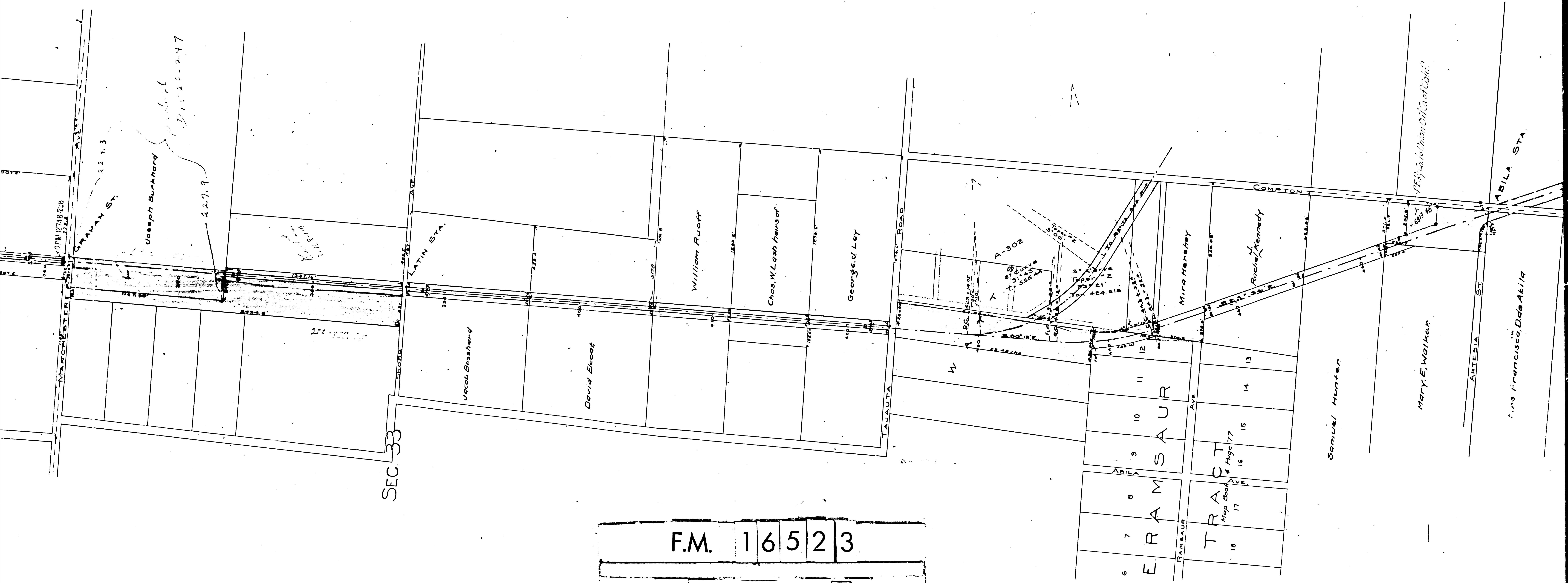
F.M.	1	6	5	2	3
A	2	OF	A	11	



COURT  
 C.F. 192  
 South Ave as shown on this  
 is a public road by reason of  
 Resolution of the Bd of Supervisor  
 dated Dec. 30, 1894 (D27-182). This  
 opinion given by Co. Counsel Bishop 1/8/24

F.M.	1	6	5	2	3
A	3	OF	A	11	

F.M. 16523  
 A4 OF A11

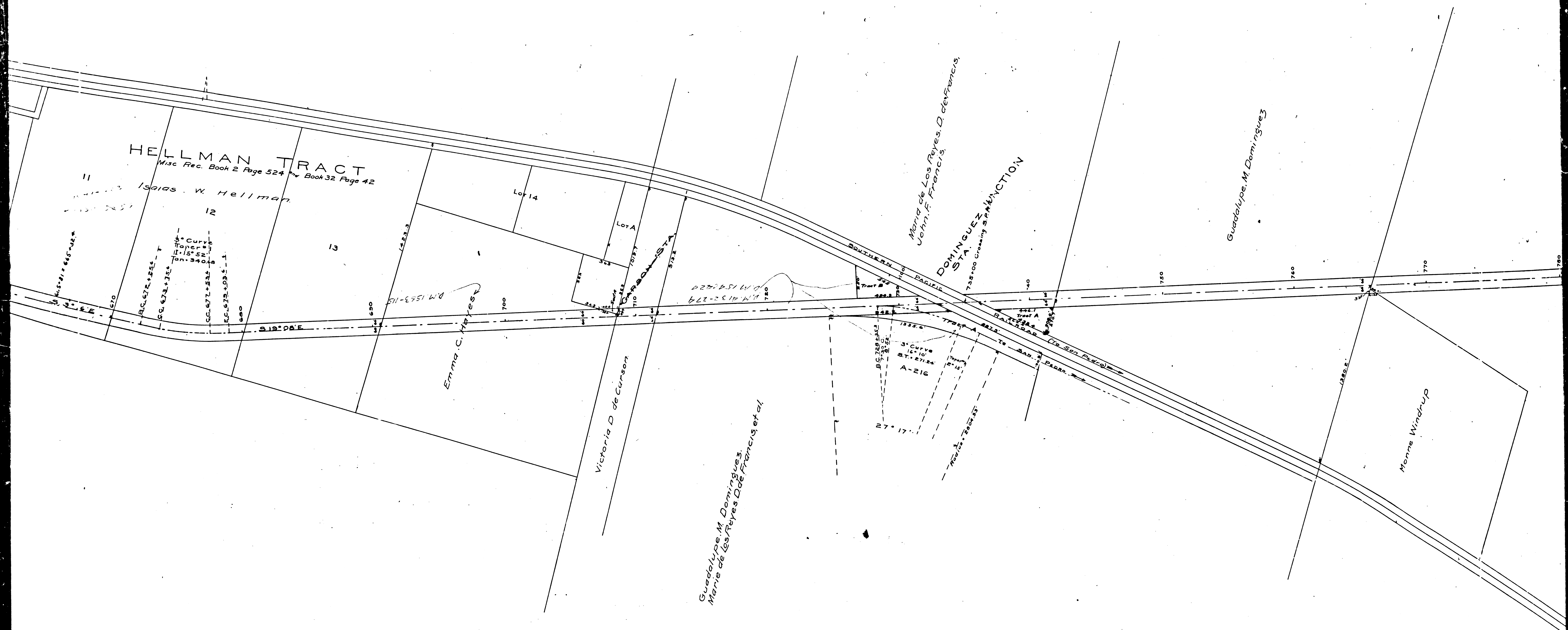




F.M.	1	6	5	2	3
A	5	OF	A	11	



F.M.	1	6	5	2	3
A	6	OF	A	11	



**HELLMAN TRACT**  
 Misc Rec. Book 2 Page 524 & Book 32 Page 42

Isaias W. Hellman

Maria de Los Reyes, D. de Francis,  
 John F. Francis

**DOMINGUEZ STATION**  
 735'00' Curving S. P.M. ACTION

Guadalupe M. Dominguez

Emma C. Reyes

Victoria D. de Carson

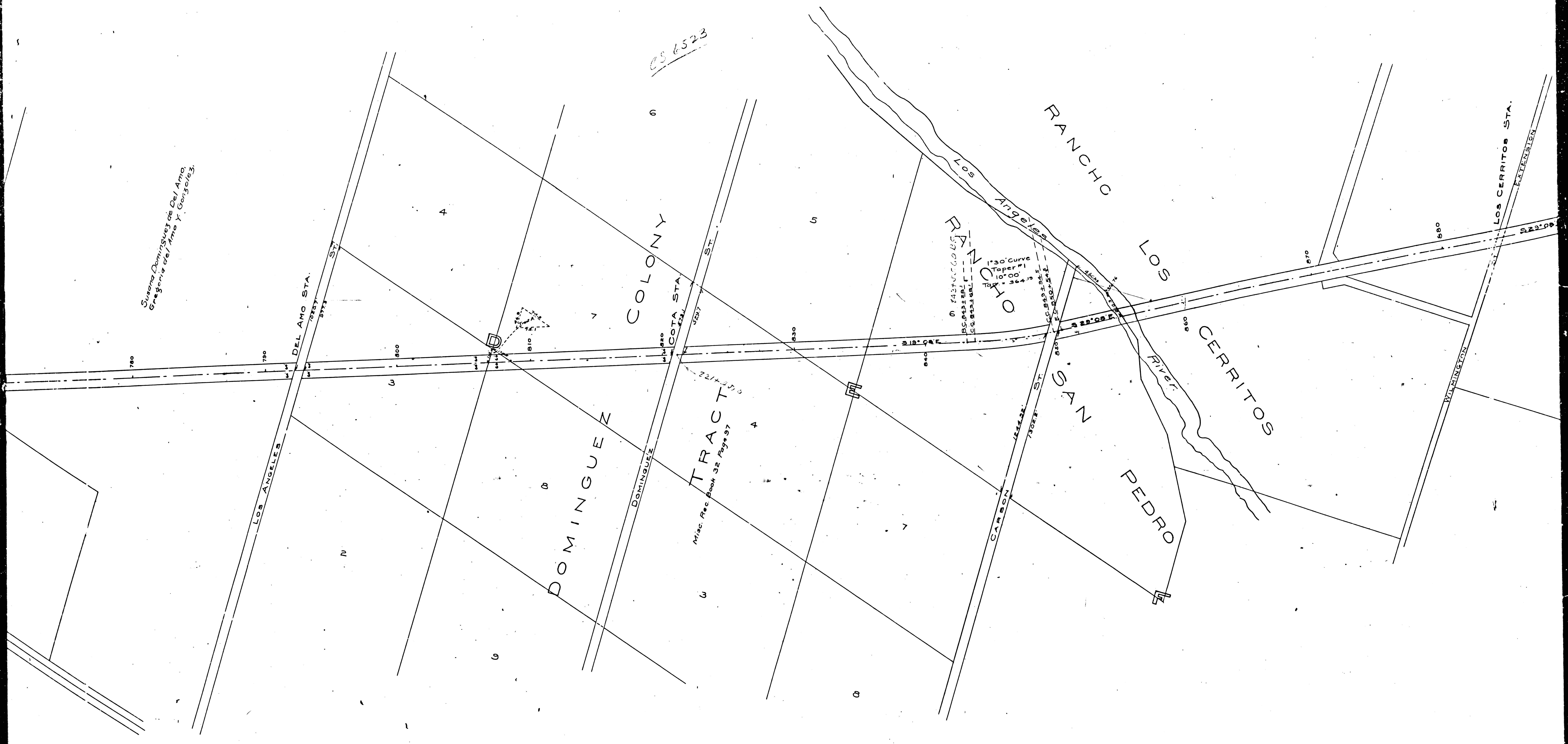
Guadalupe M. Dominguez,  
 Maria de los Reyes D. de Francis et al.

Monne Winchup

F.M.	1	6	5	2	3
A	7	OF	A	11	

Susana Dominguez de Del Amo,  
Esposa de Del Amo Y. Gonzalez.

CS 6523



F.M.	1	6	5	2	3
A	8	OF	A	11	





F.M.	1	6	5	2	3
A	9	OF	A	11	



F.M. 16523  
 A10 OF A11



129  
128

F.M. 16523  
A11 OF A11

PACIFIC OCEAN