

Sht. 7
" 24

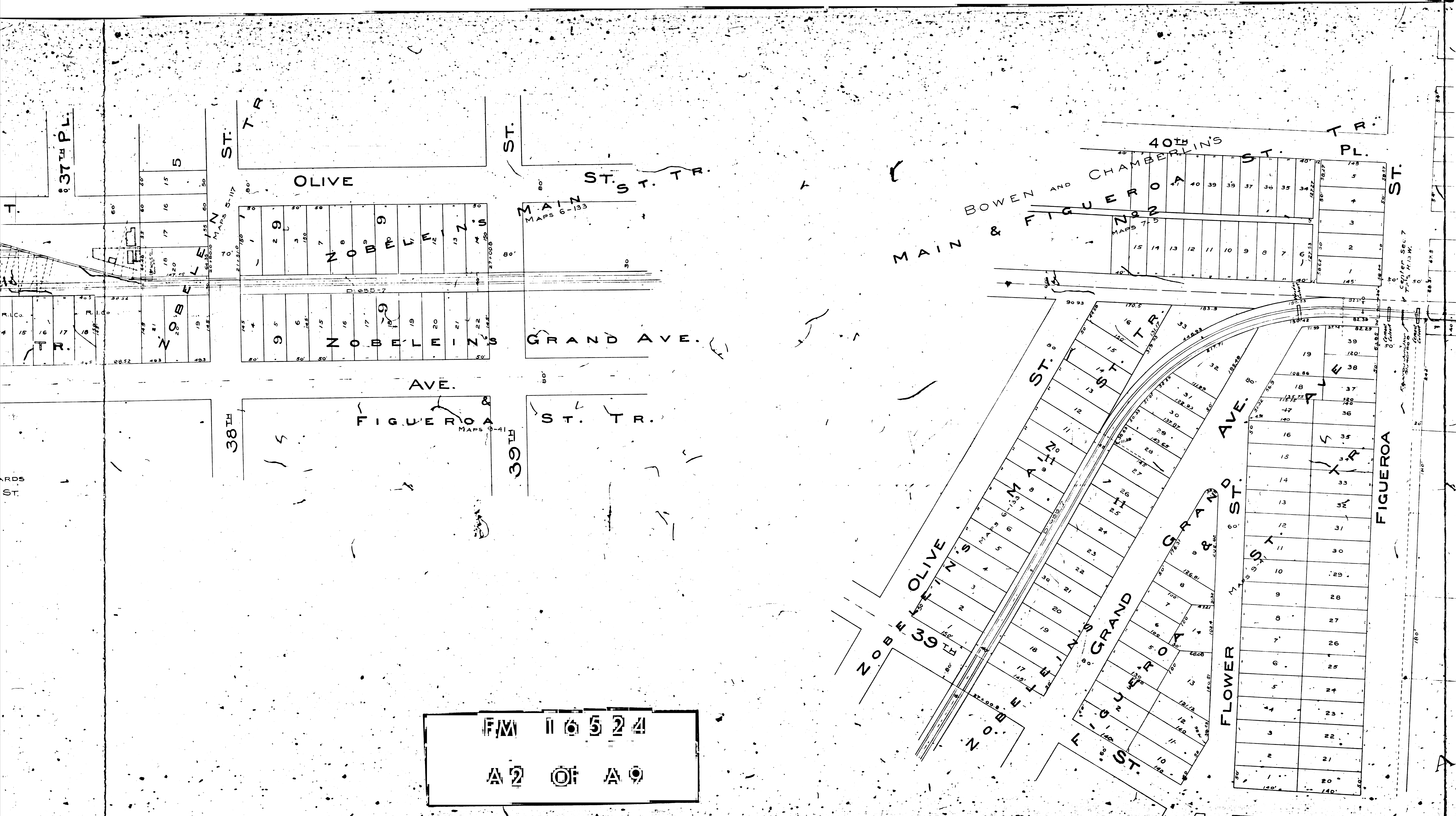
LOS ANGELES & REDONDO RAILWAY CO.
INGLEWOOD DIVISION

PART I
GRAND & JEFFERSON ST. TO STATION 230+00
NORTH OF HYDE PARK

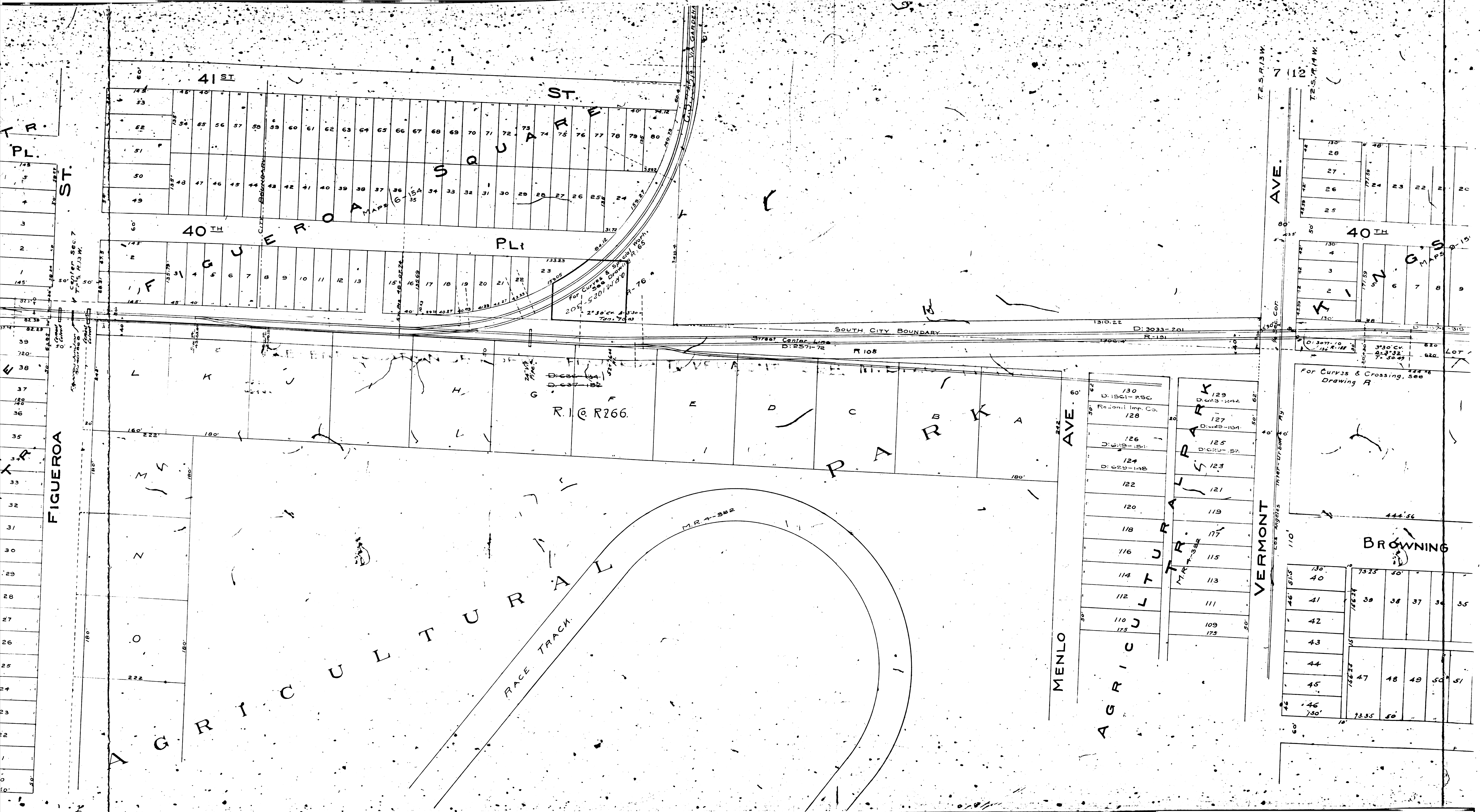
SCALE 1"=100' F.B.R-15 DEC. 29-1906

NOTE - SEE R-65 FOR YARDS
JEFFERSON ST. TO 40TH ST.

F.M. 16524
 A II OF A 9

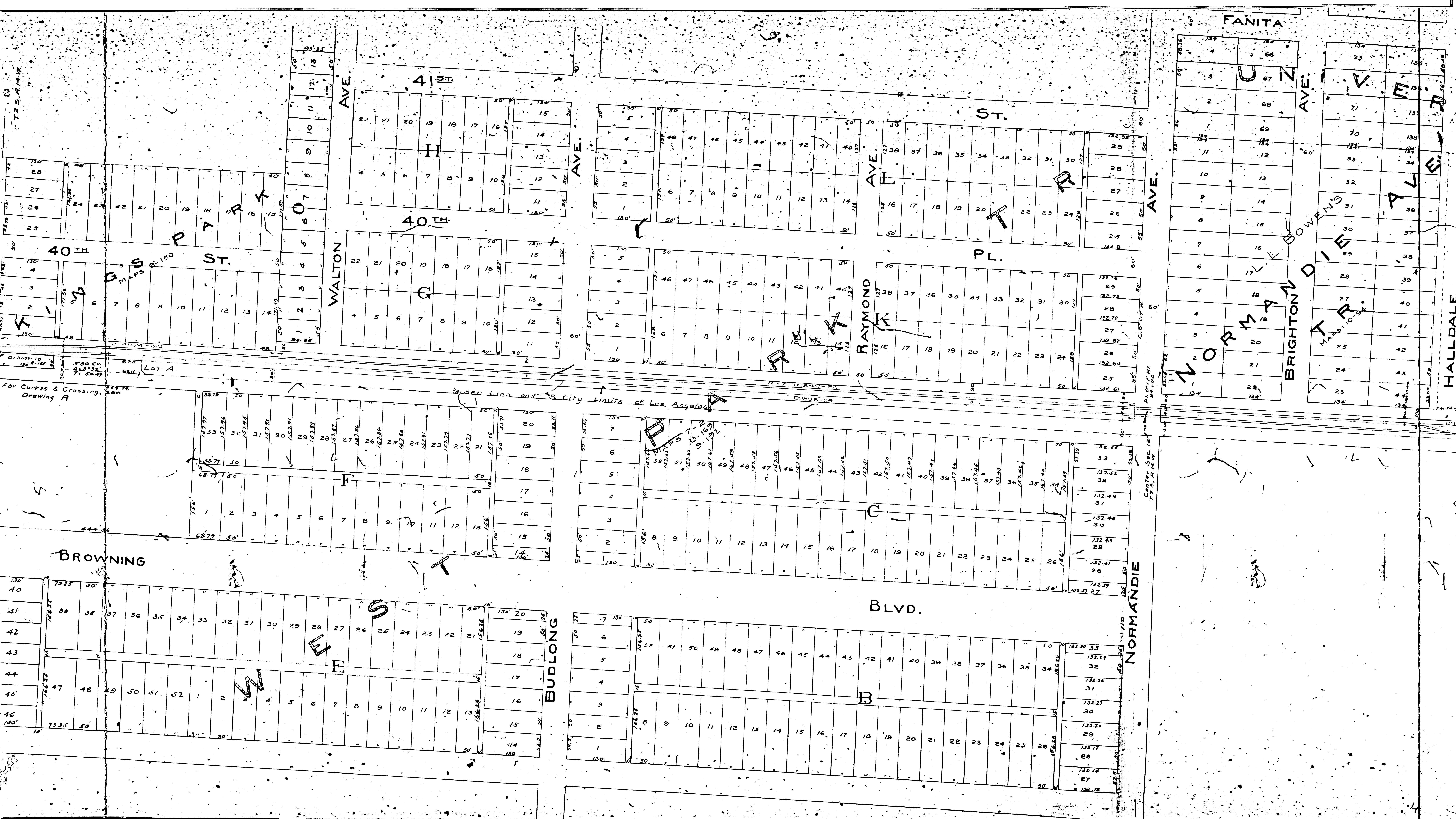


F/M 116524
 A2 OF A9



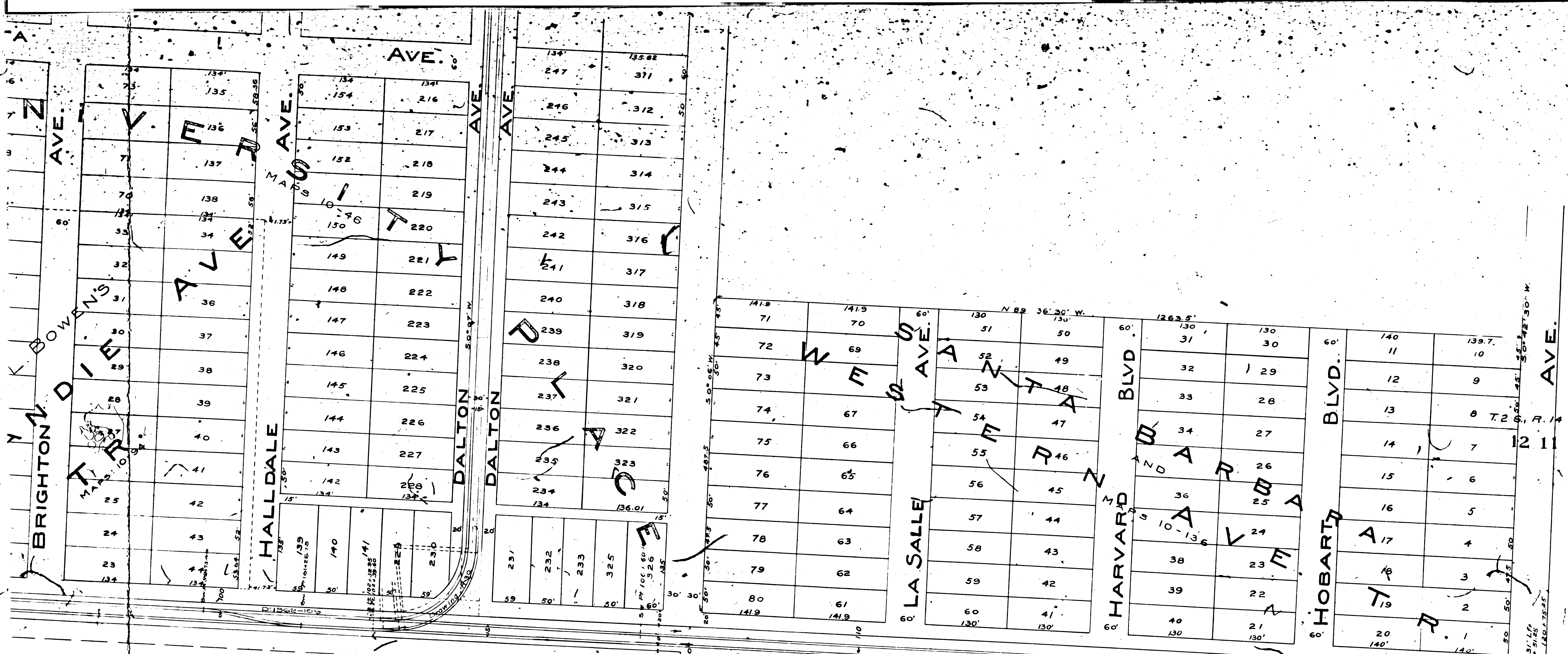
FM 116524

A 3 OF A 9



FM 116524

A 4 OF A 9



F/M 16524

A 5 OF A 9

F/M 11 6 5 2 4
 A 6 OF A 9

SEWER RIGHT		ARLINGTON ST.		SANTA BARBARA AVE		SECOND ST.		THIRD ST.	
140.02'	52	150.02'	63	150.02'	156	153.58'	157	130.08'	273
160'	51	150'	54	153.32'	156	153.32'	158	130'	274
50'	50	55'	55	153.76'	155	153.76'	159	130'	275
	49	56'	56	152.47'	153	152.47'	160	130'	276
	48	57'	57	152.33'	152	152.33'	161	130'	277
	47	58'	58	152.18'	151	152.18'	162	130'	278
	46	59'	59	152.04'	150	152.04'	163	130'	279
	45	60'	60	151.89'	149	151.89'	164	130'	280
	44	61'	61	151.75'	148	151.75'	165	130'	281
				151.60'		151.60'		130'	282
				151.46'		151.46'		130'	283

50' WAY
 0' Minimize

0' Minimize
 156.725' 2087 Line No. Cienega Asso de 7/1/90

R O C I E N E G A

11 10

1/4 Sec Line

5° 32' CV
Δ = 43° 45' 30"

D: 1500.20

12 174.7770

12 174.7770

F.M. 1 6 5 2 4
A 7 O A 9

60	130 05
ST.	273
	130
	274
	275
	276
	277
	278
	279
	280
	281
	282
	283

THIRD

156 1.75

160

170

1/4 Sec. Corn

180

190

1015

P A S S O D E F A

91+00
92+50
95+00 (approx) 91+500

5'38" Cy
45'00"

4" Copper 197-156

200

210

D:1540-26

217+262

5" Box Culvert

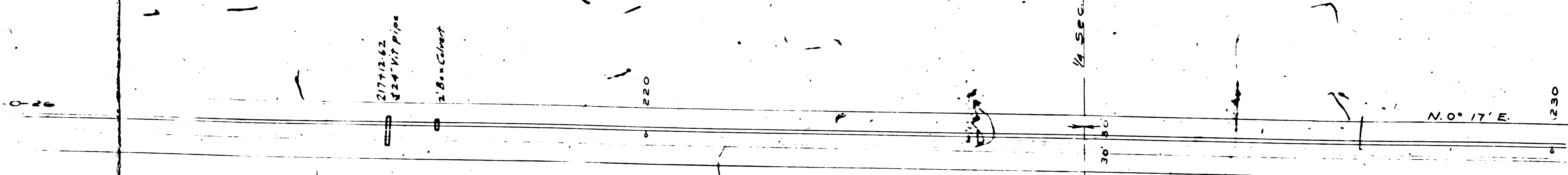
F/M 11 6 5 2 4
A 8 OF A 9

L A T T I J E R A

LOS ANGELES & REDONDO RAILWAY CO.
INGLEWOOD DIVISION

PART I
GRAND & JEFFERSON ST. TO STATION 230+00
NORTH OF HYDE PARK

SCALE: 1"=100' F.B.R-15 DEC. 28-1906



R-57 FOR CONTINUATION

FM 16524
A 9 OF A 9