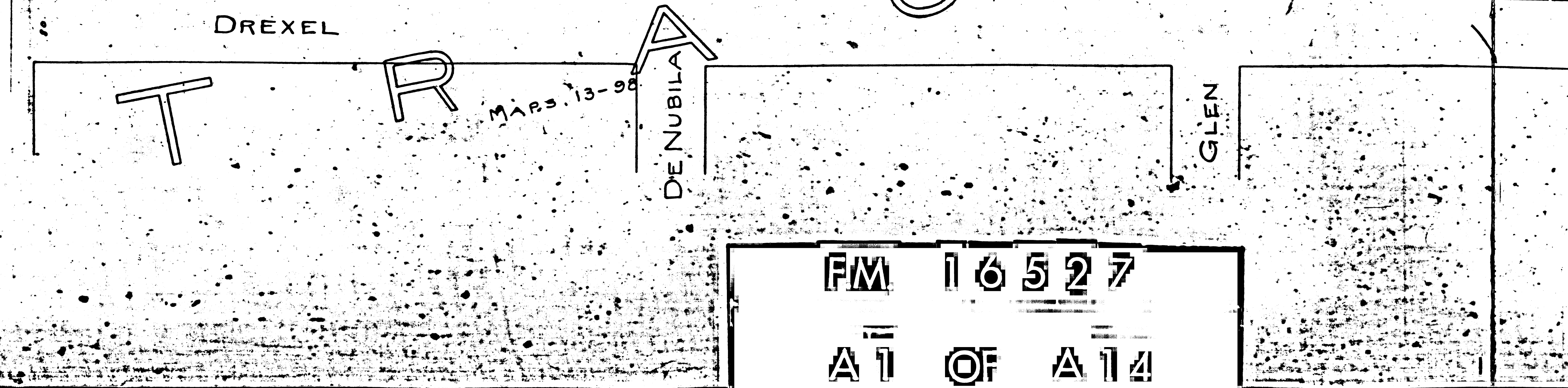
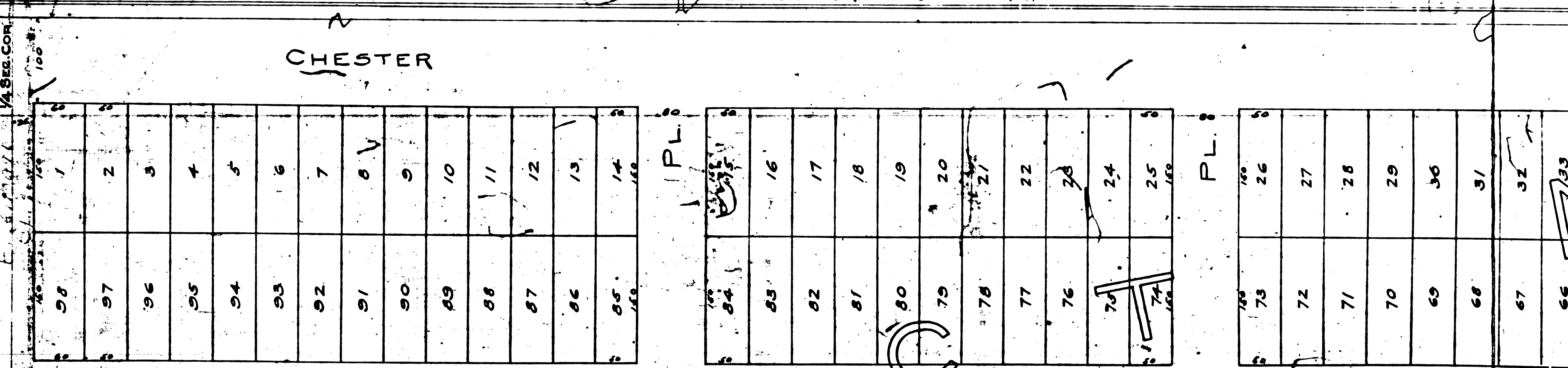
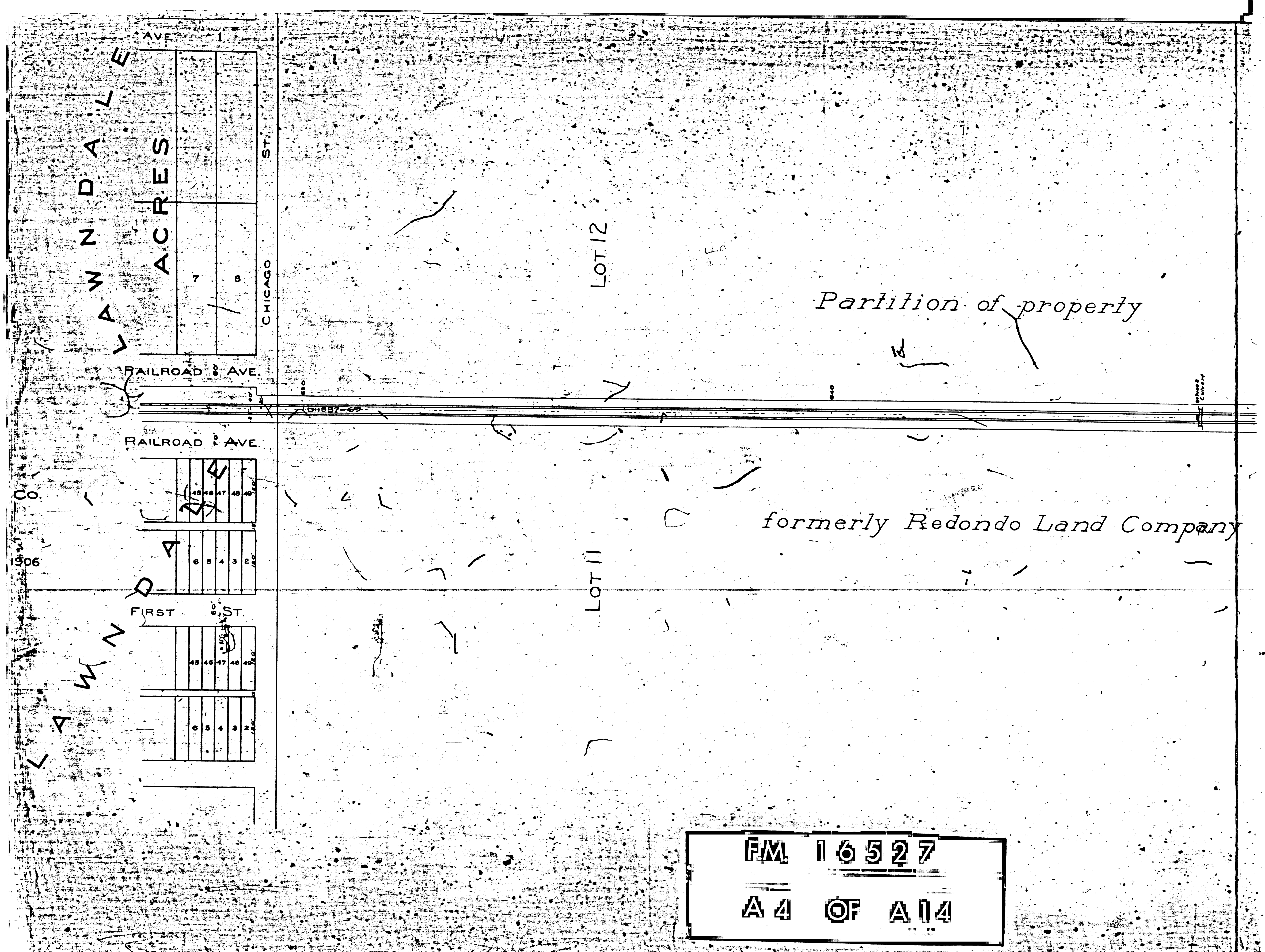
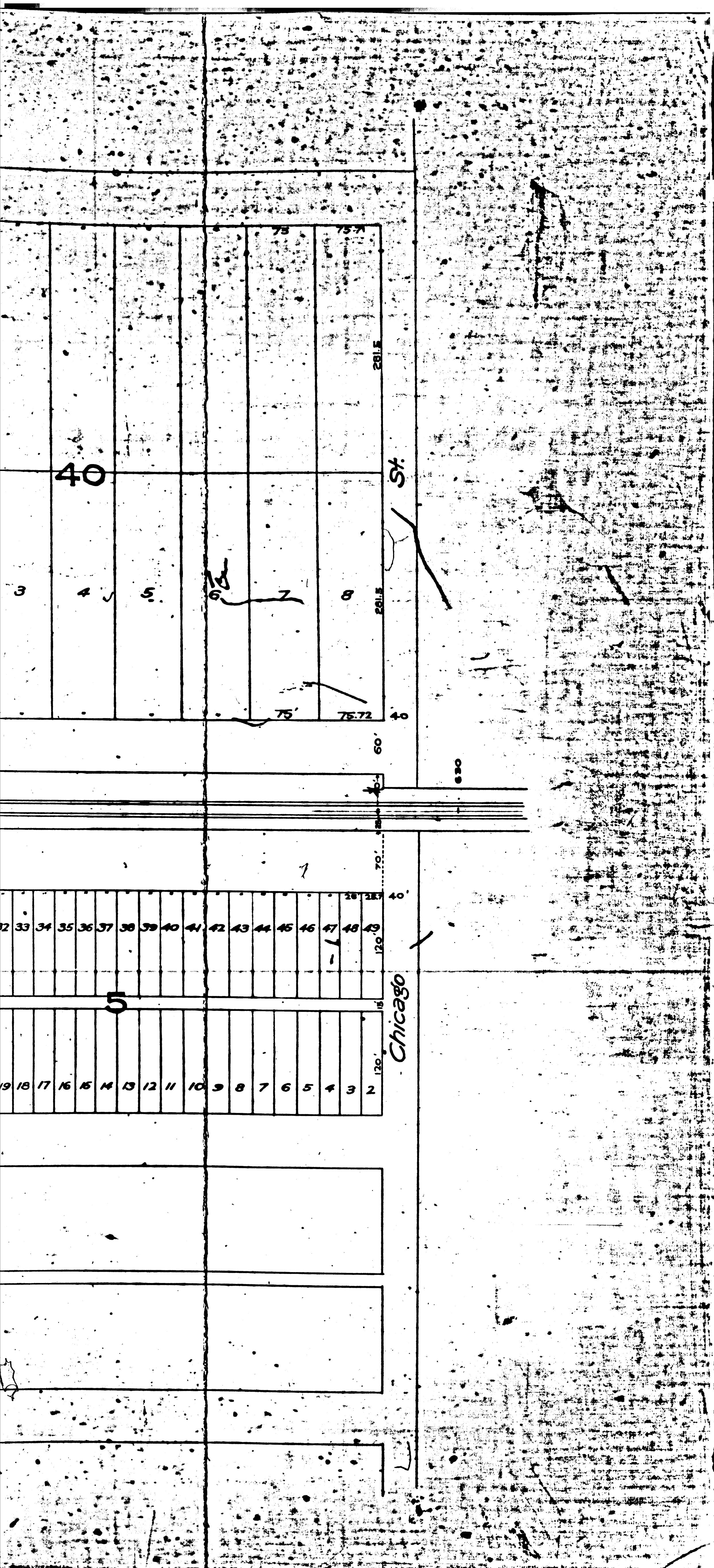


60
 A. E. POMEROY
 18.66 Acres
 M. R. 16-49

DIVISION



FM 16527
 A1 OF A14



Partition of property

formerly Redondo Land Company

FM 16527
A 4 OF A 14

T. 3 S. R. 14 W.

21 28

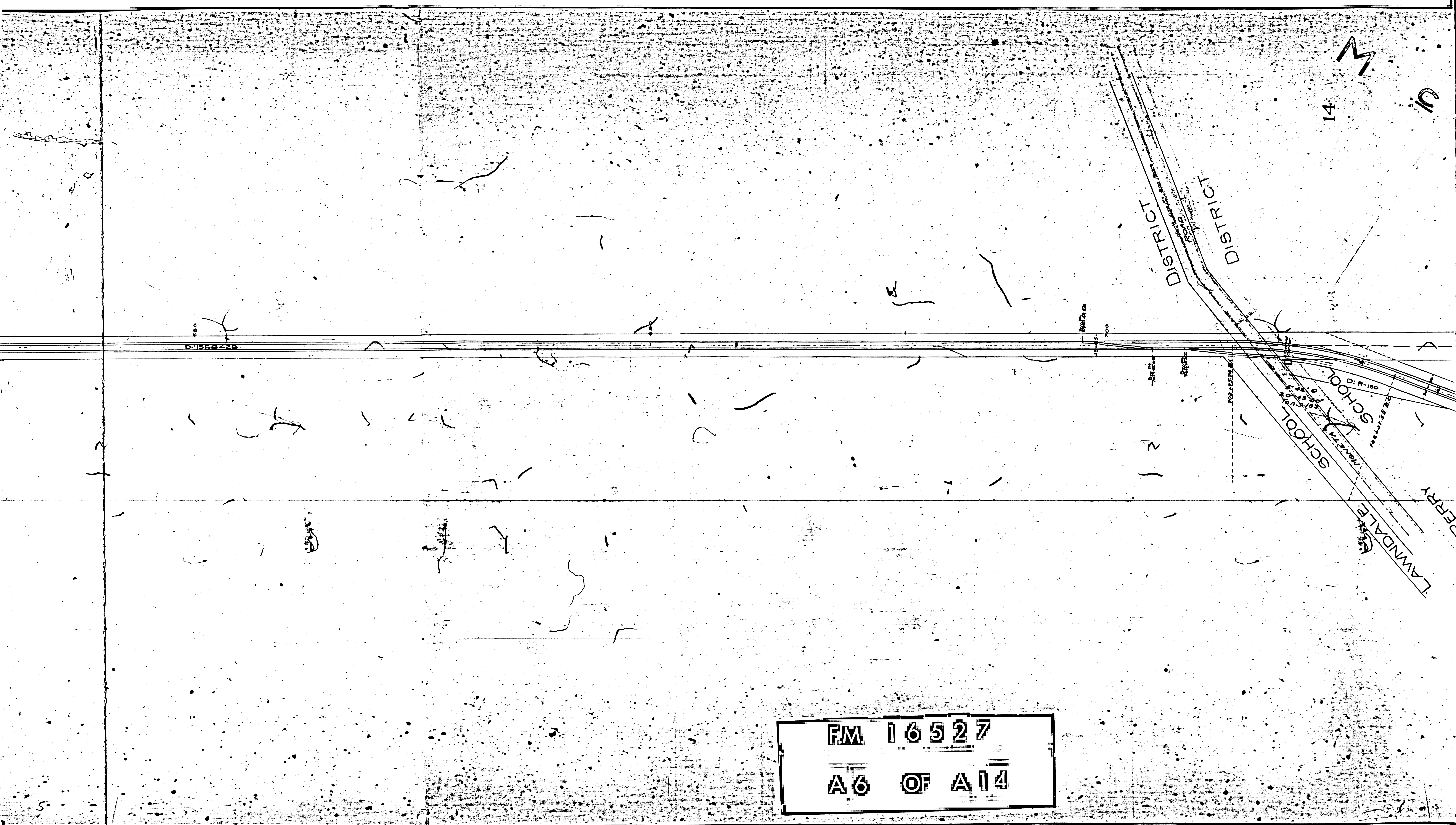
LOT 17

LOT 18

perly

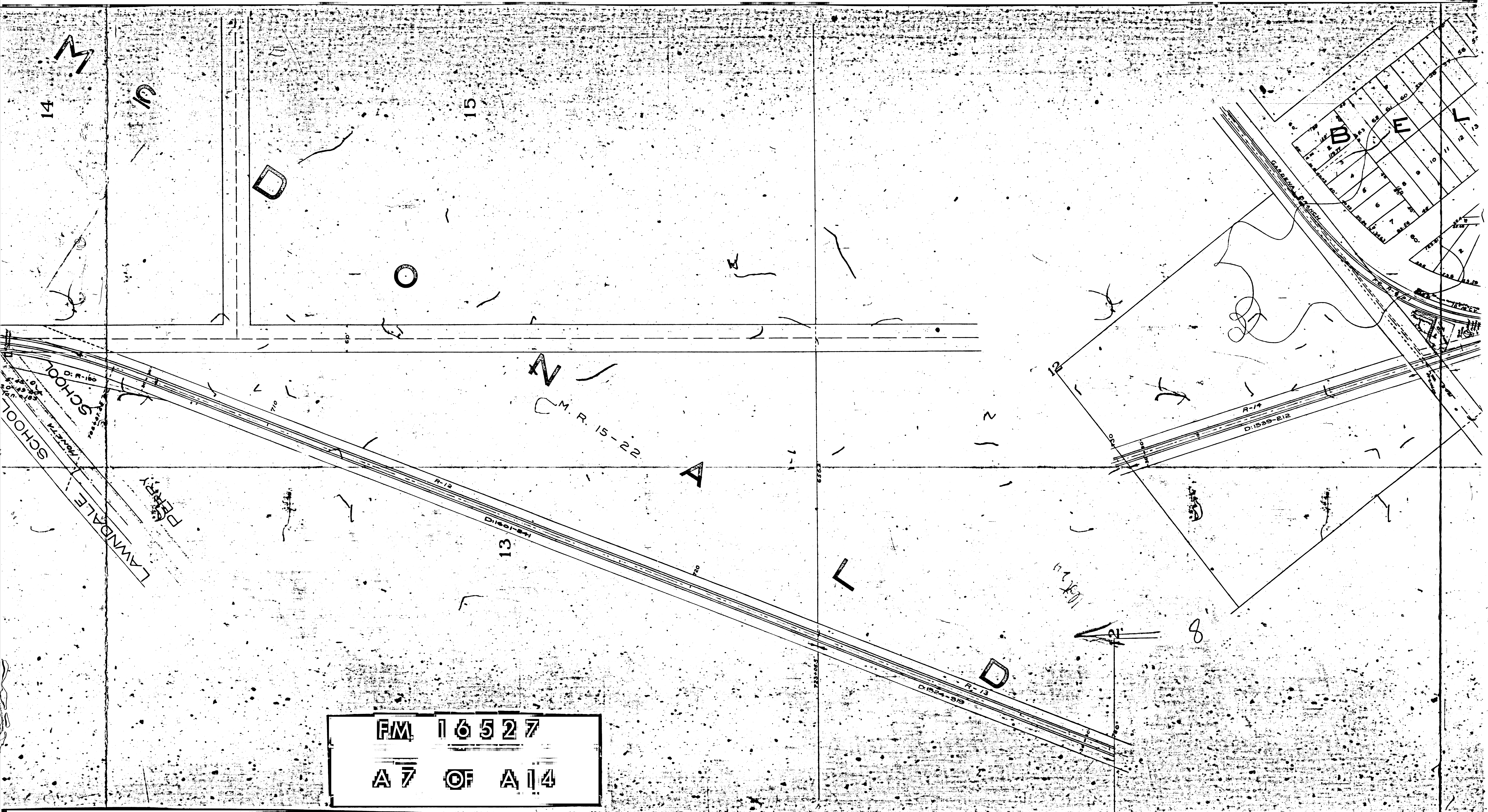
nd Company

FM 16527
A5 OF A14

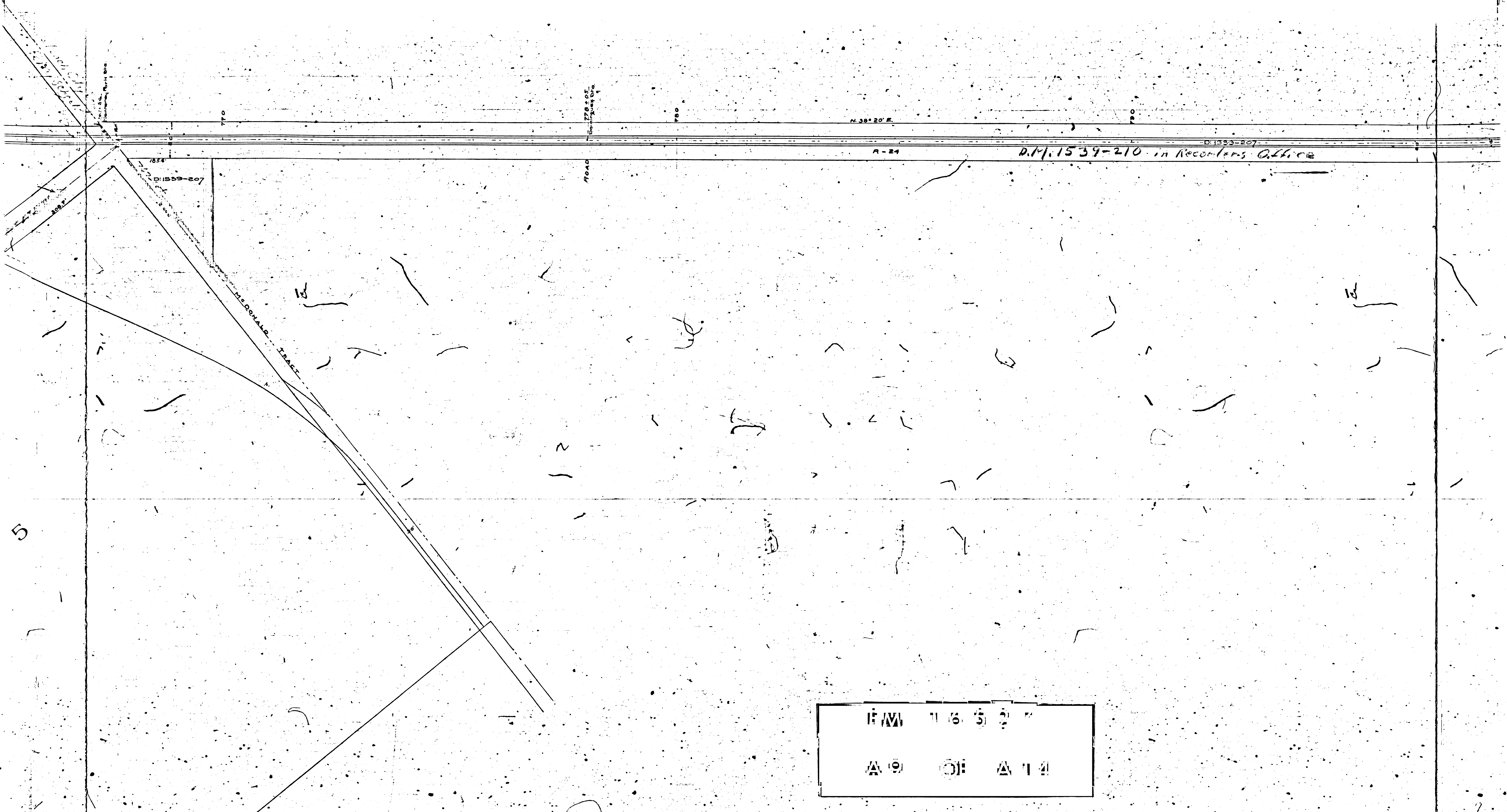


FM 16527

A6 OF A14



F/M 16527
A 7 OF A 14



5

D. 1534-207

N. 38° 20' E.

A-24

D.M. 1534-210 in Recorder's Office

D. 1534-207

ROAD
SECTION OF

McDONALD TRACT

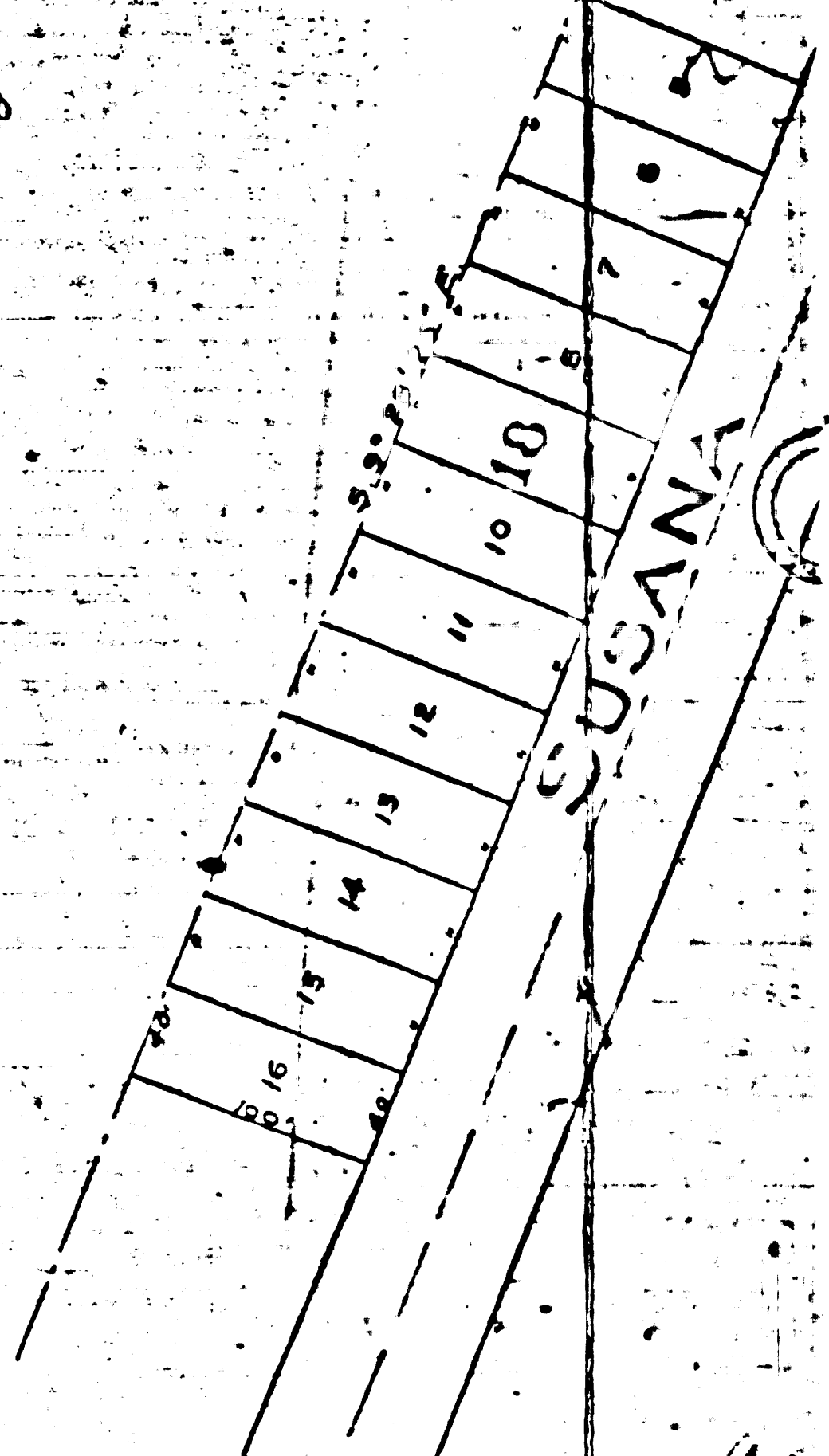
15	16	17	18	19	20
△ 10	○ 11	△ 12	△ 13	△ 14	△ 15

Curve Taper = 2
Both Tracks
Δ = 30° 45'
Tang. = 376.04

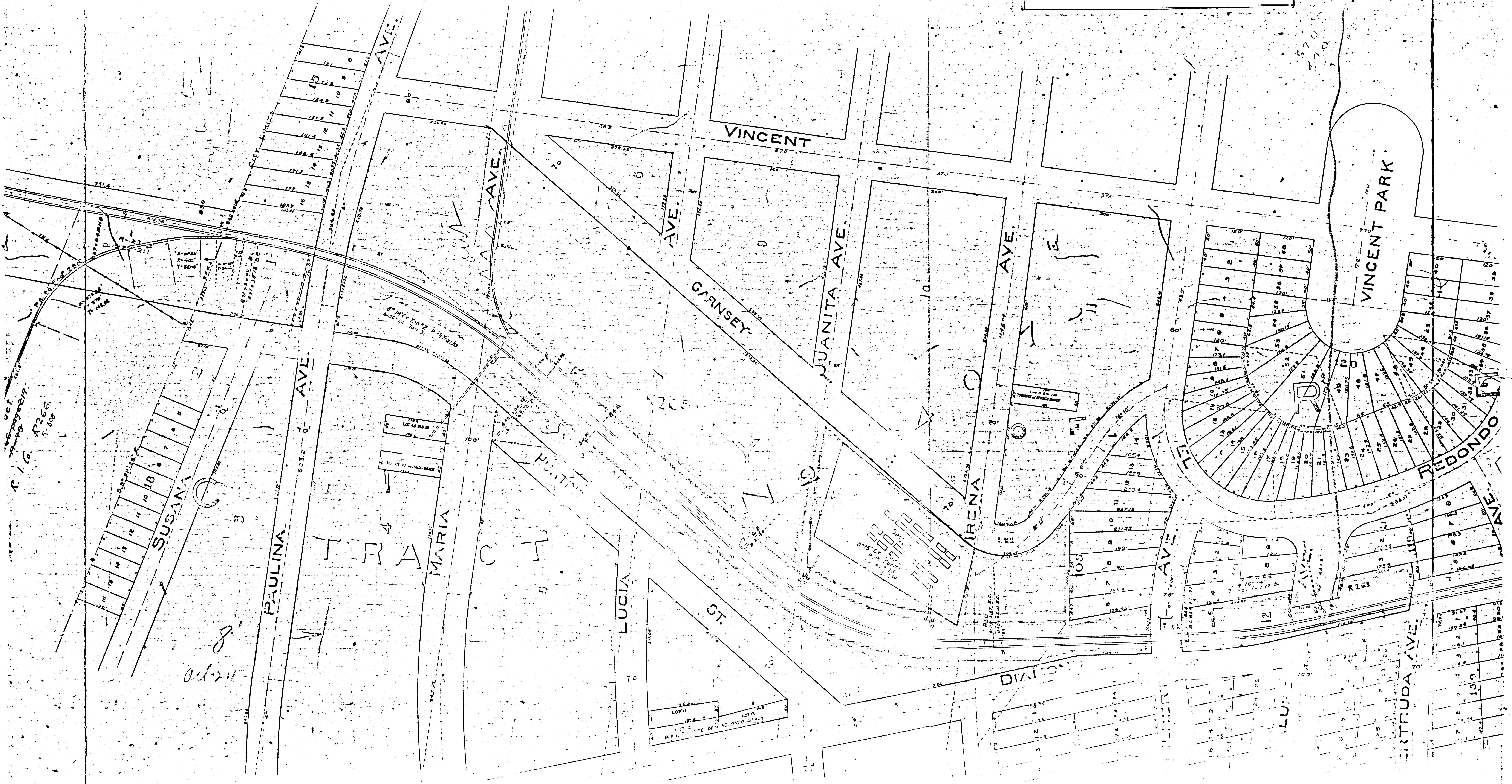
STEEL WORKS

100 AC Tract
R-16 R-266
R-308

100 AC Tract
Deeds BK 666 P 211
R-16 R-266
R-308



11 6 5 2 7
11 0 0 1 4



11.21
 8
 100'

11.21

LOT 11
 LOT 12
 BLK 717
 OF REDONDO BEACH

DIAGONAL

ENTRUDA AVE.

REDONDO AVE.

VINCENT PARK

VINCENT

GARNESEY

JUANITA AVE.

IRENA AVE.

PAULINA

SUSAN

MARIA

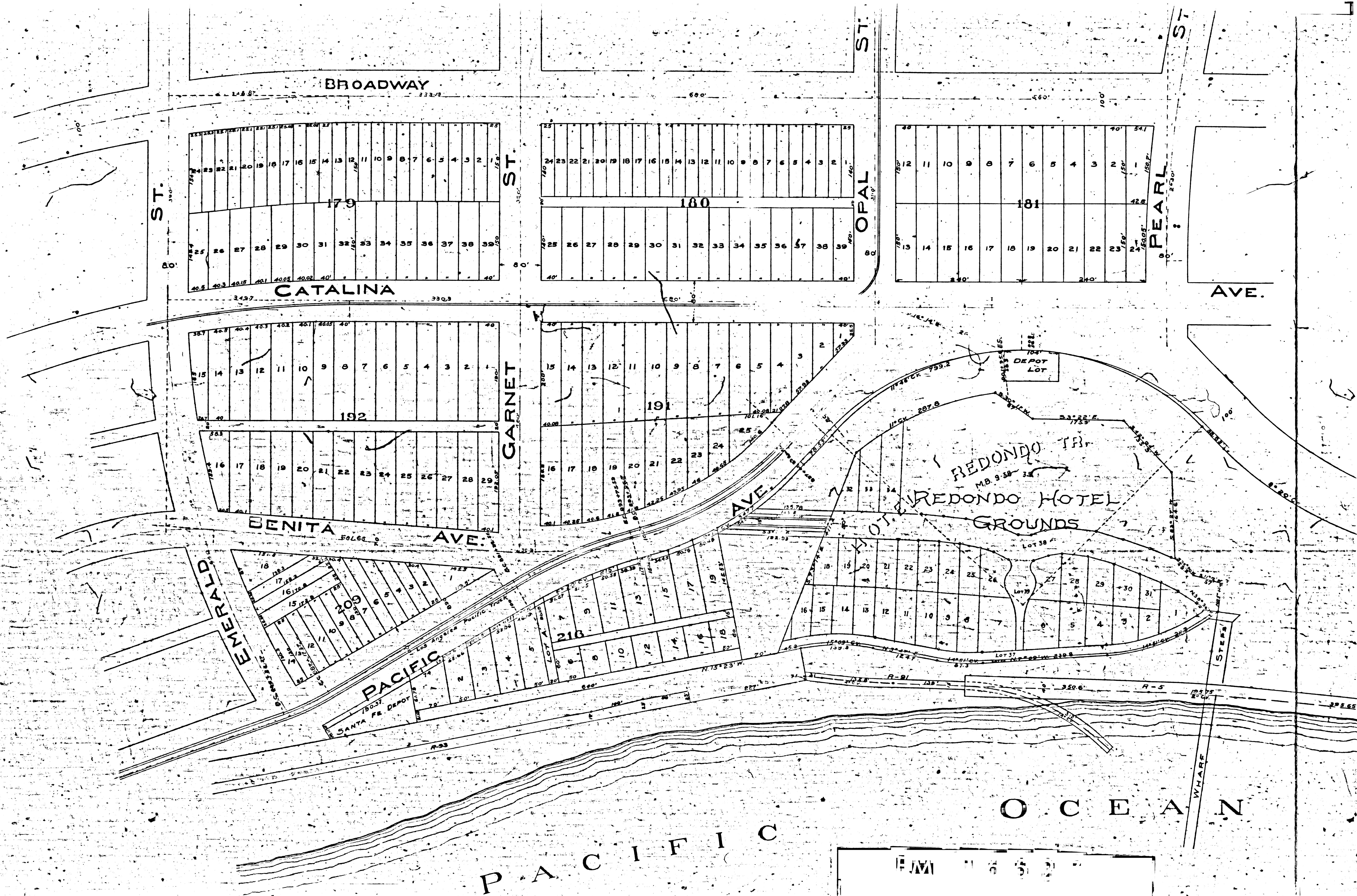
LUCIA

ST.

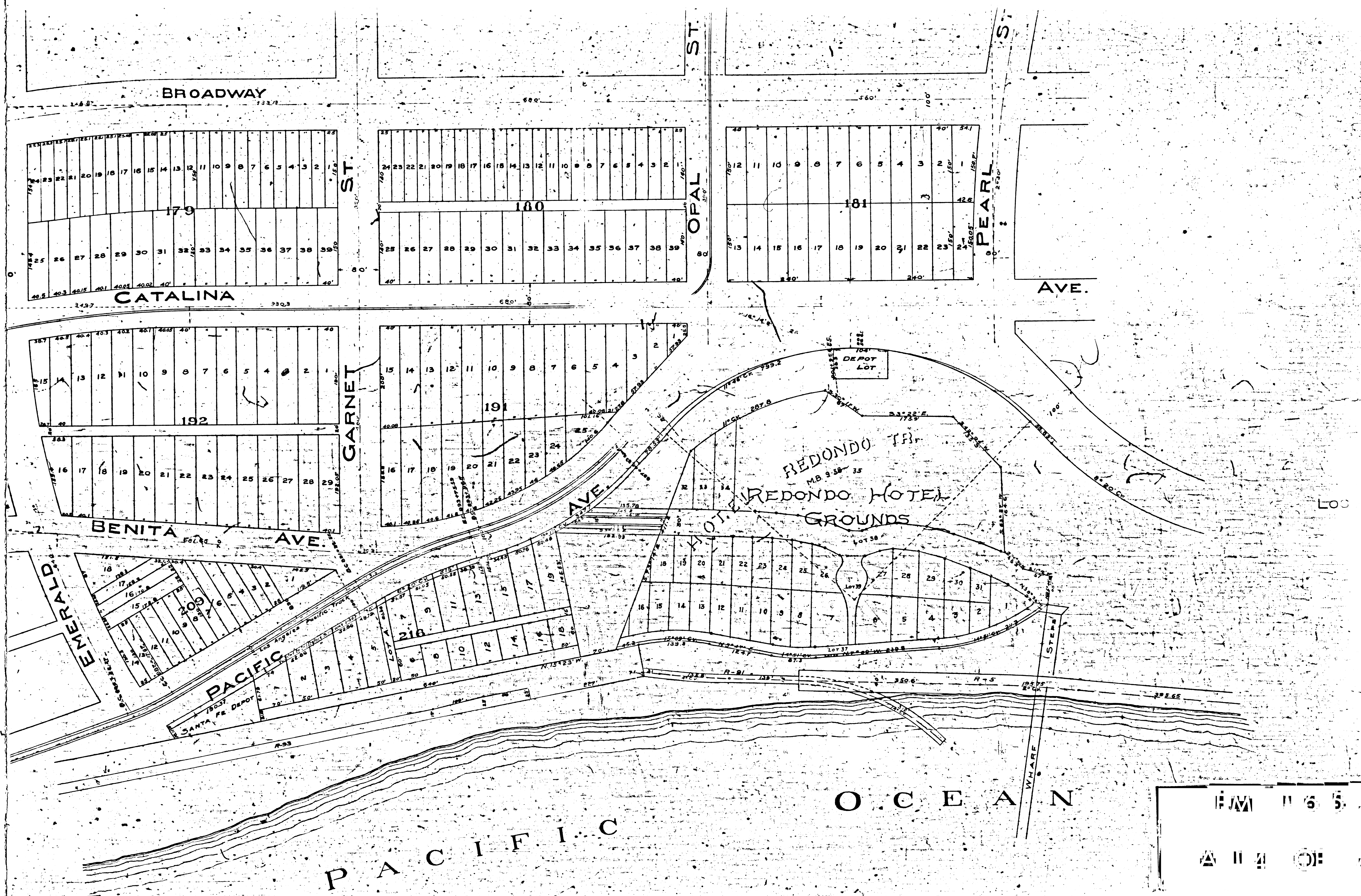


1652
 2 OF 4

OCEAN



JUN 16 5 2
 A 1 1 A 1



1 1/2" = 100'
 1" = 200'
 1/2" = 400'
 1/4" = 800'