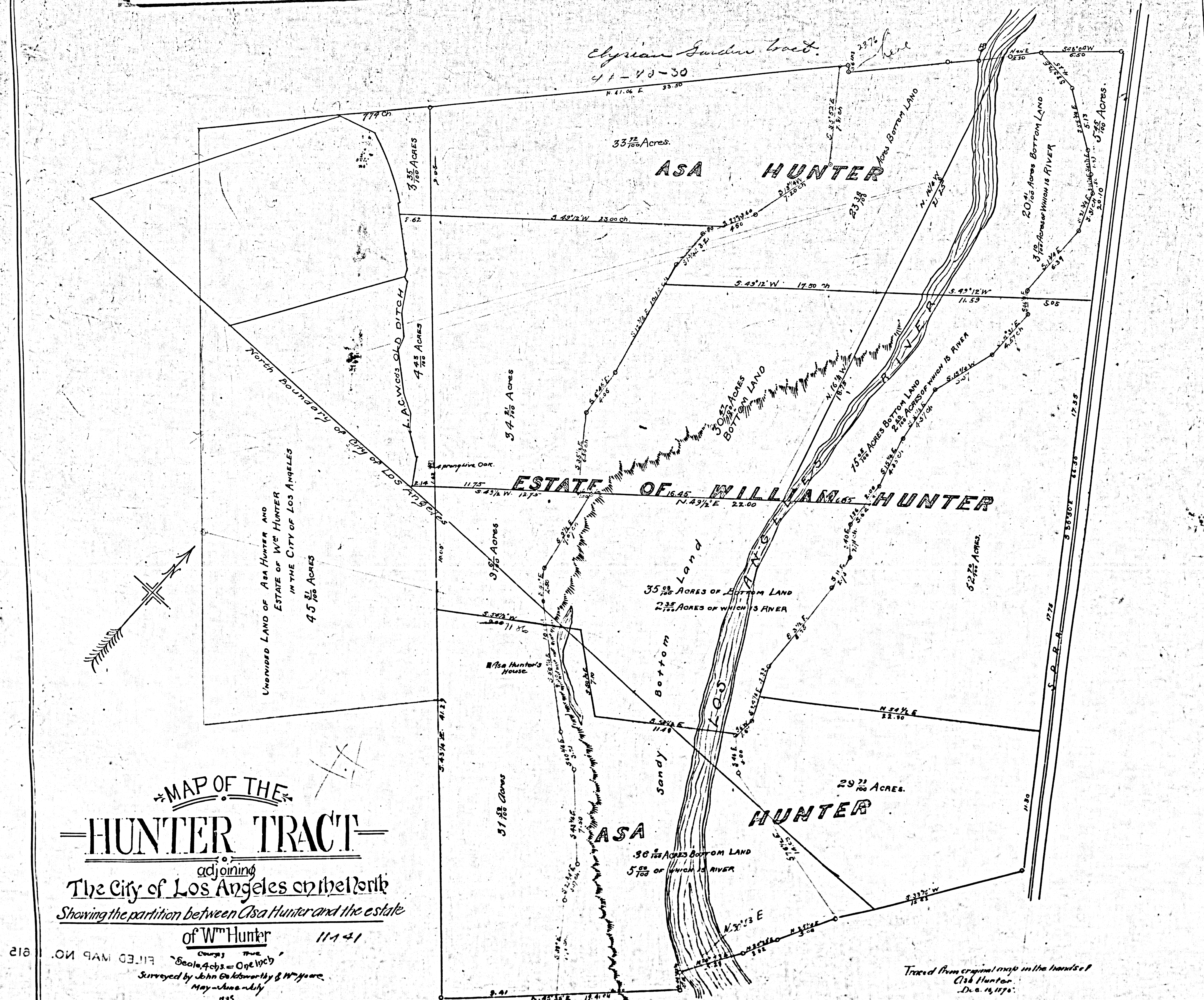


F.M. 16615



MAP OF THE HUNTER TRACT

adjoining
The City of Los Angeles on the North
Showing the partition between Asa Hunter and the estate
of W^m Hunter

11141
County of Los Angeles
Scale, 4 chs. = One Inch
Surveyed by John G. Baker, M. & W. Moore,
May - June 1875
E. 1515 F.M.
E. 513362 E. 31,9055
C.F. 355