

FILED MAP NO 18850

FILED MAP NO 18850

L. A. O. A.

Mary Lane

Alameda St.

L. A. O. A.

Cayetano Alley

St.

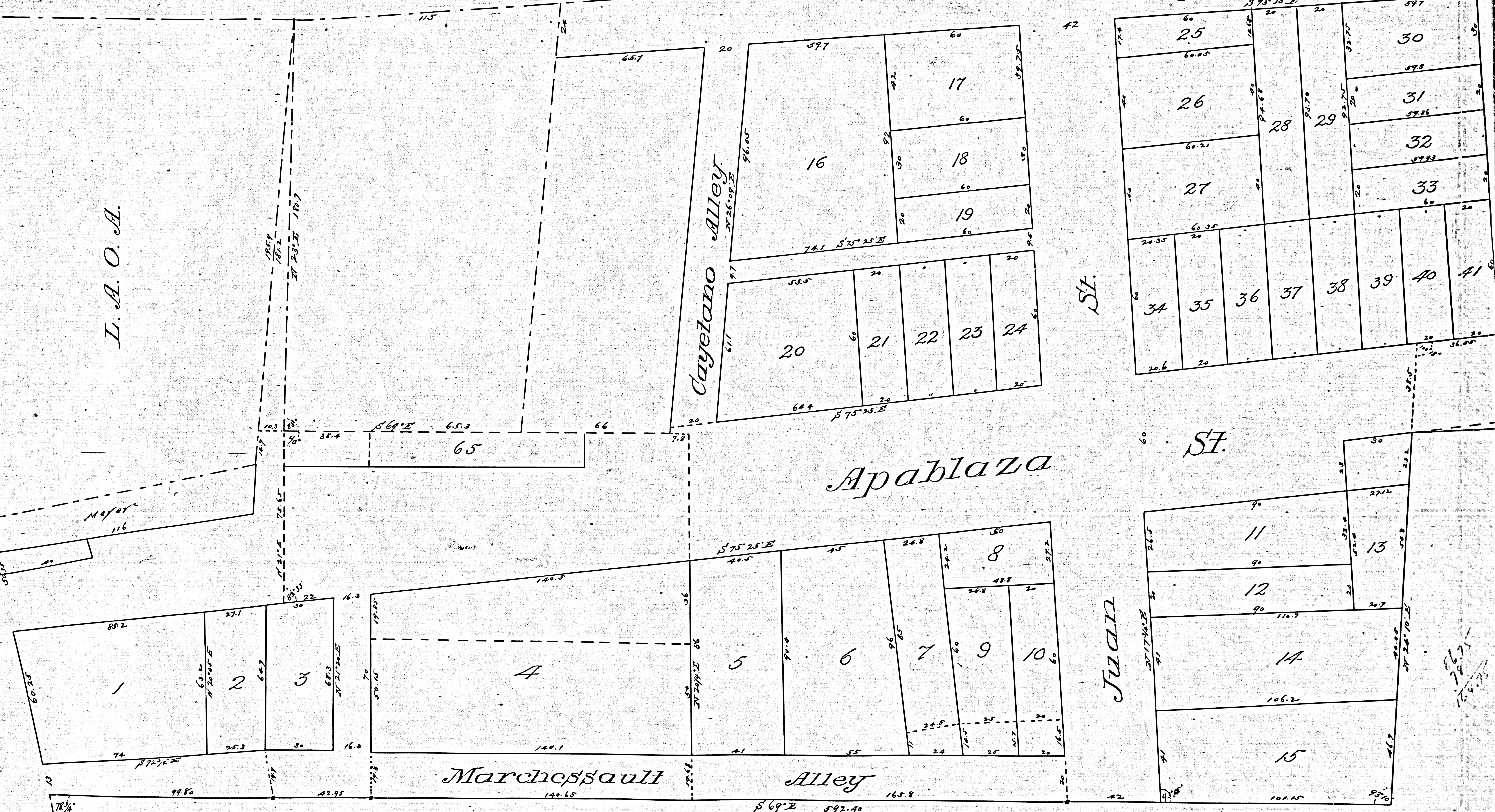
Apablaza

St.

Juan

Marchessault Alley

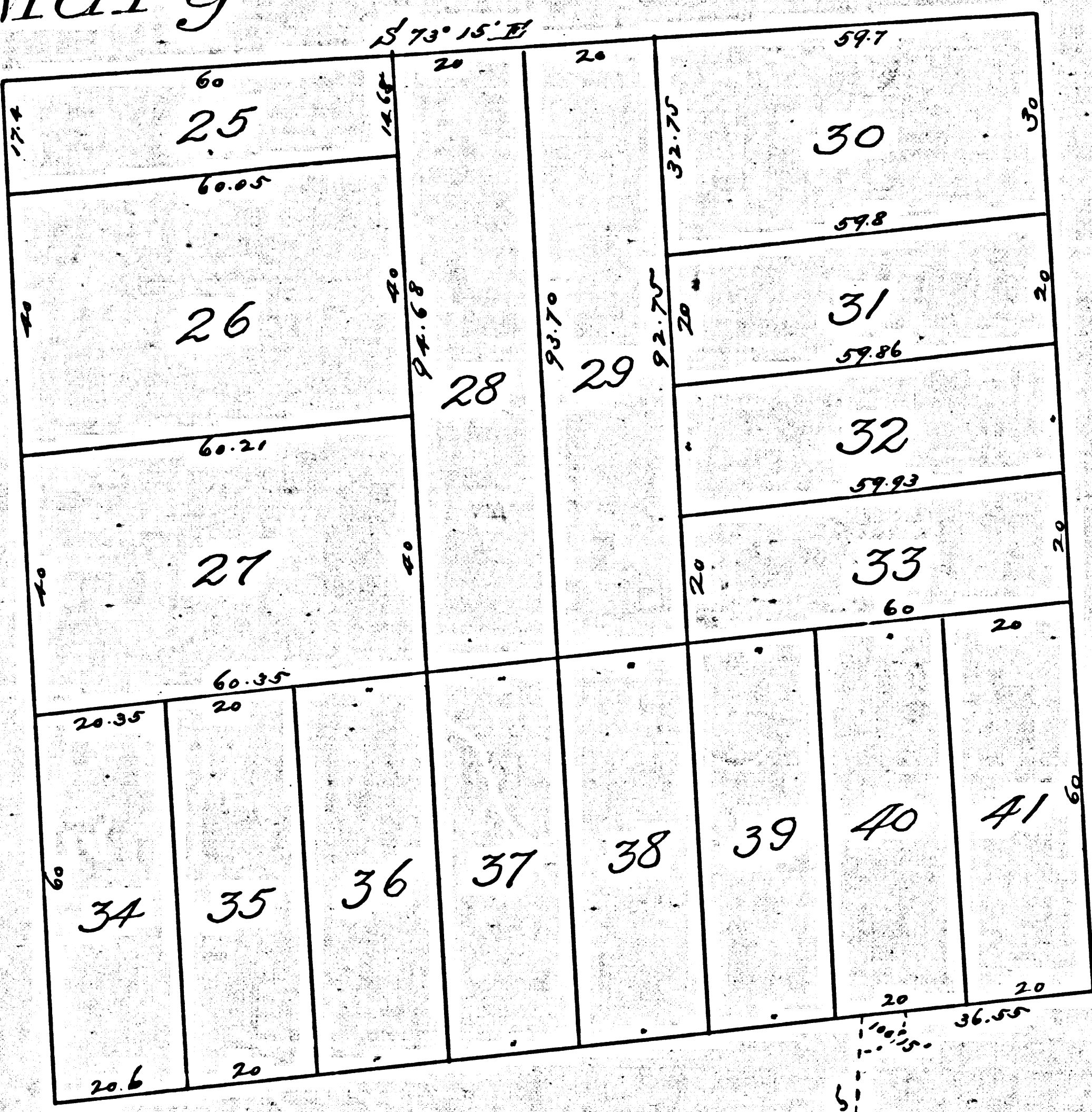
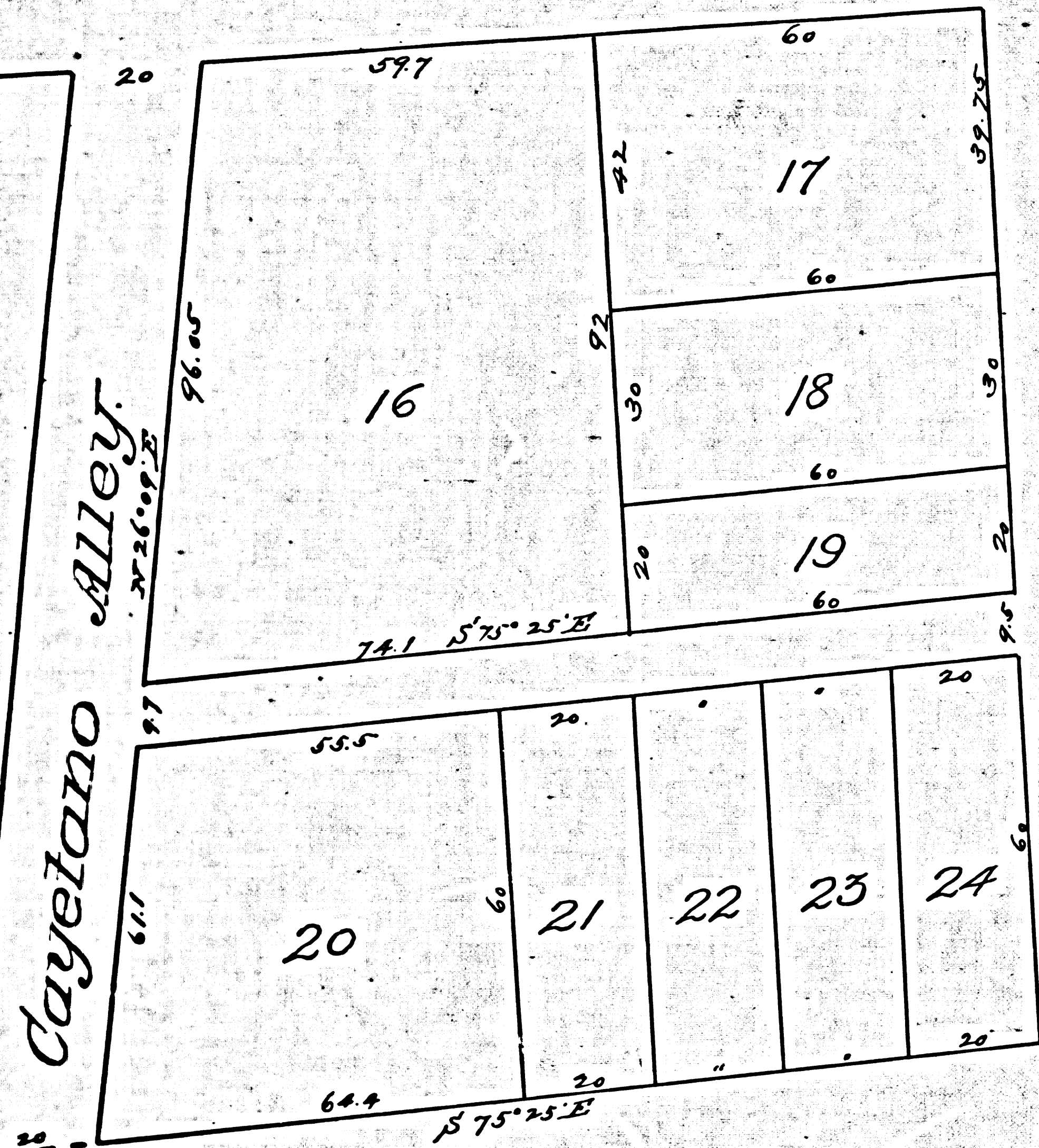
Alley



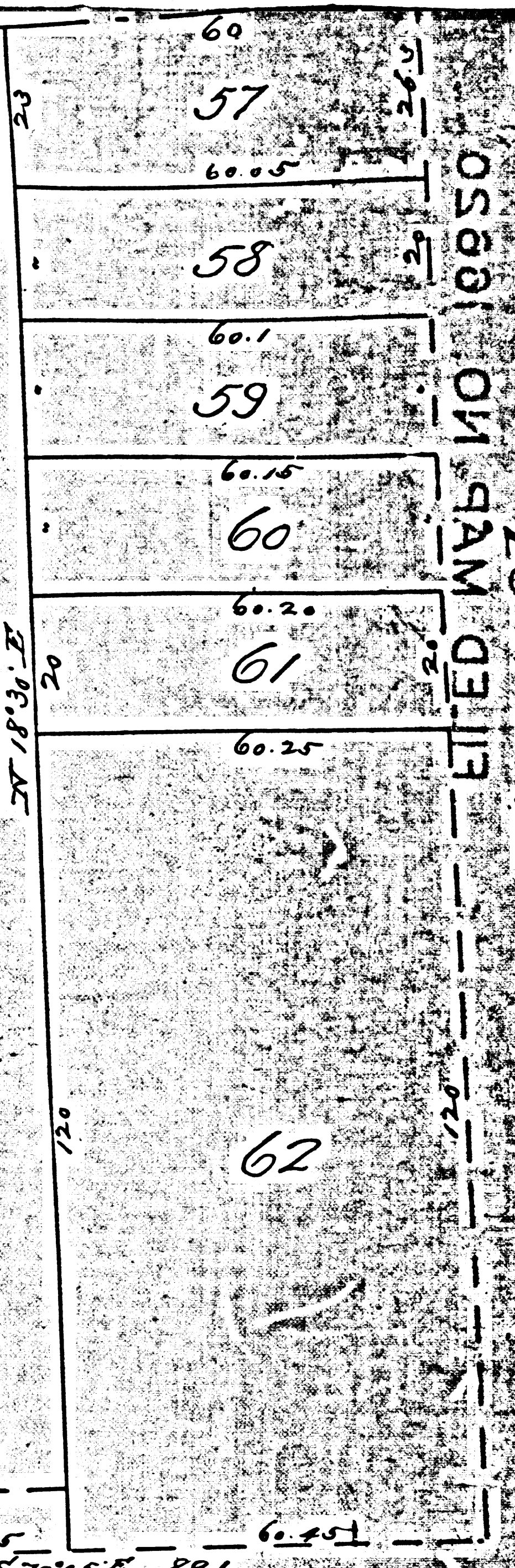
F.M. 16620  
 A1 OF A2

L. A. O. A.

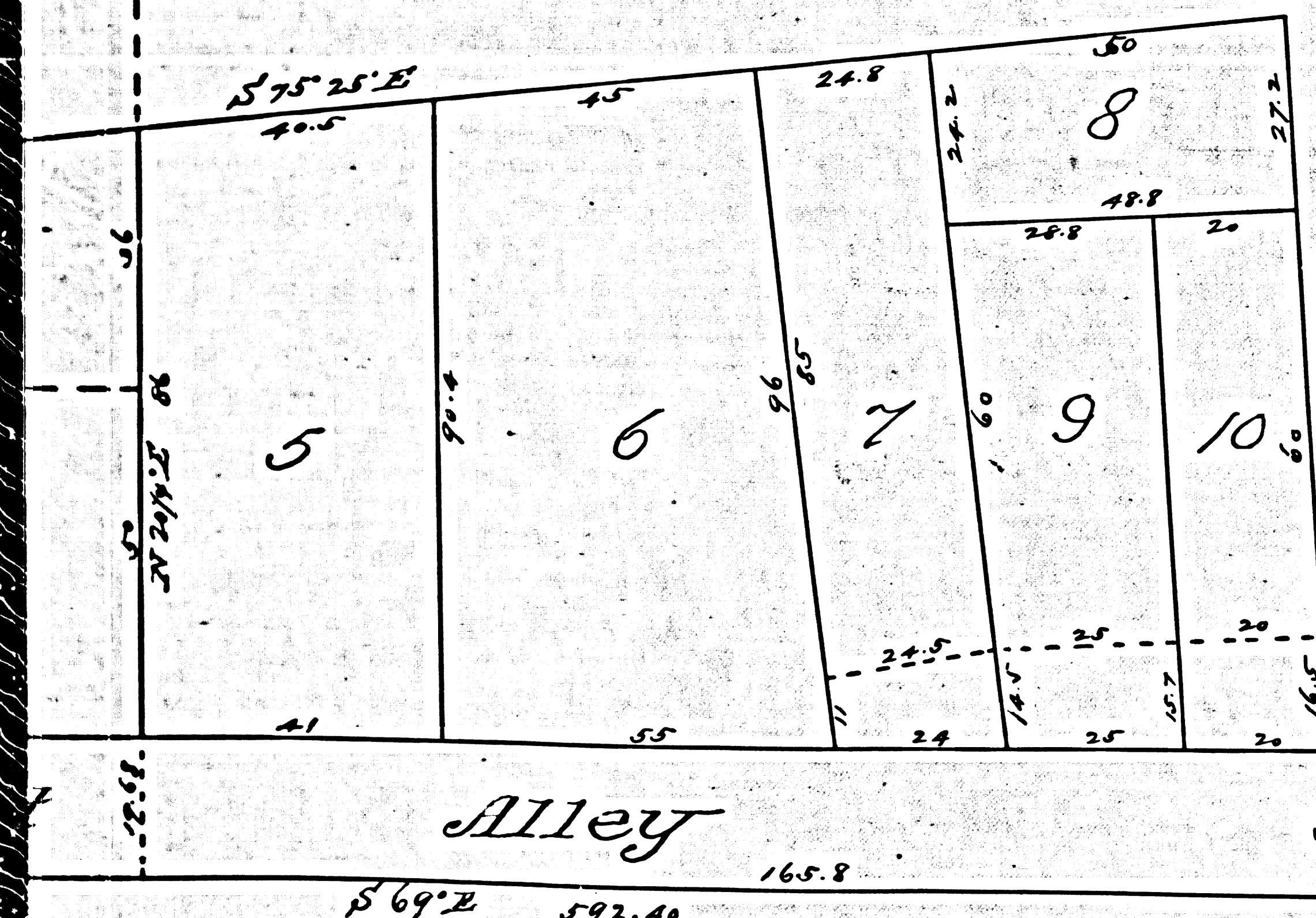
Mary Lane



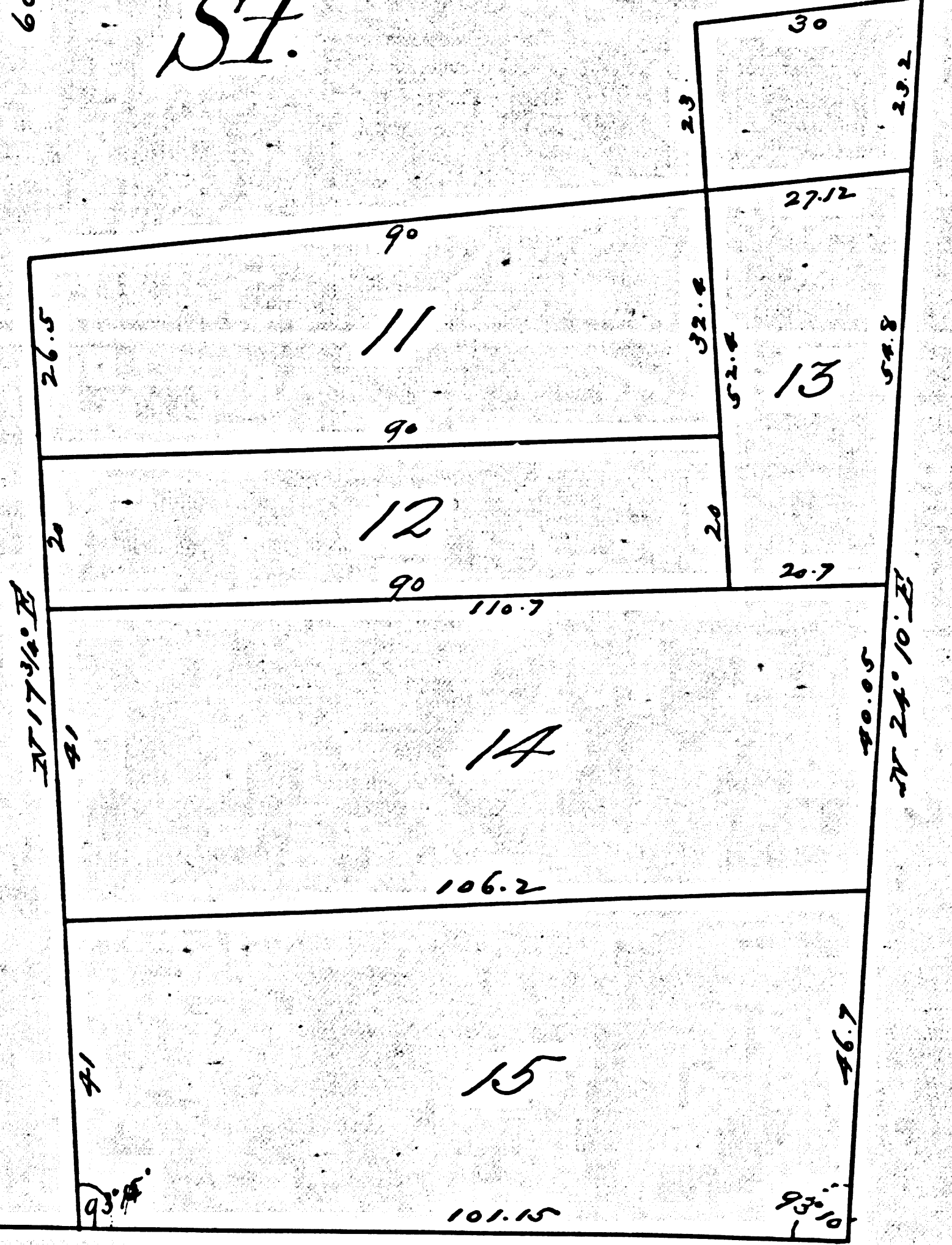
Concha St.



Apablaza



Juan St.



Keller

125.45  
121.15  
46.40  
6.35  
15.75

Map of the  
**APABLAZA TRACT**

IN THE CITY OF LOS ANGELES, CAL.  
subdivided by Cayetano Apablaza.

Scale of One inch to 30 ft.

True courses Var = 14 1/4° E.

Hansen & Salano, Sur

Jan'y 1888.

1891

F.M. 16620  
A2 OF A2

157-45

FILED MAP NO. 18950