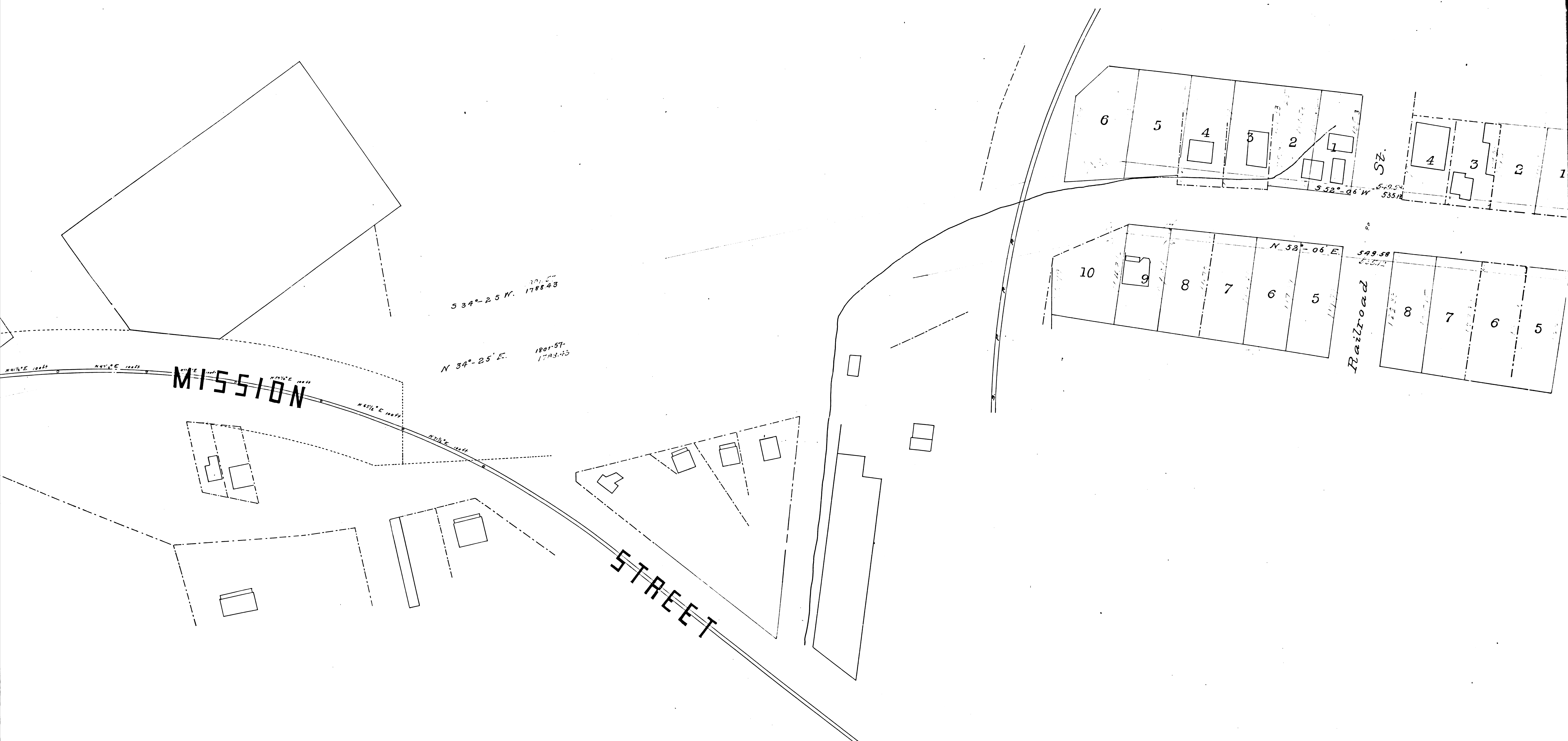


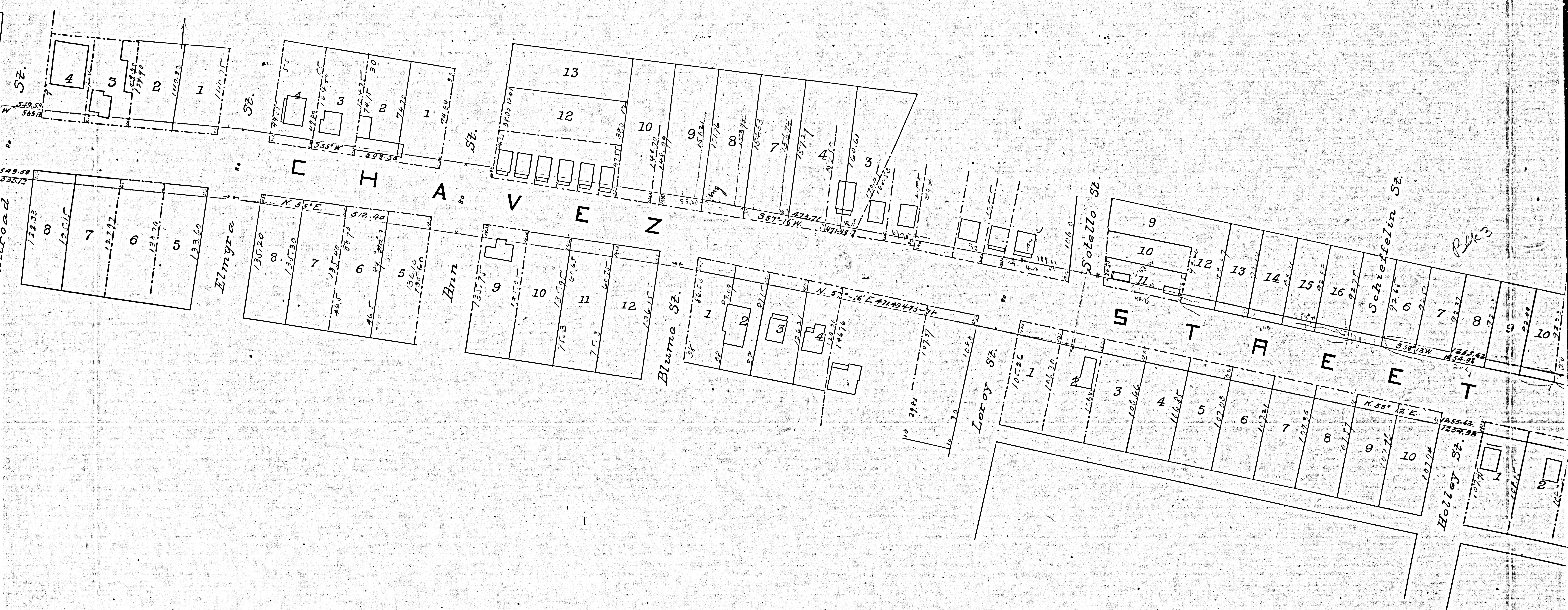
Scale 50 ft. to One Inch
Pencil lines on original here indicated in Green Ink
(Enclosed)



F.M.	1	6	6	2	4
A	1	OF	A	4	



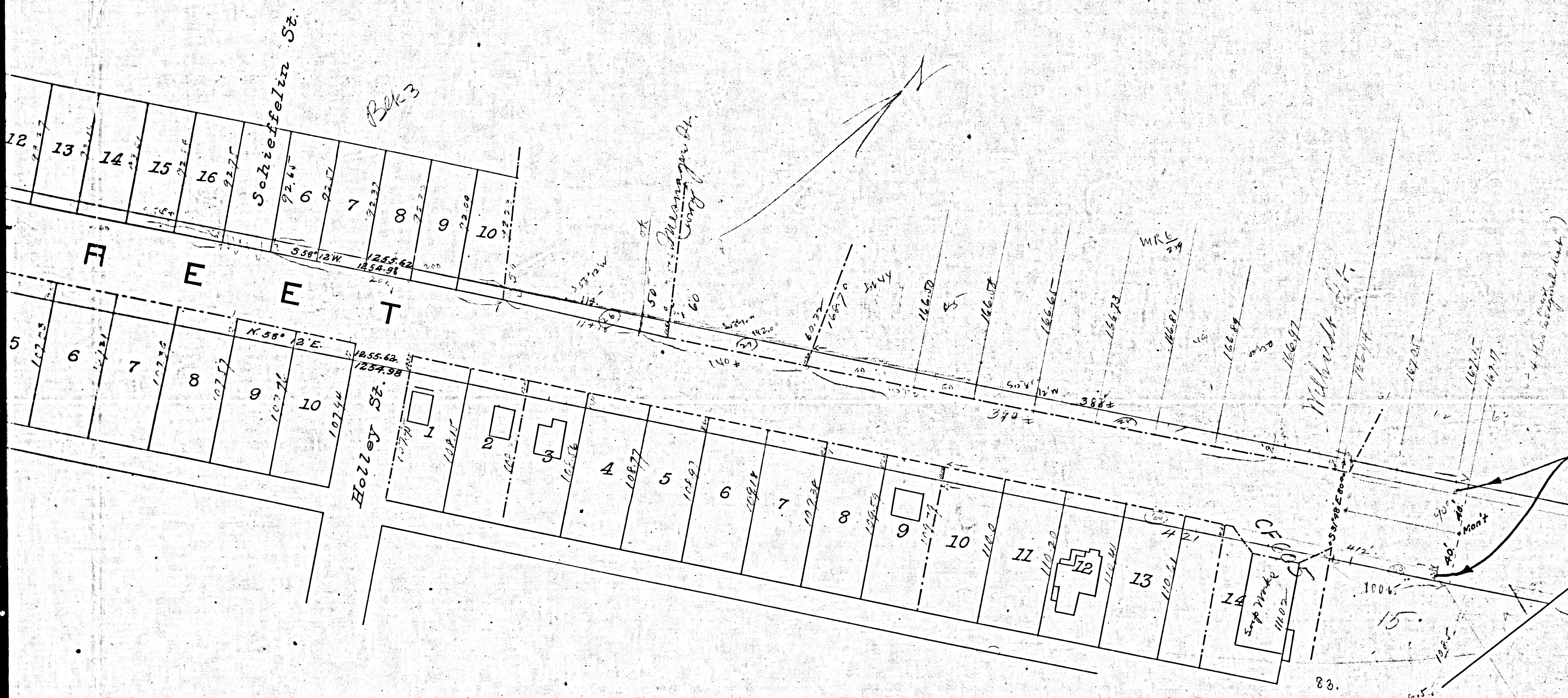
F.M.	1	6	6	2	4
A	2	OF	A	4	



F.M.	1	6	6	2	4
A	3	OF	A	4	

2007222

Blk 3



AN INVESTIGATION OF THE CITY ENGINEER'S RECORDS FEB. 16 1917 SHOWED THAT THE CITY DOES NOT CLAIM BY THIS CONDEMNATION ANYTHING ON THE NORTH SIDE OF MAIN ST. WHICH LIES EAST OF THE EAST LINE OF LOT 52 WILHARDT TR. (M.R. 6-283) NOR ANYTHING ON THE SOUTH SIDE OF MAIN ST. WHICH LIES EAST OF THE NORTHEASTERLY LINE OF LOT 15 POMEROY & MILLS SUB. (M.R. 5-199).

Superior Court Case No 5495
 Confirmed and filed May 5th 1887
 City of L.A. vs. U. M. Griffith

Bonds St. Assess't Map in Book 17, pg 49
 Liens Book 3 page 1. (City Clerk) 1904

Remaining fractions of Lots copied from Book 17 pg 49 (St. Supt.)
 (These do not quite agree with cuts on this map, or with Comm'r's descriptions)

Scale - 50 ft. to One Inch.

Copied from City Engineer's map No 464:
 Feb. 16, 1895

2068

F.M.	1	6	6	2	4
A	4	OF	A	4	