

San Vicente Rancho

East Santa Monica Avenue

NO 2
Shemng continuation of line of Boulevard
Westerly from land of Andron Stephens to the
Compton and Santa Monica Road
(in East Santa Monica)

F.M. 16672
A1 OF A3

520308 D:1-205 } John J. Charnock
rec. 1-14-89 } 80' strip. Can. pt. where fence line bet. Tibbels & Stephens would
intersect my N.E. 1/4 line if extended in a str. line
N.E. would intersect my N.E. 1/4 line if extended in a str. line
of Antonio Machado.

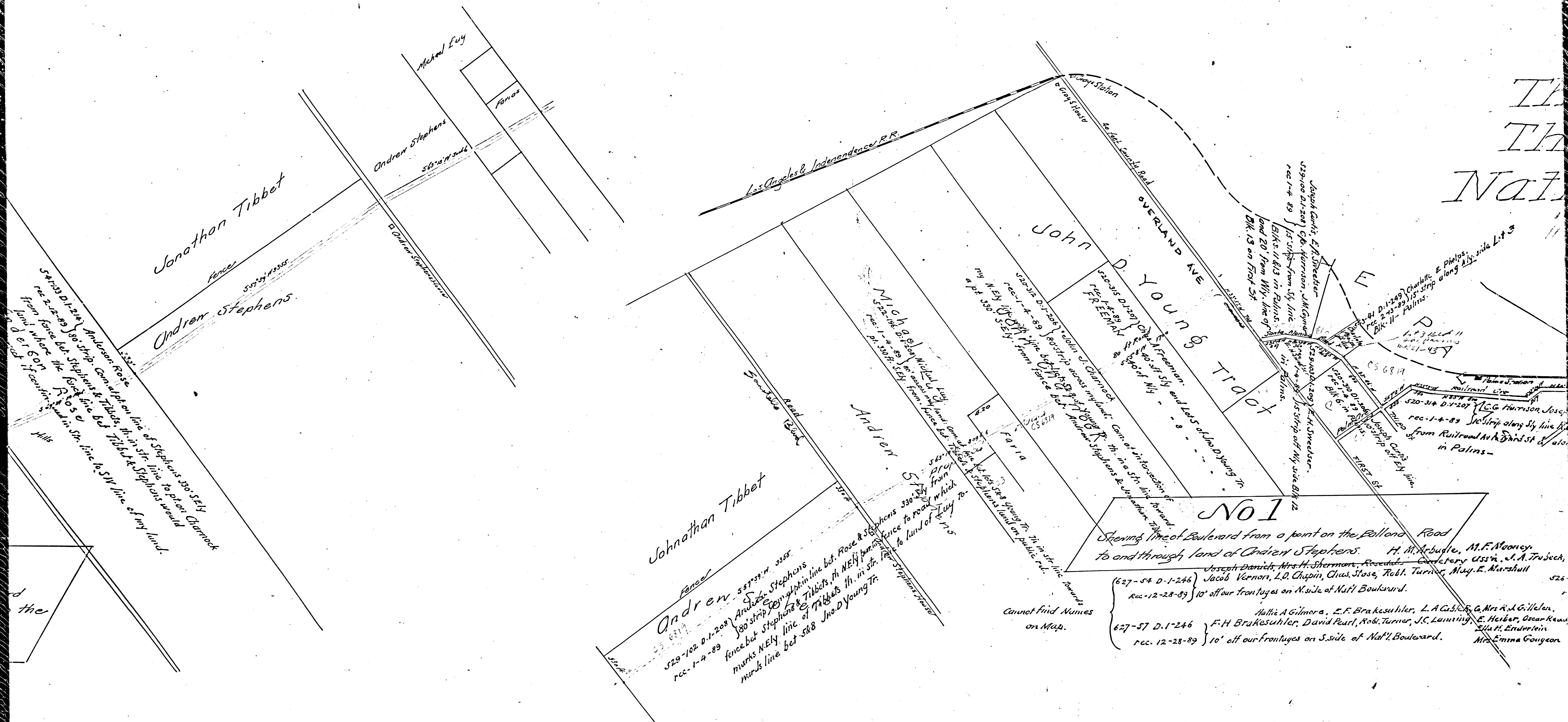
547133 D:1-214 } Anderson Rose
rec. 2-12-89 } 80' strip. Can. pt. on line of Stephens 30' S.E. 1/4
land where the fence line bet. Tibbels & Stephens would
intersect if continued in a str. line to S.W. line of my land.

520311 D:1-206 } Lagan Dealer
rec. 1-14-89 } 80' strip. Can. pt. where fence line bet. Tibbels & Stephens would
intersect my N.E. 1/4 line if extended in a str. line to S.W. line of my land.

54721-01-217 } Antonio Machado
rec. 2-18-89 } 80' strip. Can. pt. where fence line bet. Tibbels & Stephens would
intersect my N.E. 1/4 line if extended in a str. line to S.W. line of my land.

Santa Monica Road
and
to Santa Monica

THE
THE
NAT



No 1

Opening line of Boulevard from a point on the Overland Road to and through land of Andrew Stephens.

H. M. Arbutle, M. F. Mooney, Joseph Daniels, Mrs. H. Sherman, Rosalind Comptery, U.S. N. J. A. Trudick, Jacob Vernon, L. D. Chapin, Chas. Stoss, Robt. Turner, May E. Marshall

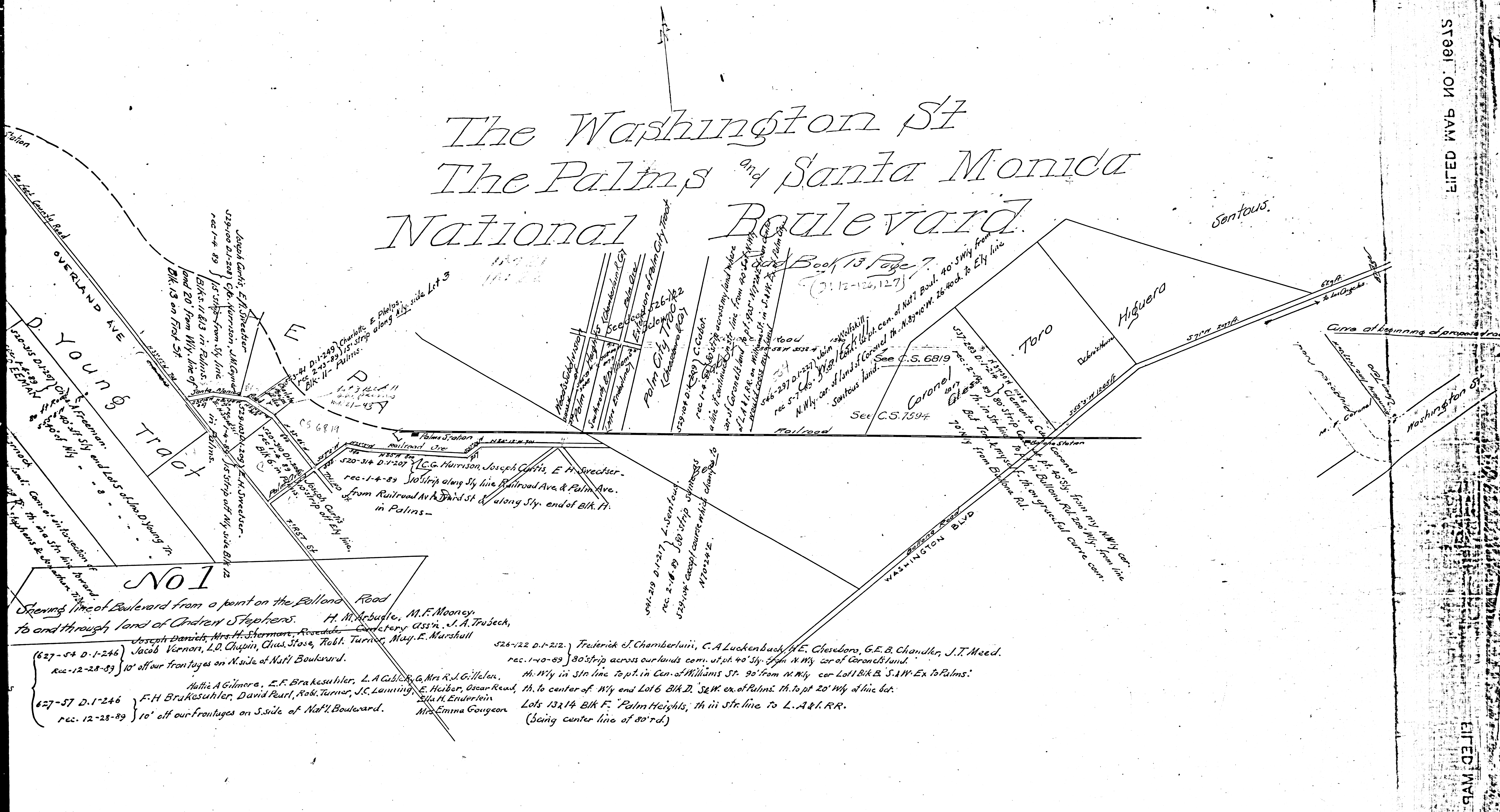
627-54 D. 1-246 } 10' off our frontages on N. side of Nat'l Boulevard.
 rec-12-28-89

627-57 D. 1-246 } F. H. Brakesuhler, David Pearl, Robt. Turner, J. C. Lanning, E. Heiber, Oscar Reau, Mrs. Emma Gougeon
 rec-12-28-89

F.M. 16672

A2 OF A3

The Washington St The Palms and Santa Monica National Boulevard



FILED MAP NO 18215

FILED MAP NO 18215

No 1
 Showing line of Boulevard from a point on the Bullana Road
 to and through land of Andrew Stephens. H. M. Arbuckle, M. F. Mooney,
 Joseph Daniels, Mrs. H. Sherman, Rosebush Cemetery Ass'n, J. A. Truseck,
 Jacob Vernon, L. D. Chapin, Chas. Stose, Robt. Turner, May E. Marshall

524-122 D. 1-212. Frederick J. Chamberlain, C. A. Luckenbach, E. Chesboro, G. E. B. Chandler, J. T. Meed.
 rec. 1-10-89 } 80' strip across our lands com. at pt. 40' Sly. of N. Wly. cor. of Coronado's land.
 th. Wly. in Str. line to pt. in Cen. of Williams St. 90' from N. Wly. cor. Lot 1 Blk B. S. A. W. Ex. to Palms.
 627-57 D. 1-246 } F. H. Brakesuhler, David Pearl, Robt. Turner, J. C. Leming, E. Heiber, Oscar Read, th. to center of Wly. end Lot 6 Blk D. S. W. ex. of Palms. th. to pt. 20' Wly. of line bet.
 rec. 12-28-89 } 10' off our frontages on S. side of Nat'l Boulevard. Ella M. Enderlein, Mrs. Emma Gougeon
 Lots 13 & 14 Blk F. Palm Heights, th. in Str. line to L. A. & I. R.R.
 (being center line of 80' rd.)

F.M. 16672
 A3 OF A3