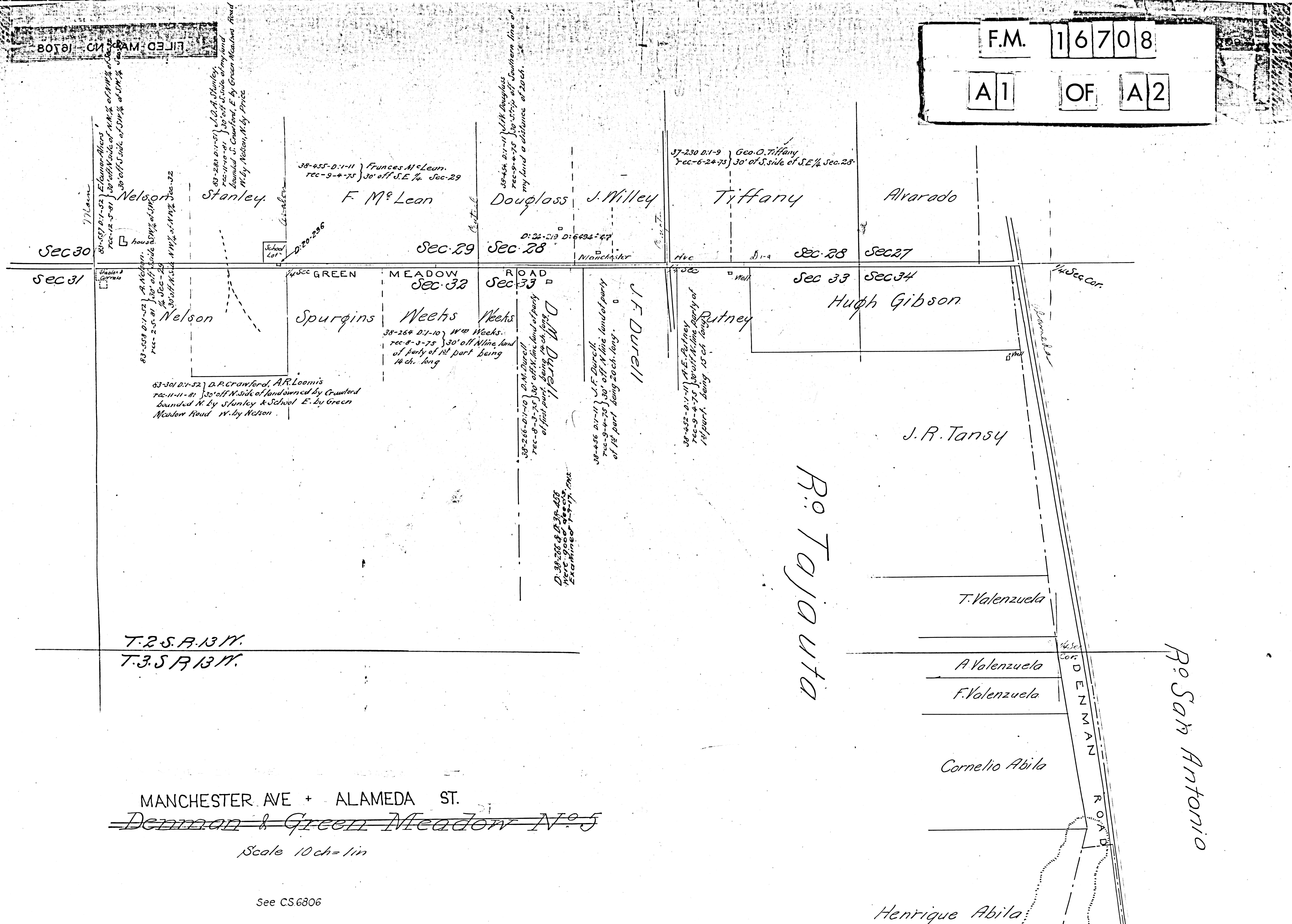


F.M. 16708  
A1 OF A2

80781 - CM - FILED - MAP - 16708



T. 2 S. R. 13 W.  
T. 3 S. R. 13 W.

MANCHESTER AVE + ALAMEDA ST.  
~~Denman & Green Meadow No 5~~

Scale 10 ch = 1 in

See CS.6806

Henrique Abila

R. O. San Antonio

R. O. Tajauta

T. Valenzuela

A. Valenzuela

F. Valenzuela

Cornelio Abila

J. R. Tansy

Hugh Gibson

Rutney

J. F. Durrell

D. M. Durrell

Weeks  
Weeks

Spurgins

Nelson

Alvarado

Tiffany

J. Willey

Douglass

F. M. Lean

Stanley

Sec 30

Sec 31

Sec 29

Sec 28

Sec 28

Sec 27

Sec 33

Sec 34

GREEN MEADOW ROAD

Hvc

1/4 Sec Cor.

1/4 Sec Cor.

ROAD

ROAD

77' Lane

hous

Shades & Porch

School Lot

Manchester

Well

Well

Panel

83-557 D. 1-52 E. corner of Sec 30  
rec-12-5-81 } 30' off N. side of NW 1/4 of Sec 30  
30' off S. side of SW 1/4 of Sec 30

83-553 D. 1-52 A. Nelson  
rec-2-5-81 } 30' off S. side of NW 1/4 of Sec 29  
30' off N. side of NW 1/4 of Sec 29

83-301 D. 1-52 D. P. Crawford, A. R. Loomis  
rec-11-11-81 } 30' off N. side of land owned by Crawford  
bounded N. by Stanley & School E. by Green Meadow Road W. by Nelson

38-455 D. 1-11 Frances M. Lean  
rec-9-4-75 } 30' off S.E. 1/4 Sec 29

D. 24-219 D. 6492+47

38-266 D. 1-10 D. M. Durrell  
rec-8-8-75 } 30' off N. line of party  
of party of 1st part being  
14 ch. long

D. 38-266 D. 38-266  
rec-8-8-75 } 30' off N. line of party  
of party of 1st part being  
14 ch. long

38-456 D. 1-11 J. F. Durrell  
rec-9-4-75 } 30' off N. line of party  
of party of 1st part being  
20 ch. long

37-230 D. 1-9 Geo. O. Tiffany  
rec-6-24-75 } 30' of S. side of SE 1/4 Sec 28

38-453 D. 1-11 A. E. Rutney  
rec-9-4-75 } 30' off N. line of party of  
1st part being 15 ch long

T.2S.R.13N.  
T.3S.R.13W.

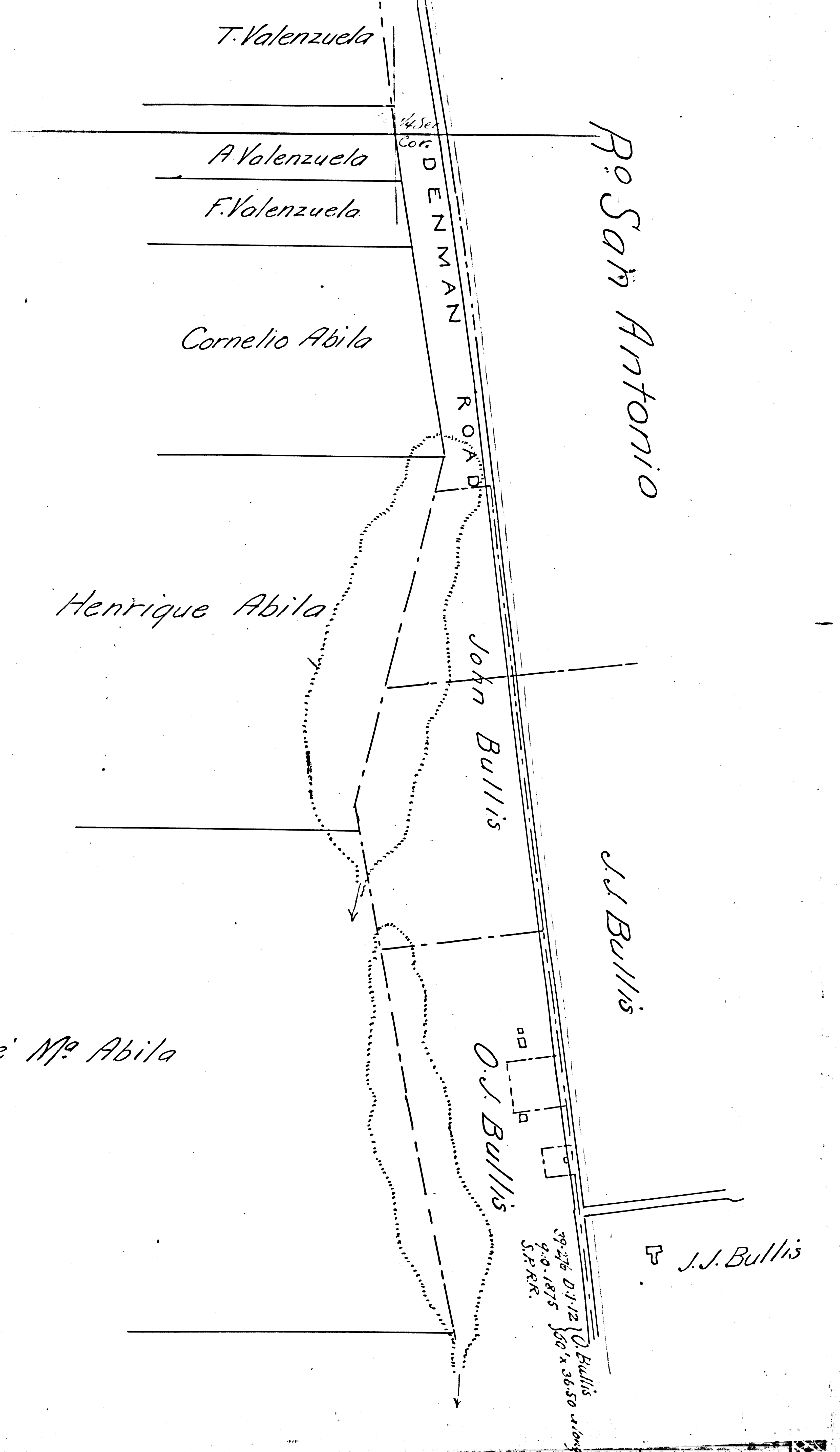
MANCHESTER AVE + ALAMEDA ST.  
~~Denman & Green Meadow No 5~~  
Scale 10 ch = 1 in

See CS6806

Road Book 6-7  
sh. 7  
26

F.M. 16708  
A2 OF A2

1000



FILED MAP NO. 16708

FILED MAP NO. 16708