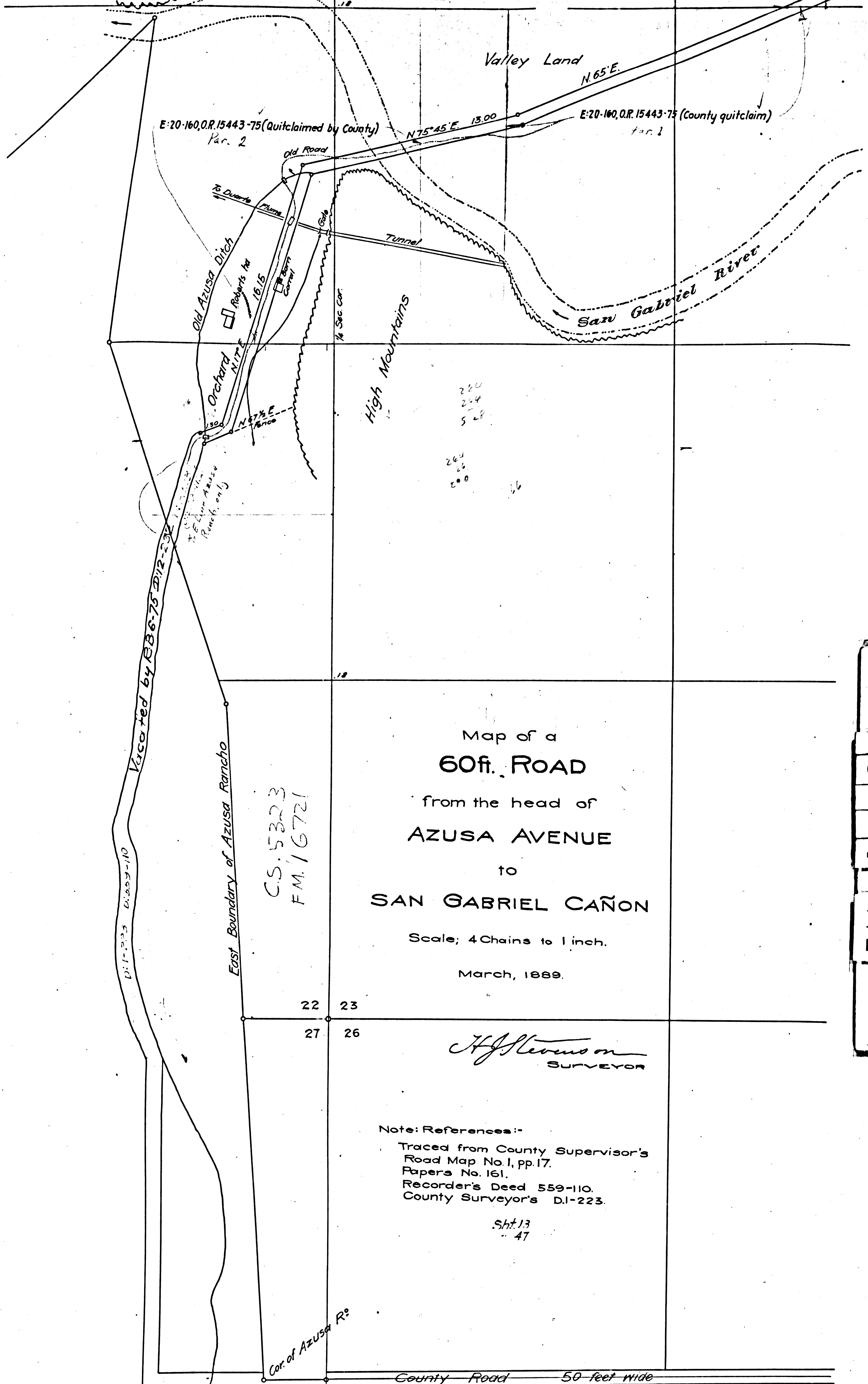


FILED MAP NO. 1651

FILED MAP NO. 1651

Vacated - D-46-227 O.R. 11754-376



Map of a
60 ft. ROAD
 from the head of
AZUSA AVENUE
 to
SAN GABRIEL CAÑON

Scale: 4 Chains to 1 inch.
 March, 1889.

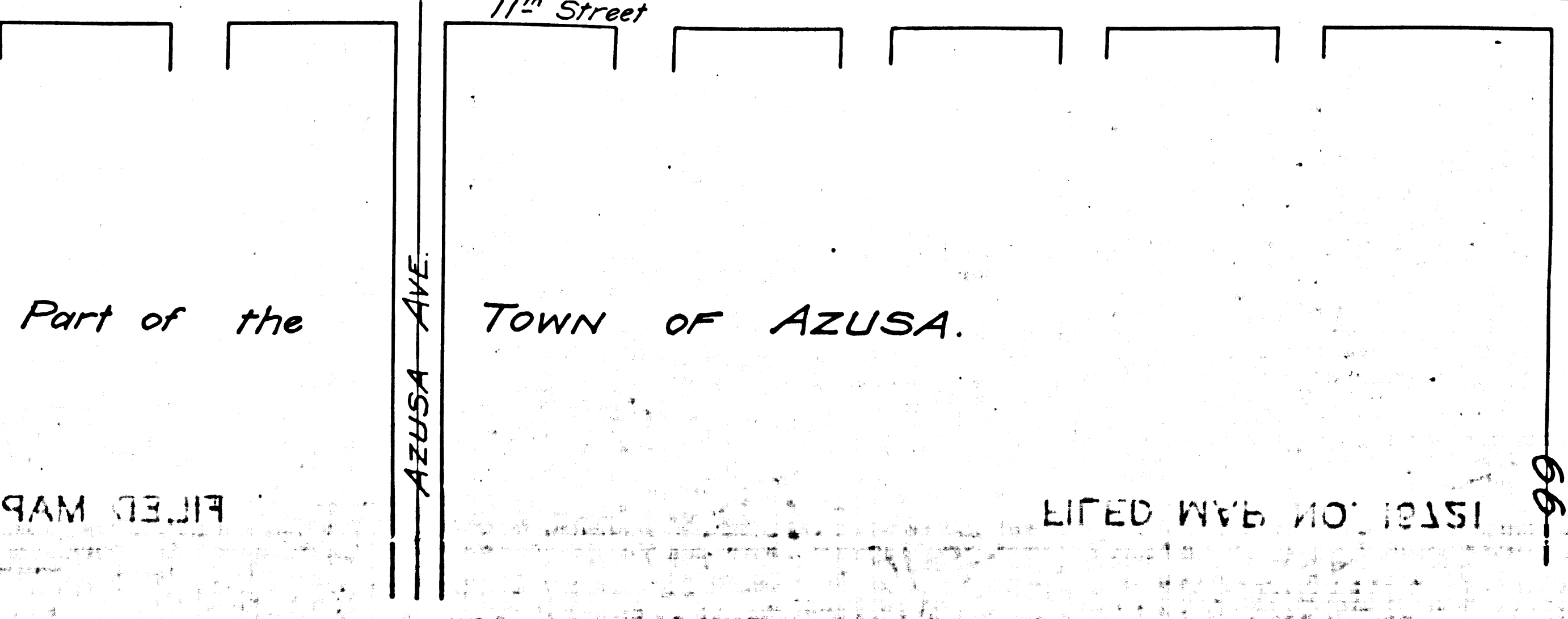
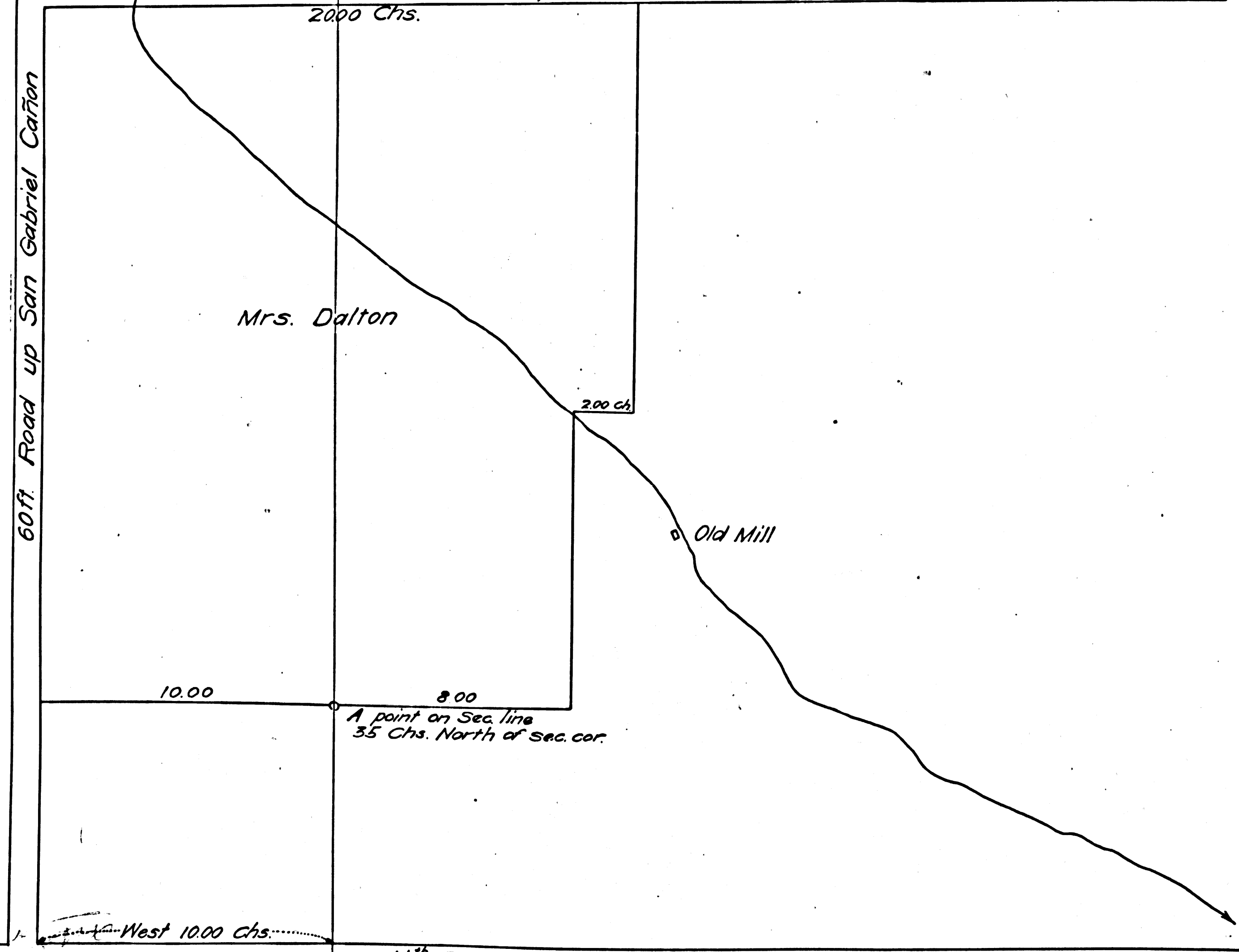
H. J. Stearns
 SURVEYOR

Note: References:-
 Traced from County Supervisor's
 Road Map No 1, pp 17,
 Papers No. 161,
 Recorder's Deed 559-110,
 County Surveyor's D.I-223.

Sheet
 47

C.S. 5323
 F.M. 16721

F.M. 16721



FILED MAP NO. 1651

FILED MAP NO. 1651