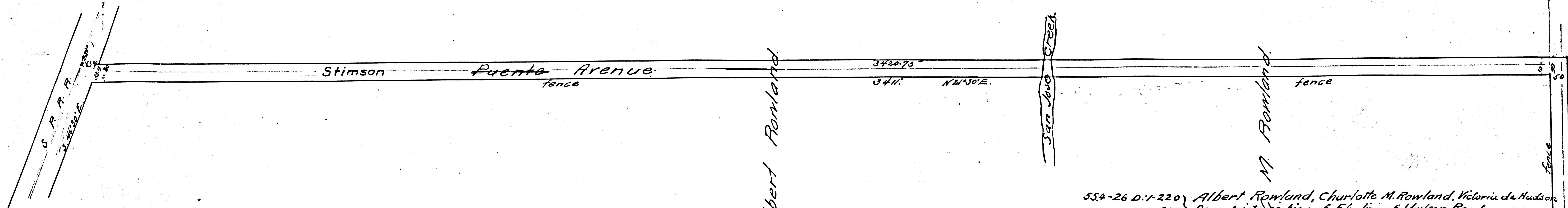


Town of La Puente
FILED MAP NO. 10155

FILED MAP NO. 10155



554-26 D: 1-220 } Albert Rowland, Charlotte M. Rowland, Victoria de Hudson
 rec-3-8-89 } Beg at intersection of Ely. line of Hudson Road.
 with Nly. line of 30' road shown on Map Dued 108-587 Th. S 69°45'E.
 251' Th. N 21°30'E 3411' Th. Sly. of S.P.R.R. Th. S 64°30'E 53.90'
 Th. S 21°30'E 342075' Th. N 63°45'W 2261' Th. N 19°45'E 50' to
 pt. in W. line of Hudson Road, Th. S 69°45'E 40' to beg.

Rowland & Puente Avenues.
 Filed March 8, 1889.
 Road Book 1-2.
 1M38

F.M. 16722

Mrs. Y. O.E.

Hudson Road
N 19°45'E

FILED MAP NO. 10155

Mrs. C.M. Rowland.

FILED MAP NO. 10155