

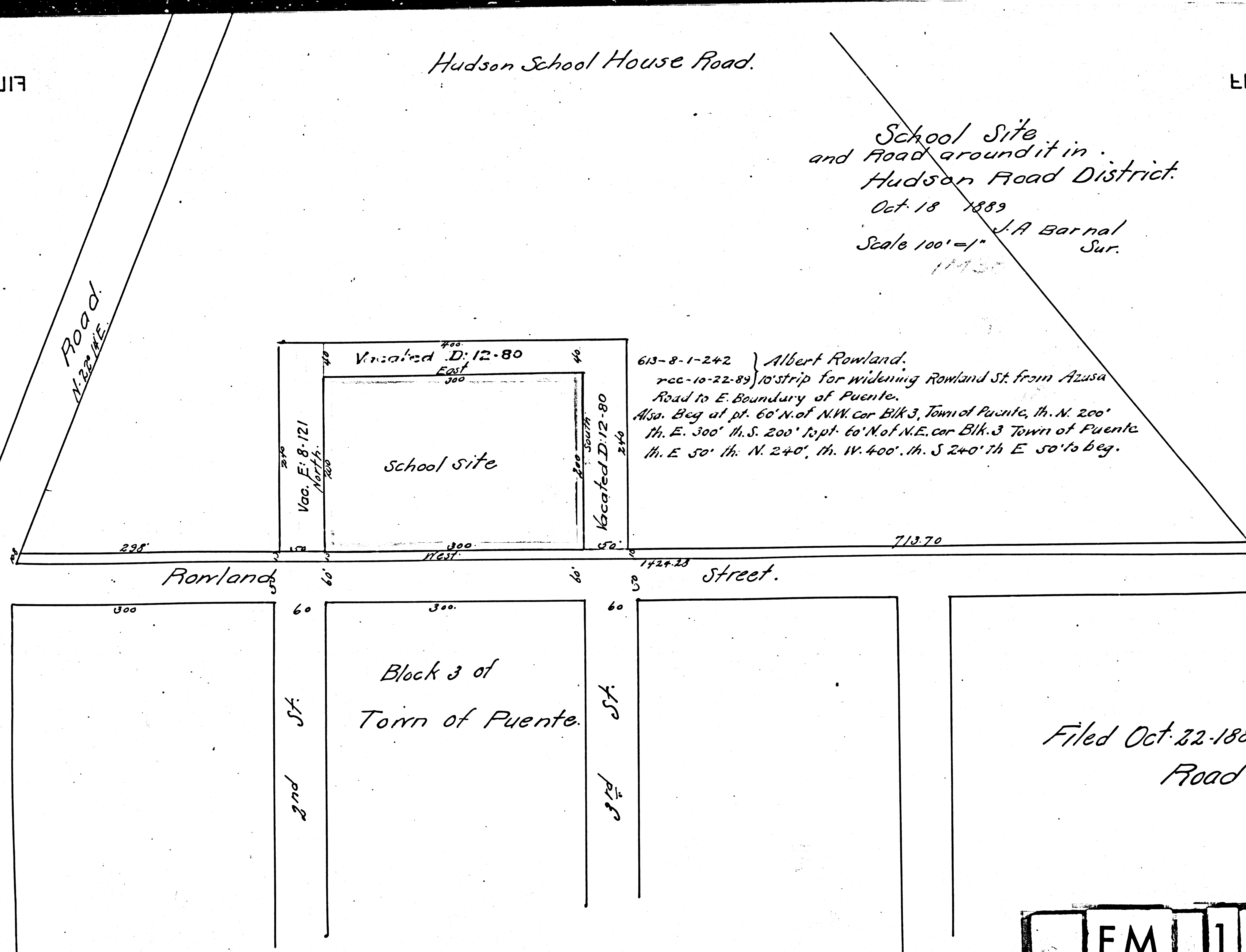
FILED MAP NO. 16745

FILED MAP NO. 16745

Hudson School House Road.

School Site
and Road around it in
Hudson Road District.

Oct 18 1889
Scale 100' = 1" J.A. Barnal
Sur.



613-8-1-242 } Albert Rowland.
 rec-10-22-89 } 10' strip for widening Rowland St. from Azusa
 Road to E. Boundary of Puente.
 Also. Beg at pt. 60' N. of N.W. cor Blk 3, Town of Puente, th. N. 200'
 th. E. 300' th. S. 200' to pt. 60' N. of N.E. cor Blk. 3 Town of Puente
 th. E. 50' th. N. 240' th. W. 400' th. S 240' th E 50' to beg.

Filed Oct 22-1889
Road Book 1-27

F.M. 16745

FILED MAP NO. 16745