

FILED MAP NO. 10429

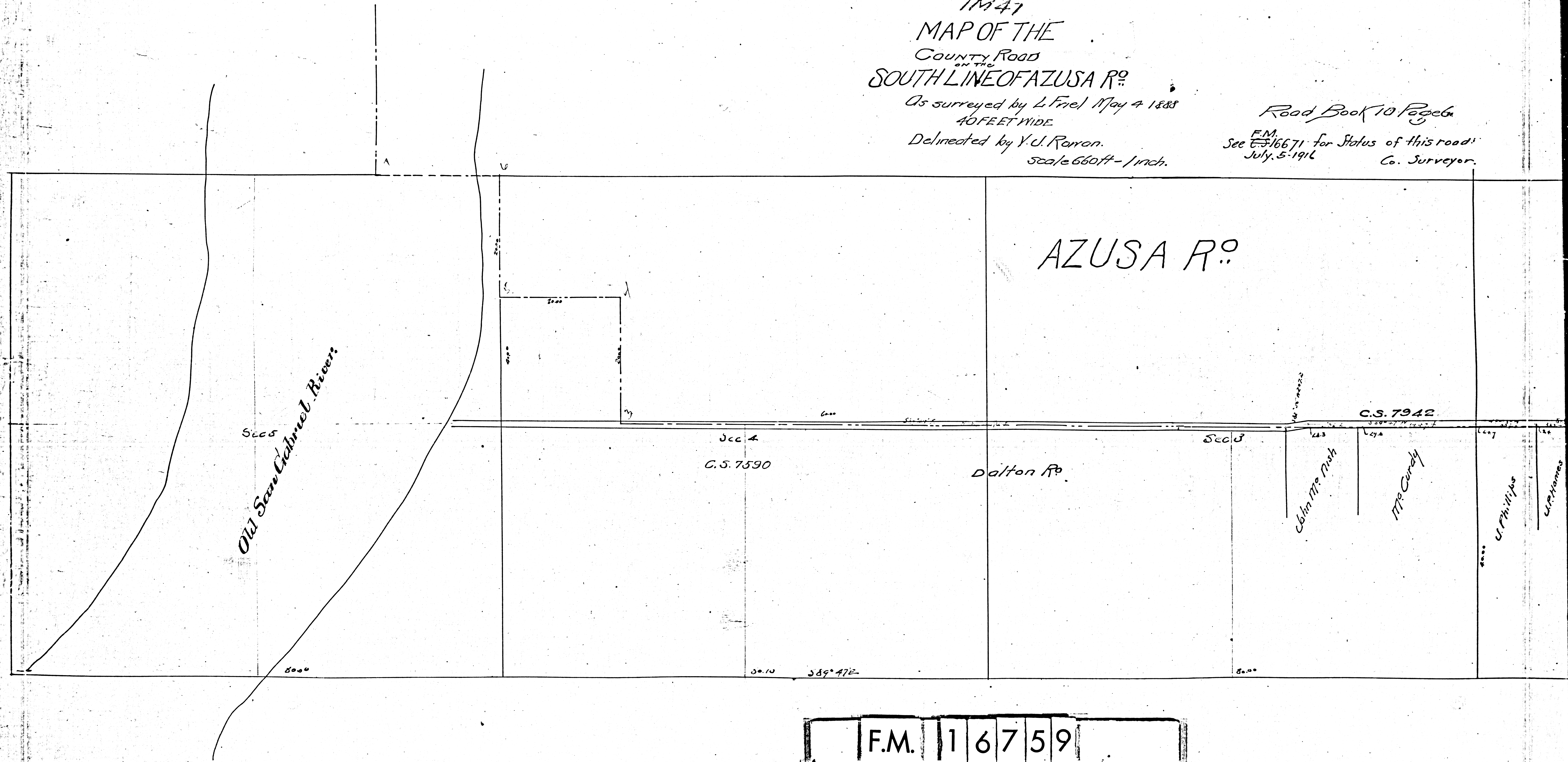
FILED MAP NO. 10429

DALTON ROAD
 1M47
 MAP OF THE
 COUNTY ROAD
 ON THE
 SOUTH LINE OF AZUSA R^o

As surveyed by L. Friel May 4 1888
 40 FEET WIDE
 Delineated by V. C. Rowan.
 Scale 660ft - 1 inch.

Road Book 10 Page 6
 F.M.
 See 16671 for Status of this road
 July 5-1916
 Co. Surveyor.

AZUSA R^o



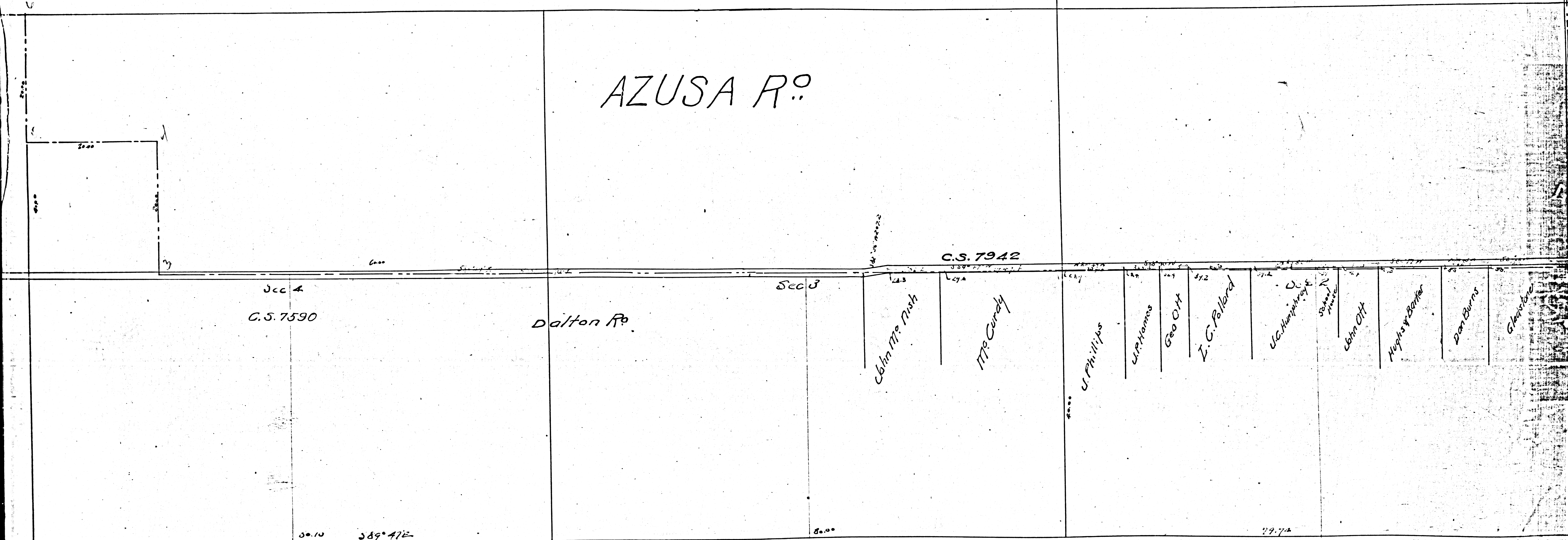
F.M.	1	6	7	5	9
A	1	OF	A	2	

DALTON ROAD
1M47
MAP OF THE
COUNTY ROAD
ON THE
SOUTH LINE OF AZUSA R^o

As surveyed by L. Friel May 4 1888
40 FEET WIDE
Delineated by V. J. Perron.
Scale 660ft - 1 inch.

Road Book 10 Page 6
F.M.
See 16671 for Status of this road
July 5-1916
Co. Surveyor.

AZUSA R^o



T. 1 S. R. 10 W

F.M. 16759
A2 OF A2