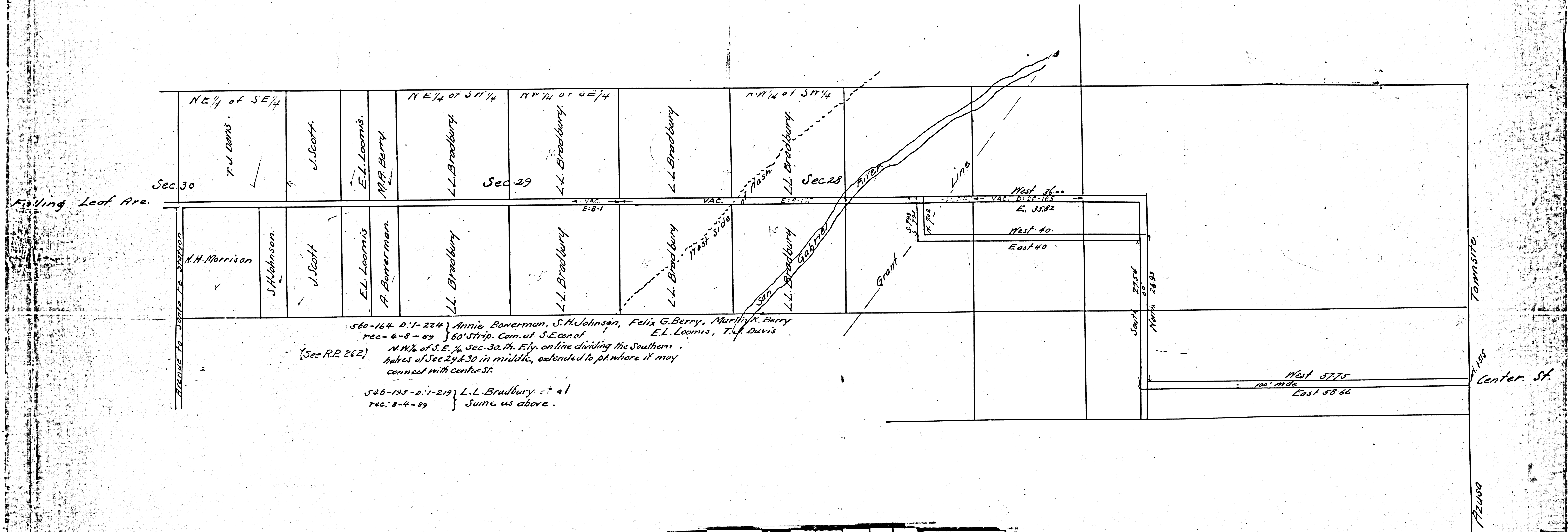


Extension of Falling Leaf Avenue.
Scale 10ch = 1in. May 1888 by J.S. Mc Donald C.E.
117 46-47

Road Book 1-21

117 137



560-164 D.1-224 } Annie Bowerman, S.H. Johnson, Felix G. Berry, Murph. R. Berry
 rec. 4-8-89 } 60' Strip. Com. at S.E. cor. of E.L. Loomis, T.J. Davis
 (See R.R. 262) N.W. 1/4 of S.E. 1/4 Sec. 30, Th. Ely, on line dividing the Southern
 halves of Sec. 29 & 30 in middle, extended to pt. where it may
 connect with center St.
 546-195 D.1-219 } L.L. Bradbury et al
 rec. 8-4-89 } Same as above.

F.M. 16760