

60' Wide

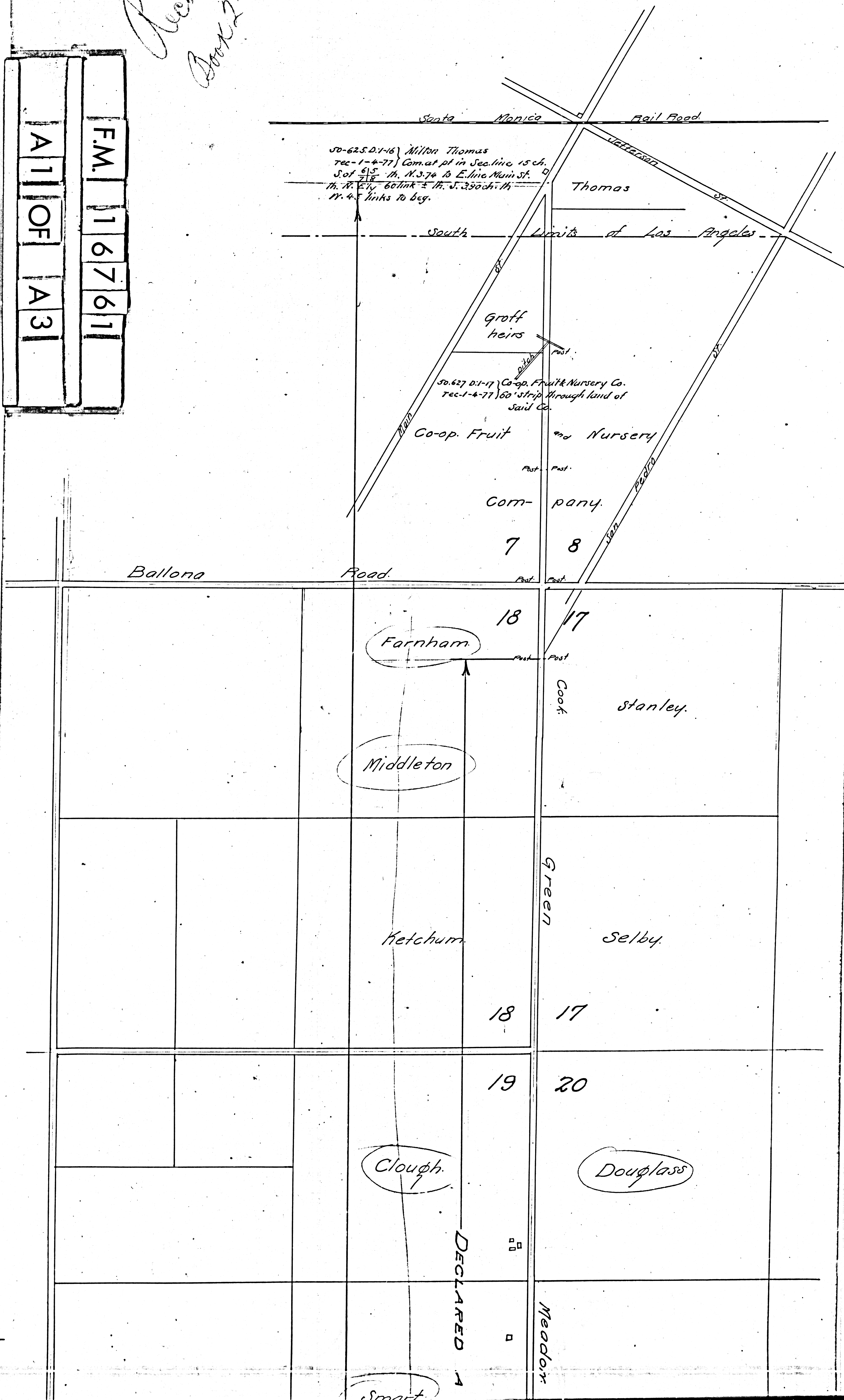
Record of Survey  
Book 2 - 60-16 + 162

Filed Nov. 16. 1876

Road Book. 6-4.586.

1M7.  
1M26

F.M. 16761  
A 1 OF A 3



50-62.5 D. 1-16 } Milton Thomas  
rec-1-4-77 } Com. at pt in Sec. line 15 ch.  
S of 7/8 Th. N. 3.74 to E. line Main St. of  
Th. N. E. 1/4 60 link ± Th. S. 350 ch. Th.  
N. 4.5 links to beg.

South Limits of Los Angeles

Grott heirs

50.627 D. 1-17 } Co-op. Fruit & Nursery Co.  
rec-1-4-77 } 60' strip through land of  
said Co.

Co-op. Fruit and Nursery

Company

7

8

Ballona Road

18

17

Farnham

Cook

Stanley

Middleton

Green

Selby

Hetchum

18

17

19

20

Clough

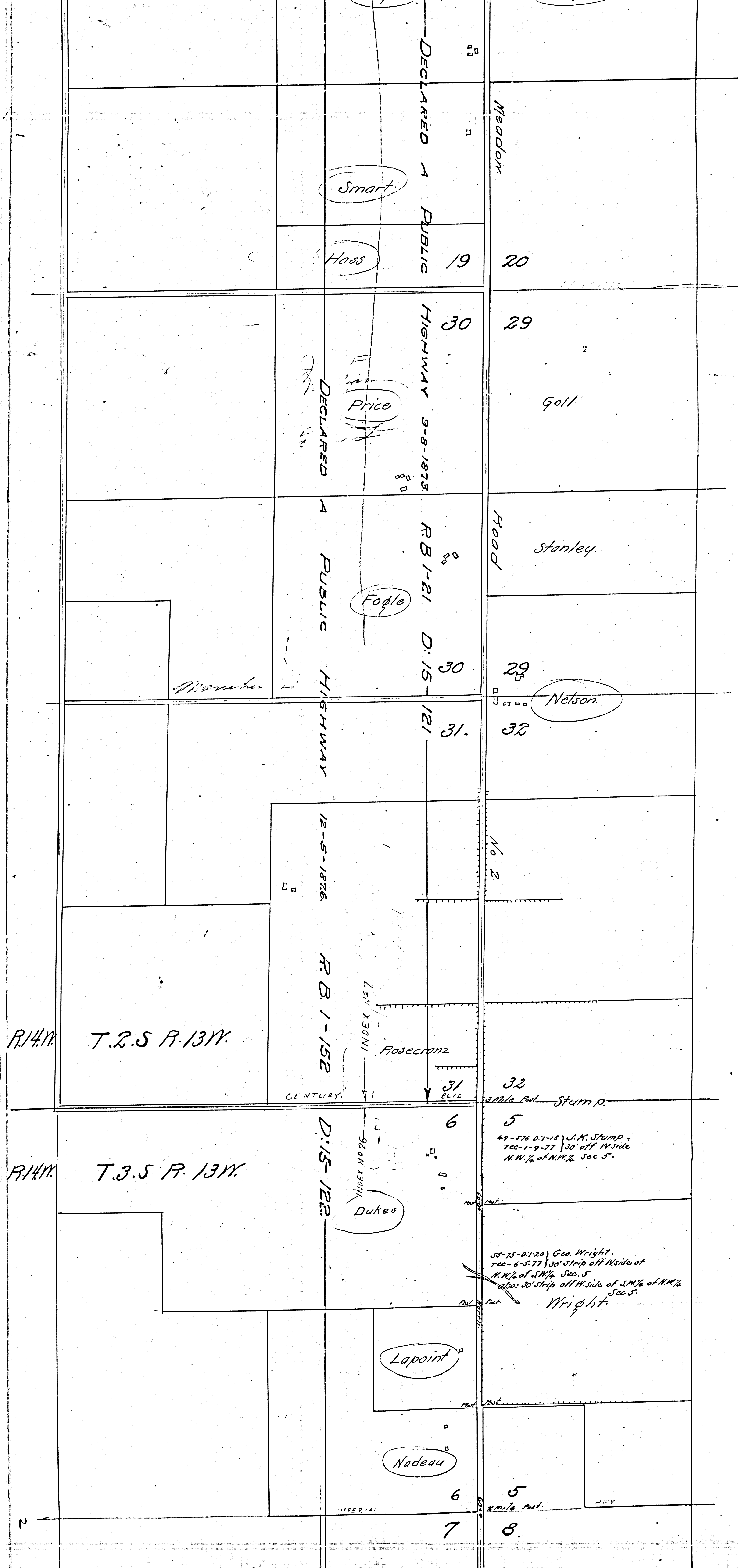
Douglass

DECLARED 4

Meador

Smart

F.M.		1	6	7	6	1
A 2		OF		A 3		



2

R. 14 N.

T. 2. S. R. 13 W.

R. B. 1-152

INDEX NO 27

Rosecranz

CENTURY

31  
BLVD

32

2 Mile Post Stump

R. 14 N.

T. 3. S. R. 13 W.

D. 15 122

INDEX NO 26

Dukes

6

5

49-576 D. 1-15 } J. K. Stump -  
rec-1-9-77 } 30' off W. side  
N.W. 1/4 of N.W. 1/4 Sec 5.

55-75-01-20 } Geo. Wright.  
rec-6-5-77 } 30' Strip off N. side of  
N.W. 1/4 of S.W. 1/4 Sec. 5  
also: 30' Strip off W. side of S.W. 1/4 of N.W. 1/4  
Sec 5.  
Wright

Lapoint

Nadeau

6

5

2 Mile Post

2

IMPERIAL

7

8

ROSECRANZ

7

8

1 Mile Post

18

17

18

17

19

20

North line  
San Pedro Ro.

F.M.		1	6	7	6	1
A	3	OF	A	3		