

F.M. 16778-2
 A1 OF A2

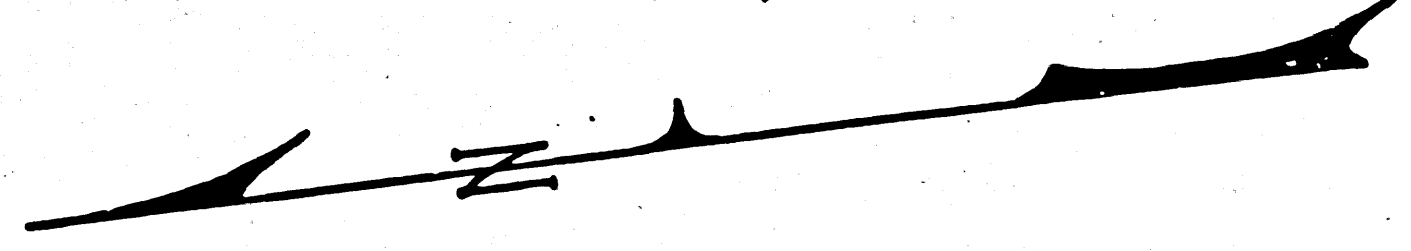
SAN DIMAS CANYON ROAD

—AND A PORTION OF THE—
 WHEELER AND LA VERNE ROAD

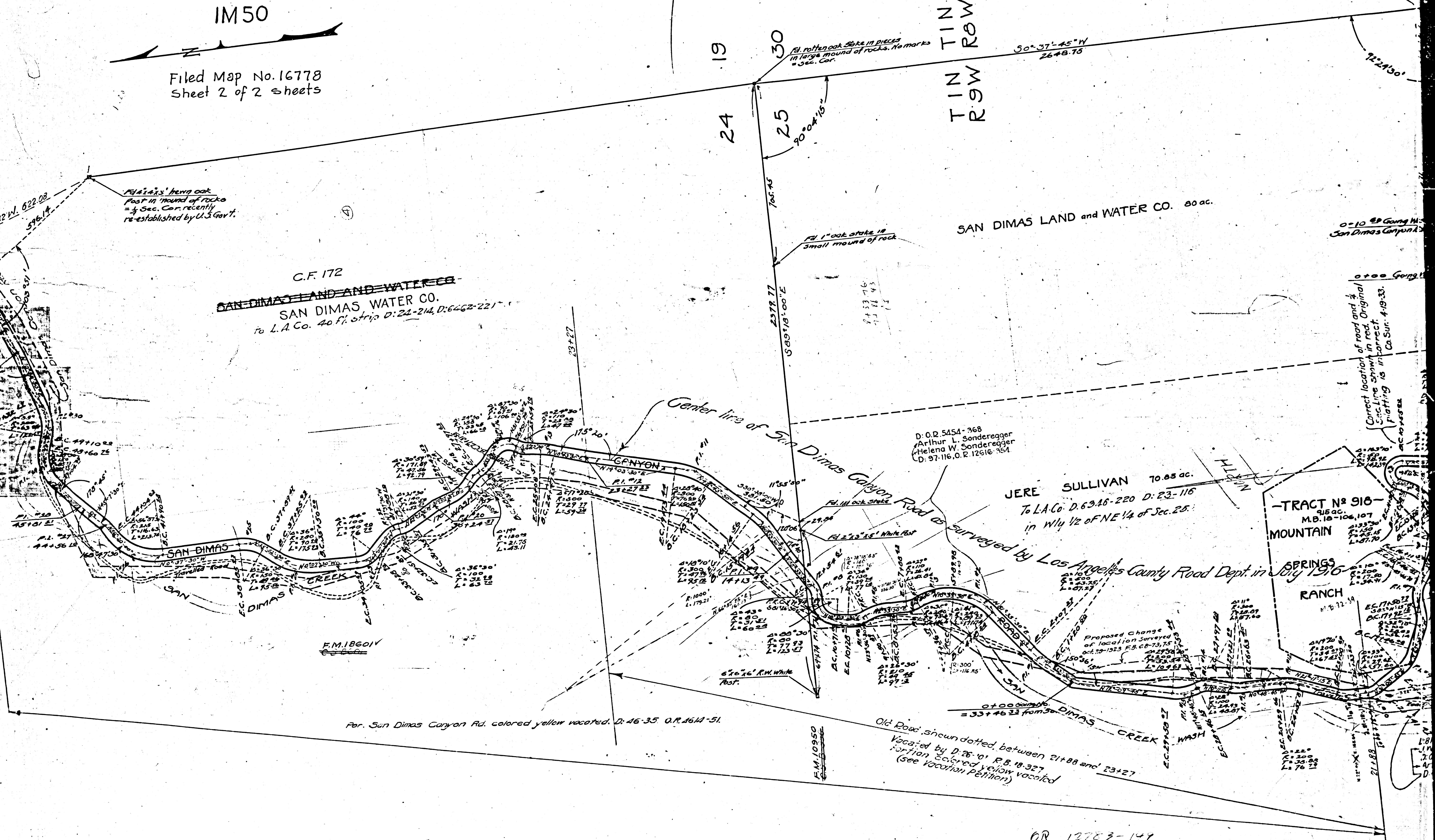
J.H. Skeggs - Maint. Engr.
 July 13, 1916.

Z-131A F-1269
 SCALE-1 IN=200 FT.
 IM50

FIELD WORK - Hamilton - Fisher
 OFFICE WORK - Fisher
 CHECKED -



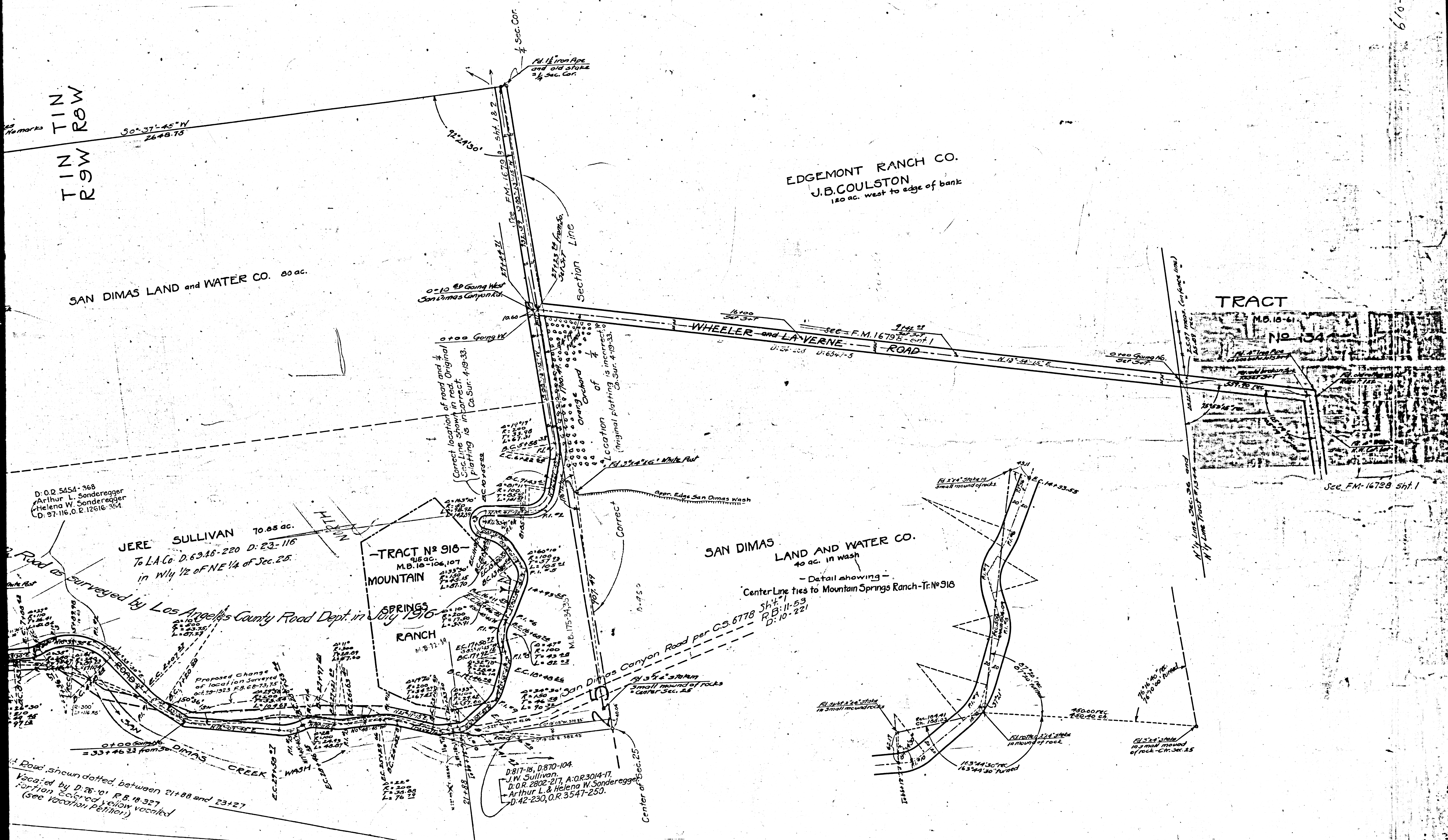
Filed Map No. 16778
 Sheet 2 of 2 sheets



OR 12783-147

F.M. 16778-2
A2 OF A2

610-25



D. O.R. 5454-368
Arthur L. Sonderegger
Helena W. Sonderegger
D. 57-116, O.R. 12616-354

JERE SULLIVAN 70.85 ac.
To L.A. Co. D. 63-18-220 D. 23-116
in Wly 1/2 of NE 1/4 of Sec. 25.

TRACT No 916
M.B. 10-106, 107
MOUNTAIN SPRINGS RANCH

SAN DIMAS LAND AND WATER CO.
40 ac. in wash
- Detail showing -
Center Line ties to Mountain Springs Ranch-Tr. No 916

Road shown dotted between 21+88 and 23+27
located by D. 26-101 R. B. 18-327
portion colored yellow vacated
(see vacation petition)

D. 817-18, D. 870-104
J. W. Sullivan
D. O.R. 2802-217, A. O.R. 3014-17
Arthur L. & Helena W. Sonderegger
D. 42-230, O.R. 3547-250

O.R. 12783-149

