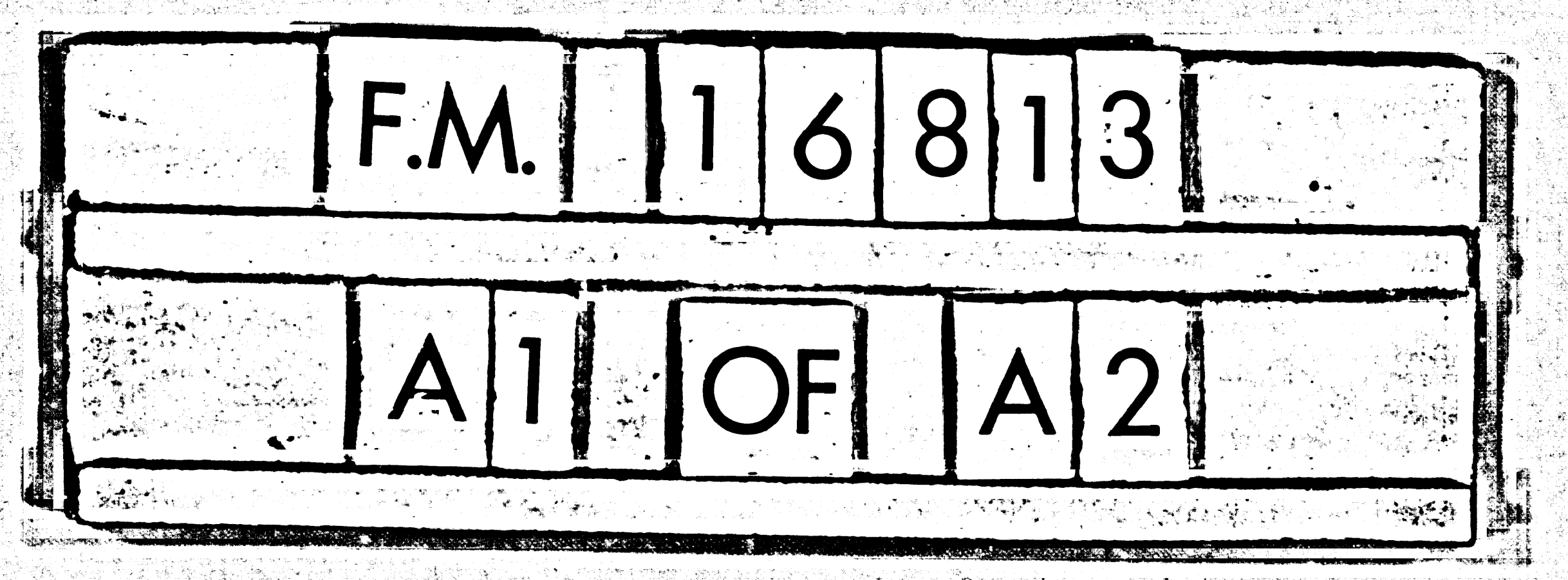
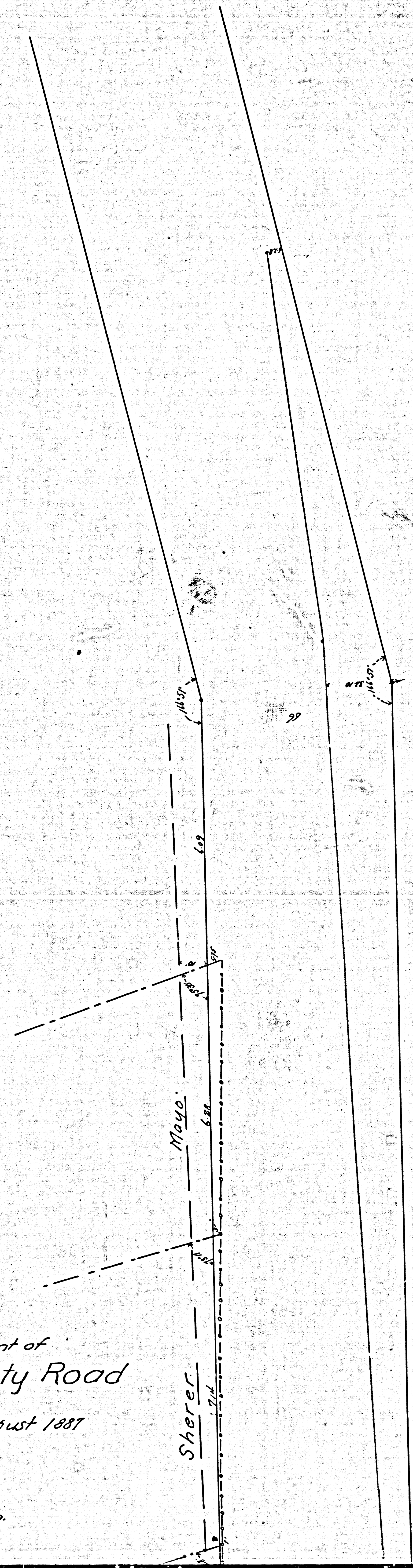


Showing the correct alignment of
 Verdugo Cañon County Road
 Map No 51 in the County.
 Resurveyed & Relocated in August 1887

by
 T. Whitten

Longitudinal Scale 2chs = 1 in.
 Transverse Scale 30' = 1"



Conventional Signs.
 Cypress Hedge = -o-o- Properly Divisions = - - - -
 East Boundary of Old Road = - - - - Alignment of
 West Boundary through Property of Mayo Sherer & Hallenback = - - - -
 From Notes on Map No 51 County Roads
 Located Lines of Road by Present Survey = = = =

Showing the correct alignment of
Verduño Cañon County Road
 Map No 51 in the County.
 Resurveyed & Relocated in August 1887

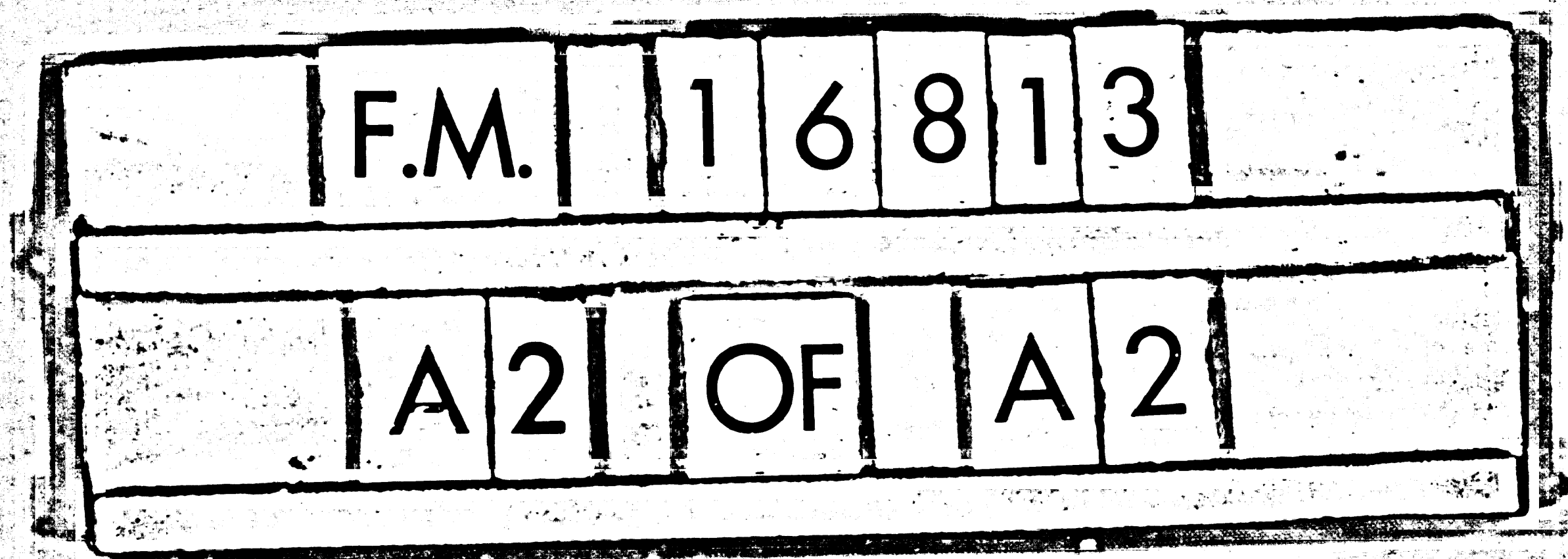
by
 T. Whitten
 Longitudinal Scale 2000' = 1 in.
 Transverse Scale 30' = 1"

Road Book 1-12.

Sherer

Hollenbeck

Conventional Signs.
 Cypress Hedge = ---
 East Boundary of Old Road = ---
 West Boundary through Property of Mayo Sherer & Hollenbeck
 from Notes on Map No. 51 County Roads
 Located Lines of Road by Present Survey = ===



FILED MAP NO. 16813

FILED MAP NO. 16813