

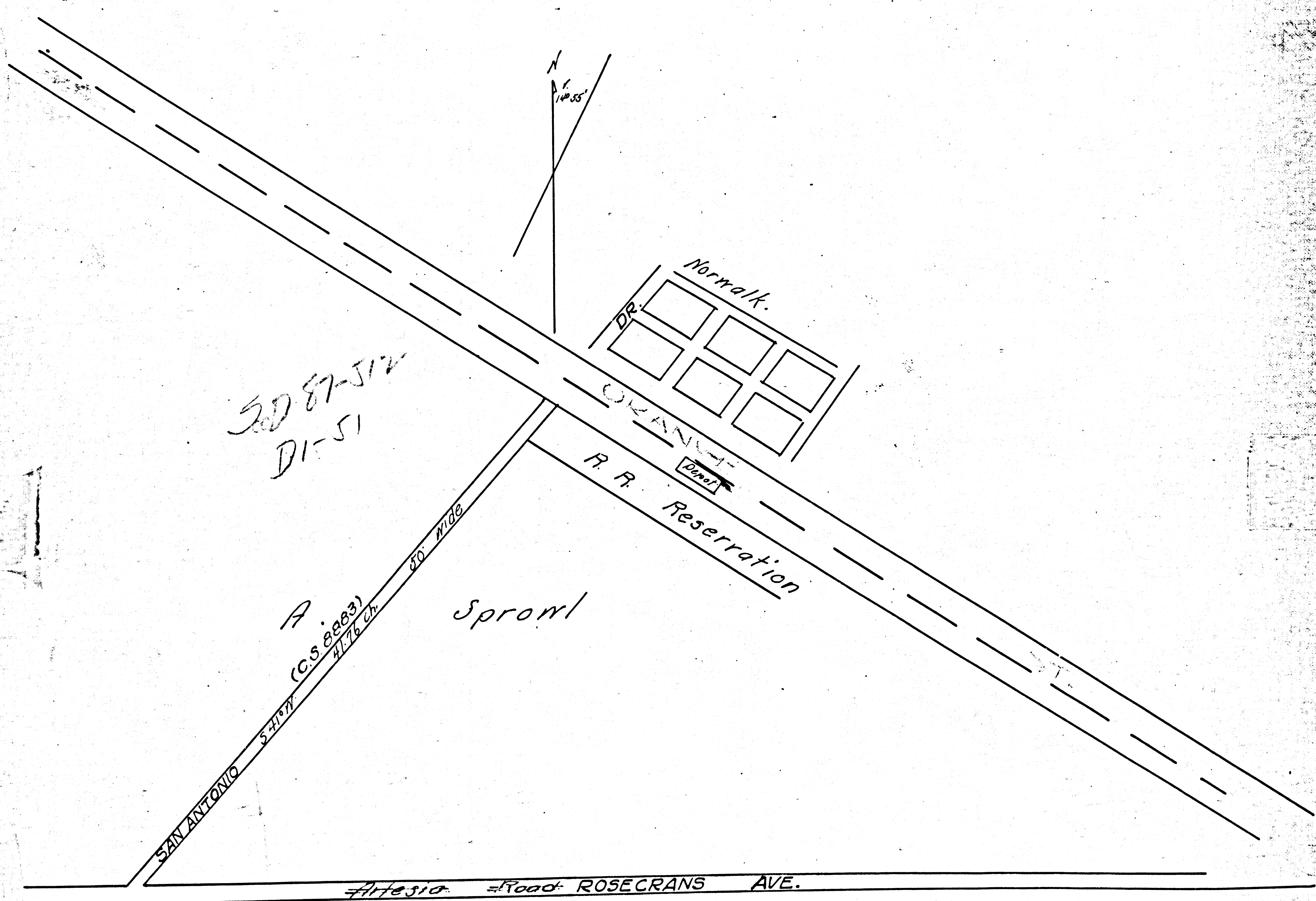
FILED MAP NO 1885

FILED MAP NO 1885

SAN ANTONIO RD.
Road From Norwalk to the Artesia Road

Conveyed by A. Sprong to Los Angeles County

1 M 30



Scale. 8 ch = 1 in.

Filed April 3 - 1882.

Road Book 2 - 10

F.M. 16824

FILED MAP NO 1885

FILED MAP NO 1885