

Road rierred in the vicinity of Sarannah.

1M44

May 2-1879

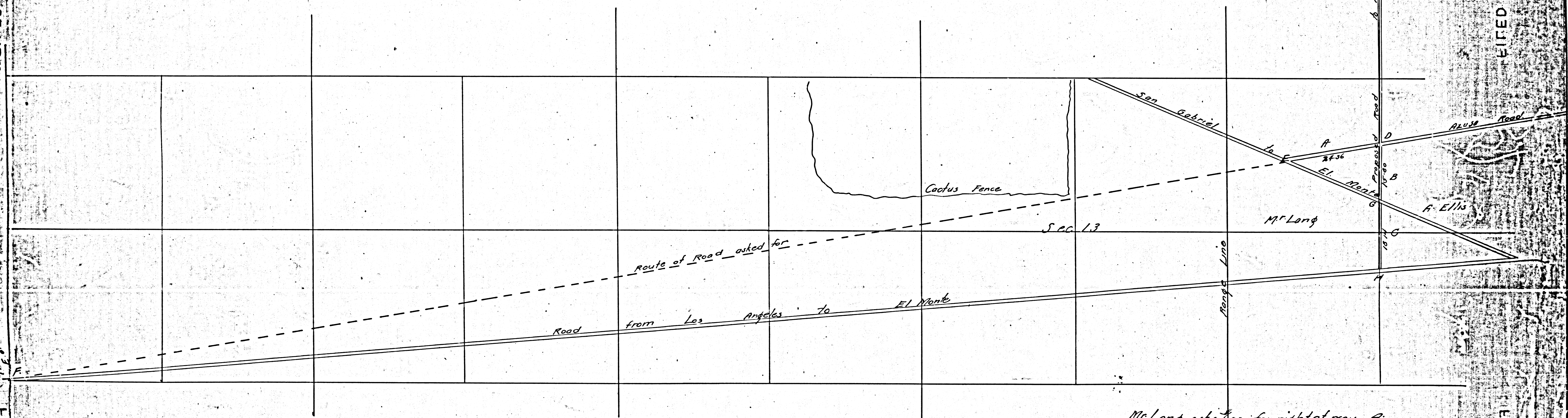
Road papers 41.

FILED MAP NO 16821

FILED MAP NO 16821

FILED MAP NO 16821

FILED MAP NO 16821



A has 2.21 Acres
 B . 1.43 .
 C . 1.65 .

Mr Long asks \$100 for right of way A
 . 100 B
 . 200 B & C.

Portion of Azusa Road vacated see D:12-A

F.M. 16851