

FILED MAP NO. 1882

Road Papers 82.

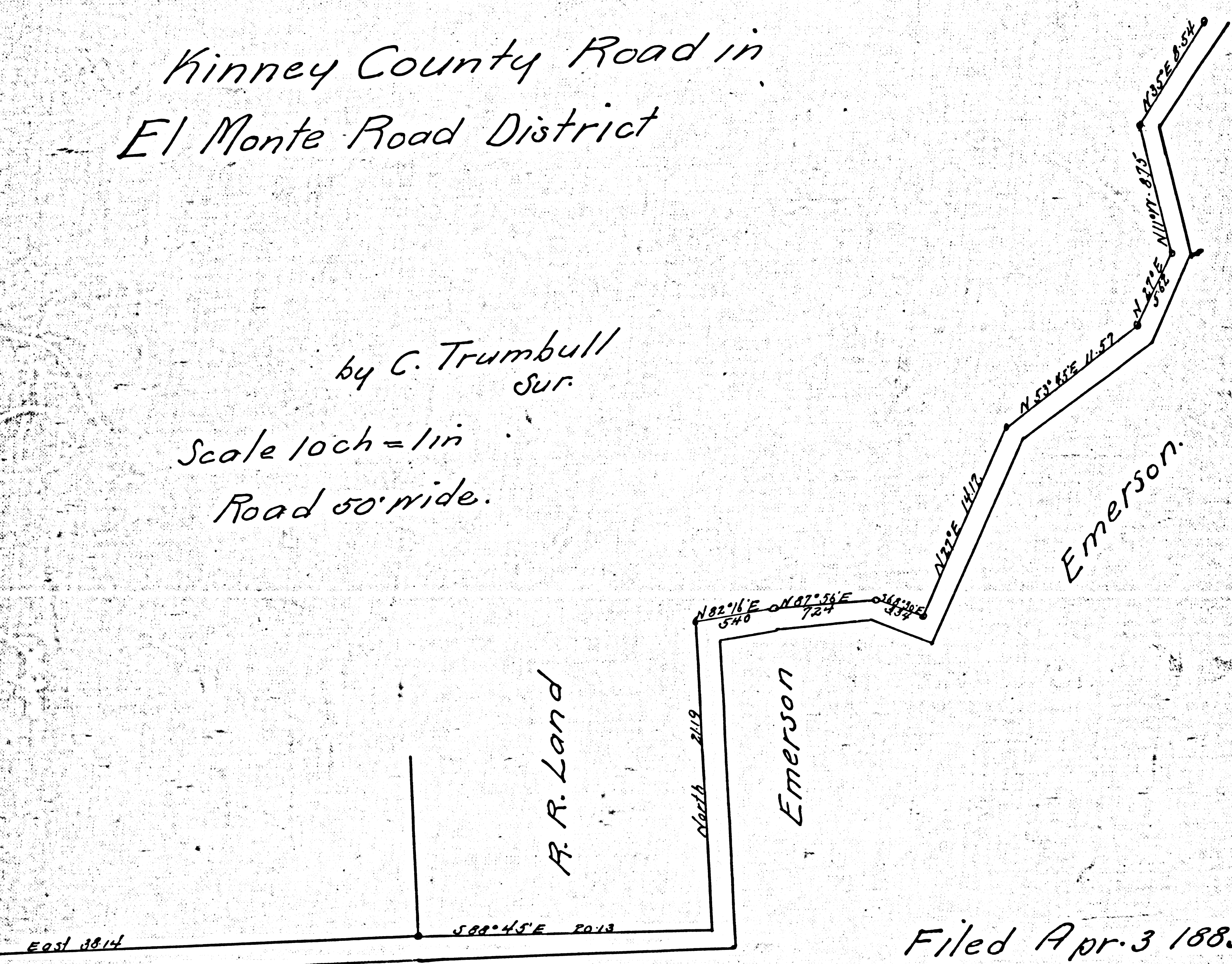
FILED

Kinney County Road in  
El Monte Road District

by C. Trumbull  
Sur.

Scale 10ch = 1in  
Road 50' wide.

FILED MAP NO. 1882



Filed Apr. 3 1883

E. J. Baldwin.

Por. Kinney Rd. vac. D:41-266 Q.R.5008-52

F.M. 16857

FILED MAP NO. 1882