

FILED MAP NO. 1683

FILED MAP NO. 1683

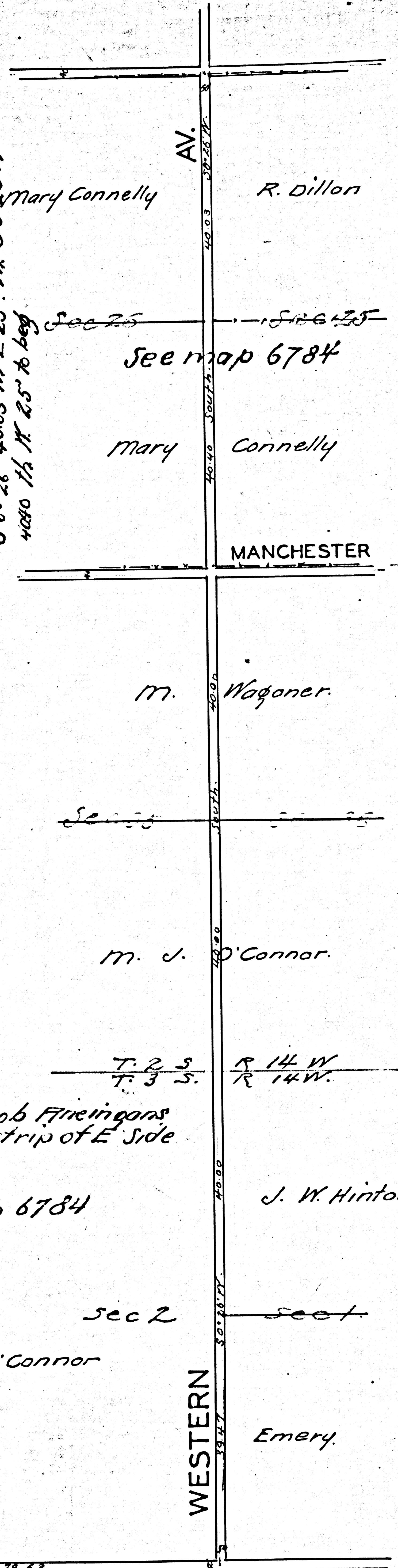
WESTERN AV.  
 Road No 301  
 as petitioned for by  
 J. W. Hinton et al Dec 25 1885  
 Surveyed June 1 1886  
 by  
 L. Frial  
 Scale 20ch for length  
 600' for width.

IM24

Road Papers 31.

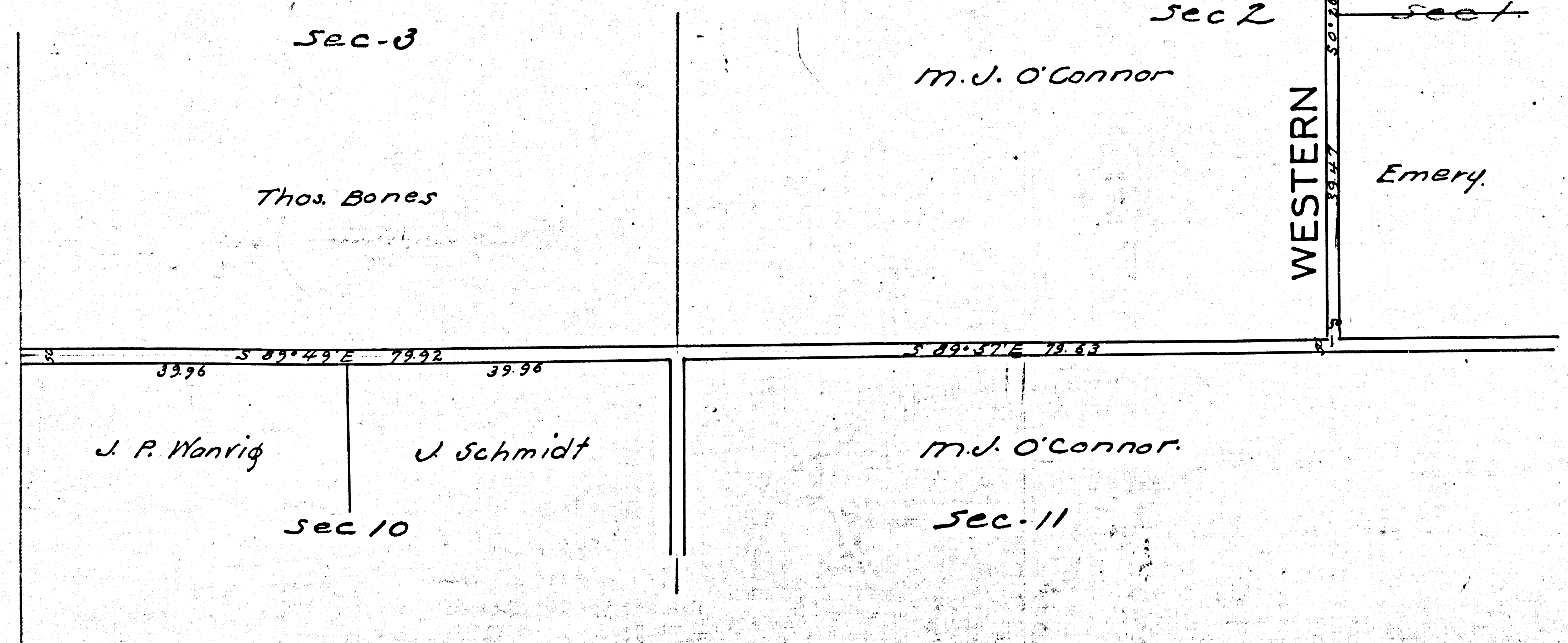
D: 27-190 R.B. 2-185  
 July 1, 1886 Declared public highway 50' wide.

1882 0-1-131 } Mary Connelly.  
 18-7-16-85 } Com. at pt 20' N. of 35' 1/2  
 1/4 W. 25' Th. No. 26' E 80-43 Th E 25' Th.  
 S 0-26' 40-03 Th E 25' Th. S 0-25' W  
 4080 Th N E 25' to beg



834-231 D: 2-457 Jacob Fireingans  
 rec-1-10-93 } 30' strip of E Side  
 of W.E 1/4 Sec 2.

See map 6784



No Sausal Redondo.

F.M. 16859

FILED MAP NO. 1683

FILED MAP NO. 1683