

FILED MAP NO. 18881

FILED MAP NO. 18884

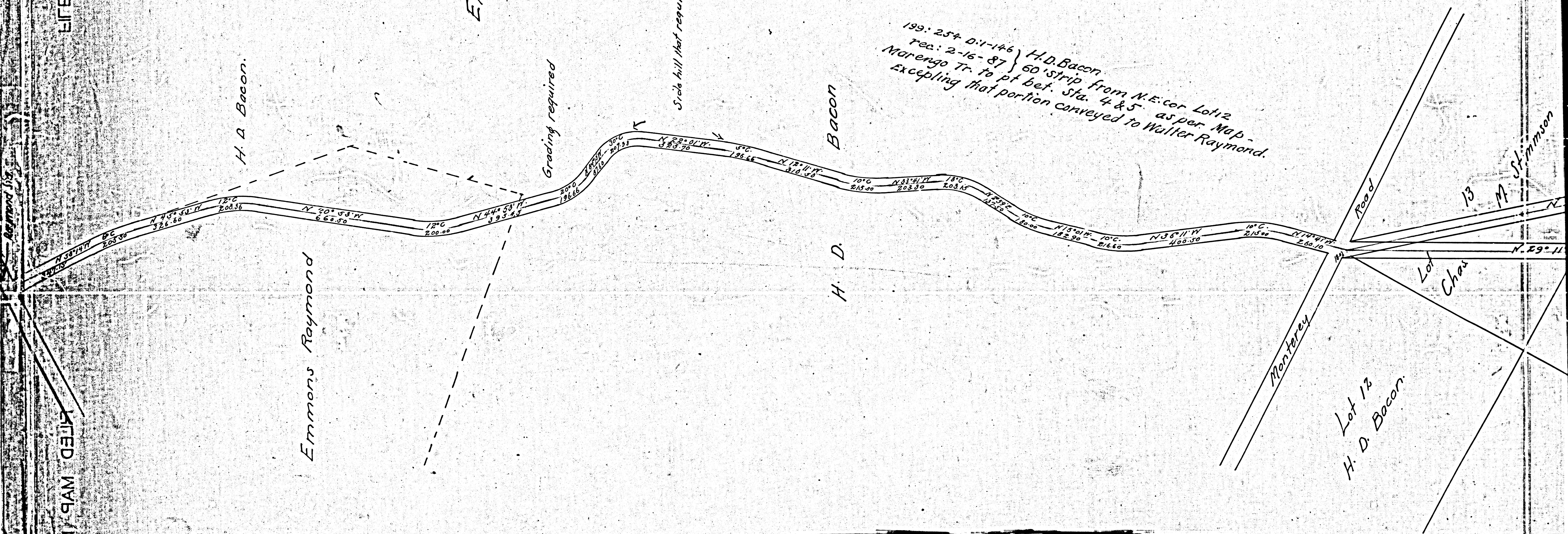
INDEX #8

Extension of Garfield Avenue  
Nov. 1886  
by L. Friel.

Scale 500' = 1"

Filed Nov. 3 1886  
Road Papers 249

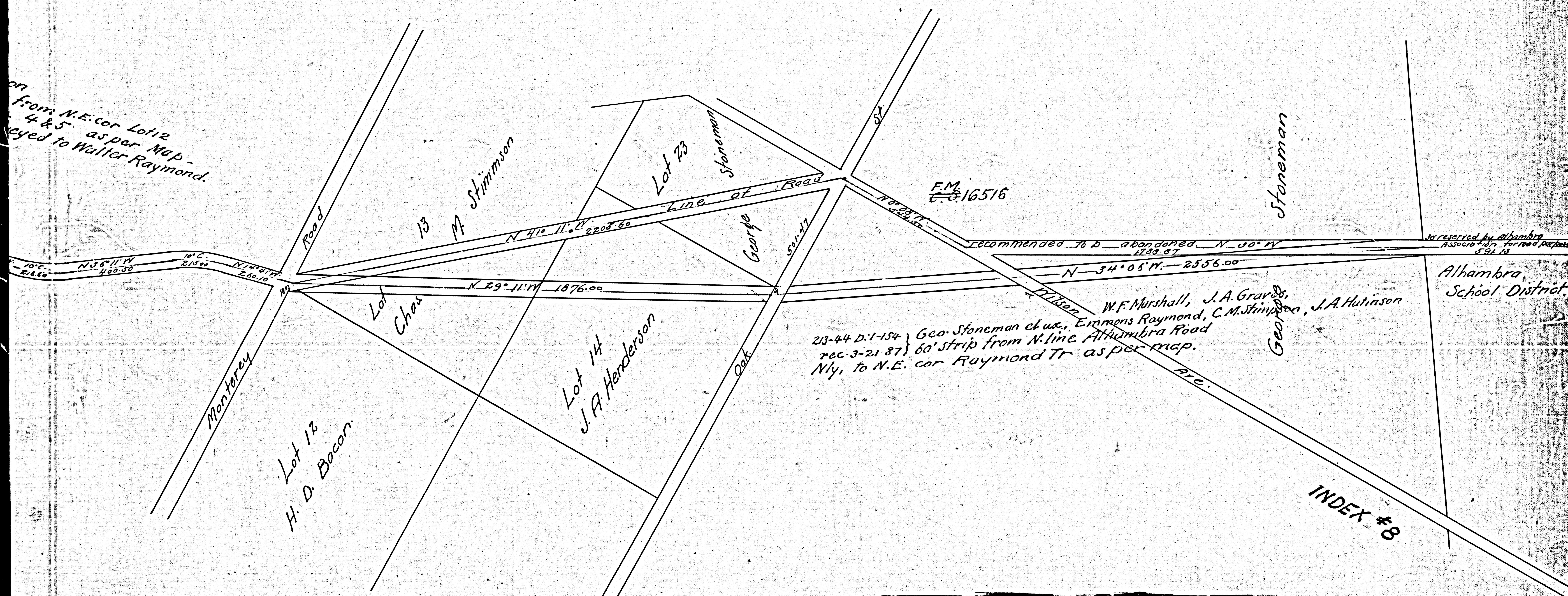
189: 254 D. 1-146 } H. D. Bacon  
rec: 2-16-87 } 60' strip from N.E. cor Lot 12  
Marengo Tr. to pt bet. sta. 4 & 5 as per Map -  
excepting that portion conveyed to Walter Raymond.



F.M.	1	6	8	9	4
A	1	OF	A	2	



on from N.E. cor Lot 12  
4 & 5 as per Map  
deeded to Walter Raymond.



23-44 D:1-154 } Geo. Stoneman et al., Emmons Raymond, C.M. Stimson, J.A. Hutinson  
 rec-3-21-87 } 60' strip from N. line Alhambra Road  
 N.Y. to N.E. cor Raymond Tr as per map.

F.M. 16516

F.M.	1	6	8	9	4
A	2	OF	A	2	

INDEX #8

FILED MAP NO. 16894

FILED MAP NO. 16894

Alhambra School District

reserved by Alhambra Assoc'n for road purposes

Recommended to be abandoned N 30° W 1789.87

N 34° 05' W 2556.00

ARC.

George

Stoneman

Stoneman

George

Oak

Lot 17  
H. D. Bacon.

Lot  
Chas

Lot 13  
M. Stimson

Lot 14  
J. F. Henderson

Lot 23

Line of Road

Road

Monterey

Garfield

Alhambra

Road