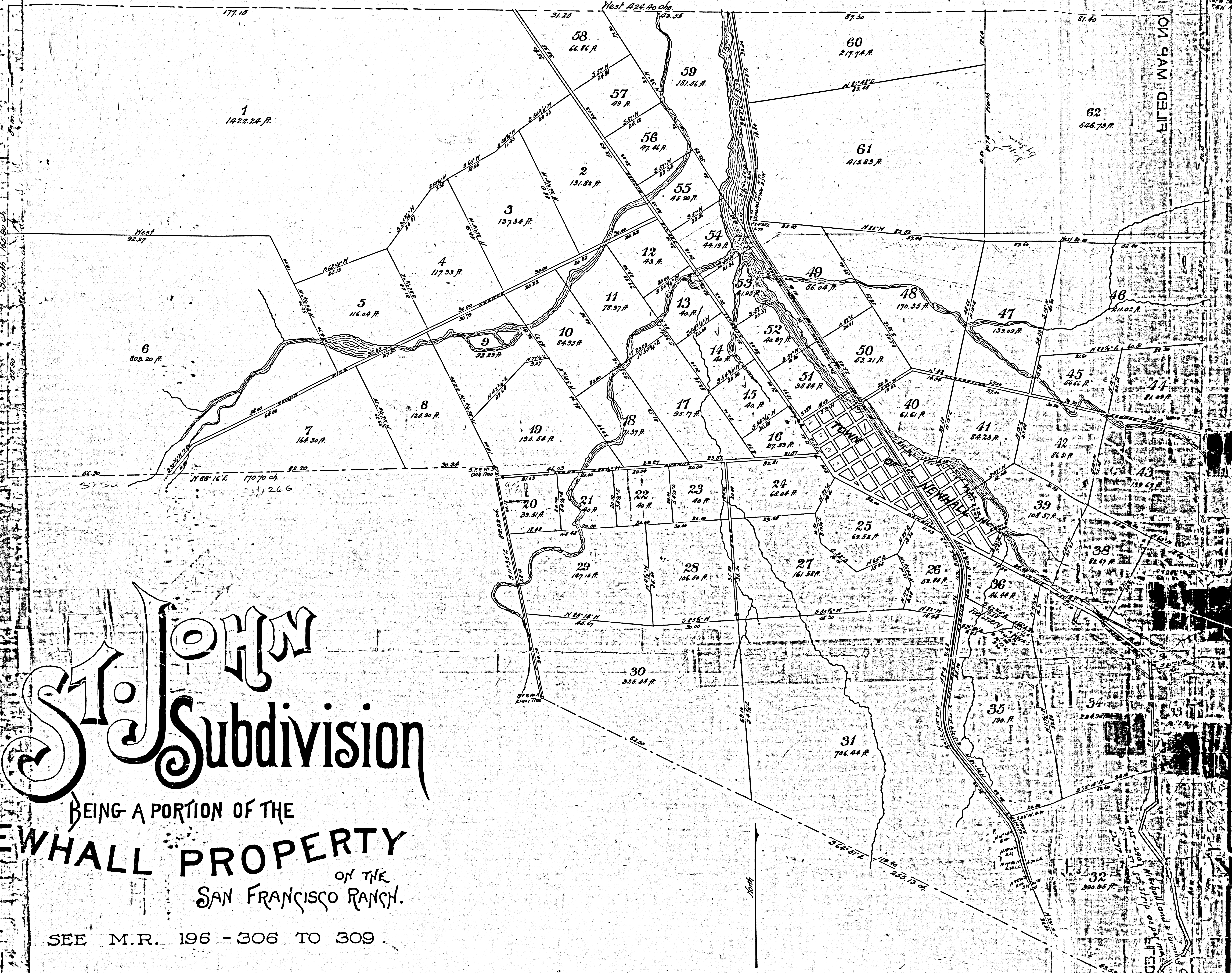


FILED MAP NO. 18534

FILED MAP NO. 18534



St. John Subdivision

BEING A PORTION OF THE
NEWHALL PROPERTY
 ON THE
 SAN FRANCISCO RANCH.

SEE M.R. 196 - 306 TO 309

Scale 20 Chains to 1 Inch.

Vac per Newhall file D:12-81
 " " " " D:12-122 - 1/4 in. 1860
 " " " " San Francisco Road D:12-125 - 1/4 in. 1860
 " " " " D:25-6 M.R. 253-207

Red lines indicate Road decided by
 Newhall Land & Water Co.

F.M. 16924

Filed April 7, 1890
 Road Book 10, Page 20.

FILED MAP NO.

FILED MAP NO. 18534