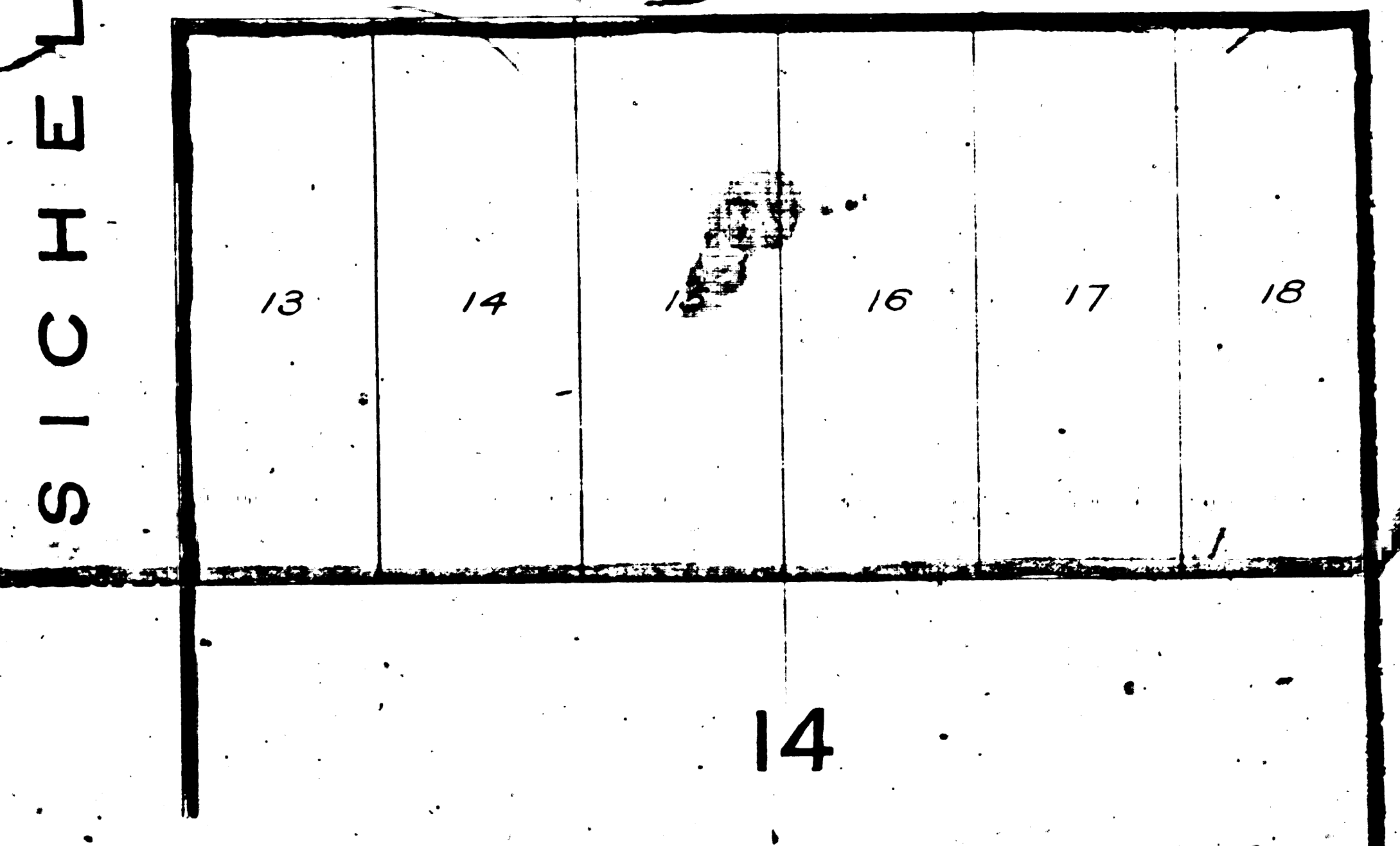
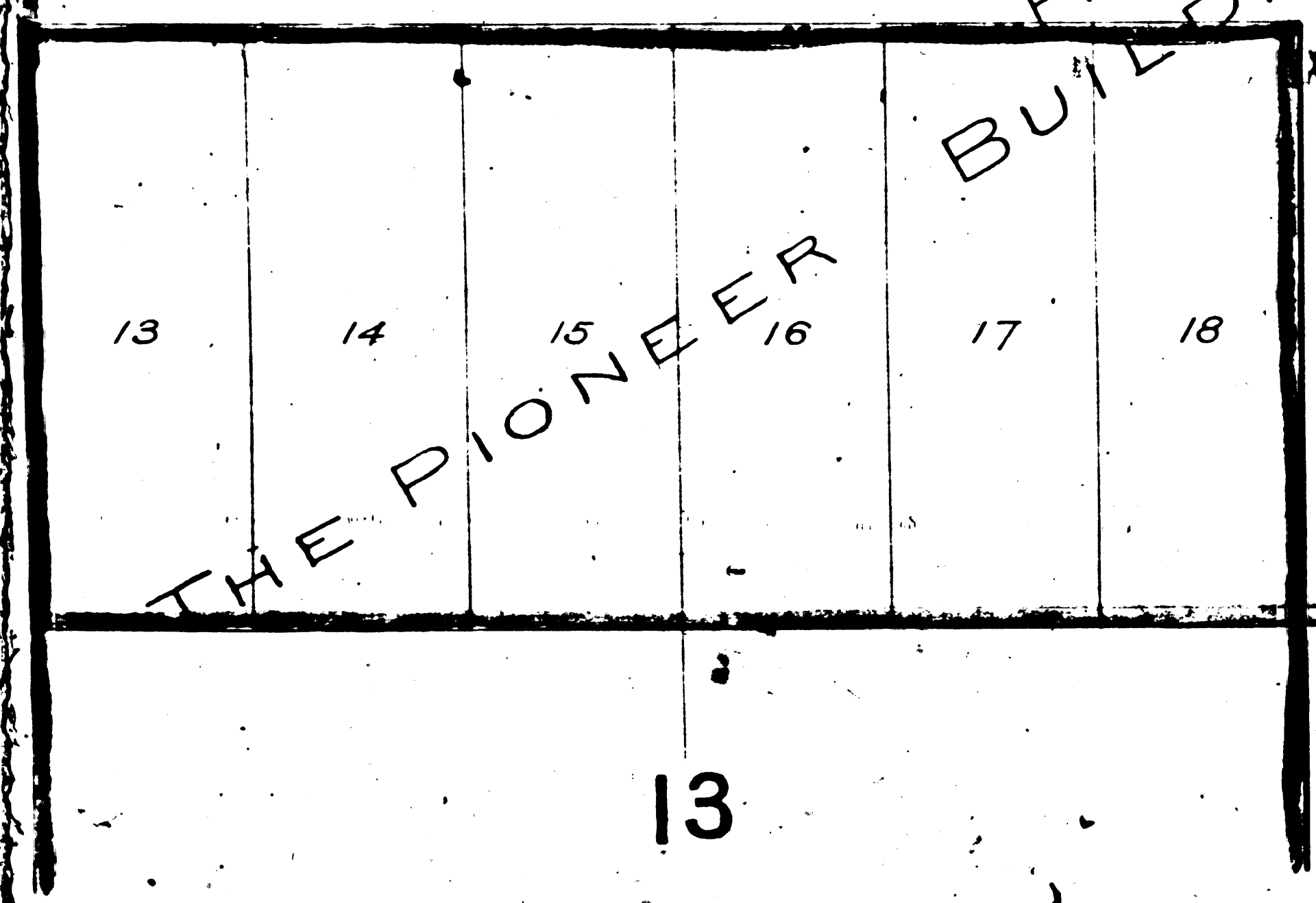
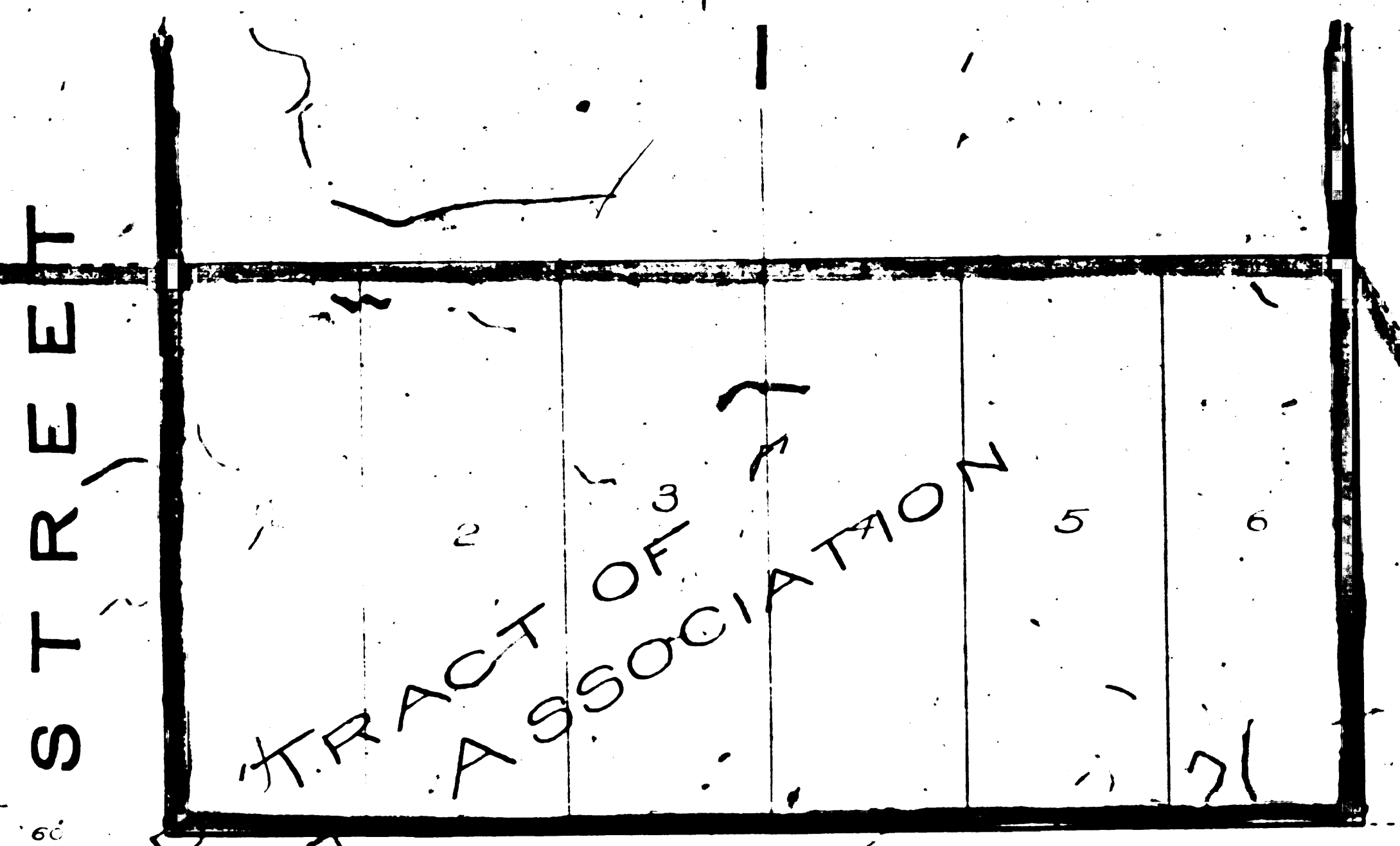
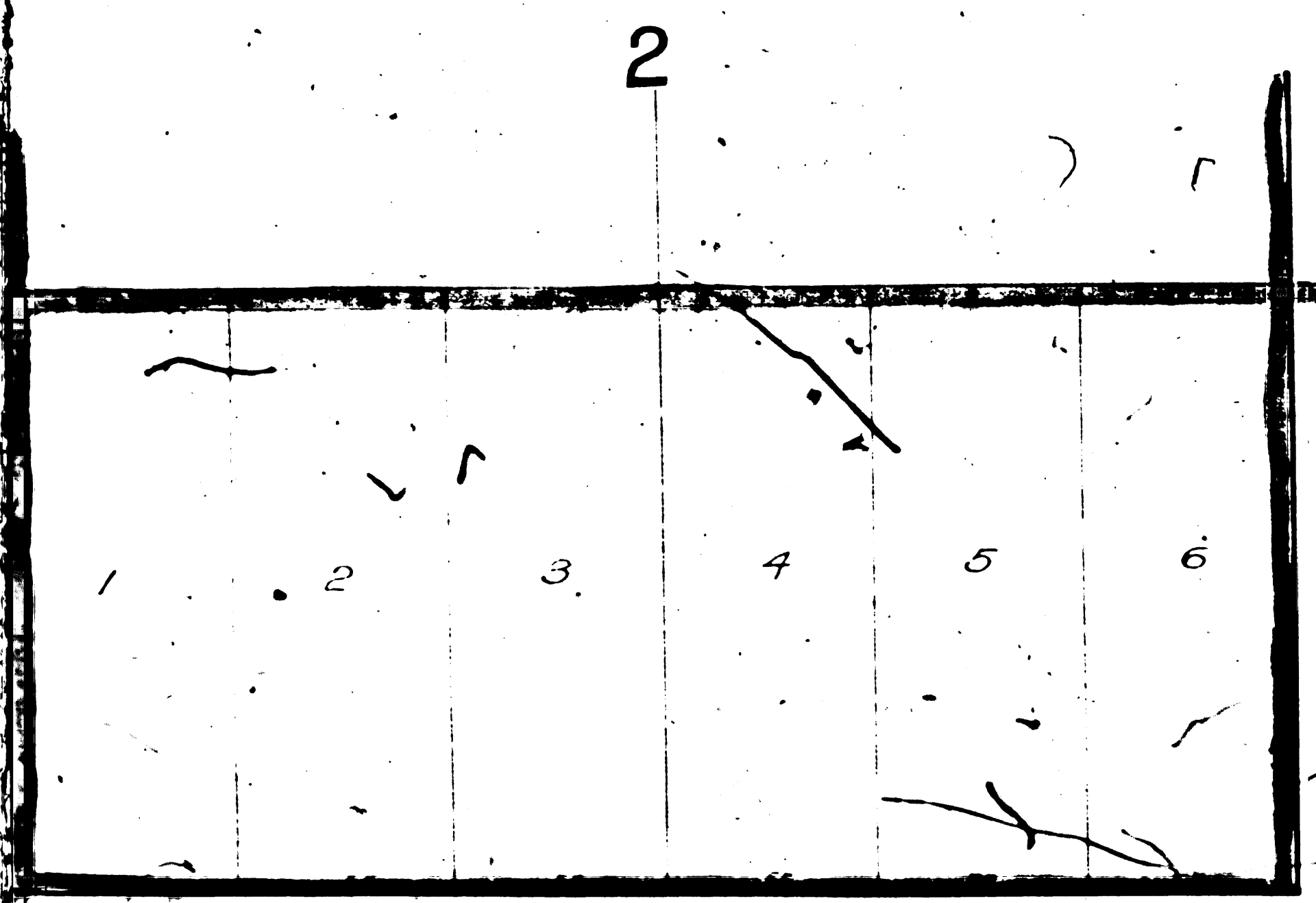
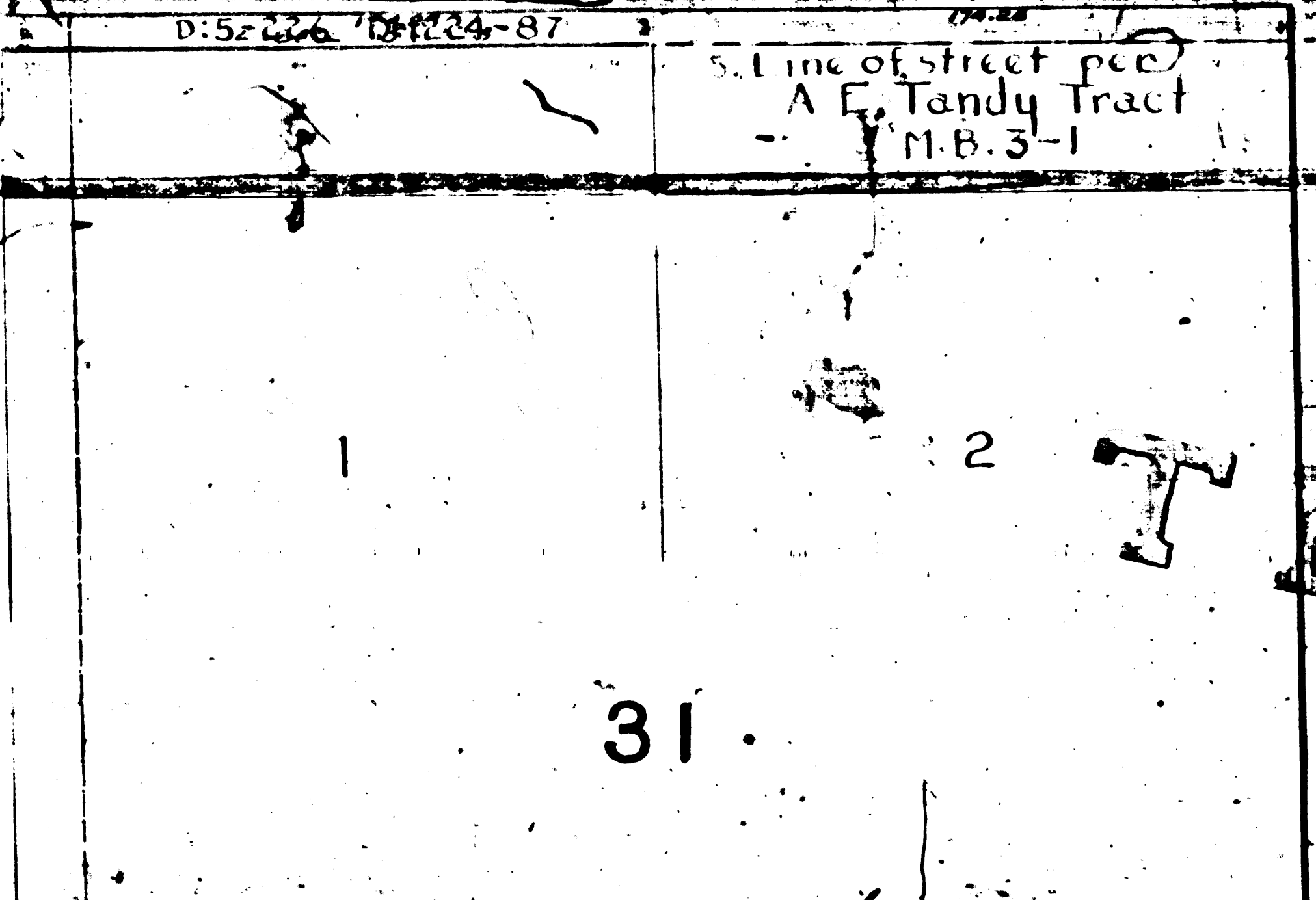
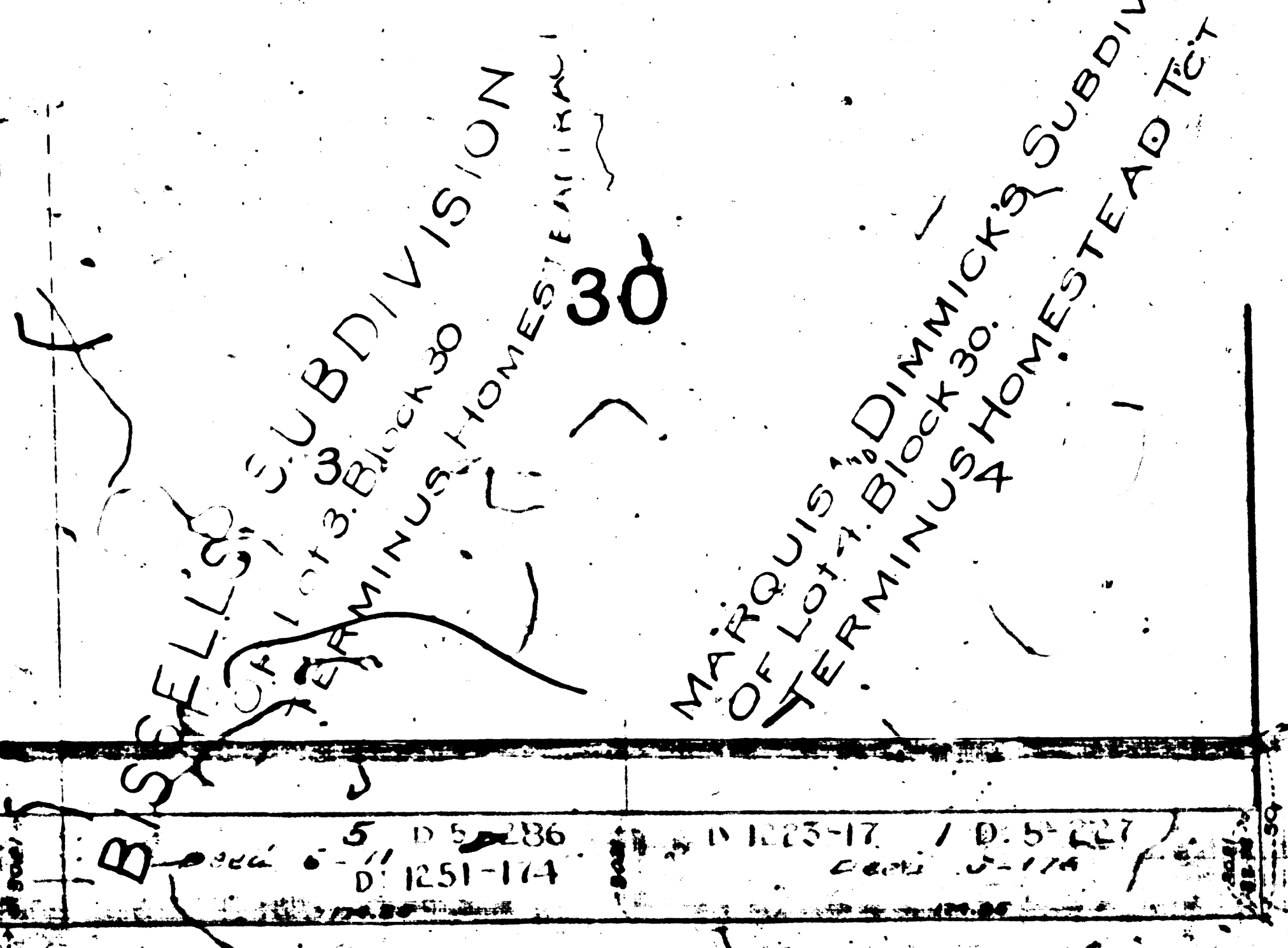


THE ASSESSMENT  
**DARWIN**  
GRIFFIN AV  
UNDER ORD

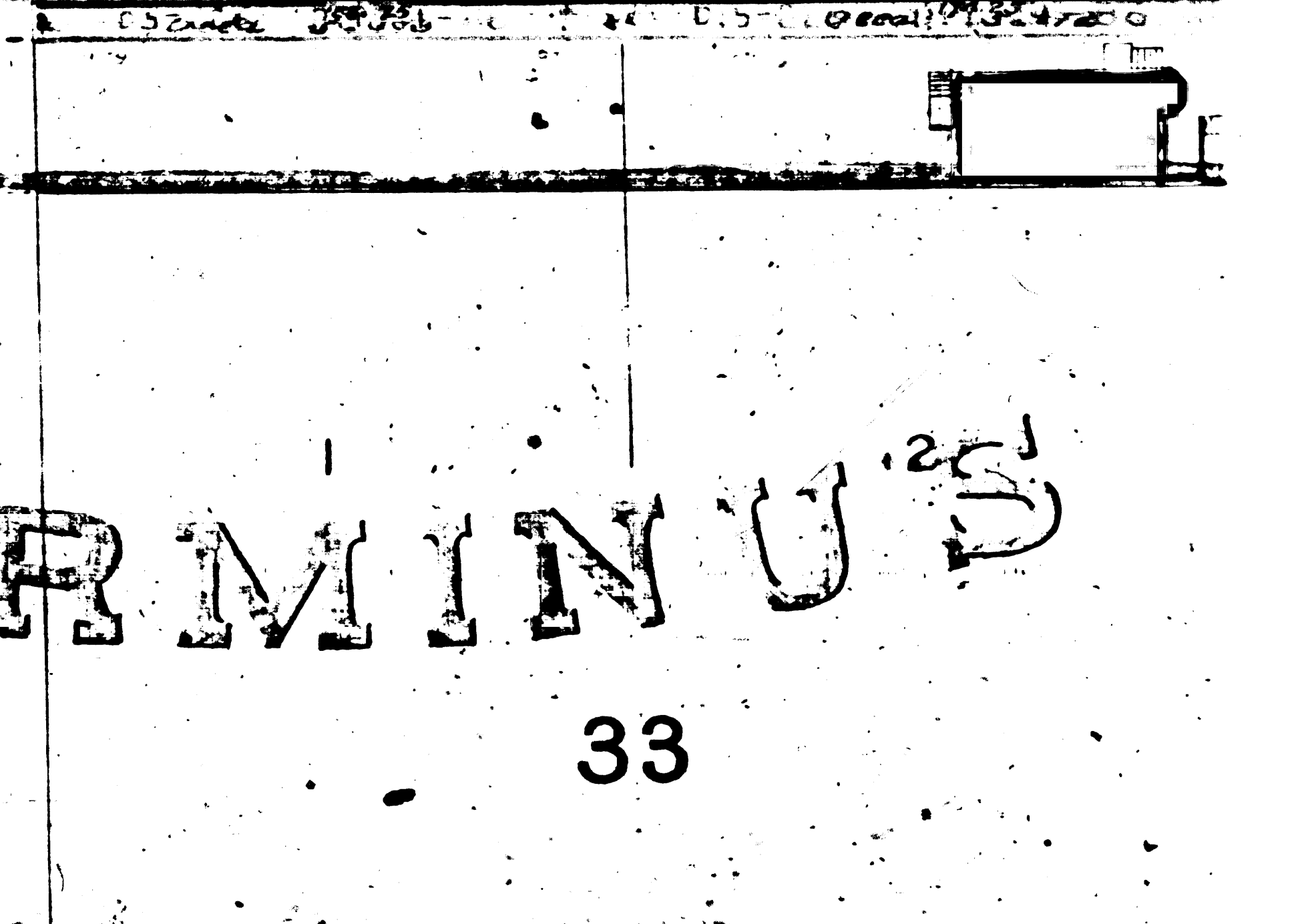
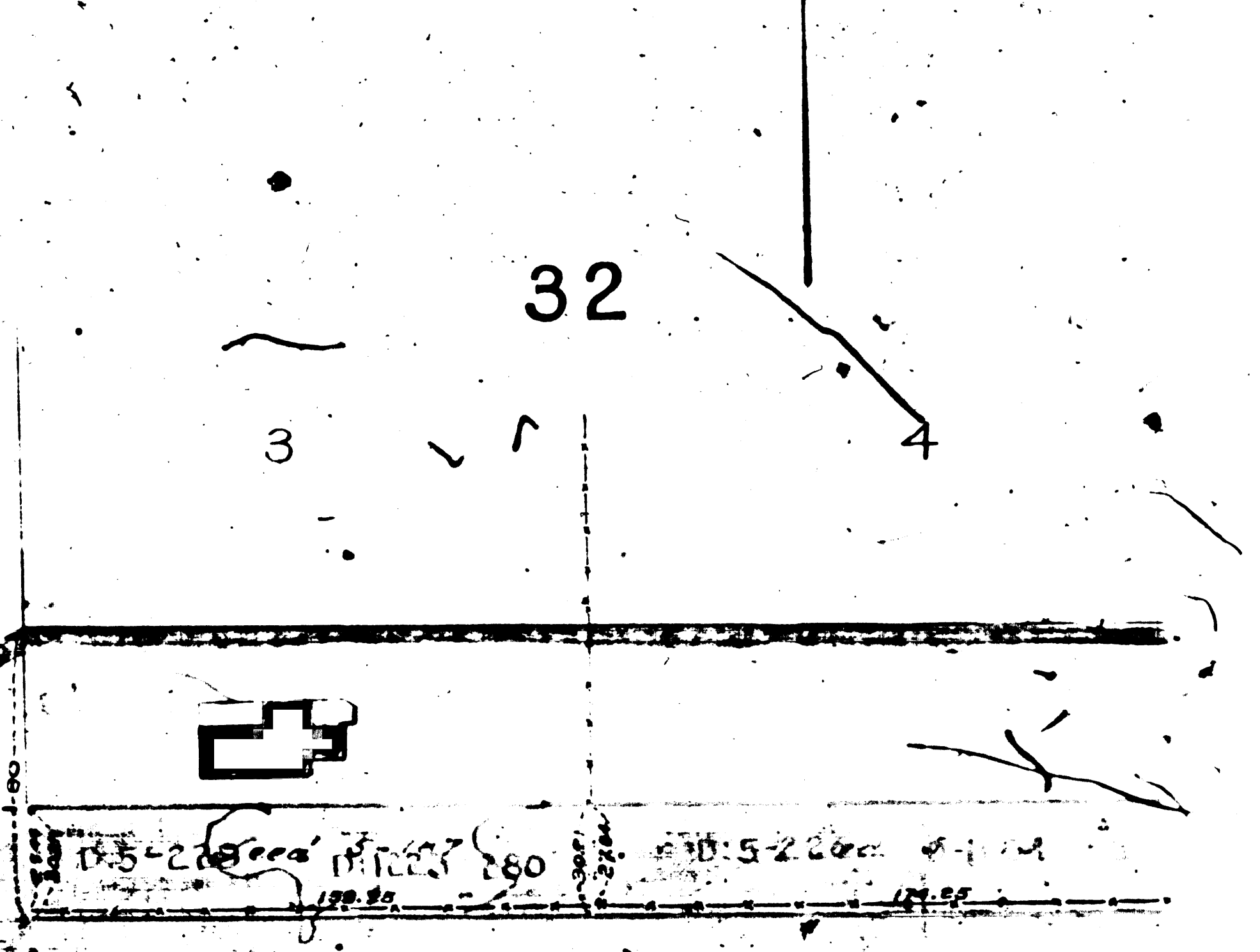
WORKMAN STREET



GRIFFING AVENUE



JOHNS STREET



DARWIN

Index #8

FM 16928  
A1 OF A2

MAP  
OF  
THE ASSESSMENT DISTRICT FOR THE WIDENING  
OF  
**DARWIN AVENUE**  
BETWEEN  
GRIFFIN AVENUE AND THOMAS STREET

UNDER ORDINANCE NUMBER 4363 (New Series)

Scale 1 inch = 60 feet

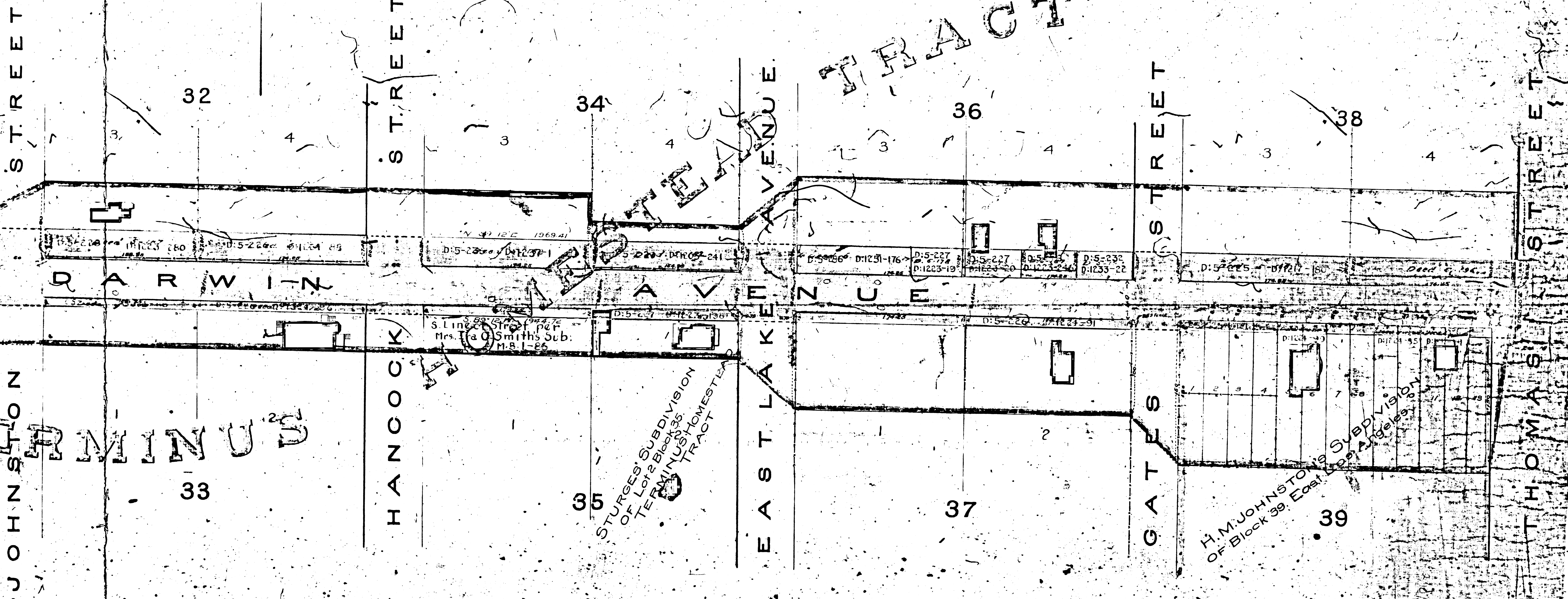
J.H. Dockweiler, City Engineer

Oct 1897.  
Index #8

Nov. 1908

All proceedings completed  
under Ord. 4363 & 4521  
according to plan on file  
For Original, see sec. 412

Note:  
Land to be taken shown Colored Red.  
Exterior boundaries of District of  
Assessment shown Colored Green



**FM 16928**  
**A 2 OF A 2**

Index #8

DARWIN ST.

STREET

THOMAS ST.

STREET

JOHNSTON

STREET

HANCOCK

STREET

GATES

EAST LAKE AVENUE

TRACT

DARWIN

MINUS

STURGES' SUBDIVISION  
OF LOT 2 BLOCK 36  
TERMINUS TRACT

H.M. JOHNSTON'S SUBDIVISION  
OF BLOCK 39, EAST LAKE AVENUE,  
LOS ANGELES, CALIF.