

30

29

28

27

WILSON ST.

END

JUANITA AVE.

MIAMI AVE.

VIRGIL AVE.

D:7-163 D:2180-14

SIXTH WILSHIRE

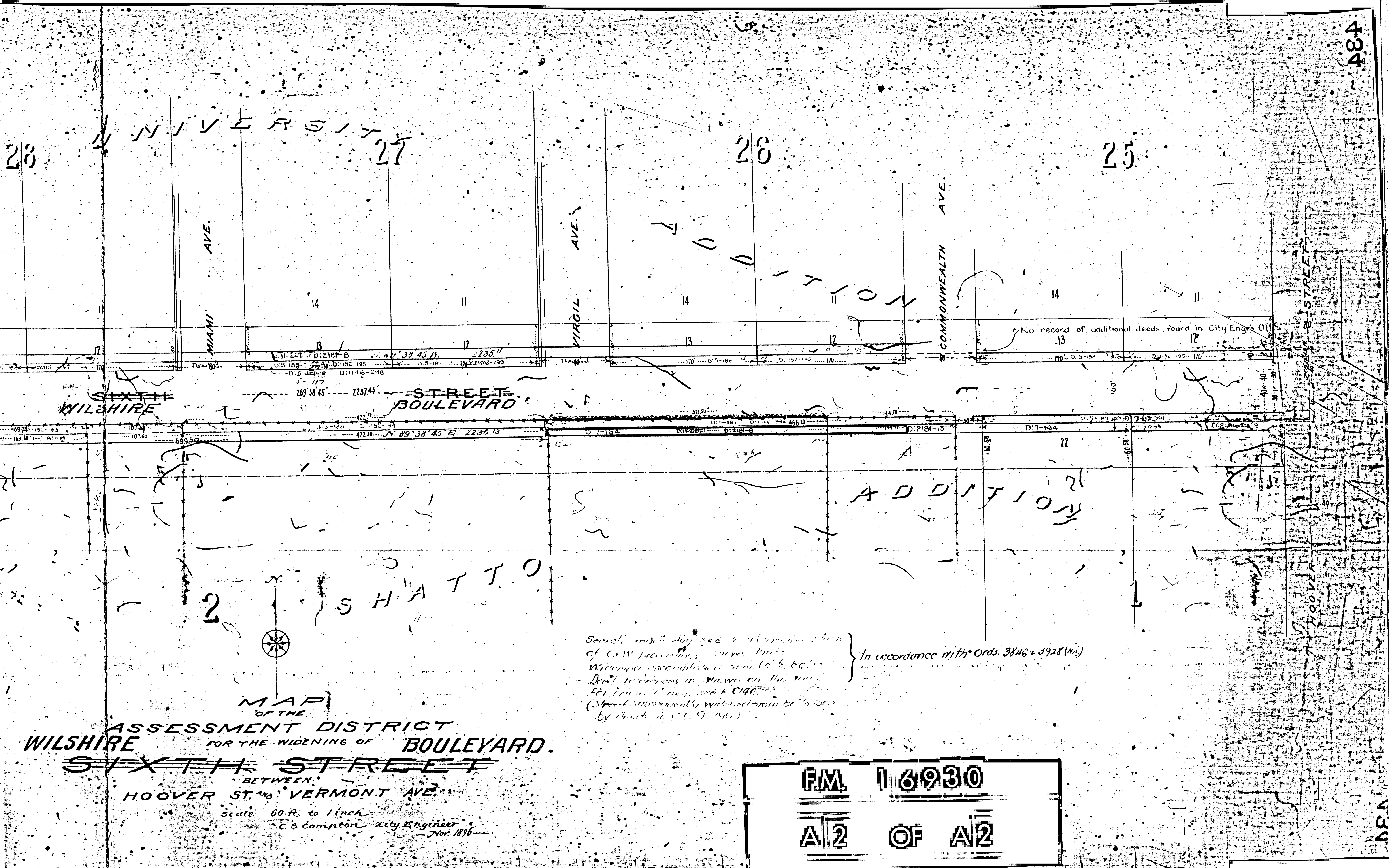
STREET BOULEVARD

SHATTUCK

F.M. 1,6930
A1 OF A2

MAP OF THE ASSESSMENT DISTRICT WILSHIRE FOR THE WIDENING OF BOULEVARD. SIXTH STREET BETWEEN HOOVER ST. AND VERMONT AVE.

Scale 50 ft to 1 inch
C. S. Compton, City Engineer
Nov. 1896



MAP
 OF THE
ASSESSMENT DISTRICT
WILSHIRE FOR THE WIDENING OF **BOULEVARD.**
SIXTH STREET
 BETWEEN
HOOVER ST. AND VERMONT AVE.
 Scale 60 Ft. to 1 inch
 C. S. Compton City Engineer
 Nov. 1896

Search made by me to determine status
 of City Assessments shows that
 Widening accomplished from 66 to 60 ft.
 Deed references as shown on this map
 for record map 3846 & 3928
 (Street subsequently widened from 66 to 60 ft.
 by Ord. 3846 & 3928)

In accordance with Ords. 3846 & 3928 (No.)

PM 16930
A/2 OF A/2

484

484