

CLARK & BRYANS

TWELFTH ST.

LONE STAR TRACT

139 140 141 142 143 144 145 146 147 148 149 150 151 152 153 154 155 156 157 158 159 160

For widening to 80' wide see FM 25136-Sub 1

Lot 162 Clark and Bryans Lone Star Tract

FINNEY TRACT

PICO ST.

FM 16931

11 OF 41



Map  
Showing the District of Assessment for the proposed opening  
**Hoover Street**  
between  
**Seventh St. and Pico St.**

Under Ordinance No 4499 (New Series)

Scale 1 inch = 50 ft.

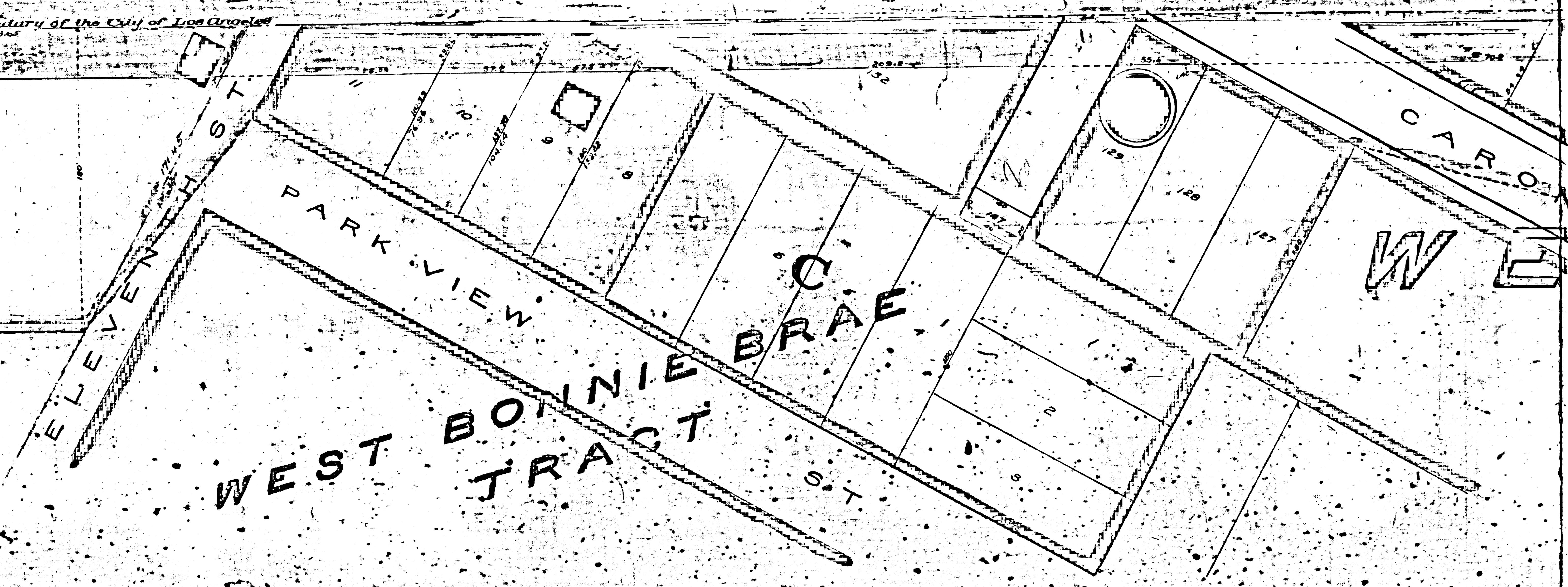
J. H. Dockweiler City Eng  
Oct 30<sup>th</sup> 1897.

Note  
Land to be taken shown colored Red. Exterior  
Boundaries of District of Assessment. Shown  
colored green.

North.

TRACT

ELEVENTH ST.  
S. W. 1/4 of Sec 30. T. 1 S. R. 13 W. S. B. M.



FM 16931  
A 2 OF A 4



Aug. 1901

Proceedings abandoned  
by Ord. # 5284  
see later movement  
under maps # 6277

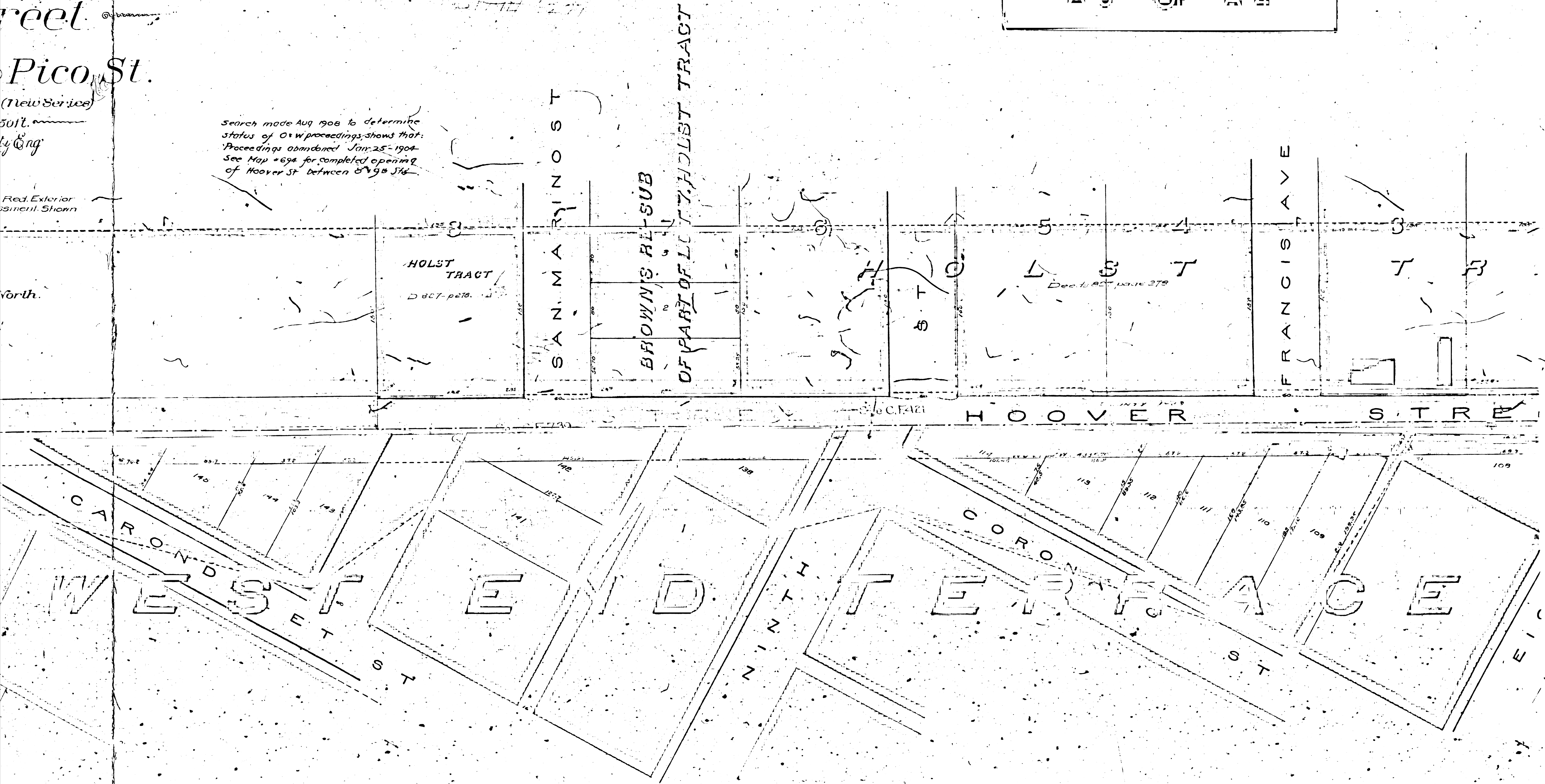
FILED || 6. 23 11  
A 3 OF A 4

Proposed opening & widening of  
street  
Pico St.  
(New Service)

Search made Aug 1908 to determine  
status of O & W proceedings, shows that:  
Proceedings abandoned Jan. 25 - 1904  
See Map # 694 for completed opening  
of Hoover St between 8 & 9th St.

Red Exterior  
shown

North



HOLST TRACT  
Dec. 1, 1897

SAN MARINO ST

BROWN'S ALLEY  
SUB OF PART OF L.C. HOLST TRACT

HOOPER ST

FRANCIS AVE

HOOPER STREET

WEST 9TH ST  
WEST 10TH ST  
WEST 11TH ST



11 6 9 3 11  
A 4 OF A 4

