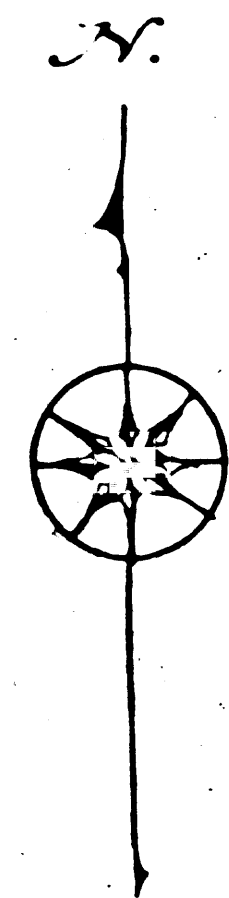


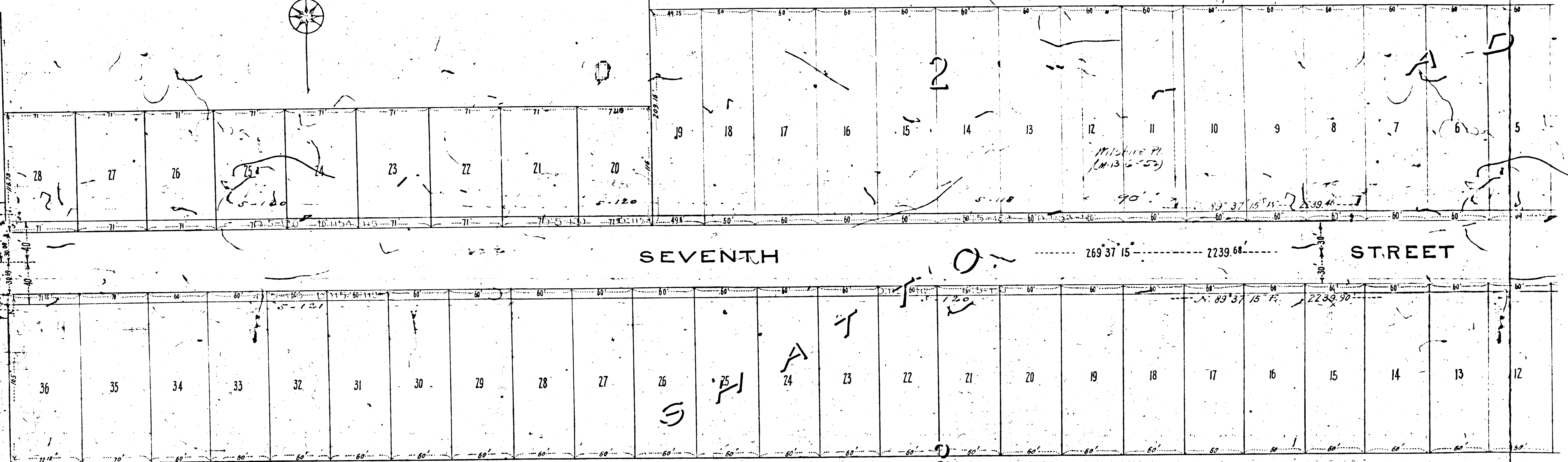
MAP
OF THE
ASSESSMENT DISTRICT
FOR THE WIDENING OF
SEVENTH STREET
BETWEEN
HOOVER ST. AND VERMONT AVE.

Scale 60 ft to 1 inch
C. S. Conington City Engineer
Nov. 1896

All info
under C
Location
For Orig



VERMONT AVE. 359° 52' 45" 739.66 to corner Sec. 30.



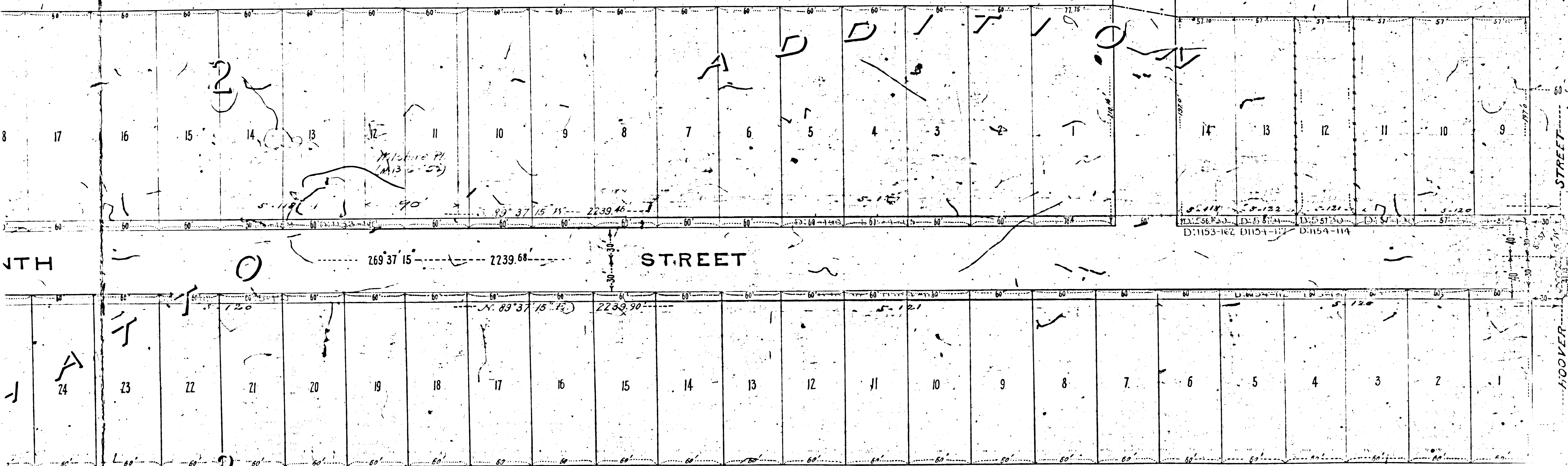
IF YOU
11 6 9 3 3
A 11 OI A 2

MAP
OF THE
ASSESSMENT DISTRICT
FOR THE WIDENING OF
SEVENTH STREET
BETWEEN
HOOVER ST. AND VERMONT AVE.

Scale 60 ft. to 1 inch
C. S. Compton City Engineer
Nov. 1896

Aug. 1908

Shows
All proceedings completed
under Ords. # 3945, 3929 & 3979 (MS)
Location - As shown on this map
For Original map See # 6145



IF YOU
|| 6 9 3 3
▲ 2 ○ 2 ▲ 2