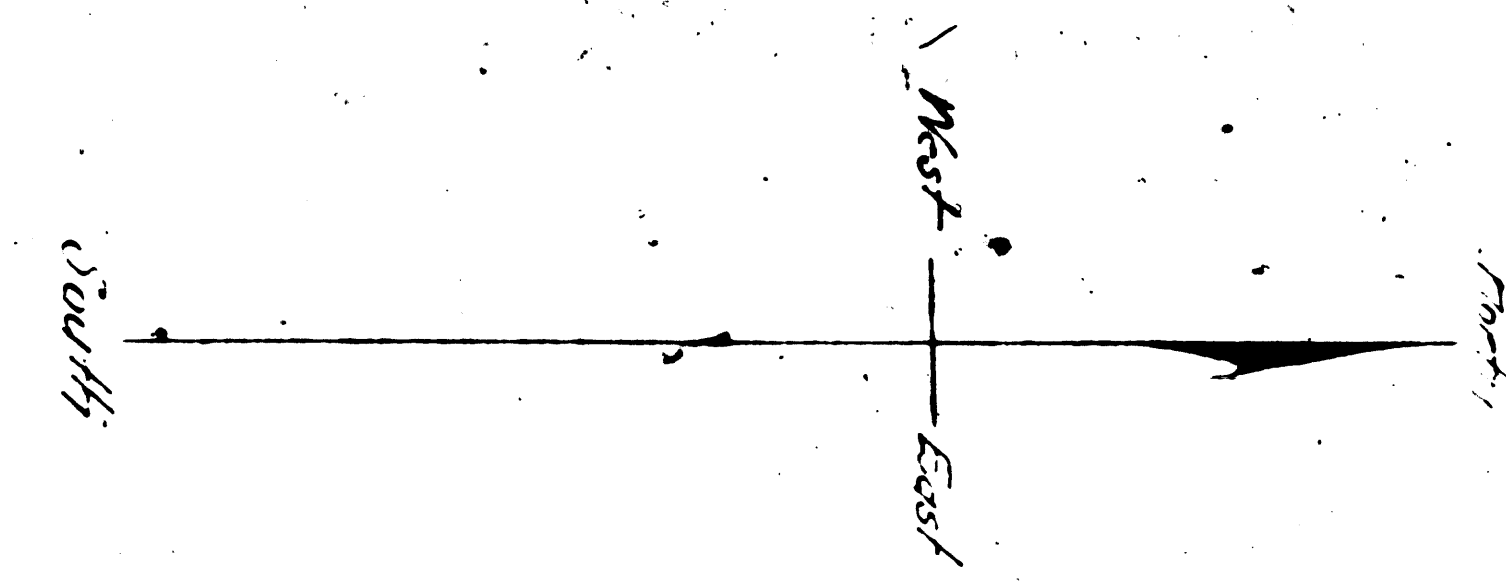
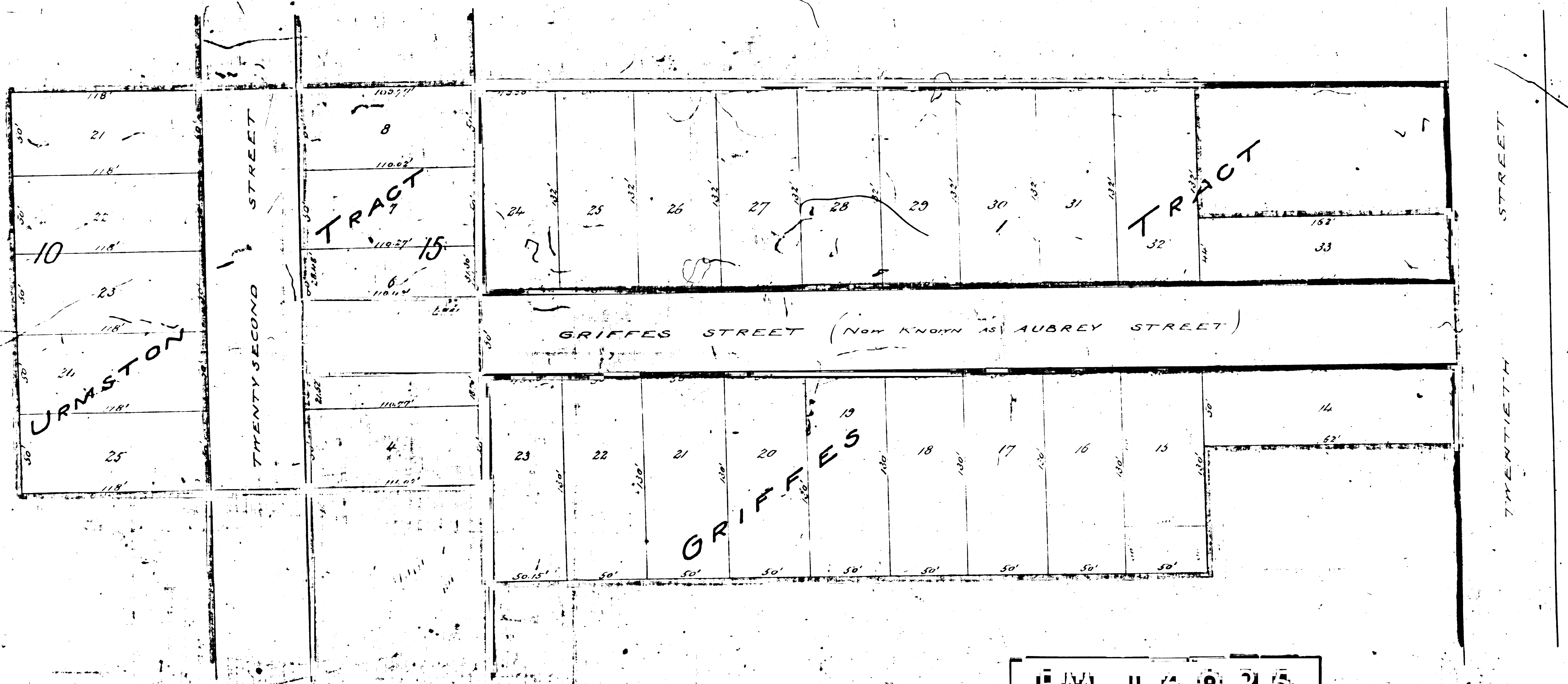


MAP
 SHOWING ASSESSMENT DISTRICT
 FOR THE
OPENING AND EXTENDING
 OF
GRIFFES STREET (NOW KNOWN AS AUBREY STREET)
 FROM ITS PRESENT SOUTHERN TERMINUS, SOUTHERLY TO TWENTYSECOND ST.
 IN THE CITY OF LOS ANGELES,
 June 1897, J.H. Dockweiler
 City Engineer
 Scale 50 ft. to 1 inch.
 Ordinance # 4034, (N.S.)
 Field book 688, page 45.



Note - Blue lines and figures show property lines and dimensions, in those cases
 where the actual readings differ from the recorded subdivisions.
 Exterior boundaries of assessment district shown colored green.
 Land to be taken shown colored red.



FILED 11 6 9 3 5