

MAP
Showing Assessment District for the
PROPOSED WIDENING
OF

VENICE - BV

Sixteenth Street

BETWEEN

BUSH ST
HOOVER ST

CITY OF LOS ANGELES CAL.

J.H. Dockweiler City Eng'r
Scale 1 inch = 40 ft.

Ordinance No. 4606.

Note
Lots to be taken colored Red
Lots to be included in Assessment District colored green

LOT 4, BLK B, H.S.

HOOVER

STREET

RE-SUB

Part of Lot 5, Block 'B' Hancock Survey.

SIXTEENTH

STREET

S.T.

VENICE - BV

CHOWA
TRACT

116936
OF 2

MAP
Assessment District for the
PROPOSED WIDENING

OF
VENICE BLVD.

SIXTEENTH STREET

Street

BETWEEN

BUSH ST
AND HOWARD ST

CITY OF LOS ANGELES CAL.

J.H. Dockweiler City Engr.
Scale 1 inch = 40 ft.

Ordinance No. 4606.

Note:
The colored lines
on this map are for Assessment Districts only.

LOT 4, BLK B, H.S.

IF/MA 11 6 9 316
A 2 OF A 2

STREET

RE-SUB

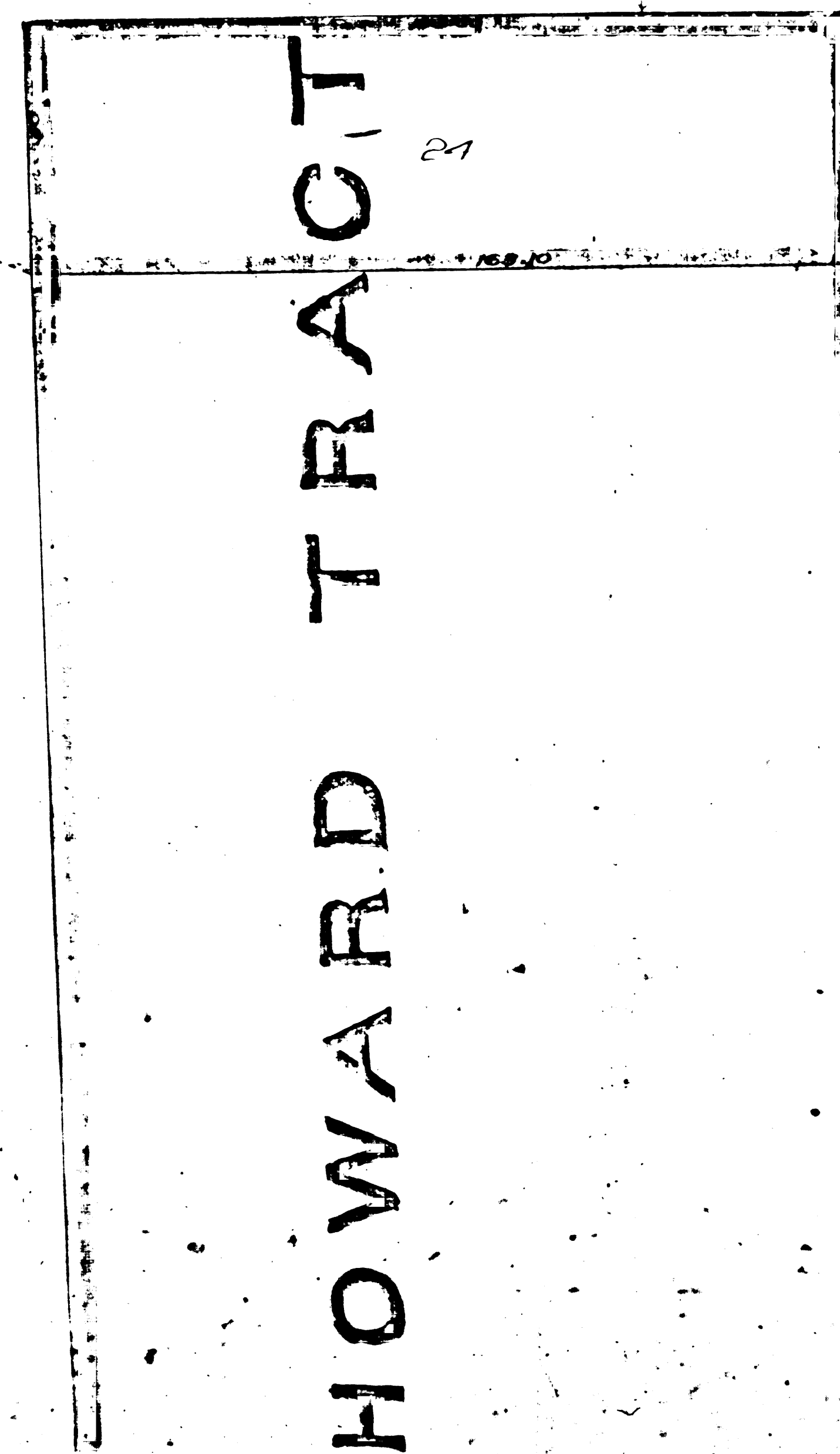
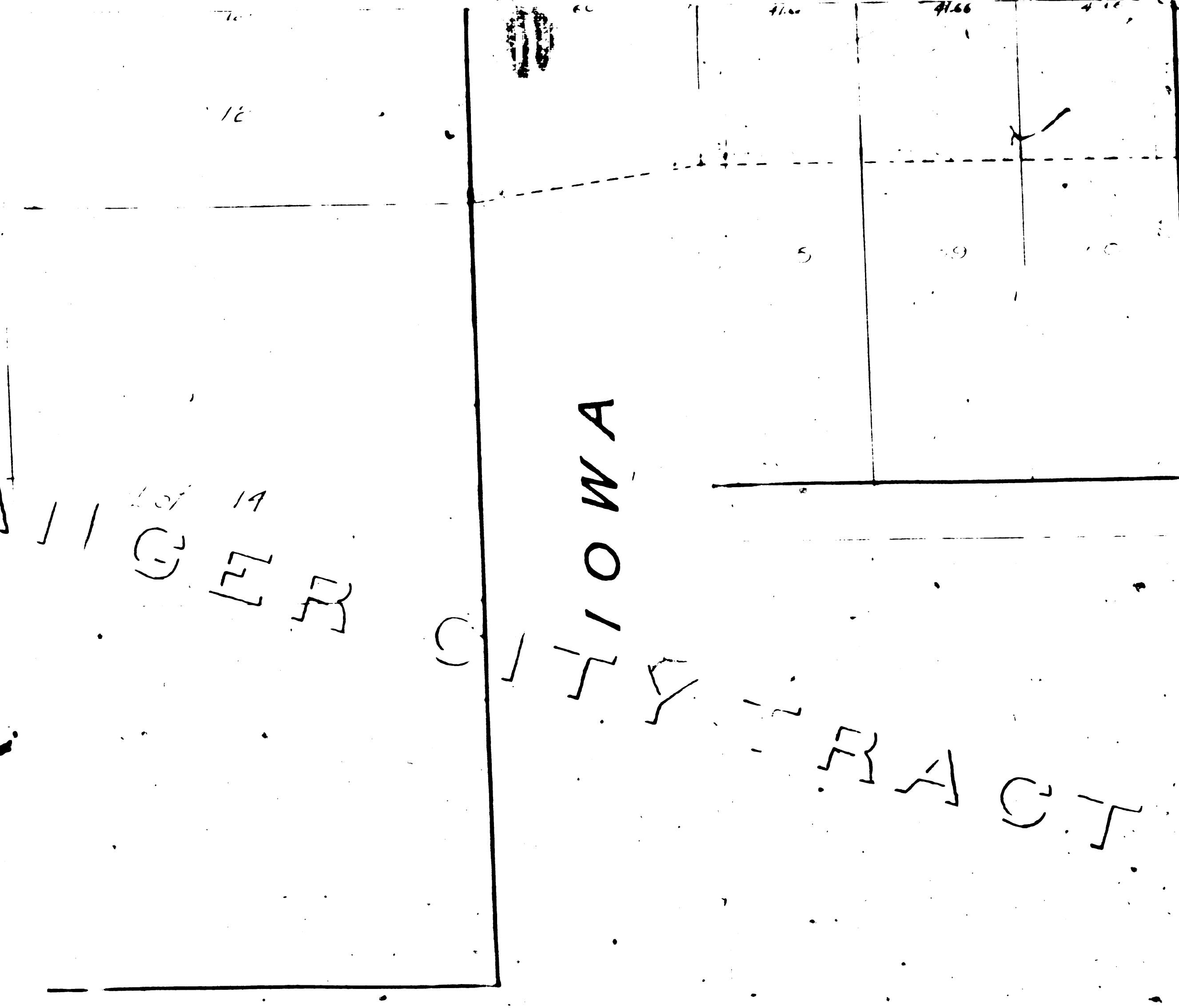
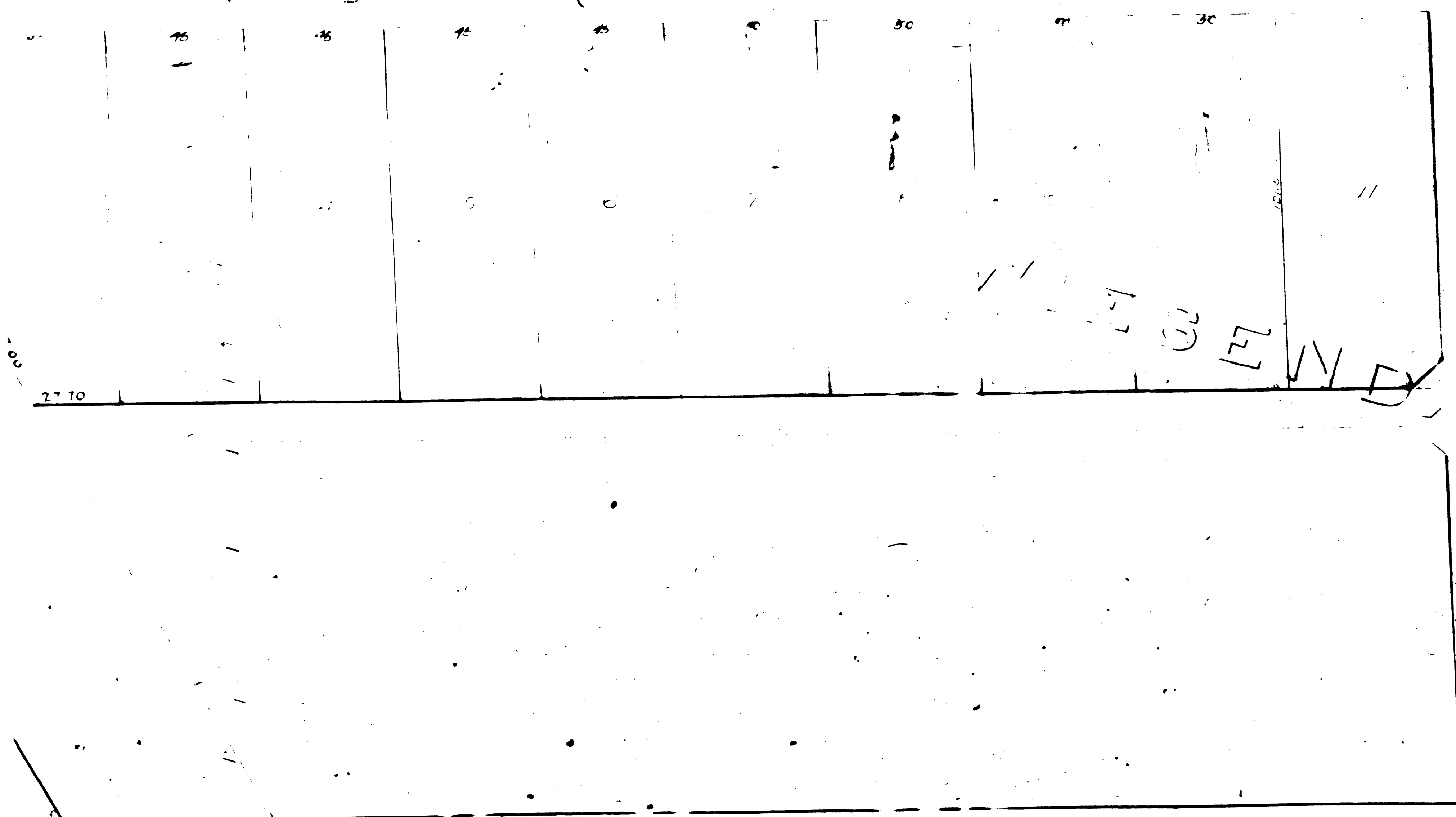
OF THE JONES TRACT

STREET

Part of Lot 5, Block B, Hancock Survey.

SIXTEENTH

STREET



EUGENIA
BUSH