

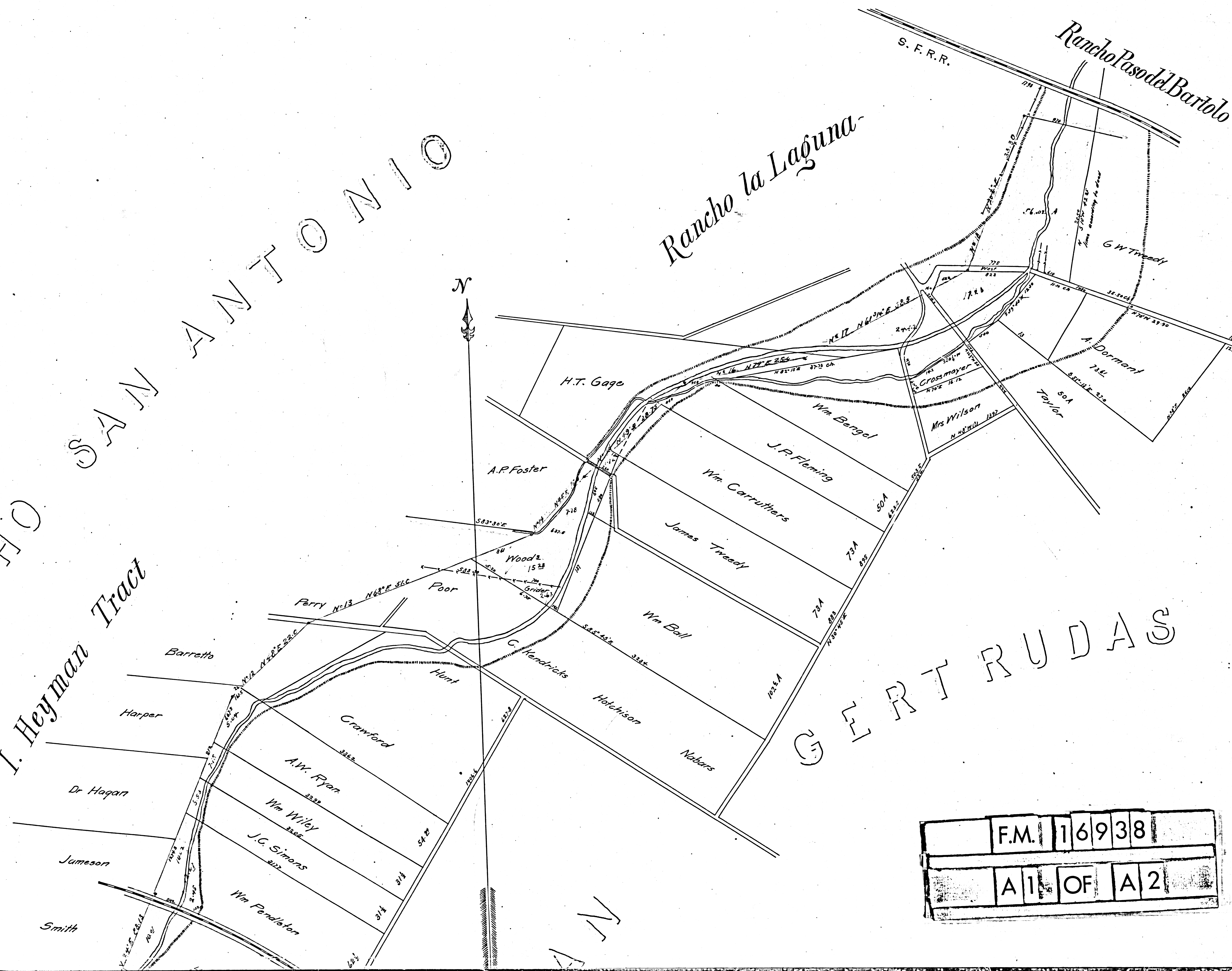
RANCHO SAN ANTONIO

I. Heyman Tract

Rancho la Laguna

Rancho PasodelBarboto

S. F. R. R.



GUERTRUDAS

| | | | | | |
|------|----|----|---|---|---|
| F.M. | 1 | 6 | 9 | 3 | 8 |
| A1 | OF | A2 | | | |

119
14

RANCHO
I. Heyman Tract

GERTRUDAS

F.M. 16938
A 2 OF A 2

L. Philips Tract

RANCHO

SAN

MAP

showing a portion of the western boundary line of

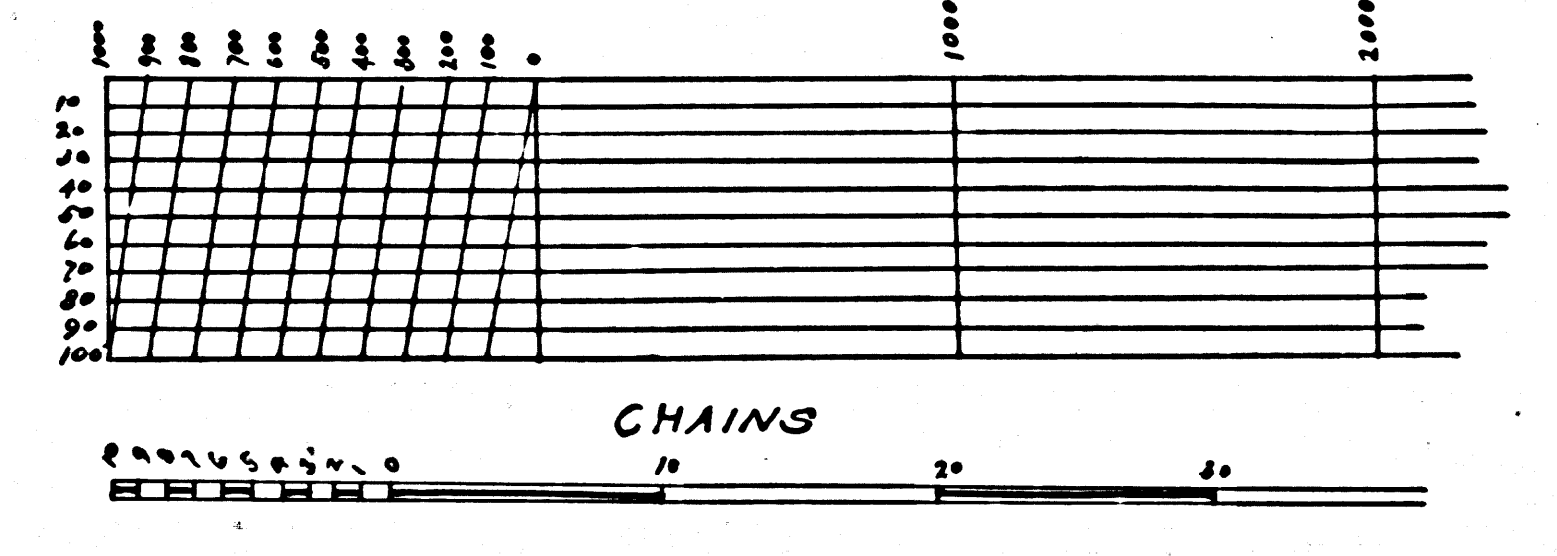
THE
SAN GERTRUDAS RANCHO

also the lands along the bed of the
OLD SAN GABRIEL RIVER

belonging to
Hon. John C. Downey.

IM 32

SCALE
660 feet or 10 chains one inch
FEET



Surveyed in Aug Sept Oct 1889
under the contract of
W^m Moore Esq.

Gustave De Lencastre
C.E.

Gustave
De Lencastre

Copied from Map loaned by Downey Estate
Feb 1898 Hamilton

FILED MAP NO 16938

FILED MAP NO 16938

