

MAP SHOWING
 THE ASSESSMENT DISTRICT
 FOR THE OPENING OF AN
 ALLEY BETWEEN SPRING ST. AND BROADWAY
 SIXTH ST. TO SEVENTH ST.
 CITY OF LOS ANGELES

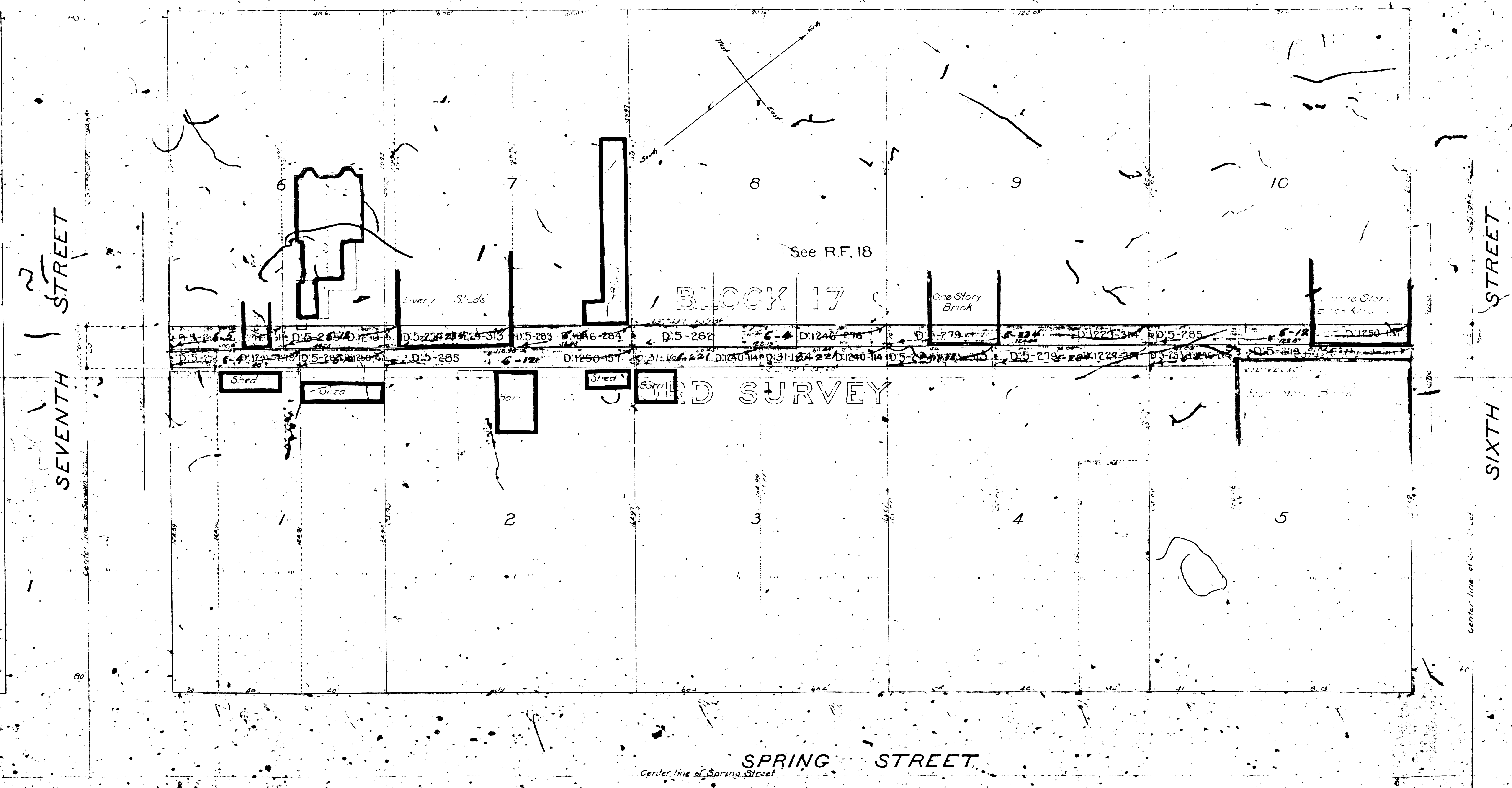
August 1908

Scale 1 inch = 30 feet
 J.H. Bockweiller City Engineer
 January, 1898 Ordinance 4639

All proceedings completed
 Dec. 5, 1908
 Printed May 1, 1909

The land to be taken is shown by the Red tint
 The exterior boundaries of the Assessment District are shown by the Green tint

Center line of Broadway
 BROADWAY



F.W. 116940