

95

95

~~SECRET~~

GROUP 6-17

South Atlantic

C.F. 222

F.M. 16944
A1 OF A6

DURANGO ST

JEFFERSON

JEFFERSON STREET TRACT

R. 14 W

SEC. 2

WESTERN AVENUE

FM 16944
A2 OF A6

17	16	15	14	13	12	11	10	9	8	7	6	5	4	3	2
		84	10	11	12	13	14	15	16	17	18	19	20	100	101

MAP 35
ASSESSMENT
FOR THE
JEFFERS

FROM VERMONT AVENUE
CITY OF L
under Ordinance 4656N
Scale 1 inch = 50 feet
The land to be taken for street
The exterior boundaries of the

R. 14 W.

AVENUE

T. 2 S. R. 14 W.

22

ALARCON ST.

23

PEABODY AVE.

24

THE CHAS VICT

PIONEER AVE.

25

STREET

SEC. 2

WESTERN

SEC. 1

FM 16944

A3 OF A6

DENKER AVE.

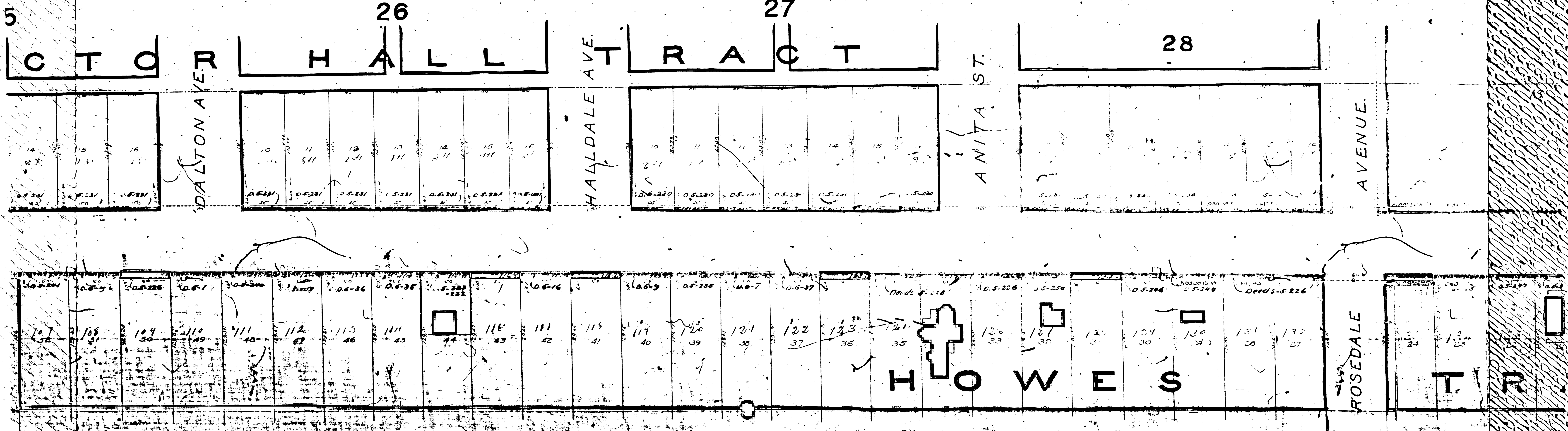
MAP SHOWING THE
ASSESSMENT DISTRICT
FOR THE WIDENING OF
JEFFERSON STREET BY
ERMONT AVENUE TO THE WEST CITY BOUNDARY
CITY OF LOS ANGELES, CAL.

Ordinance 4656 (New Series), approved November 5, 1897
J.H. Dockweiler City Engineer
to be taken for street purposes is shown colored red
lotter boundaries of the assessment district are shown colored green

August 1908

All proceedings complete
and street widened as shown
on this map
Original map 4656-2

MO



FM 116944
A4 OF A16

13

14

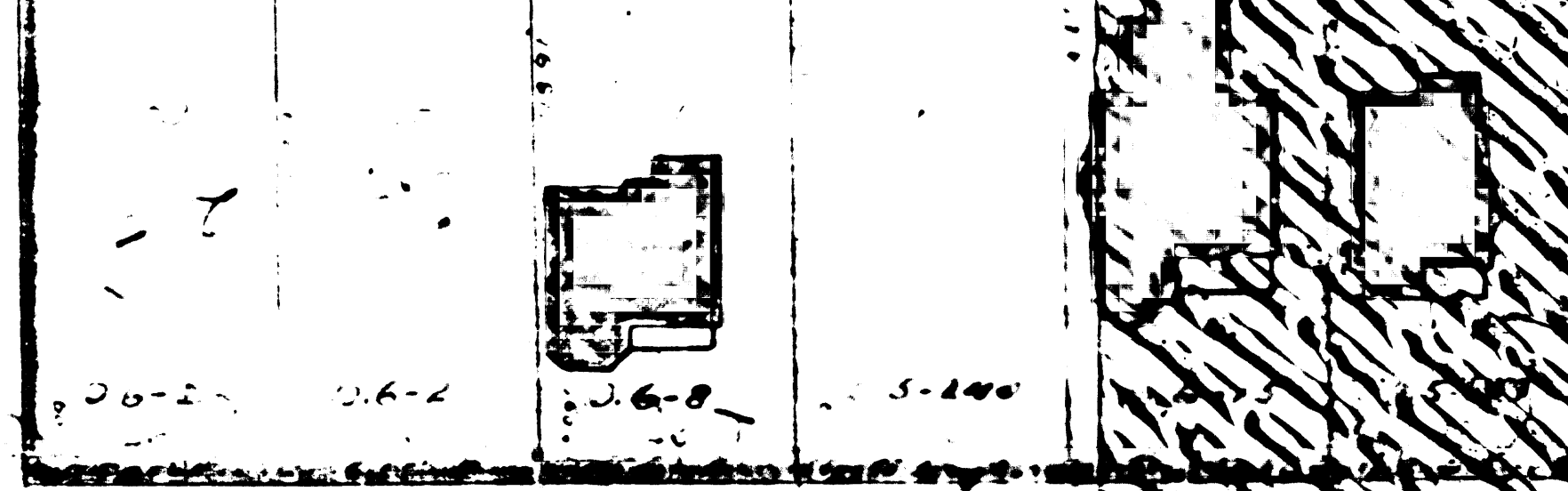
15

16

REED'S SUBDIVISION OF THE W 1/2 OF THE NE 1/4 OF Sec. 1, T 2 S. R 14 W.

AVENUE

WIESENDANGER



T R A C T 8

RAYMOND AVE.

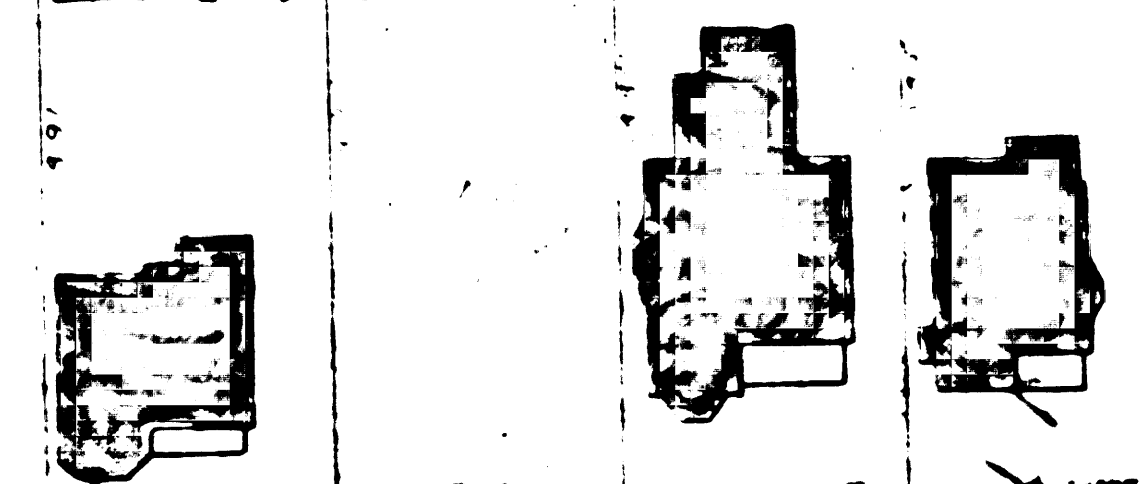
BUDLONG

FM 116944

A5 OF A6

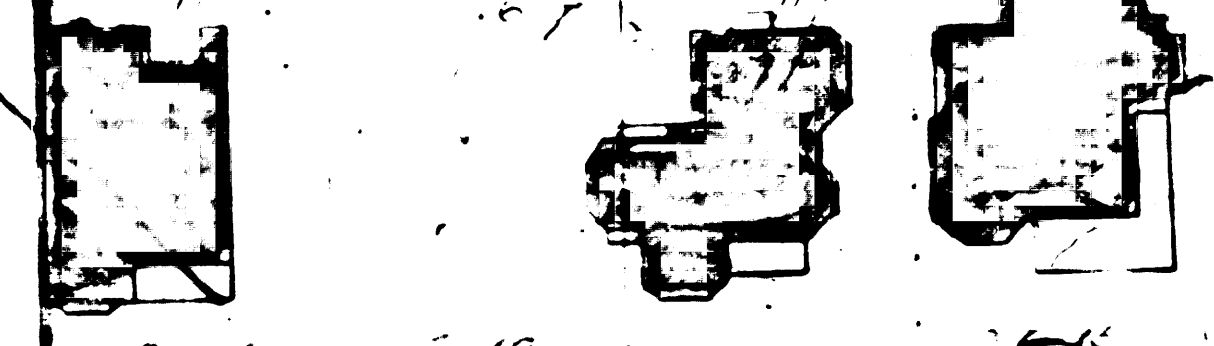
AVENUE

WIESENDANGER



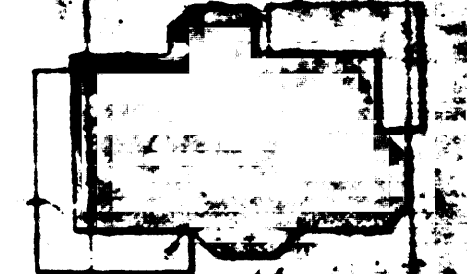
WALTON AVE.

TRACT



AVE.

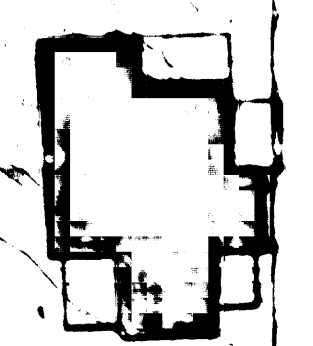
ROBEDEAU TRACT



T. 28S. R. 14 W.

JEFFERSON STREET BV

BURLONG



KANSAS



ELLIO T TRACT

FALLMAN ST.

VERMONT AVE

FM 16944

A/6 OF A/6