

Sec 20 T2S R13 W

Sec 17 T2S R13 W

SEC. 17 - 20
R. 13 W.

SOUTH MERIDIAN CALLED SOUTH STANLEY AVENUE

Section boundary of the

Section Line

N 0° 06' 30" W 5263.44'

1274.75'

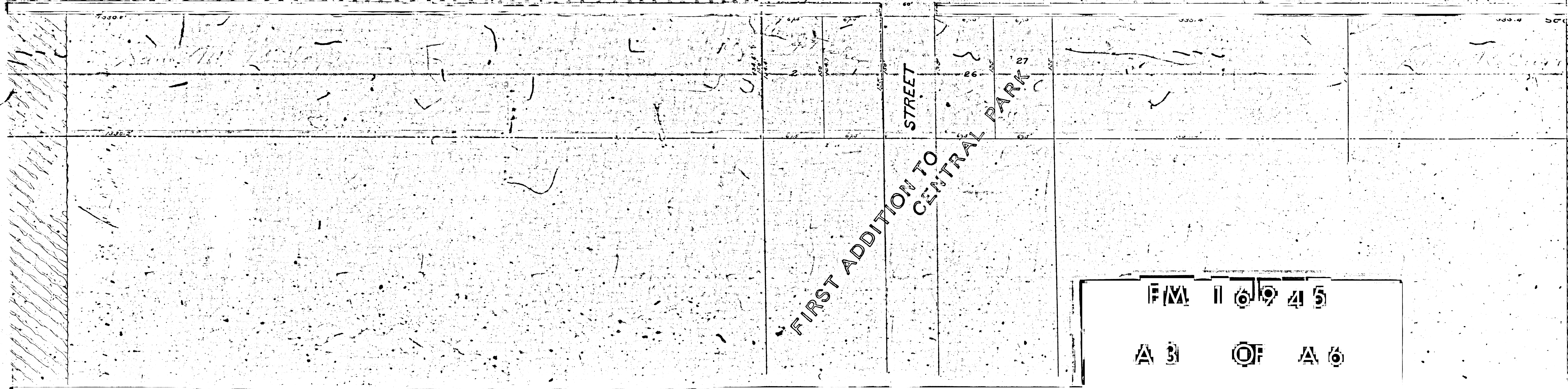
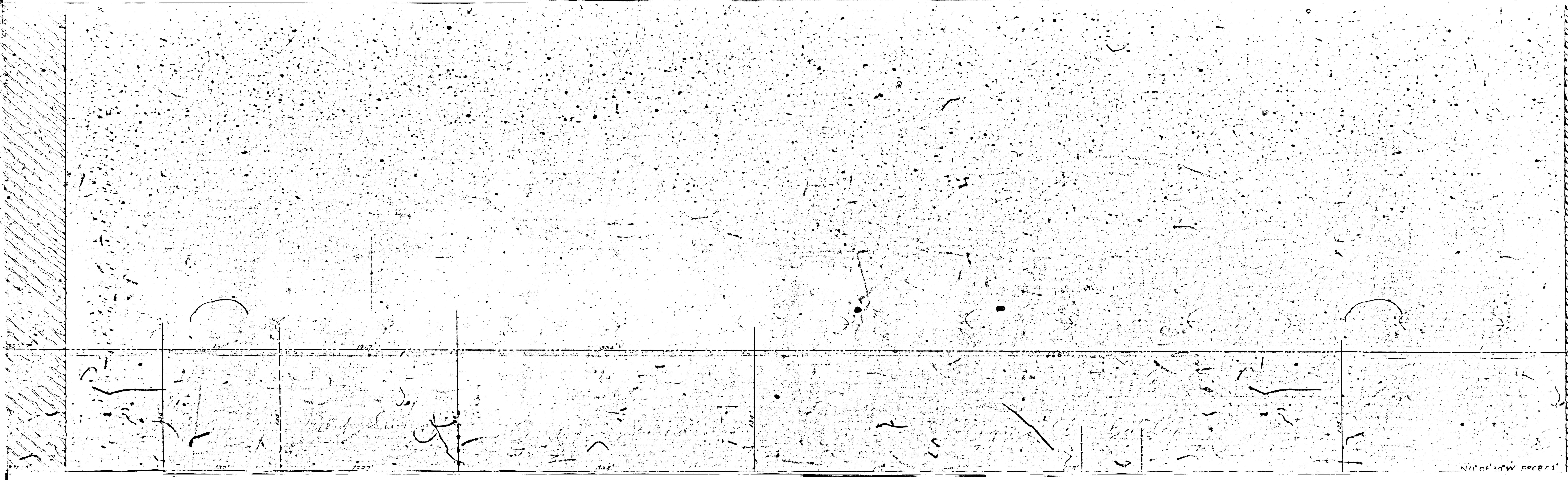
1170.00'

South Park
STANLEY AVENUE

F M 1 6 9 4 5

A 1 0 F A 6

F/M 116945
A 2 OF A 6



F/M 11 6 9 4 5
A 3 OF A 6

MAP SHOWING
ASSESSMENT DISTRICT
 FOR THE WIDENING AND STRAIGHTENING OF
STANLEY AVENUE

CITY OF LOS ANGELES, CAL.
 Under Ordinance 4607 (New Series), approved October 15, 1897

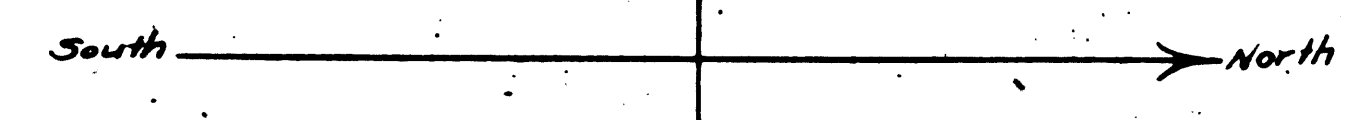
Aug 1908

Sht. 7

Scale 1 inch = 60 feet J.H. Dockweiler, City Engr.

The exterior boundaries of the assessment district are shown colored green
 The land to be taken for street purposes is shown colored red

All proceedings completed
 under Ord. 4607-4945-4949
 Location - As shown on this
 for Ord. 11700 Sec.



SEC. 17 T
 2 S
 R. 13 W.

SEC. 8 T
 2 S
 R. 13 W.

FORTIETH ST.

AVENUE

VERNON

KENDALLS
 OF VILLA LOTS
 AND SUB.

F/M 16945
 A 4 OF A 6

July 1901

110W South Park Ave.

was completed
#4607-4746-4919 N.S.
as shown on this map
map 5701 & 4412

D

FREEMAN SUBDIVISION
OF THE COPELAND TRACT

A

Blk 1

ORCHARD

STANLEY

FORTIETH ST.

THIRTY NINTH ST.

PENNY TRACT

THIRTY EIGHTH ST.

TRACT

THIRTY SEVENTH ST.

FMA 116945

A 5 OF A 6

Blk 1

SAN PEDRO ST.

AVENUE

JEFFERSON ST. BY

Blk 2

JEFFERSON ST. BY

F/M 116 9 45

A 6 OF A 6