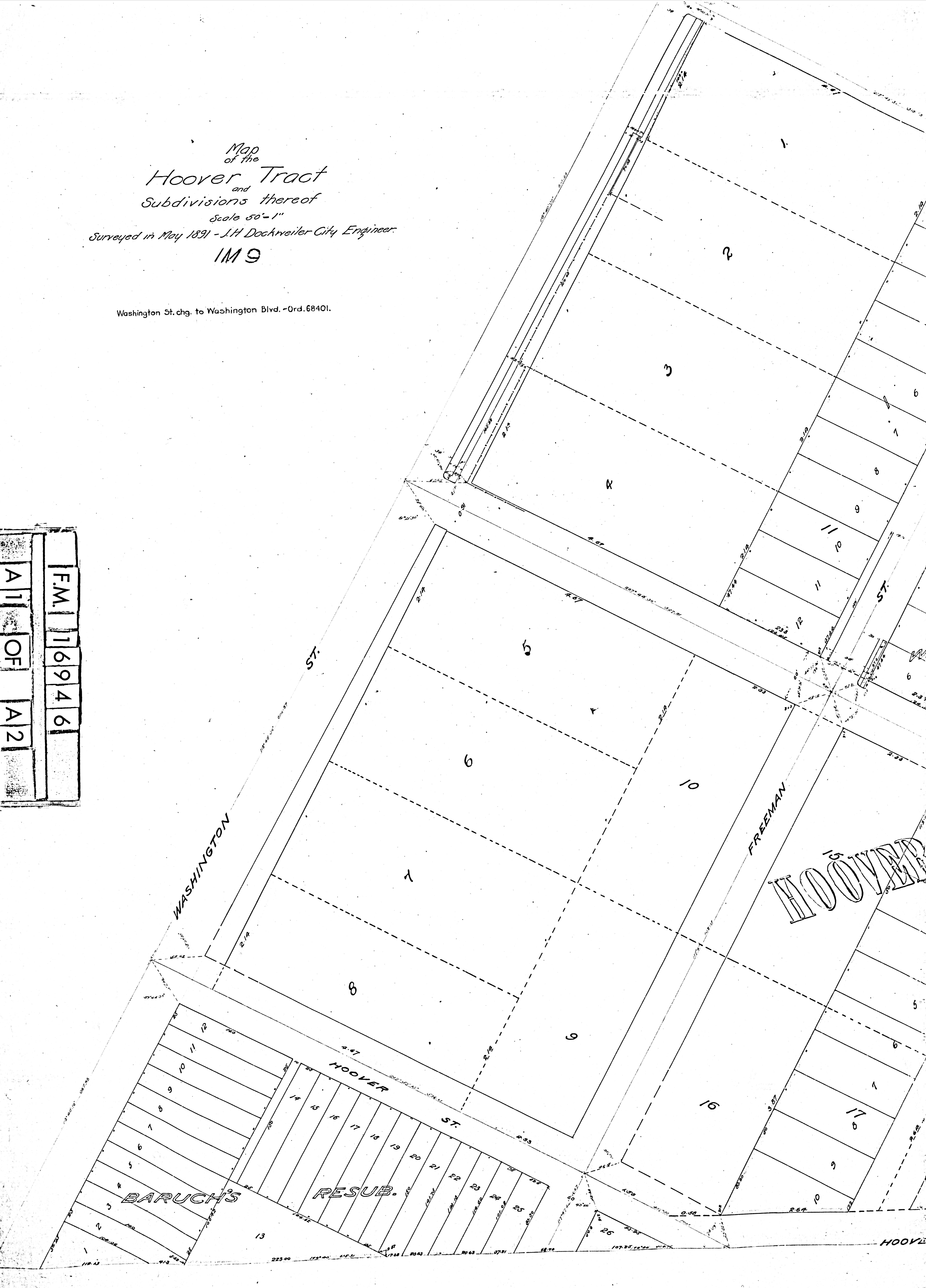


Map  
of the  
**Hoover Tract**  
and  
Subdivisions thereof  
Scale 50'-1"  
Surveyed in May 1891 - J.H. Dockweiler City Engineer.  
**1M9**

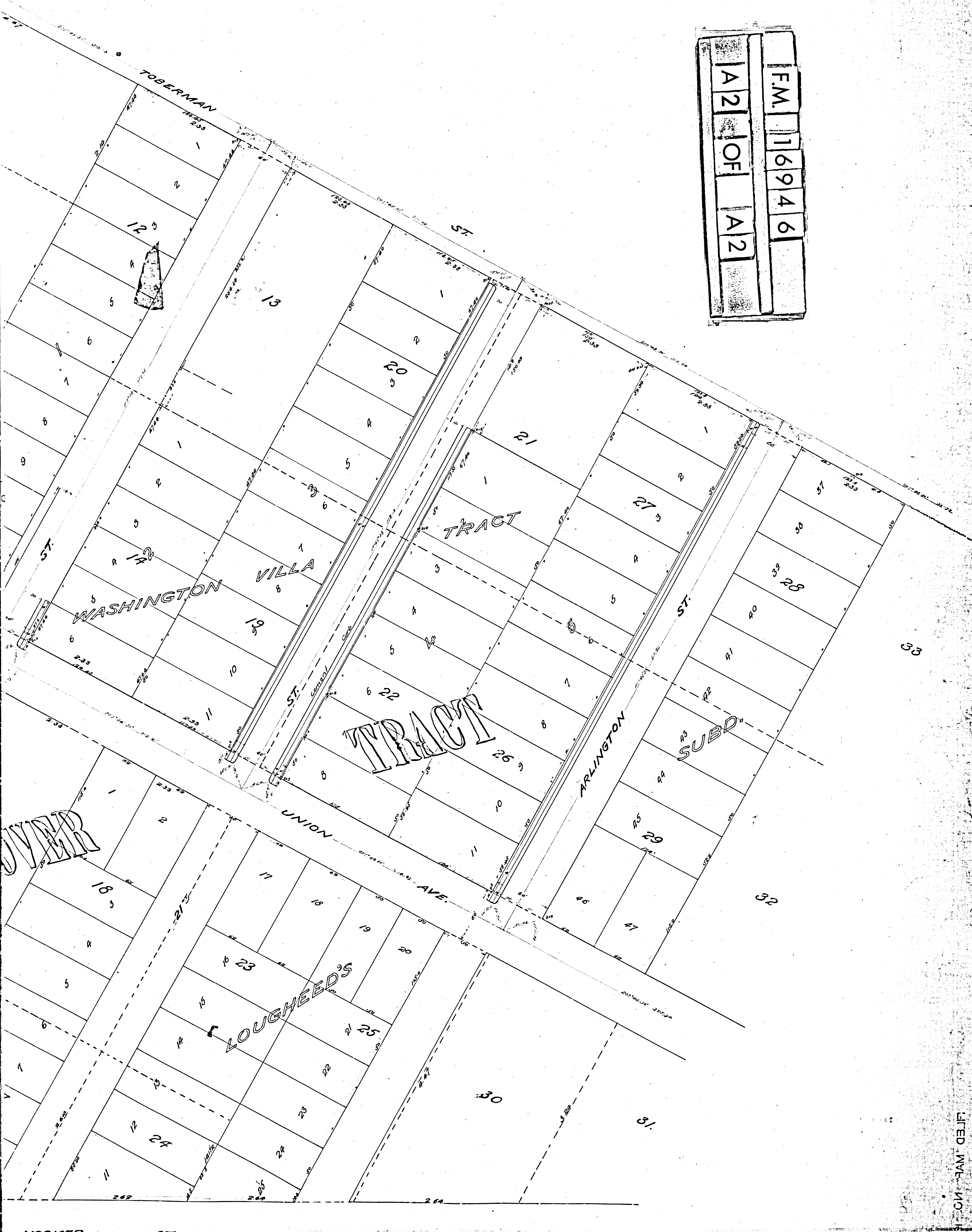
Washington St. chg. to Washington Blvd. - Ord. 68401.

F.M. 16946  
A 11 OF A 2





F.M.	16946	
A2	OF	A2



UNION

LOUGHEED'S