

Portion of 267.19 Acre Tract
allotted to Thomas Gray in the
Partition of the Rancho Las Camegas.

Portion of S.E. 1/4 Sec. 26 T.1S. R.14W. S.31N.

City Boundary

RF 76

Sec. 26
Sec. 35 T.1S. R.14W.

PICO STREET BLVD

Portion of N.E. 1/4 Sec. 35 T.1S. R.14W. S.31N.

STREET

CENTRAL ARLINGTON HEIGHTS
TRACT

46

FM 16995
A1 OF A9

Portion of SE 1/4 Sec 20 T.15. R.14W. S.B.M.

D15-259 D3291-151

BLVD.

6-108

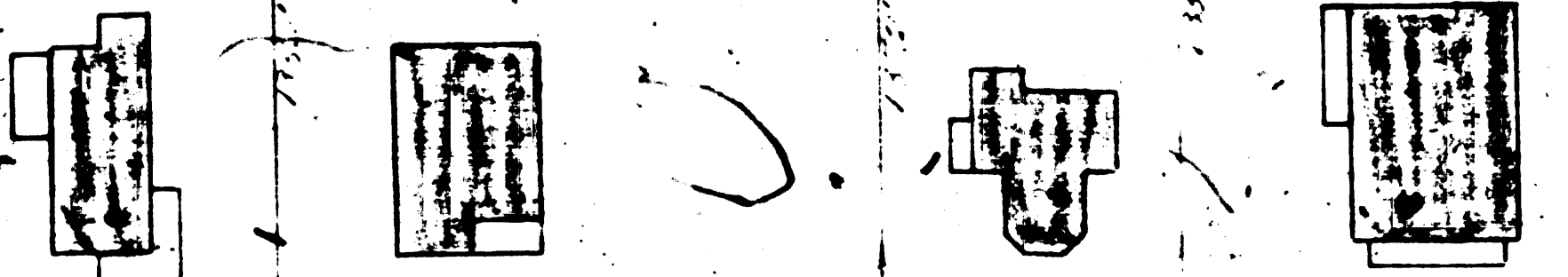
Portion of NE 1/4 Sec 35 T.15. R.14W. S.B.M.

STREET.

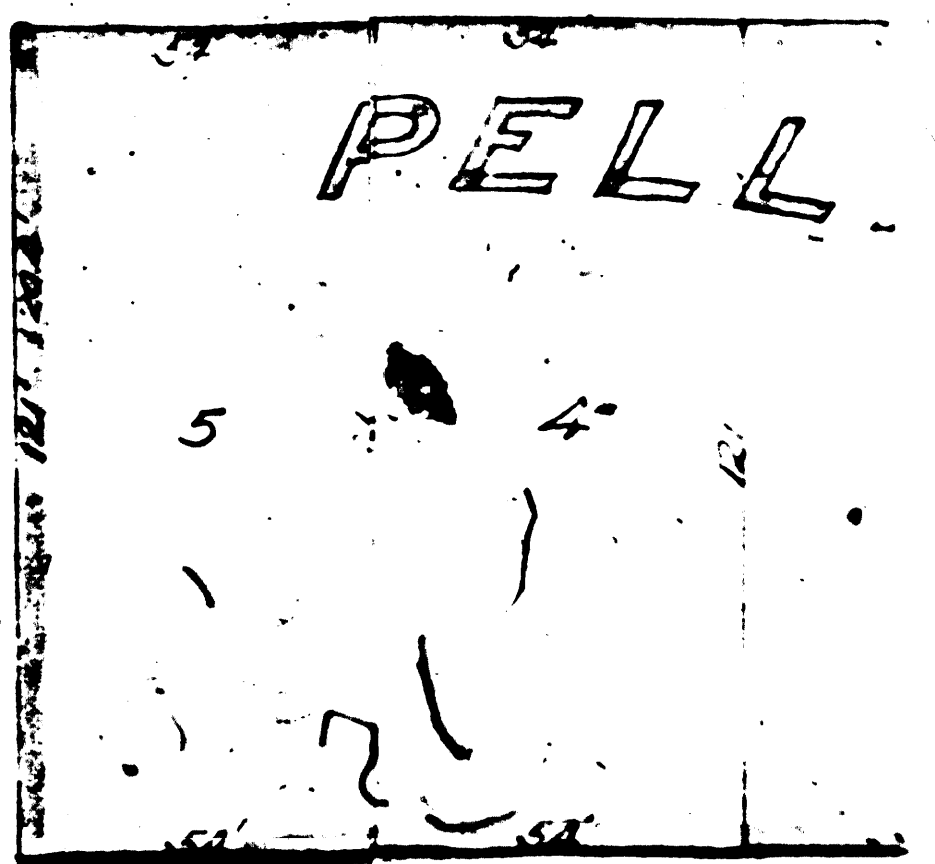
FM	1	6	9	9	5
A	2	OF	A	9	

AVENUE

Portion of S.W. 1/4 Sec 25 T.1S. R.14W.S.B.M.



GAHUNGA ST.



T.1S. R.14W. Sec 25 Sec 36

WESTERN

Portion of N.W. 1/4 Sec 36 T.1S. R.14W.S.B.M.

HARVARD AVE

WASHINGTON ST and PIC

FM 1,6995
A 3 OF A 9

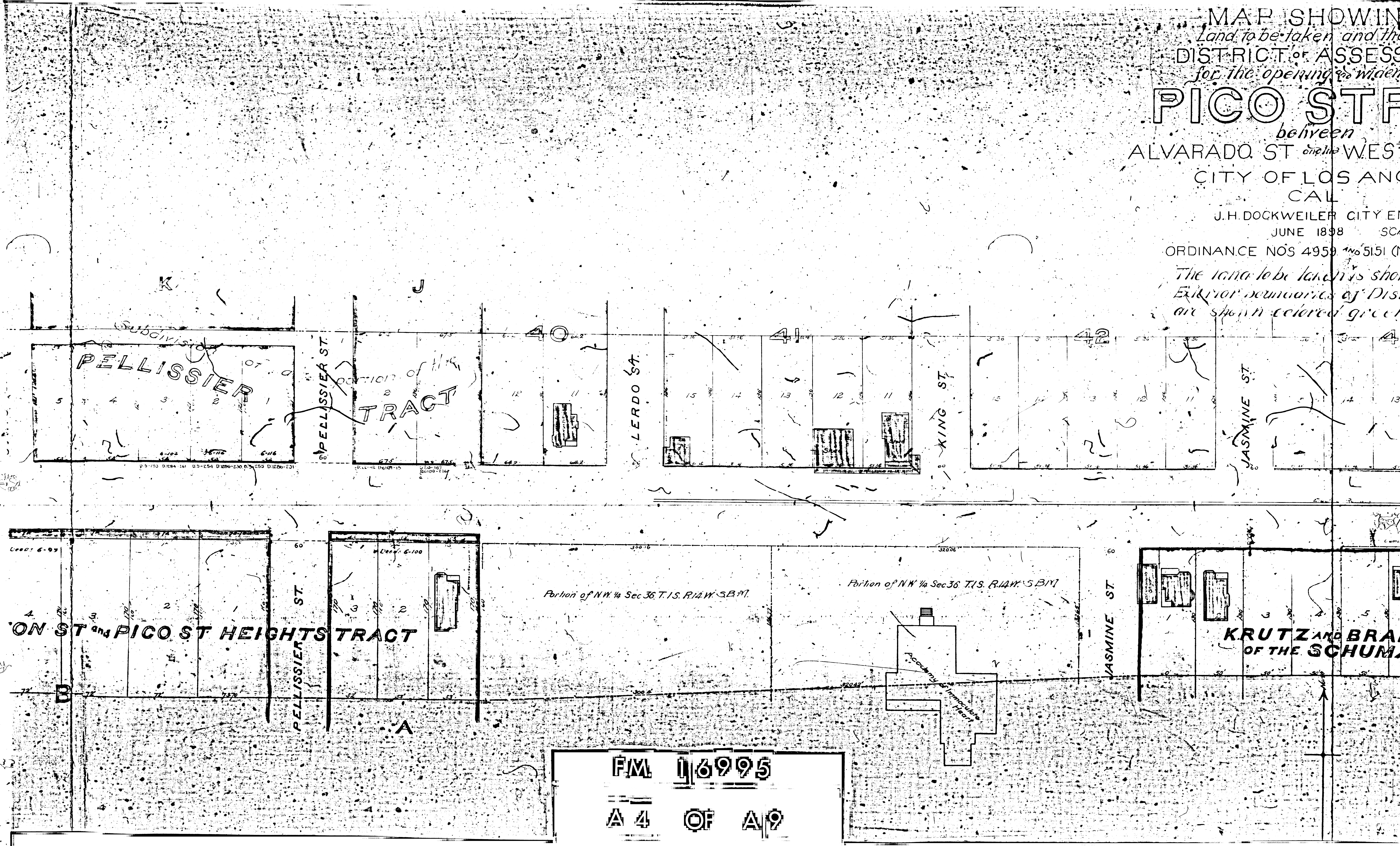
MAP SHOWING
Land to be taken and the
DISTRICT OF ASSESS
for the opening and widening

PICO STR

between
ALVARADO ST and the WEST
CITY OF LOS ANGELES
CALIFORNIA

J.H. DOCKWEILER CITY ENGINEER
JUNE 1898 SCA
ORDINANCE NOS 4959 AND 5151 (N)

The land to be taken is shown
Exterior boundaries of District
are shown colored green



FM 16995
A 4 OF A 9

SHOWING
 taken and the
 OF ASSESSMENT
 widening of
STREET
 five
 on the WEST CITY LINE
 LOS ANGELES
 CAL

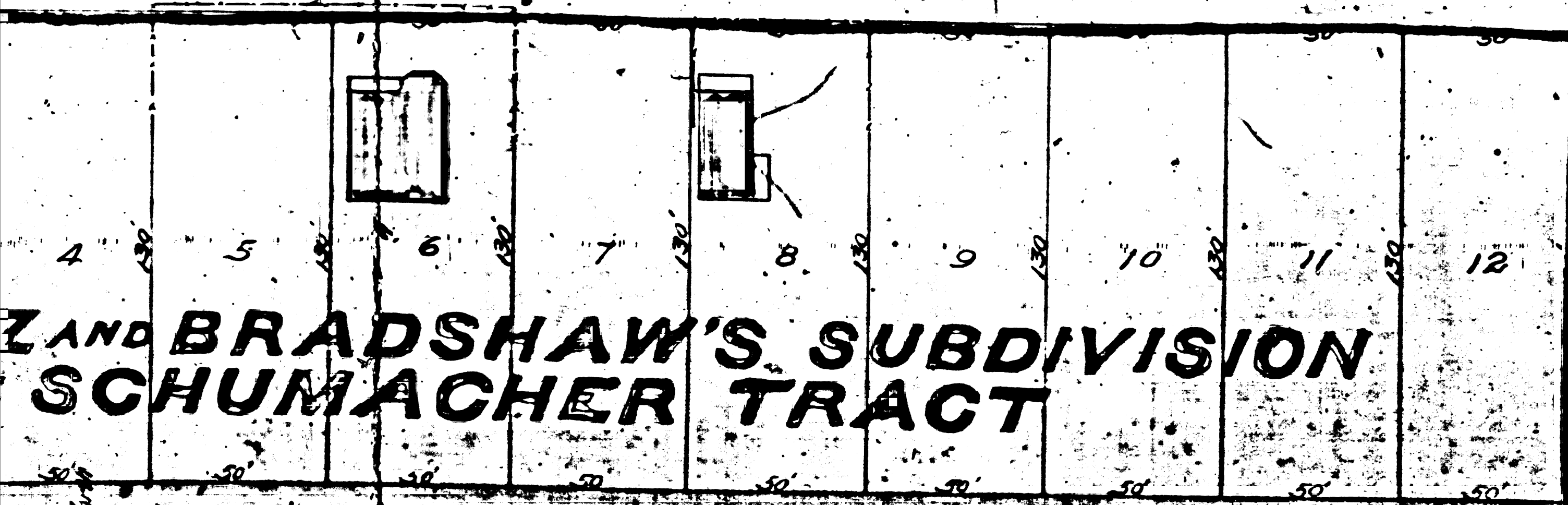
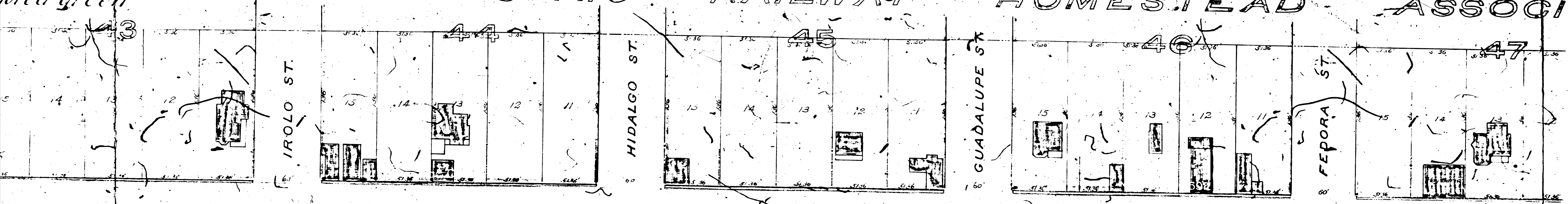
FILED CITY ENGINEER
 E 1898 SCALE 1 INCH = 50 FEET
 4959 No 5151 (NEW SERIES)

Areas shown colored red
 are of District of Assessment
 colored green

Aug 19 08

All proceedings completed
 under Ord. 4, 2059 + S.S. 111
 Location - 15 blocks on T. 13 N. 27 E.
 For City of Los Angeles

ELECTRIC RAILWAY HOMESTEAD ASSOCI



**Z AND BRADSHAW'S SUBDIVISION
 SCHUMACHER TRACT**

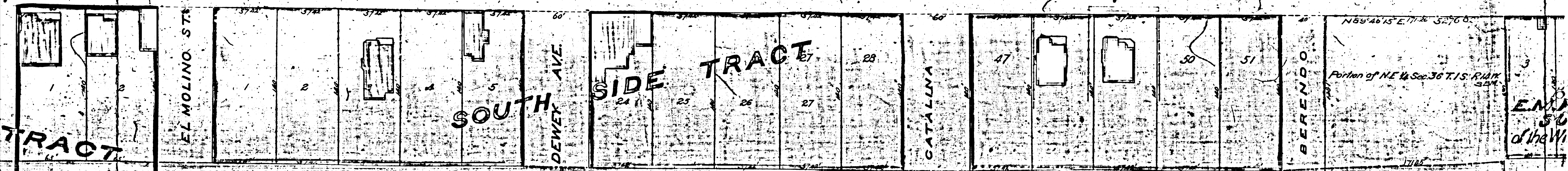
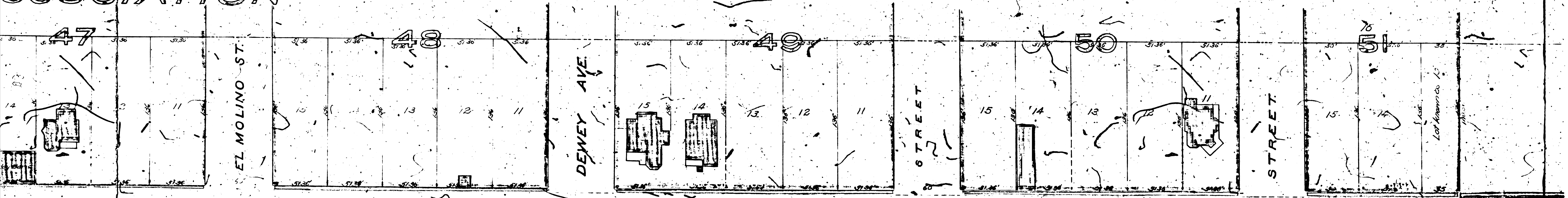
Portion of N.E. 1/4 Sec. 36 T. 13. R. 11 W. S.B.M.
**ROSEDALE
 CEMETERY**



ARMY HOMESTEAD TRACT

**FM 16995
 A 5 OF A 9**

SSOCIATION



F.M. 116995
 A 6 OF A 9

EMA
 510
 of the W

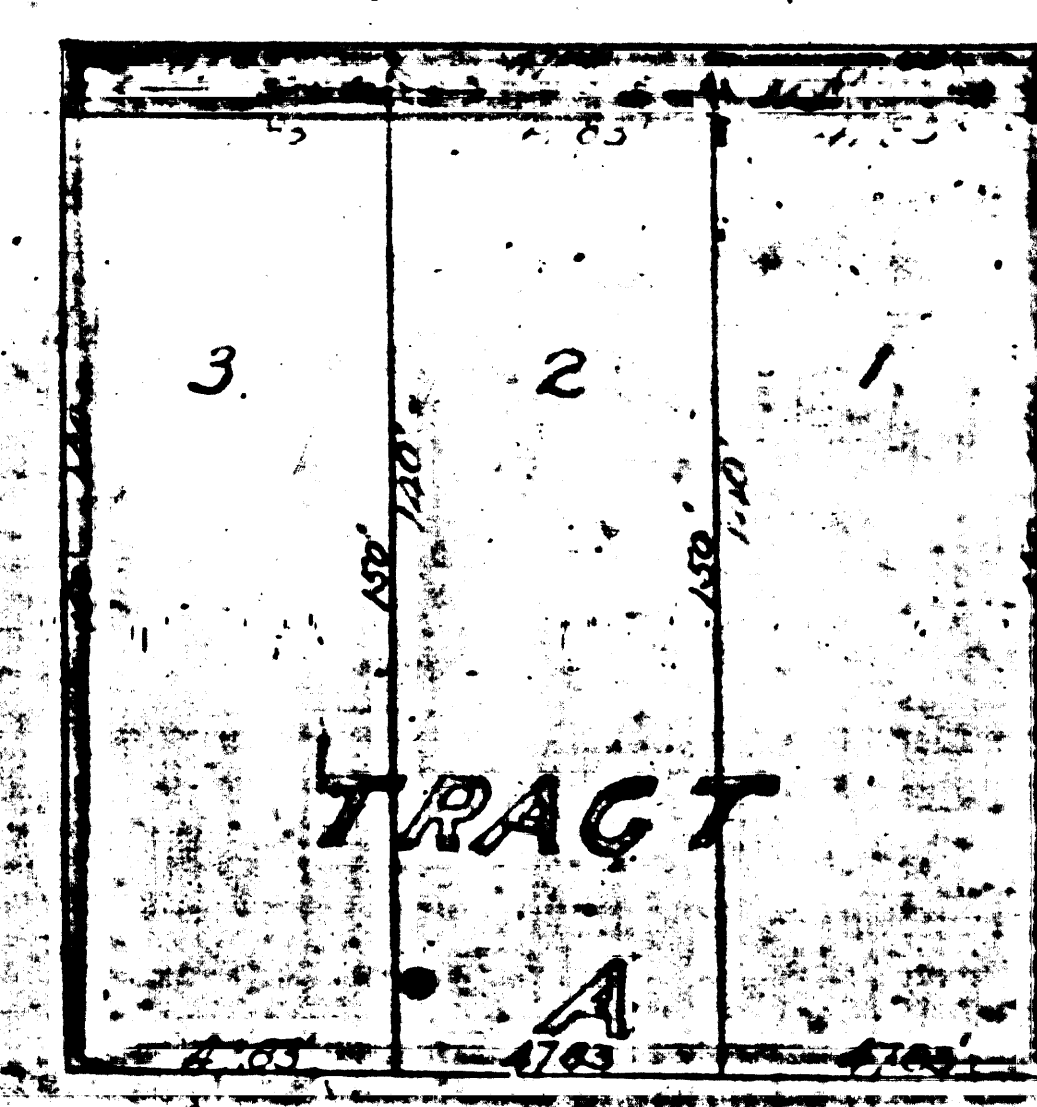
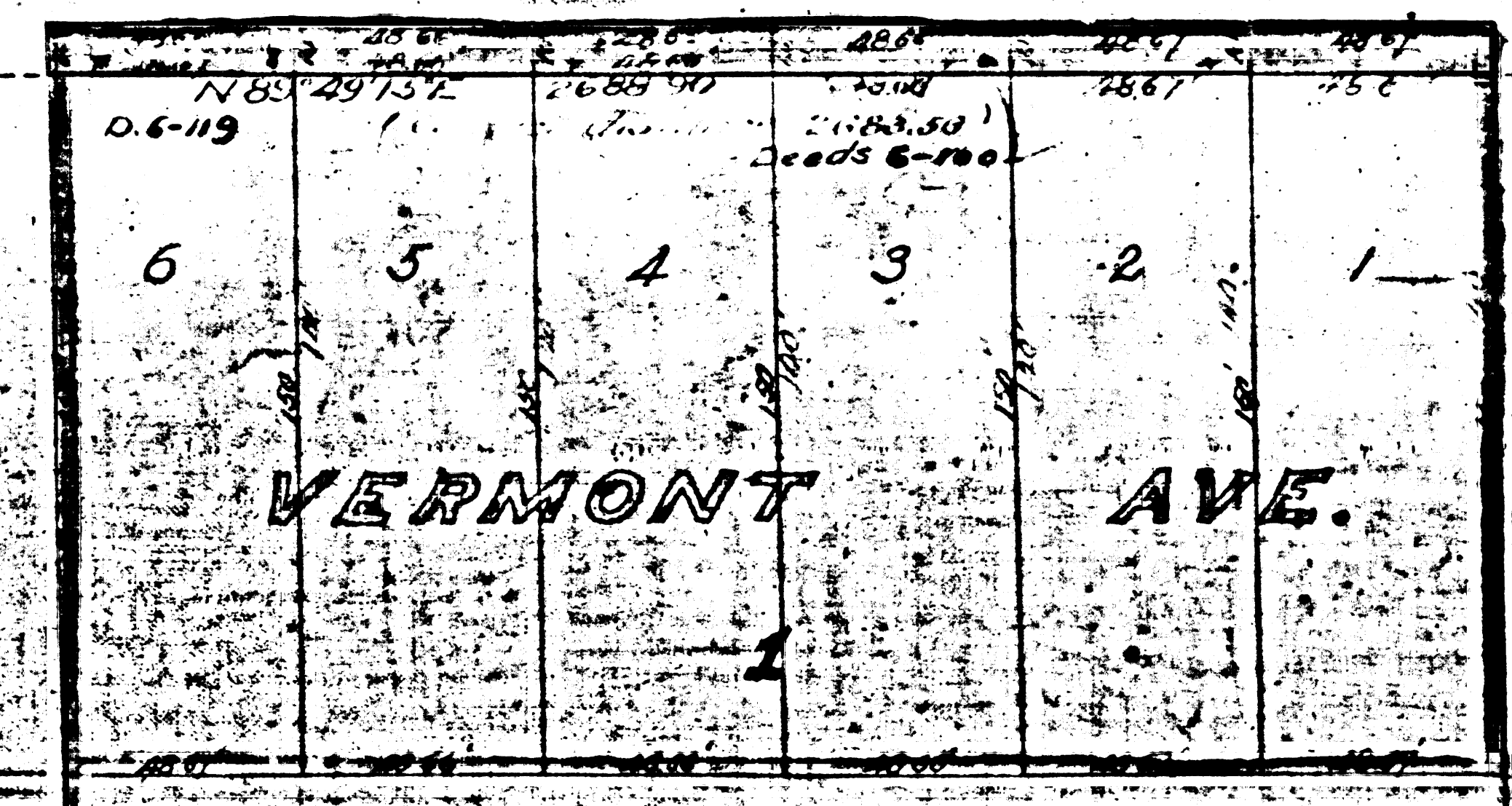
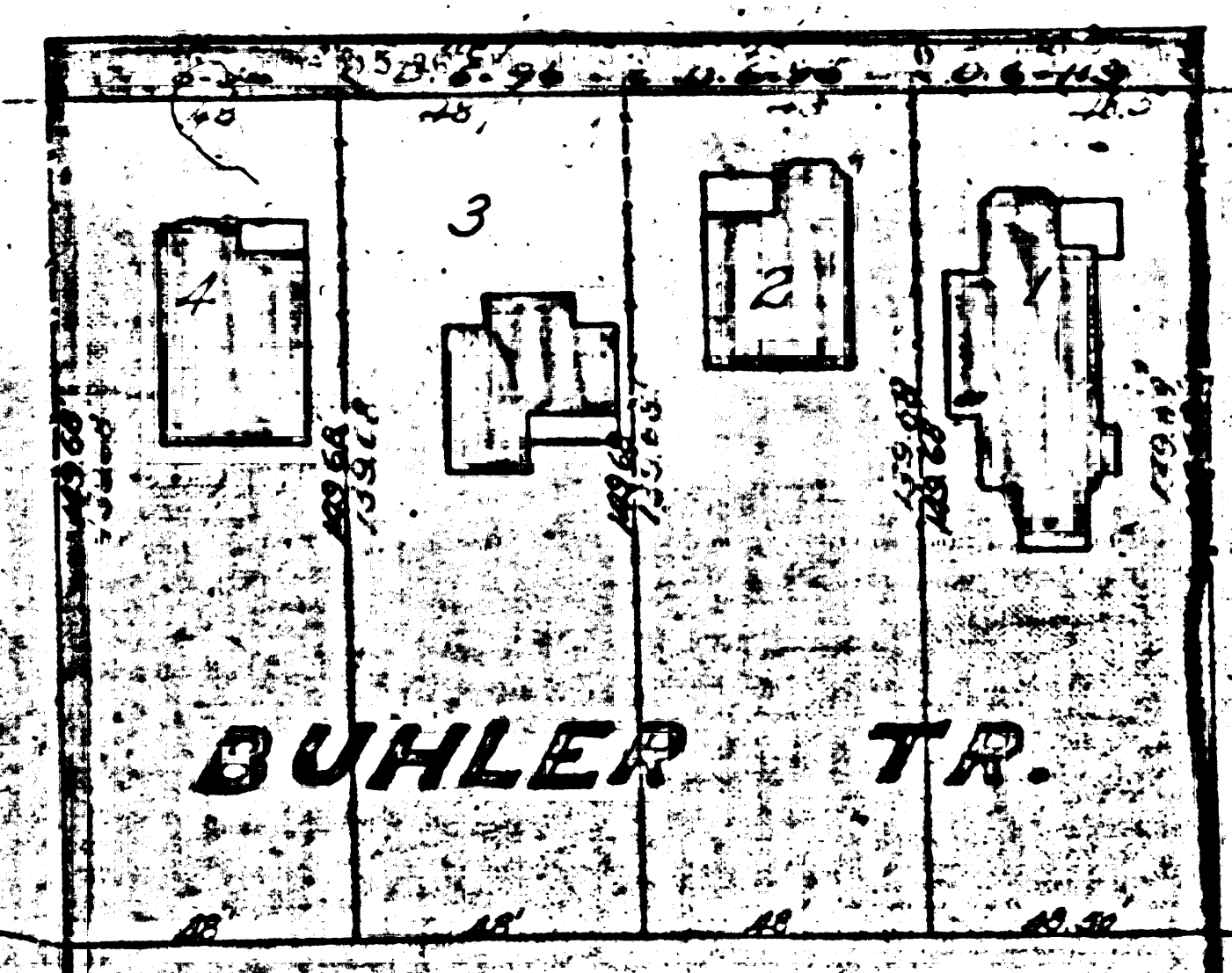
Portion of S.E. 1/4 Sec. 25 T.15 R.14 W.5.B.M.

AVET. 14 W.
T. 13 W.

Portion of SW 1/4 Sec 30 T.15. R.13 W. S.B.M.

M 156-918-111

See book 2...
Map 6-110... Paper 4-1410



NEW HAMPSHIRE AVE

VERMONT

REID ST.

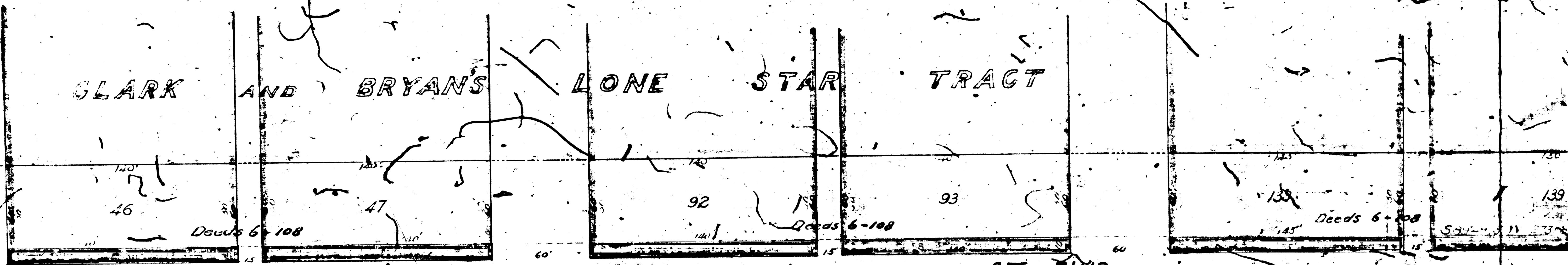
MILLARD AVE.

PACIFIC AVE.

FM 16995

A7 OF A9

CLARK AND BRYANS LONE STAR TRACT

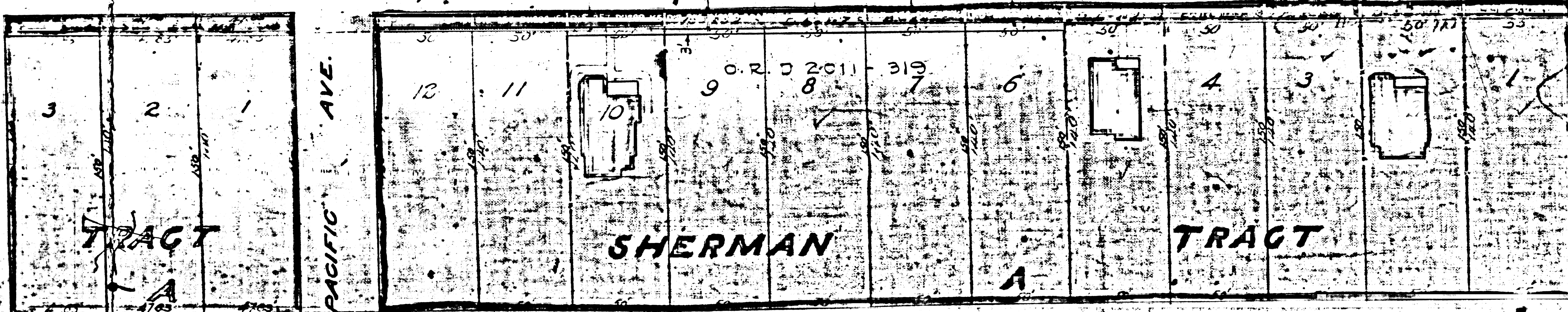


PICO

ST. BLVD.

Pacific Railway

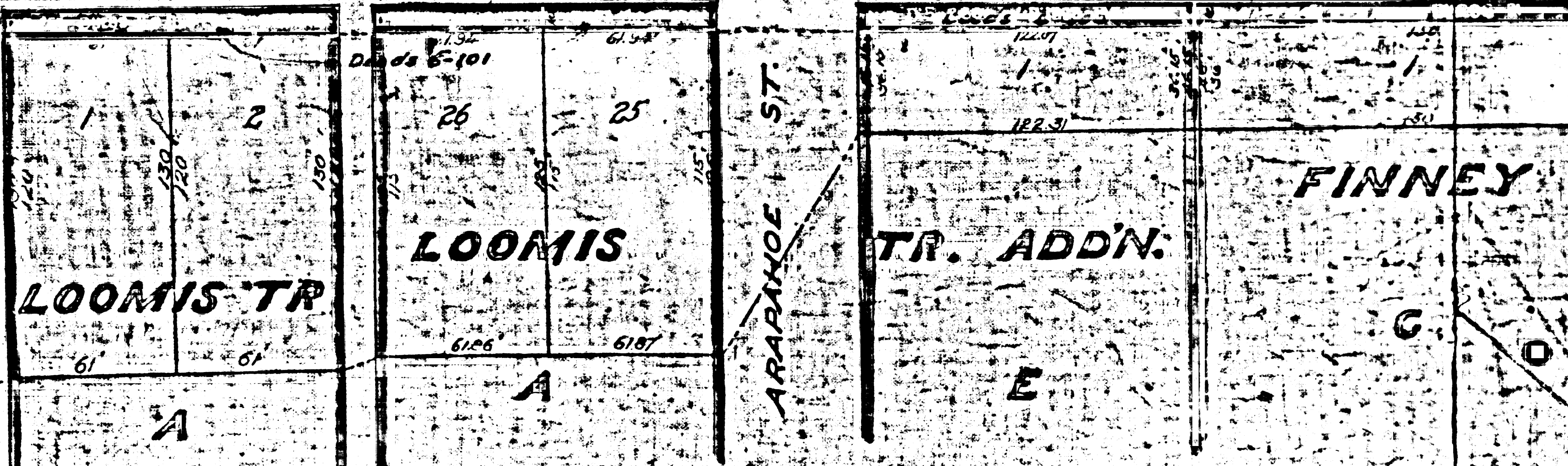
RF 76



PACIFIC AVE.

SHERMAN TRACT

MAGNOLIA AVE.



LOOMIS TR

LOOMIS

TR. ADD'N.

FINNEY

ARAPAHOE ST.

FM 16995

A8 OF A9

LONE STAR TRACT

92

93

139

139

HOOPER ST

PICO

A

ST. BLVD.

Electric Railway

ET. 76

MAGNOLIA AVE.

LOOMIS TR

A

LOOMIS

A

ARABIA ST

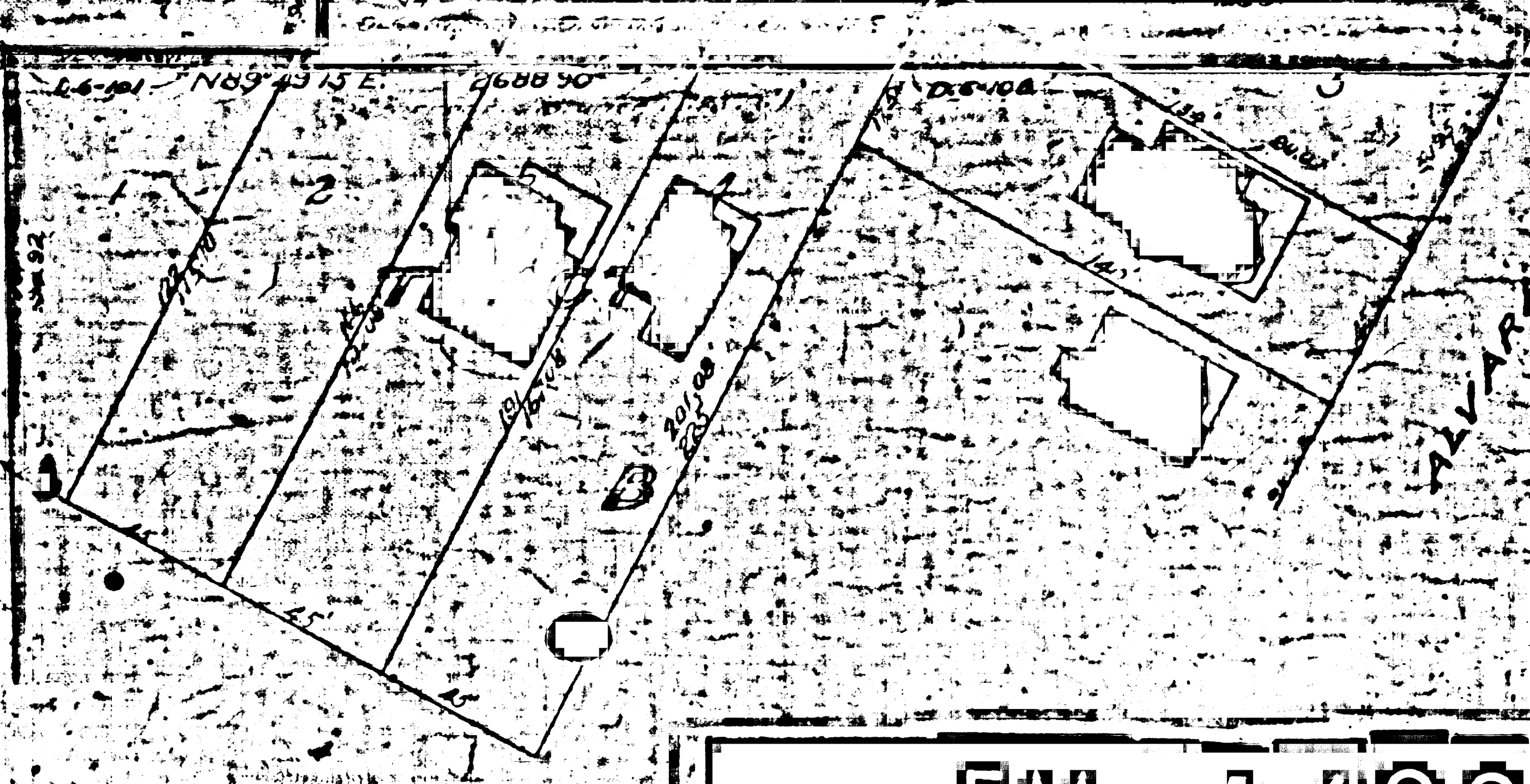
TR. ADDN.

E

FINNEY

C

HOOPER ST



FM 116995

A9 OF A9