

BROADWAY

TENTH

BLOCK A
JOHN G. DOWNEY TRACT

ALLEY

NINTH STREET

BLOCK 51
HUBER

EIGHTH

SPRING

STREET

HANNIBELL AND DENKER TRACT

Street Right of Way

BLOCK 50
BOTILLER TRACT

TRACT
BLOCK 23

NINTH STREET

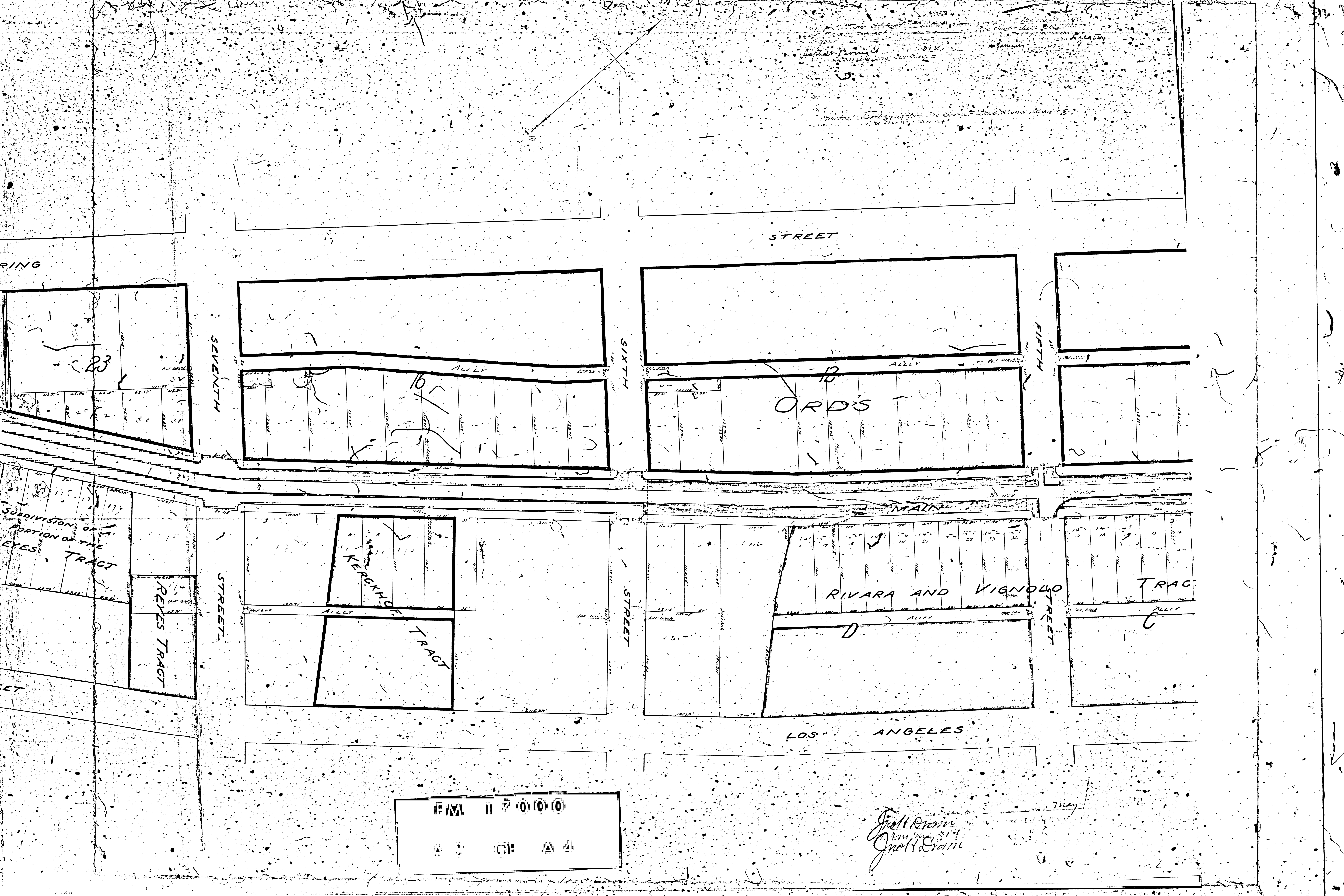
RESUBDIVISION
WIDOW BOYD
OF THE TRACT

SUBDIVISION
PORTION OF
REYES TRACT

LOS ANGELES

STREET

FM 17000
A1 OF A4



STREET

SEVENTH STREET

SIXTH STREET

FIFTH STREET

MAIN STREET

STREET

STREET

LOS ANGELES

RING

23

16

12
ORD'S

SUBDIVISION OF A
PORTION OF THE
EYES TRACT

REYES TRACT

KERCKHOFF

TRACT

RIVARA AND VIGNOLO

TRACT

1/4" = 10' 0" (10' 0")
1/8" = 5' 0" (5' 0")
1/16" = 2' 6" (2' 6")

J. M. ...
J. M. ...

F.M. 11 7 0 0 0
A B C A 4

SPRING

ORIGINAL
H.W. HELLMAN
TRACT

SURVEY

CENTER PLACE

FIFTH STREET

FOURTH STREET

THIRD STREET

SECOND STREET

VOLVO STREET

TRACT

SUBDIVISION OF THE BAKER TRACT

THIRD STREET

THIRD STREET

STREET

WINSTON STREET

STREET

LOS ANGELES

F.M. 117010
A 4 OF A 4

STREET

CENTER PLACE

CENTER PLACE

BULLARD STREET

122 121 120 119 118 117 116 115 114 113 112 111 110 109 108 107 106 105 104 103 102 101 100 99 98 97 96 95 94 93 92 91 90 89 88 87 86 85 84 83 82 81 80 79 78 77 76 75 74 73 72 71 70 69 68 67 66 65 64 63 62 61 60 59 58 57 56 55 54 53 52 51 50 49 48 47 46 45 44 43 42 41 40 39 38 37 36 35 34 33 32 31 30 29 28 27 26 25 24 23 22 21 20 19 18 17 16 15 14 13 12 11 10 9 8 7 6 5 4 3 2 1

STREET

STREET

REQUENA STREET

STREET

LOS ANGELES