

TENTH STREET

BROADWAY

BLOCK A

JOHN G. DOWNEY TRACT

NINTH STREET

BLOCK 51

HUBER

BLOCK 24

TRACT

MAIN

EIGHTH STREET

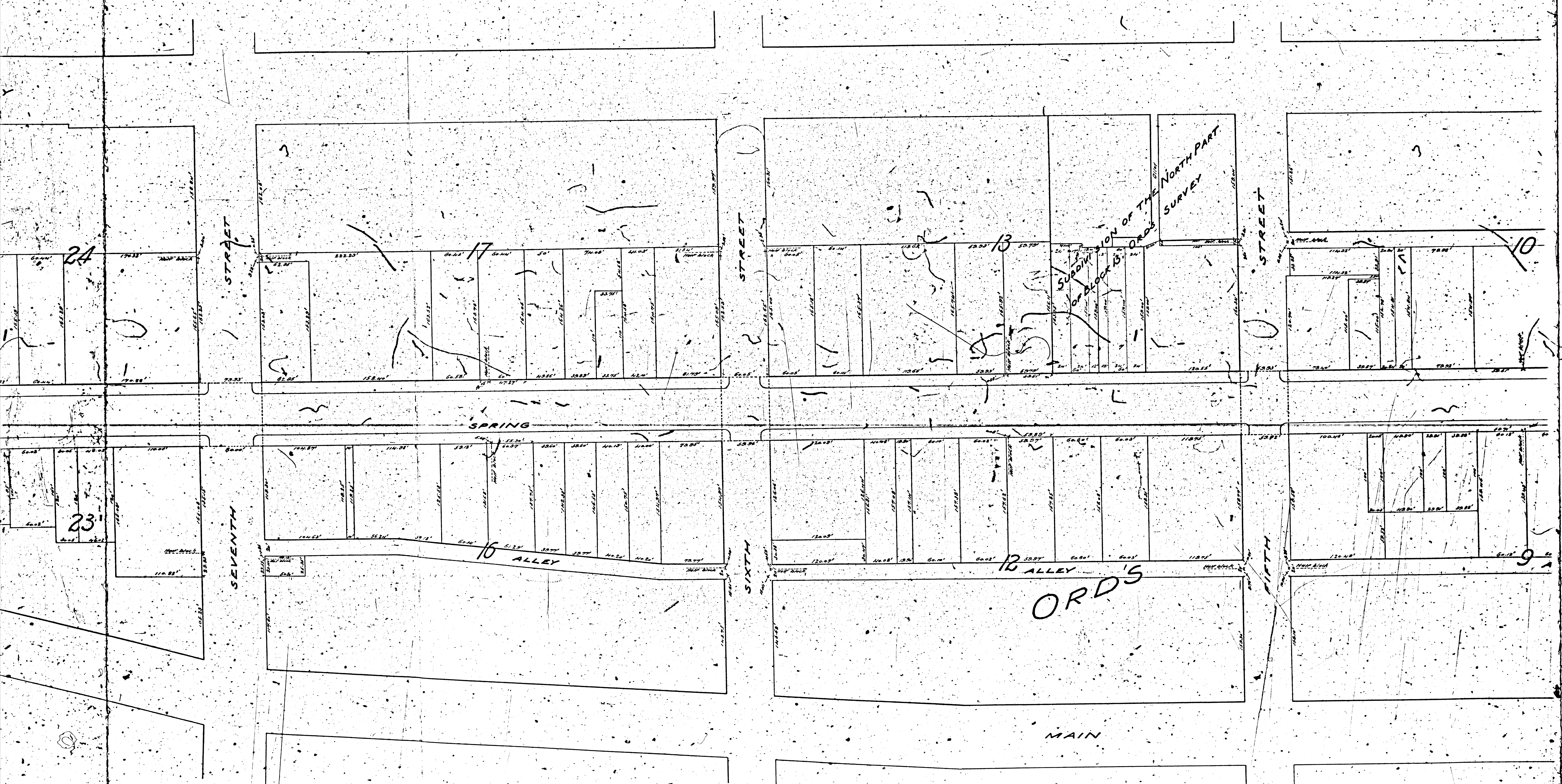
BLOCK 50

BLOCK 23

STREET

PLAT 117 OF 111
A 1 OF A 1

FINAL 11/7/10/11
A 2 OF A 4



SEVENTH STREET

SIXTH STREET

FIFTH STREET

SPRING ALLEY

16 ALLEY

12 ALLEY

ORDS

MAIN

24

17

13

10

23

16

12

9

SUBDIVISION OF THE NORTH PART OF BLOCK 15, ORDS SURVEY

F.M. 11 7 10 11
A 4 OF A 4

From the Southeast
to the Southwest
of the North
Street
The distance of feet
is shown on each
line of the blocks
The same as the
lines of the blocks

