

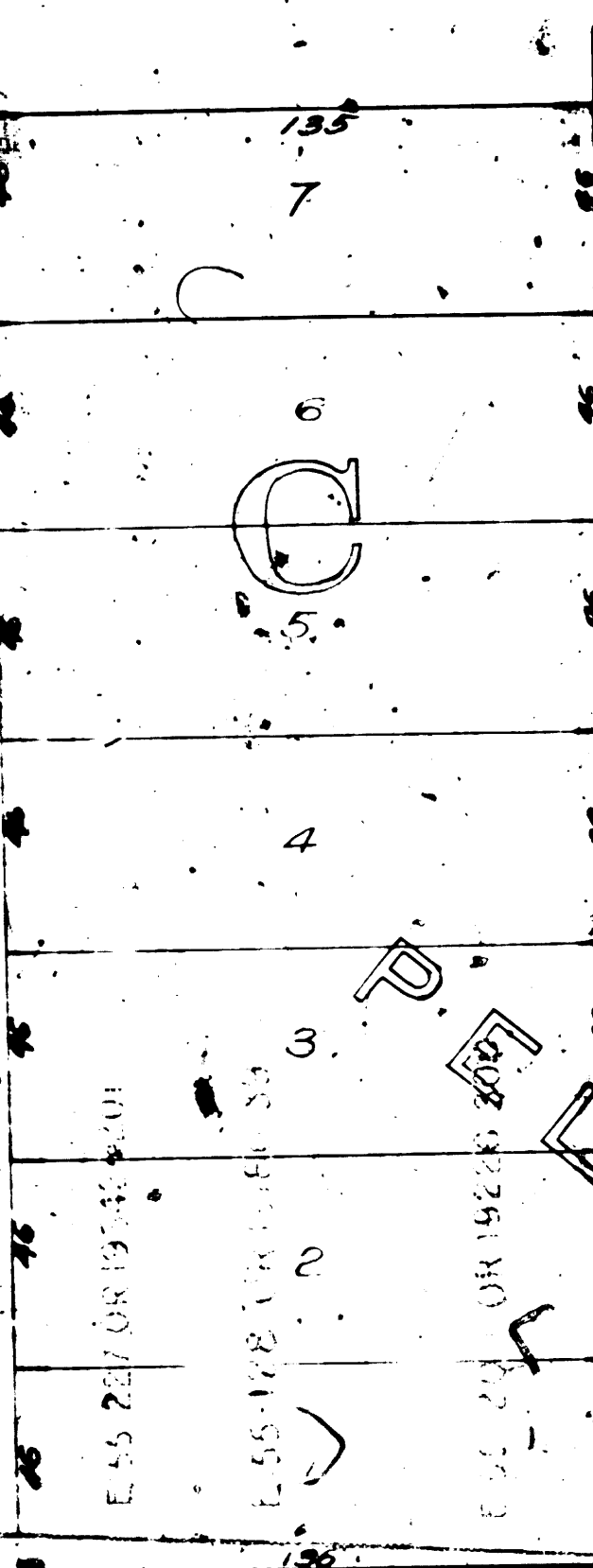
Part of the N<sup>1</sup>/<sub>2</sub> of S.W. 1/4 of Section 25, T1S, R14W, S.B.M.

WESTERN AVE.

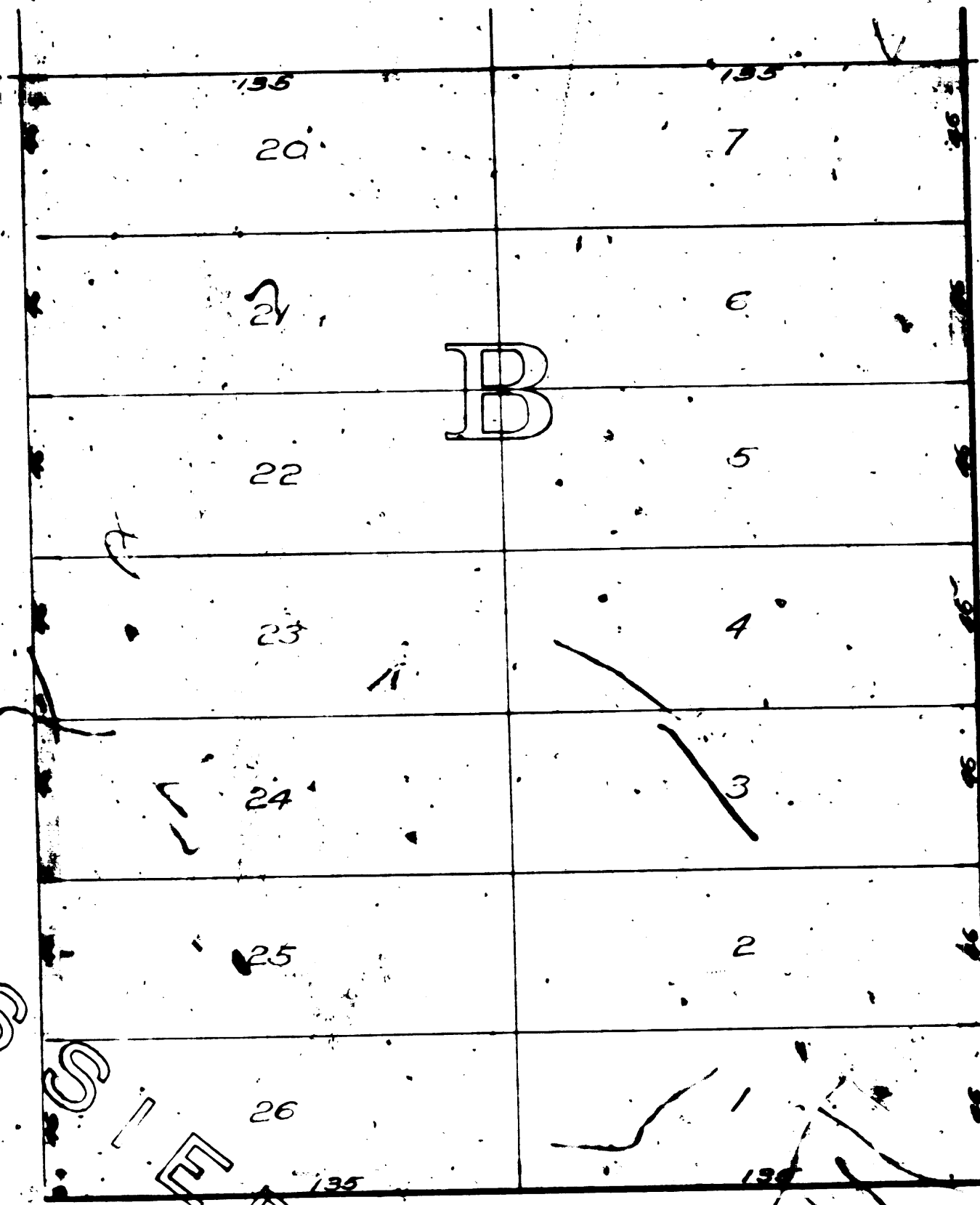
C.F. 2180-2

C.F. 2180-2

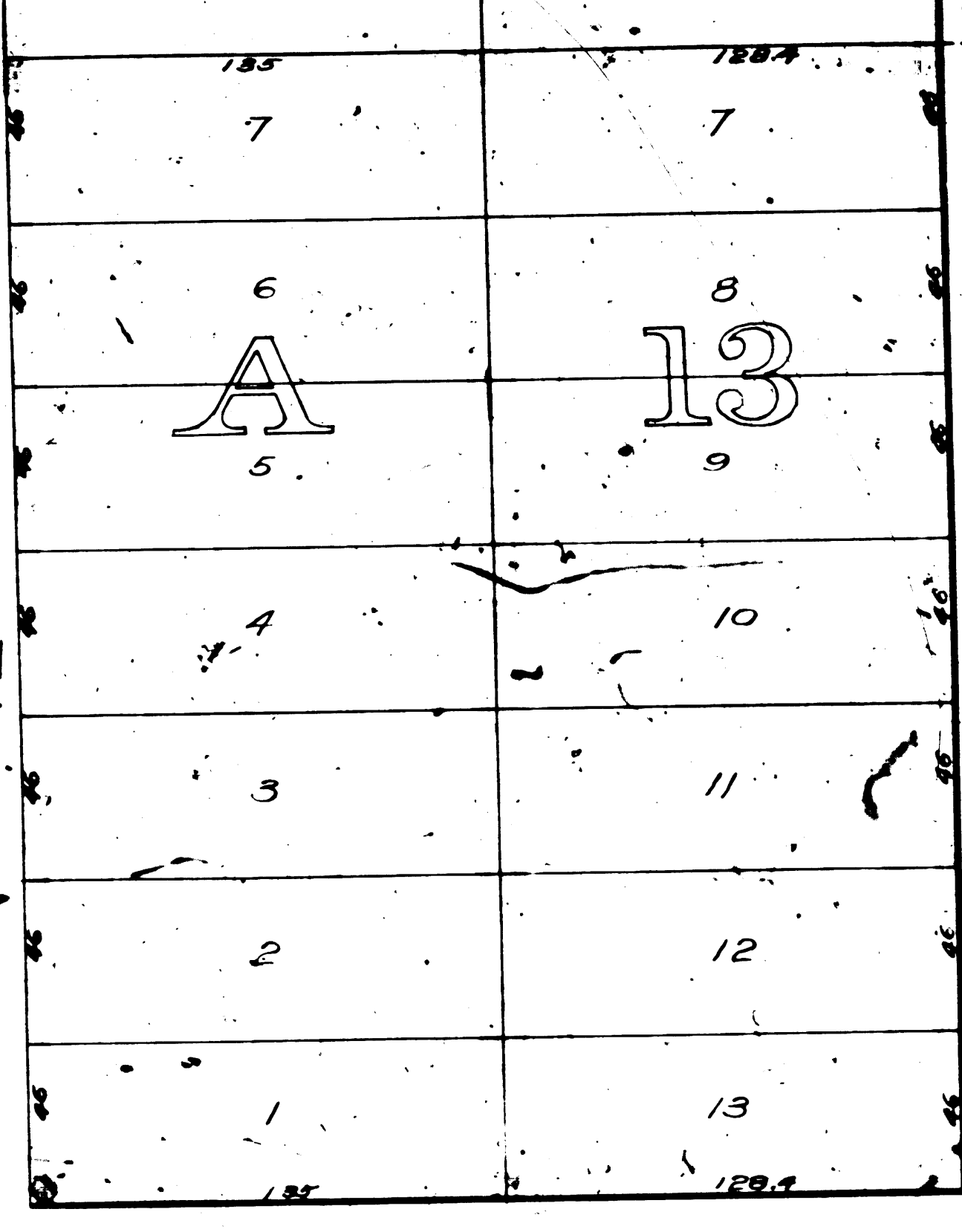
OLYMPIC



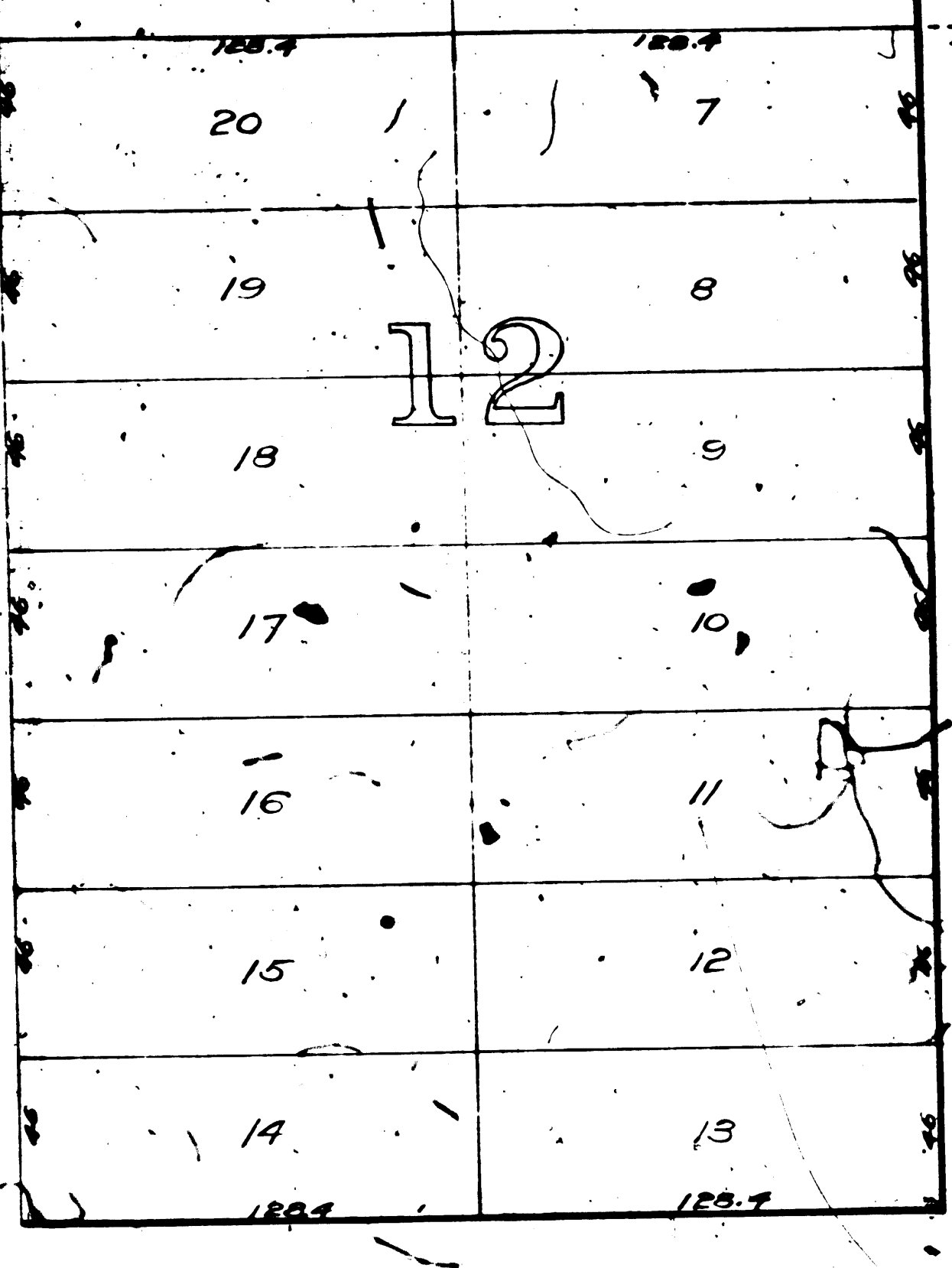
HILL ST.



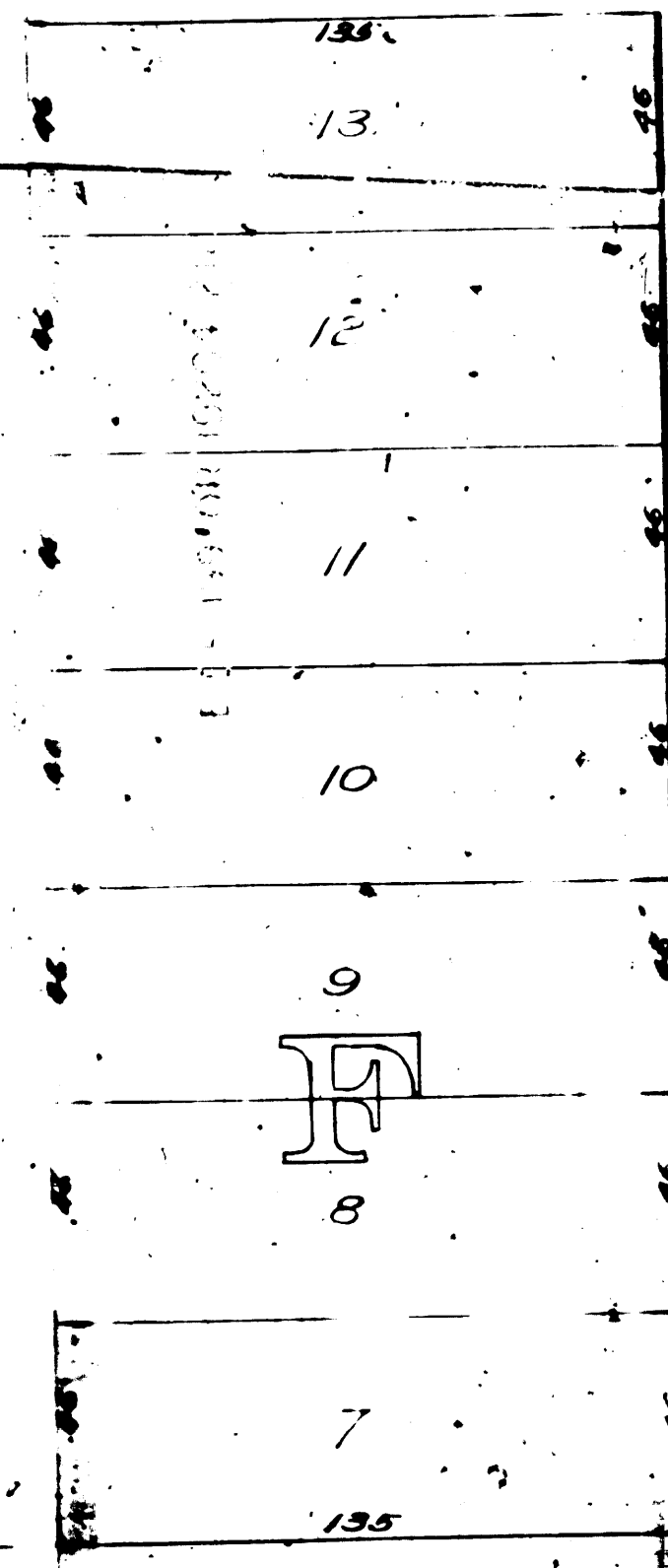
BAY ST.



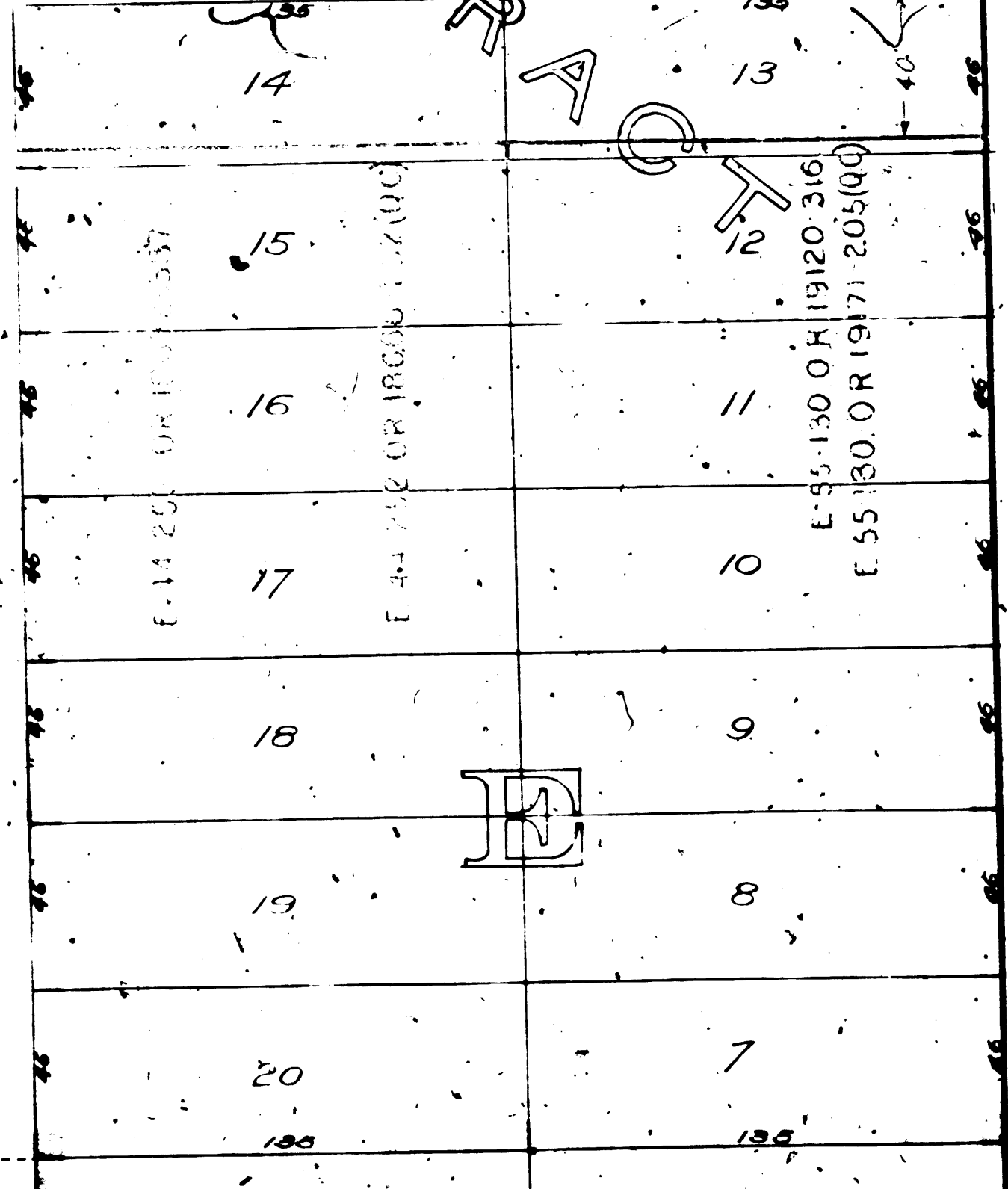
ELM ST.



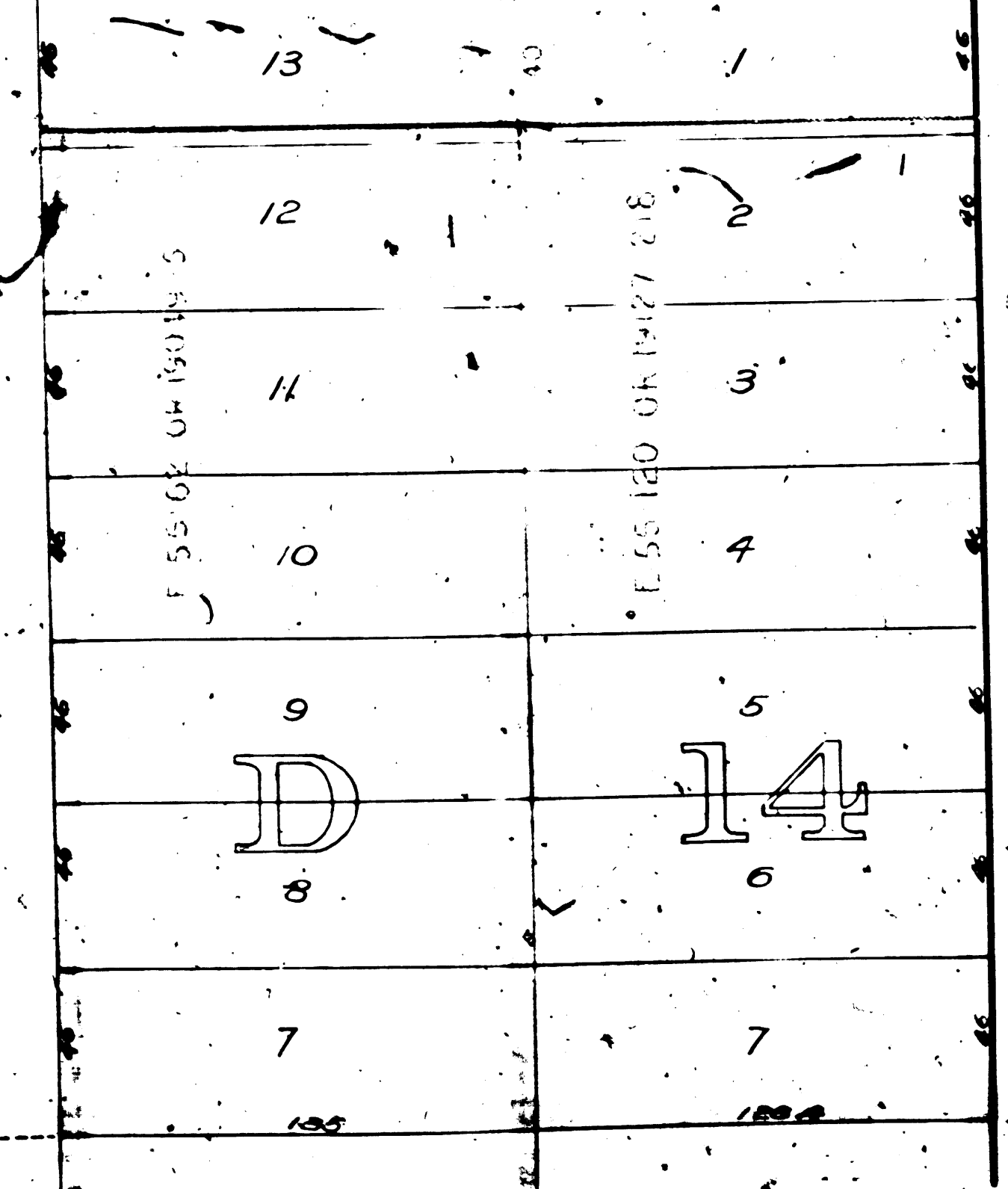
DR. ST.



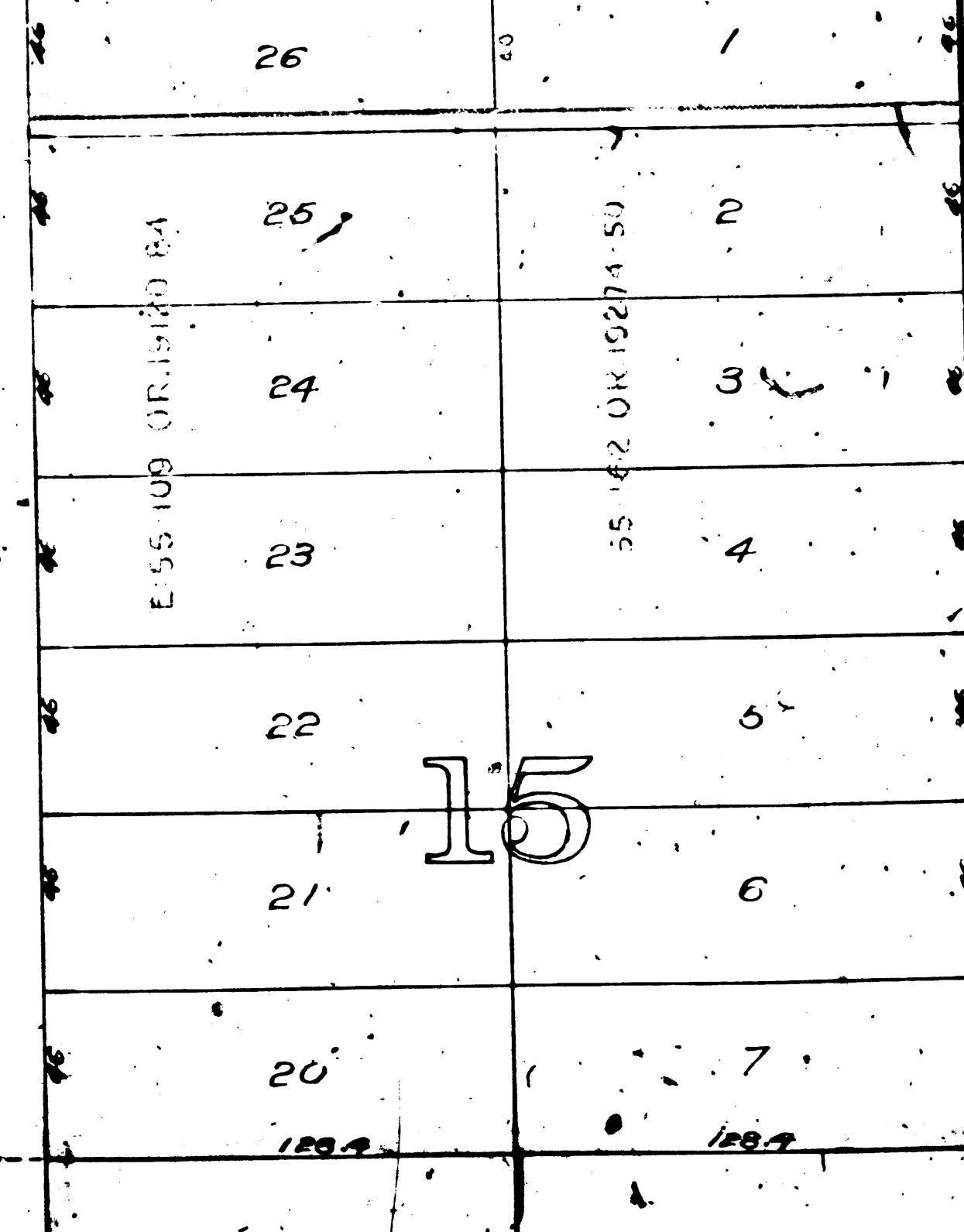
CAHUNGA ST.



PELLISSIER ST.



LERDO ST.



KING ST.

FM 17003

A 1 OF A 4

Showing District  
For the

The West Patent Boundary

Ordinary

Green tint show



FM 17003

A2 OF A4

OLYMPIC BV.  
Map

District of Assessment and Land to be taken  
For the opening and extending of  
**TENTH STREET**

FROM  
Boundary Line of the City of Los Angeles to Western Avenue

City of Los Angeles Cal.  
J.H. Dockweiler City Engineer  
July 1898

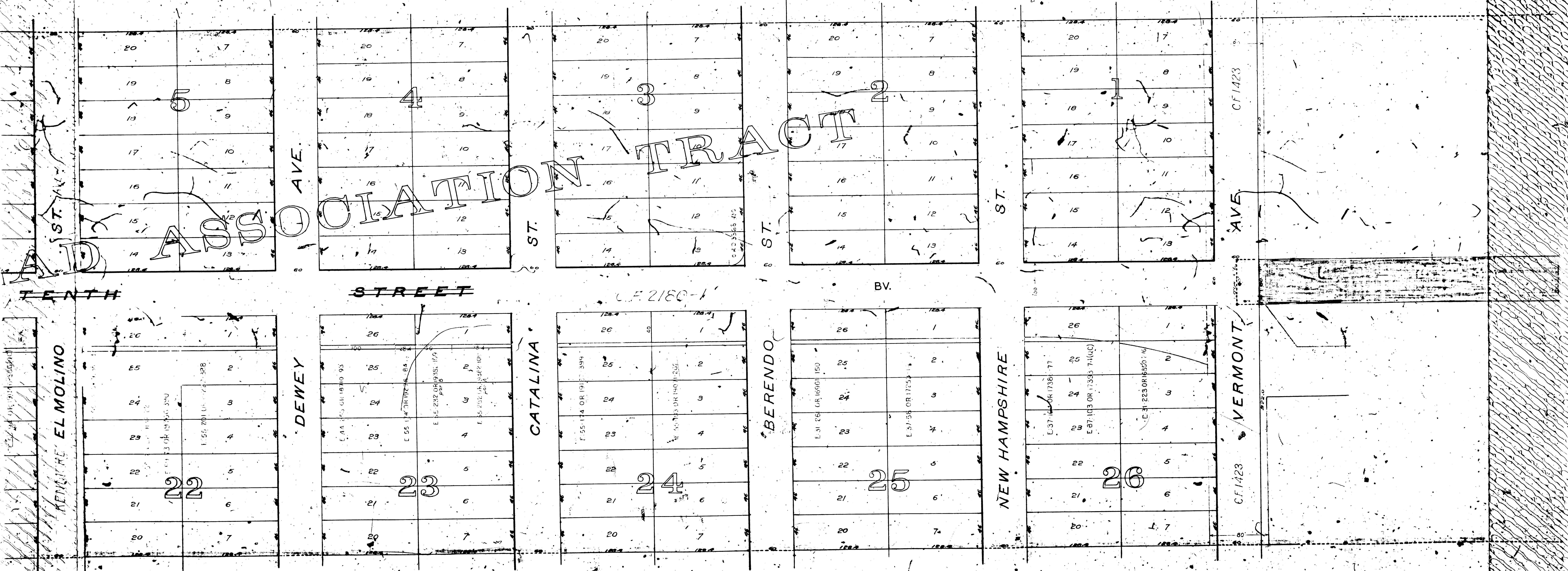
Scale 1 inch = 60 feet

Ordinances No. 5008 and 5189 (New Series)



*See map of 1898  
City of Los Angeles  
City Engineer  
July 1898*

Notes:  
Red tint shows land to be taken  
Green tint shows exterior boundaries of district of assessment.



F.M. 17003

A 3 OF A 4

*Part of the N½ of SW¼ of Section 30, T1S, R13W*

F.M. 11 7 (0) 3  
A 4 (C) A 4