

MAP
 SHOWING LAND TO BE TAKEN AND DISTRICT OF ASSESSMENT
 FOR THE OPENING OF

GLESS STREET

FROM THE
 NORTHERLY LINE OF Cummings First Street Tract to a line, which said
 line intersects the Easterly Line of Gless Street extended Northerly at
 a distance of 233.19 feet Northerly from the North line of said tract,
 and the Westerly Line of Gless Street extended Northerly
 at a distance of 335.99 feet, from the said North line of said Tract.

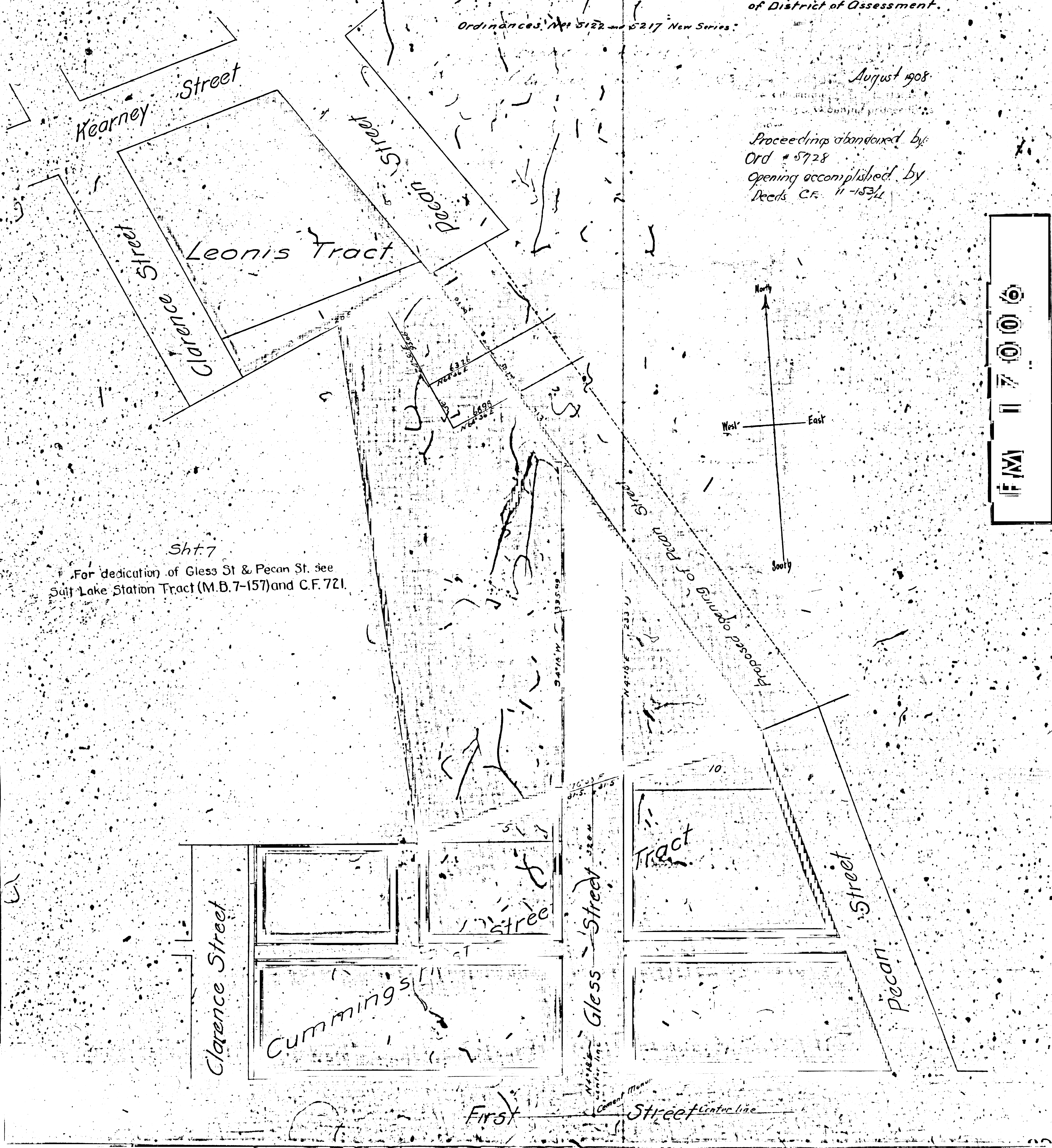
CITY OF LOS ANGELES, Cal.
 J.H. Dockweiler, City Engineer - July 1898
 Scale 60 feet = 1 inch.

Note: Red Color shows land to be taken
 Green Color shows exterior boundaries
 of District of Assessment.

Ordinances No. 5122 and 5217 New Series.

August 1908

Proceedings abandoned by
 Ord # 5728
 Opening accomplished by
 Deeds C.F. 11-1534



Sht. 7
 For dedication of Gless St & Pecan St. see
 Salt Lake Station Tract (M.B. 7-157) and C.F. 721.

1700
 FEET