

Portion of 26<sup>th</sup> 1/4 Acre Tract  
allotted to Thomas Gray in the  
Partition of the Rancho Las Cienegas.

Portion of S.E. 1/4 Sec. 26 T. 1 S. R. 14 W. S. 5 M

Sec. 26 T. 1 S. R. 14 W.

Portion of N.E. 1/4 Sec. 35 T. 1 S. R. 14 W. S. 5 M

PICO STREET BLVD.

IMMEDIATE HEIGHTS

STREET

FVA 17026

AT OF AIO

223273  
Portion of SE 1/4 Sec. 26 T.1S. R.14W. S.B.M.

BLVD

30'  
STREET

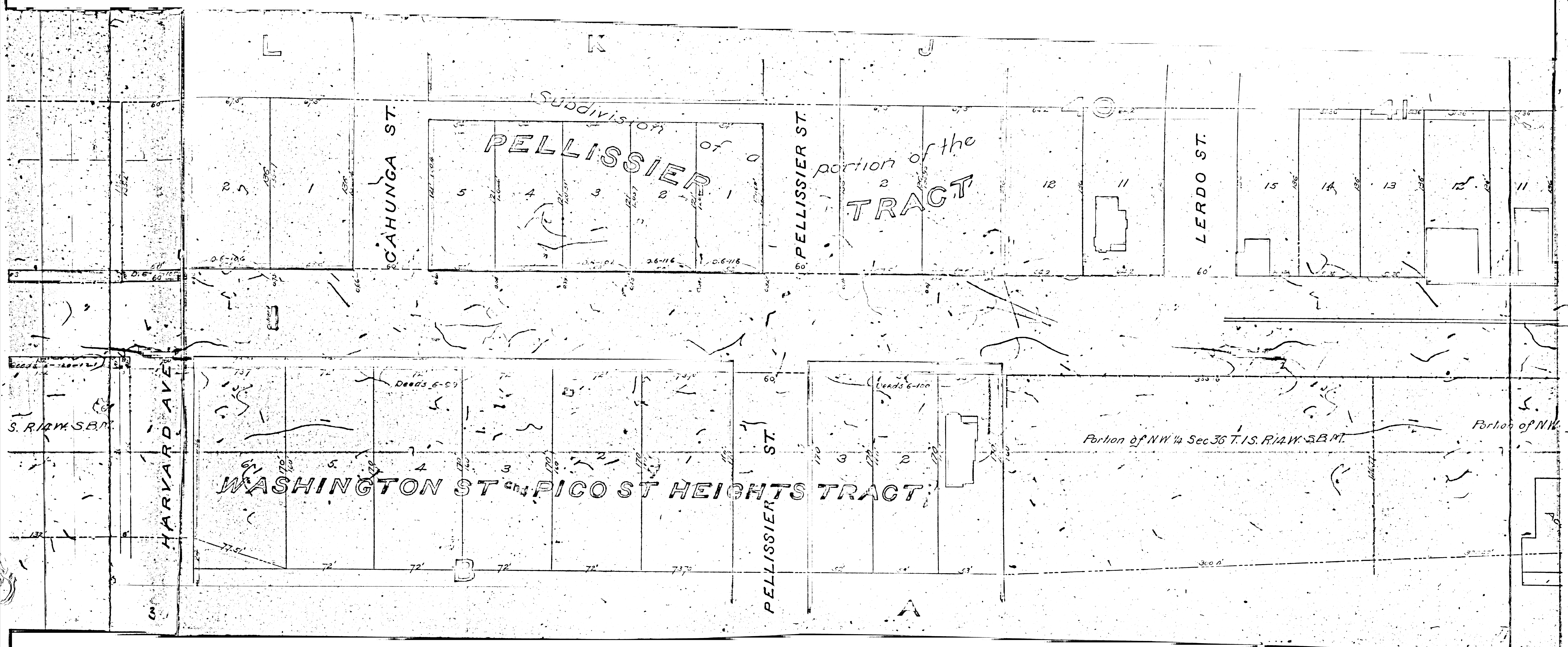
Deeds - 15 - 108

Portion of NE 1/4 Sec. 35 T.1S. R.14W. S.B.M.

F/M 17026

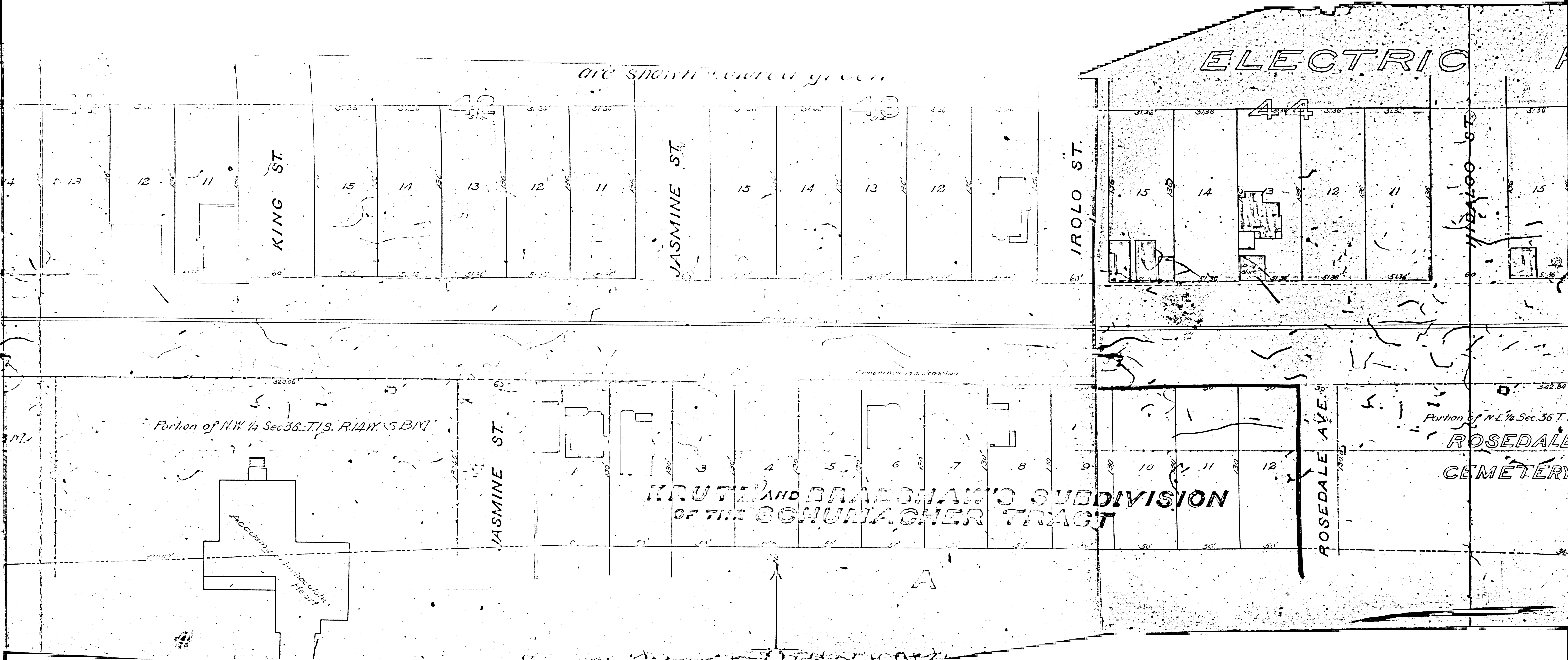
A 2 OF A 10





F.M. 17026

A4 OF A10



all shown in green

ELECTRIC

KING ST.

JASMINE ST.

IROLO ST.

JASMINE ST.

ROSEDALE AVE.

Portion of NW 1/4 Sec 36 T.15. R.14W. S.B.M.

Portion of NE 1/4 Sec 36 T.15. R.14W. S.B.M.

ROSEDALE CEMETERY

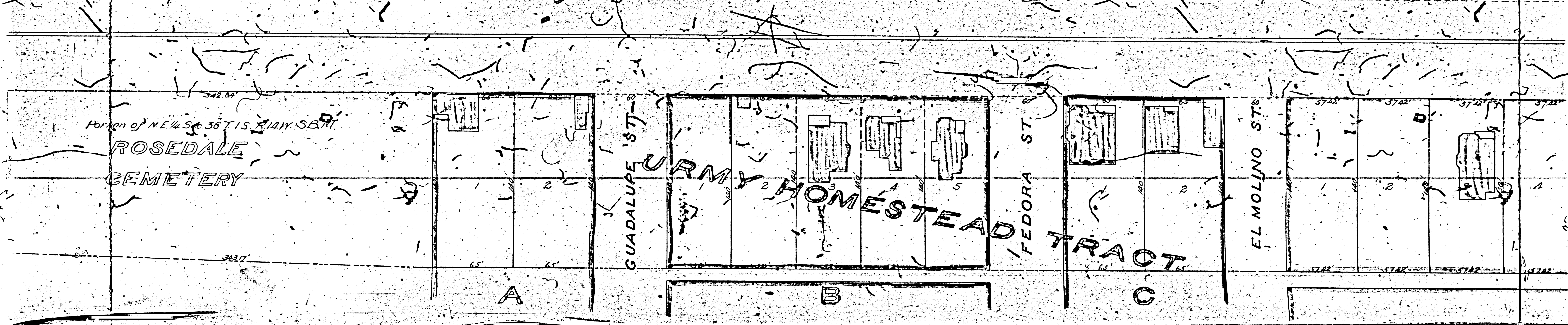
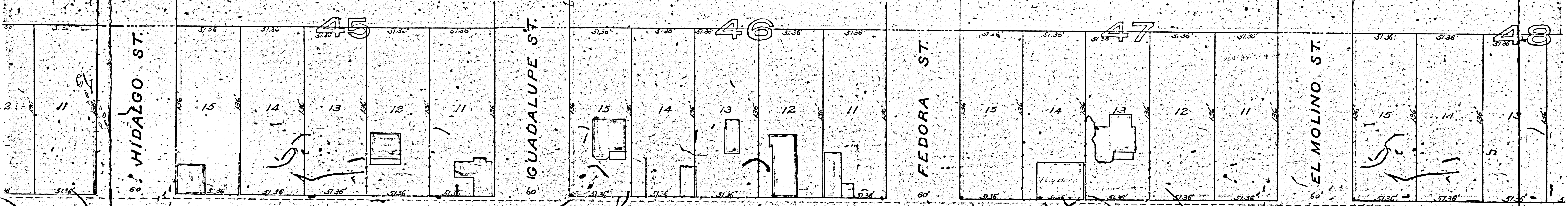
KRUTZ AND BRADSHAW'S SUBDIVISION OF THE SCHUNAGHER TRACT

Accounting, Impedance, Heart

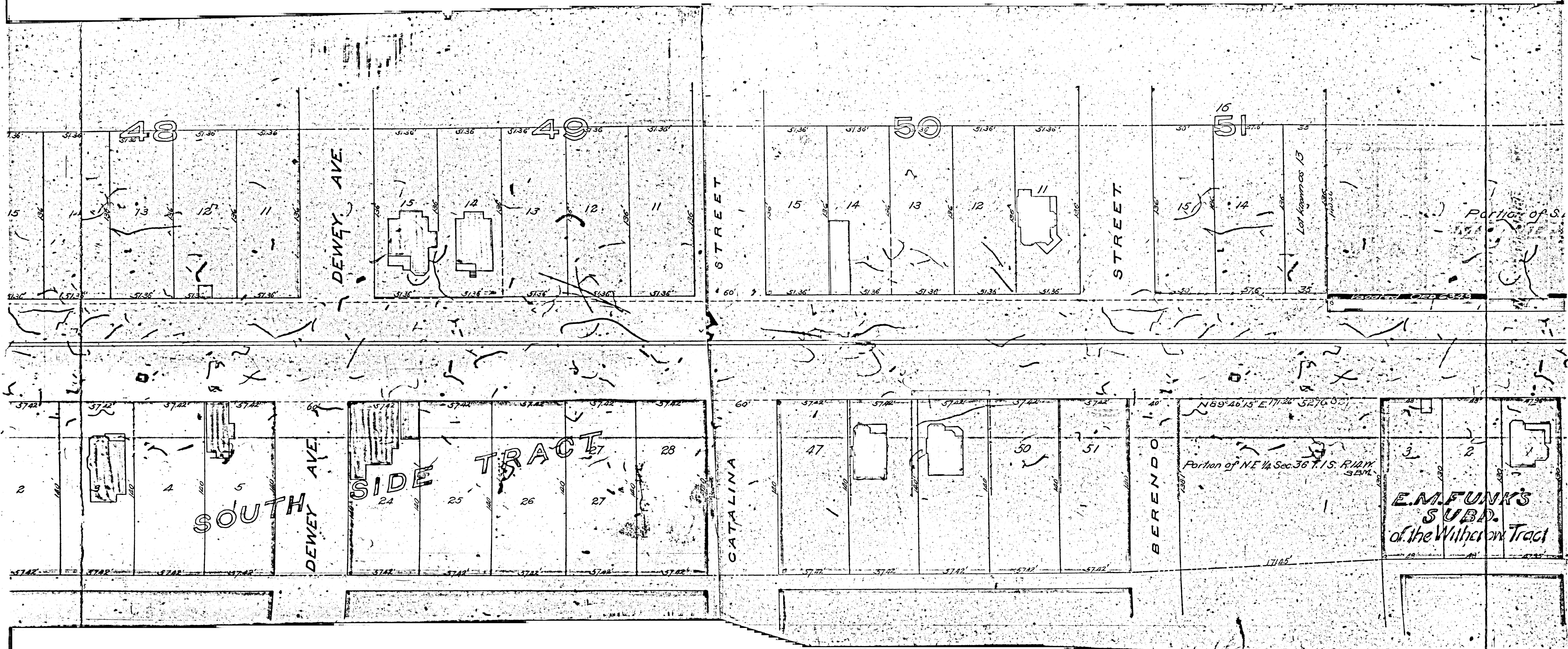
FM 17026

A 5 OF A 10

TRIC RAILWAY HOMESTEAD ASSOCIATION



F.M. 17026  
 A 6 OF A 10



F.M. 17026

A7 OF A10

Portion of S.E. 1/4 Sec. 25 T.15 R.12 W. S.B.M.

Portion of S.W. 1/4 Sec. 30 T.15 R.13 W. S.B.M.

NEW HAMPSHIRE AVE.

AVE. T.14 W.  
T.13 W.

VERMONT

VERMONT AVE.

REID ST.

MILLARD AVE.

E.M. FUNK'S  
SUBD.  
of the Witheron Tract

BUHLER TR.

TRACT

MILLARD

FM 17026

A 8 OF A 10



CLARK AND BRYAN'S LONE STAR TRACT

D. COS 6-108

D. COS 6-108

D. COS 6-108

PICO

BLVD ST.

TRACT

PACIFIC AVE.

SHERMAN

TRACT

MAGNOLIA AVE.

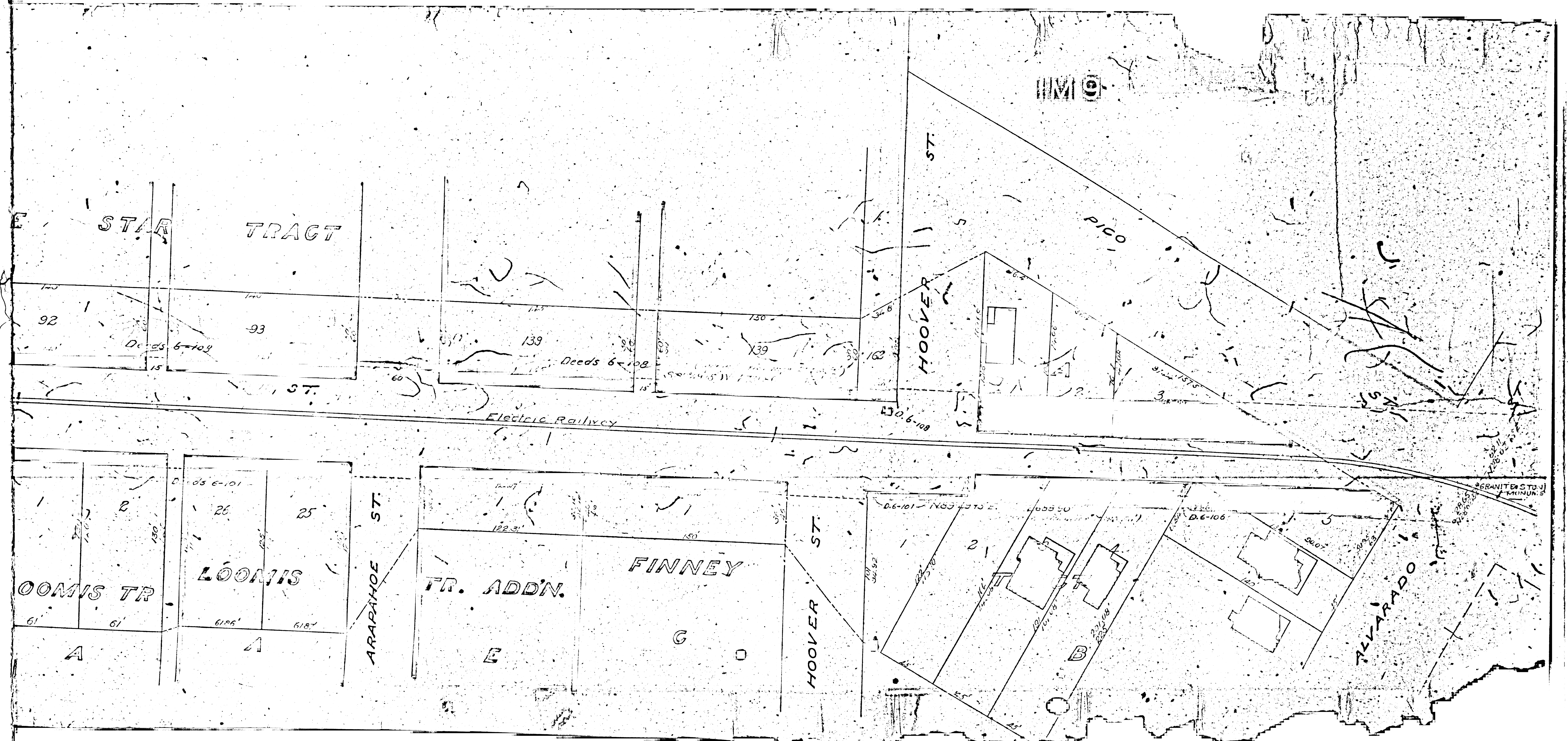
LOOMIS TR

LOOMIS

ARAPAHOE ST.

F.M. 17026

A 9 OF A 10



**FM 17026**

**A 10 OF A 10**