

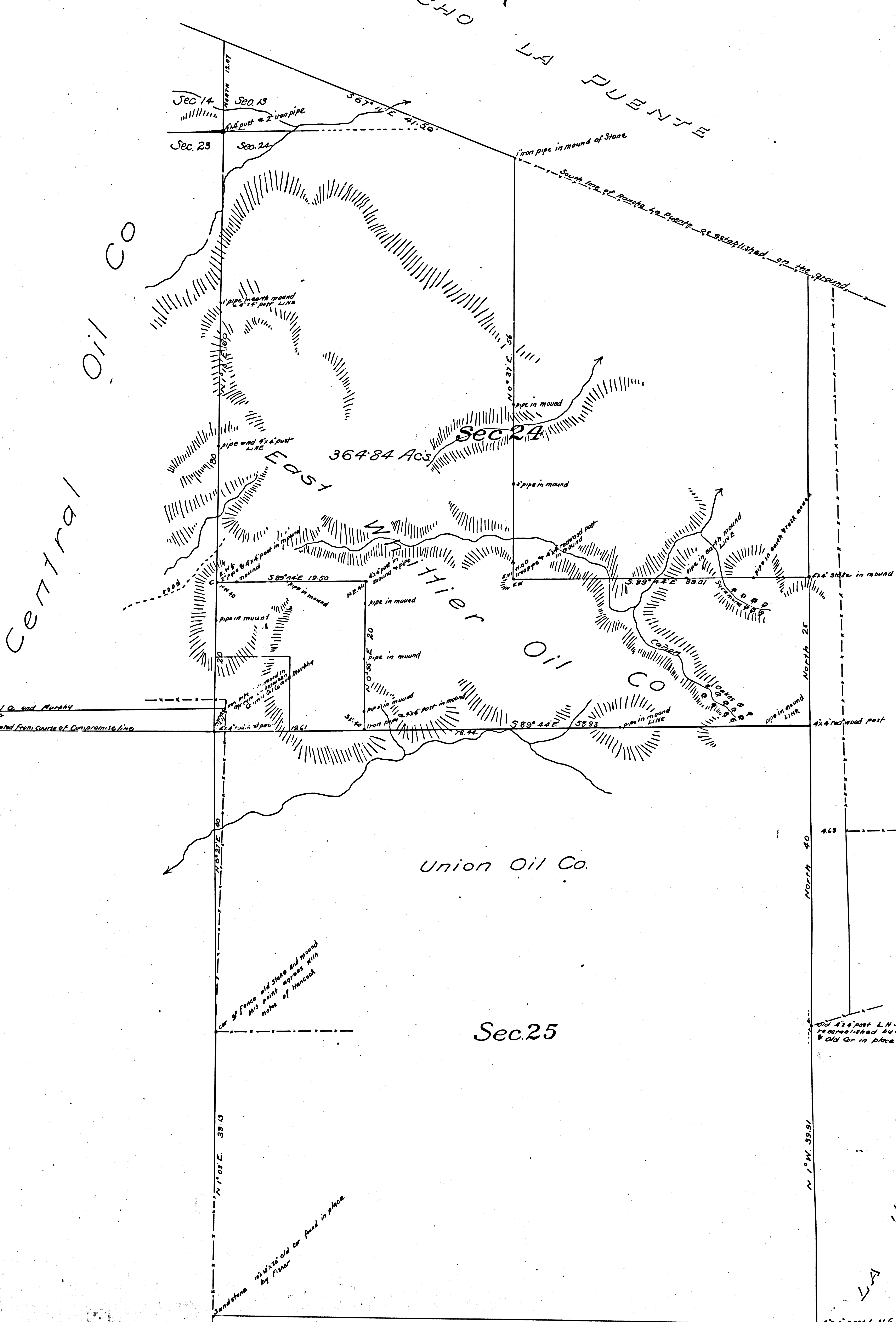
FILED MAP NO. 11041

FILED MAP NO. 11041

MAP  
showing lands  
of the  
**EAST WHITTIER OIL CO.**  
located in the  
County of Los Angeles  
California  
being fractional Section 13 and part of fractional Section 24  
T. 2 S. R. 11 W. S. B.M.

Scale 8 chains to one inch IM37 Surveyed June 1900 by  
True Courses Var. 14°30' East

FRANCO LA PUENTE  
G. Rowan Surveyor



22 23  
26 25

F.M.  
17041

FILED MAP NO. 11041

FILED MAP NO. 11041