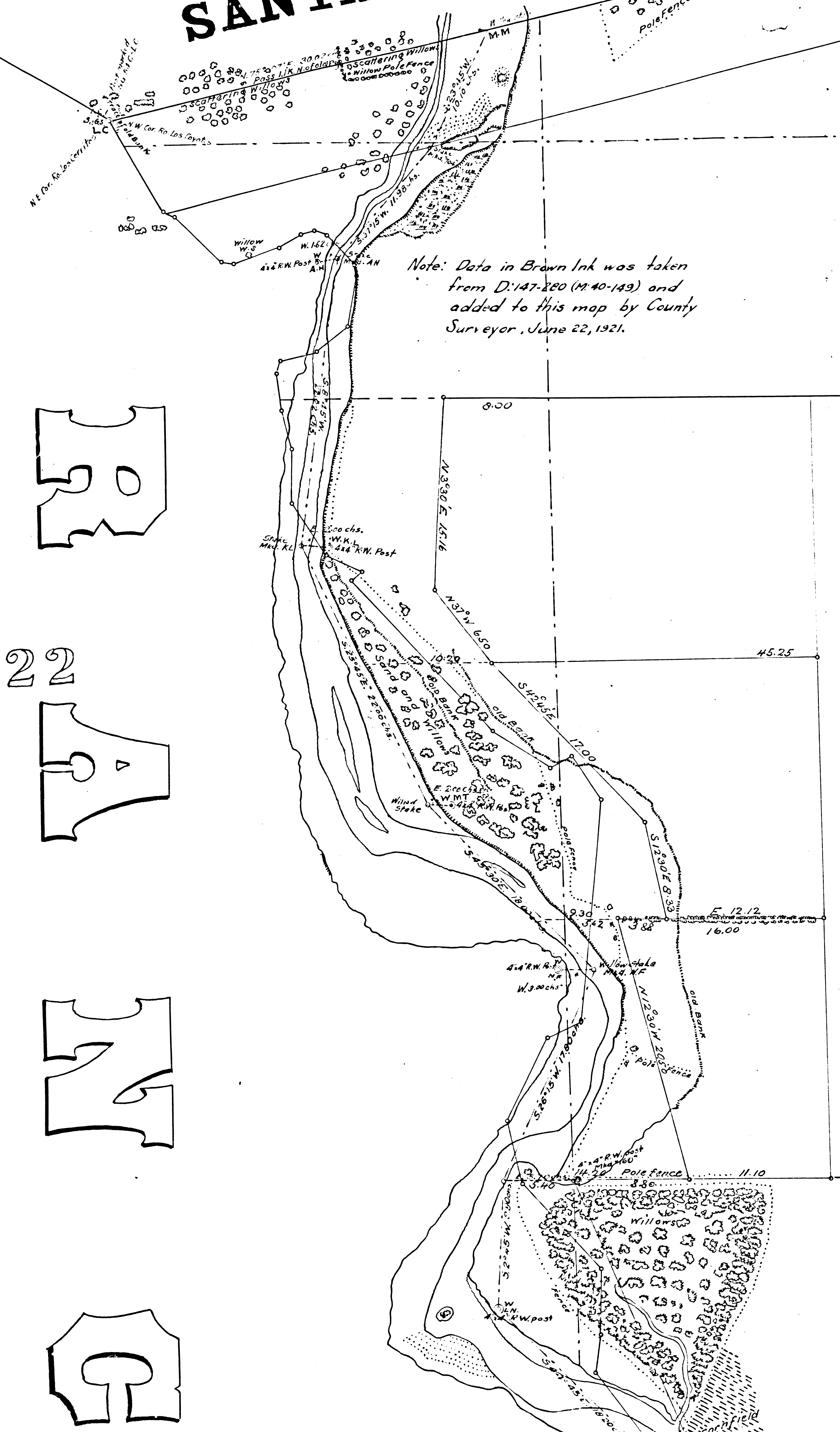


# RANCHO SANTA GERTRUDES.

A	1	OF	A	5
F.M.	17048			



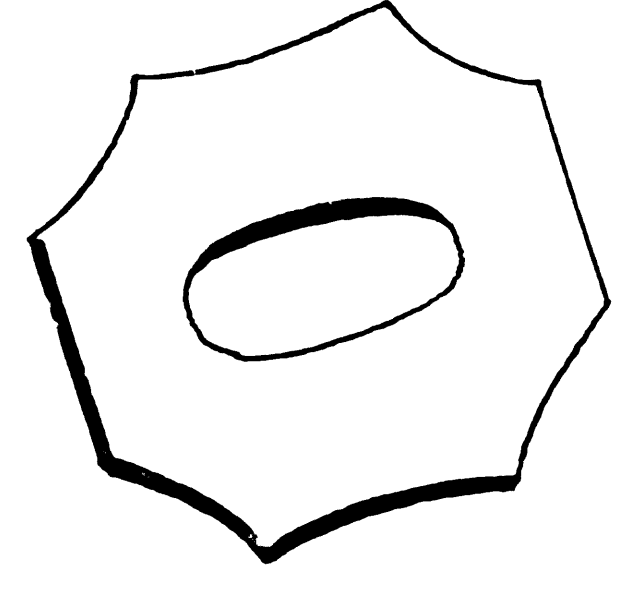
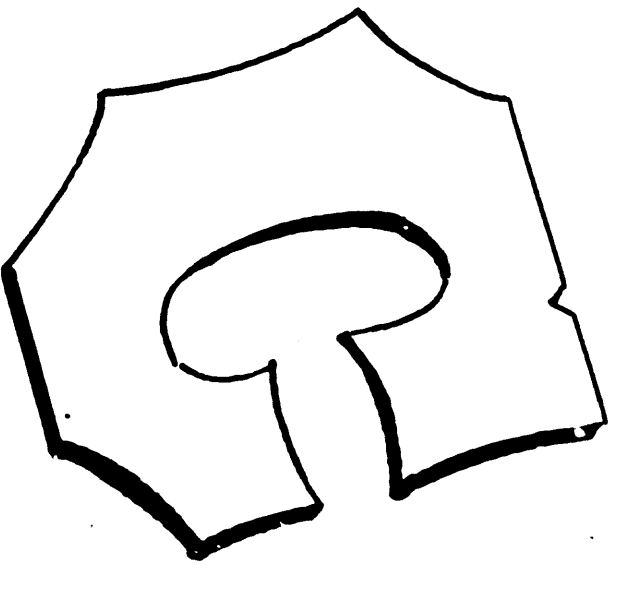
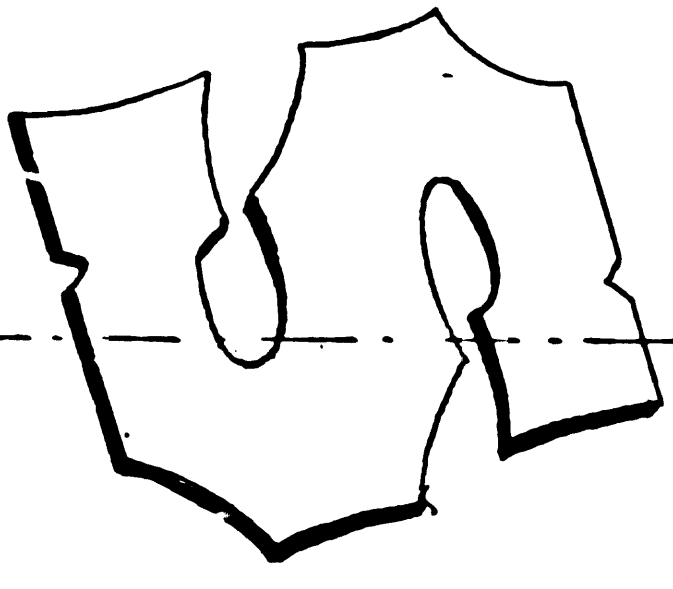
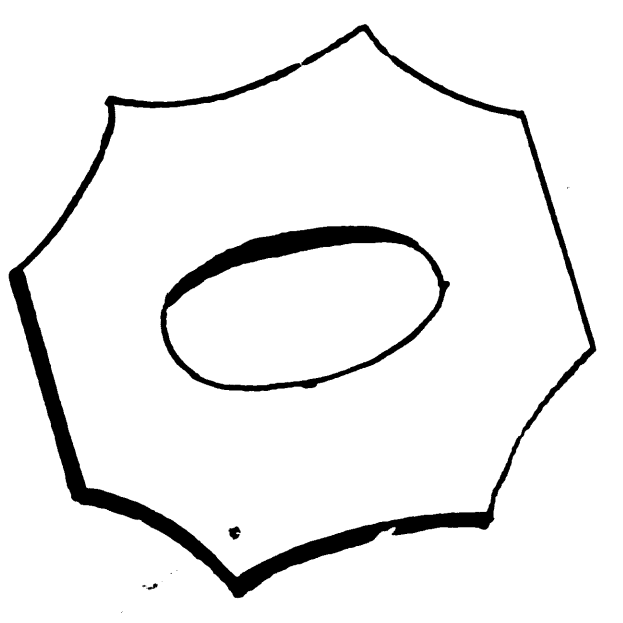
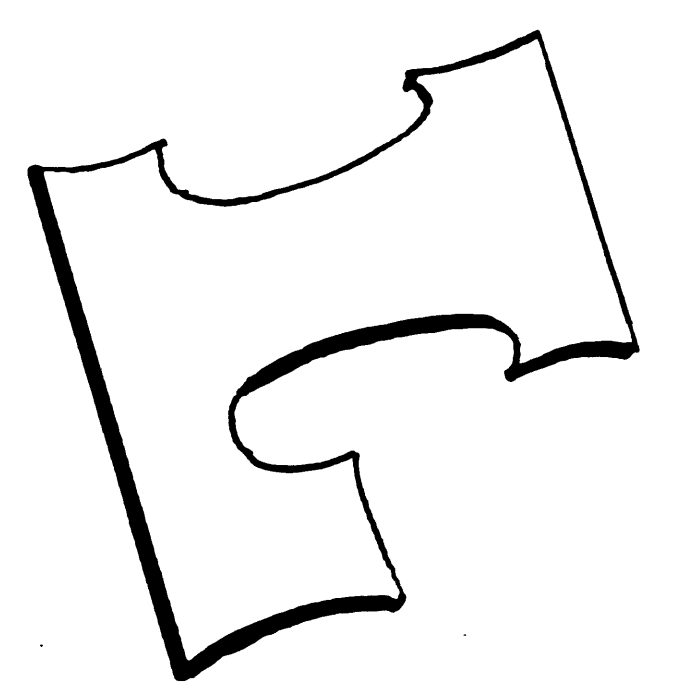
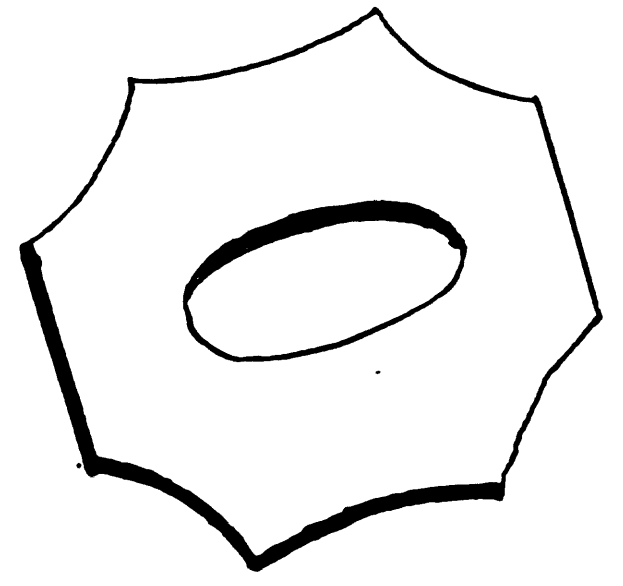
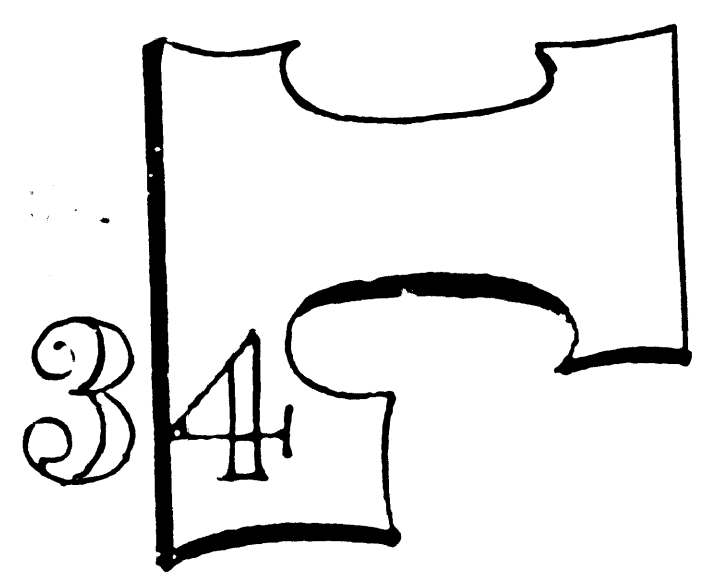
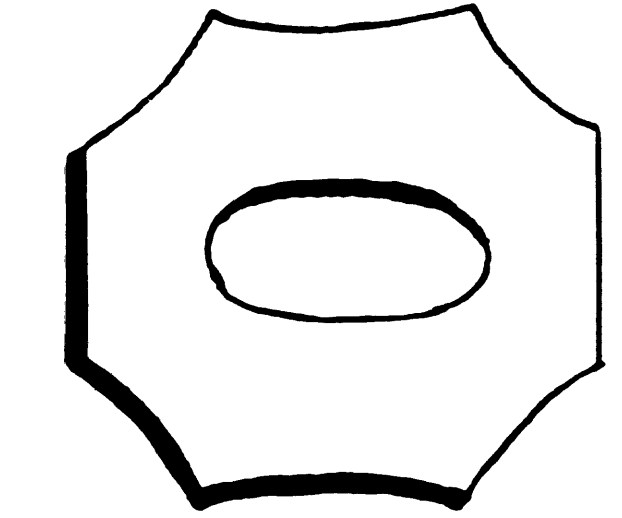
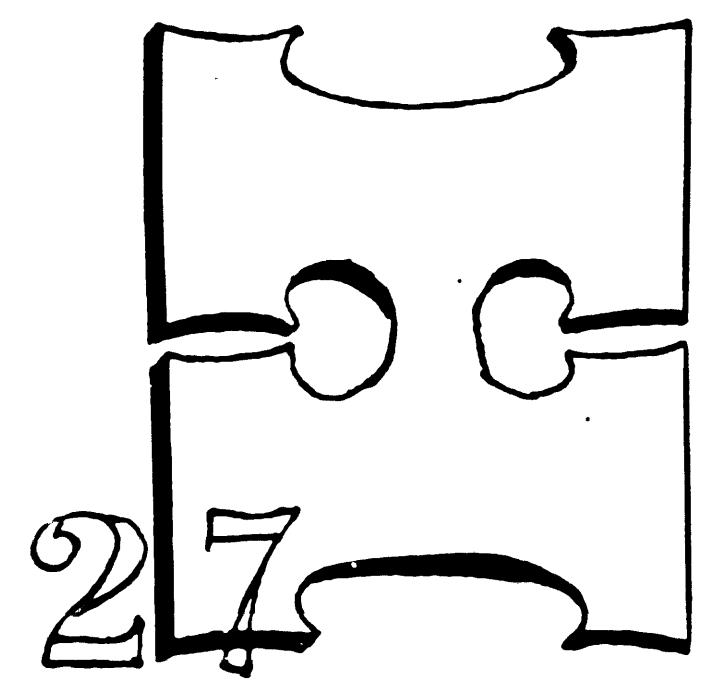
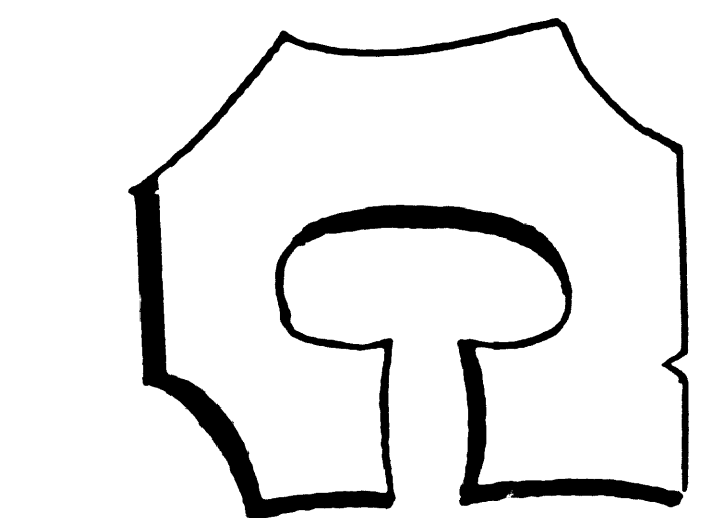
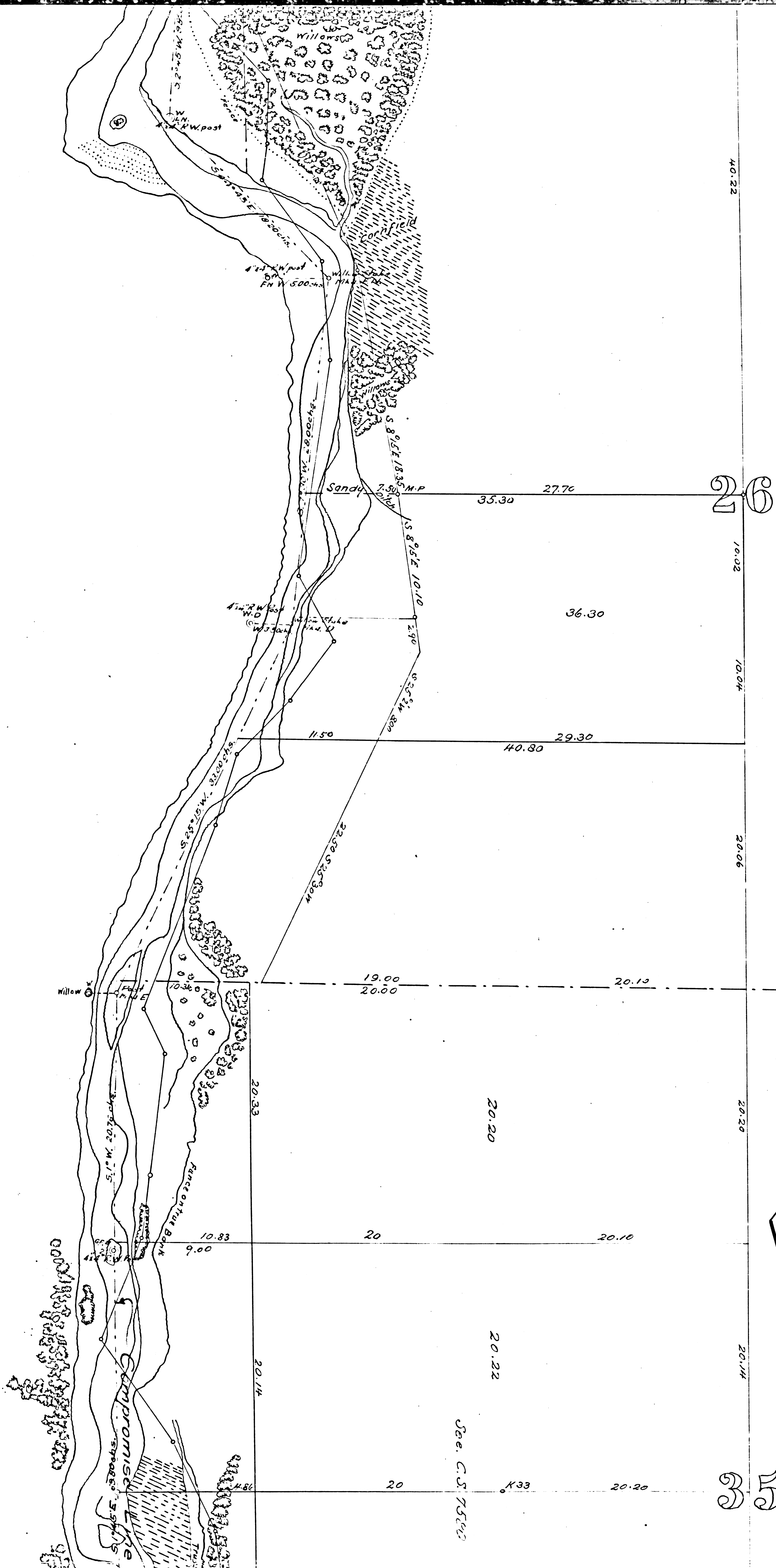
Note: Data in Brown Ink was taken from D:147-200 (M:40-143) and added to this map by County Surveyor, June 22, 1921.

22  
 R  
 A  
 N  
 C  
 H

23

R  
 A  
 N  
 C  
 H

A 2 OF A 5  
 F.M. 17048



A	3	OF	A	5
F	M	1	7	0
4	8			

34

0

2

3

2

0

1

0

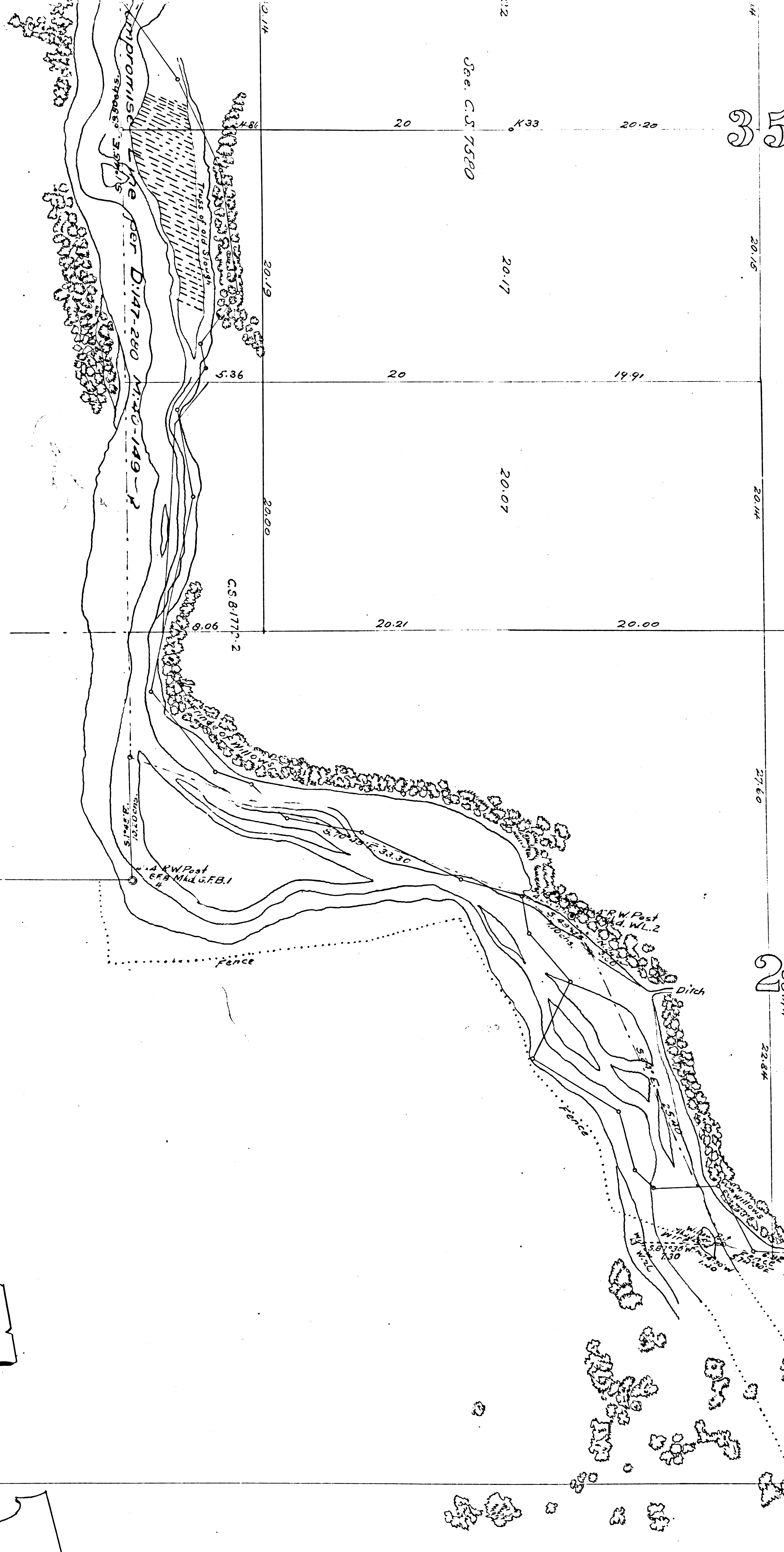
1

2

3

35

2



Note: Data in Brown Ink was taken from D:147-200 (N:140-149) and added to this map by County Surveyor June 22, 1921.

4

1

4

5

2

3

4

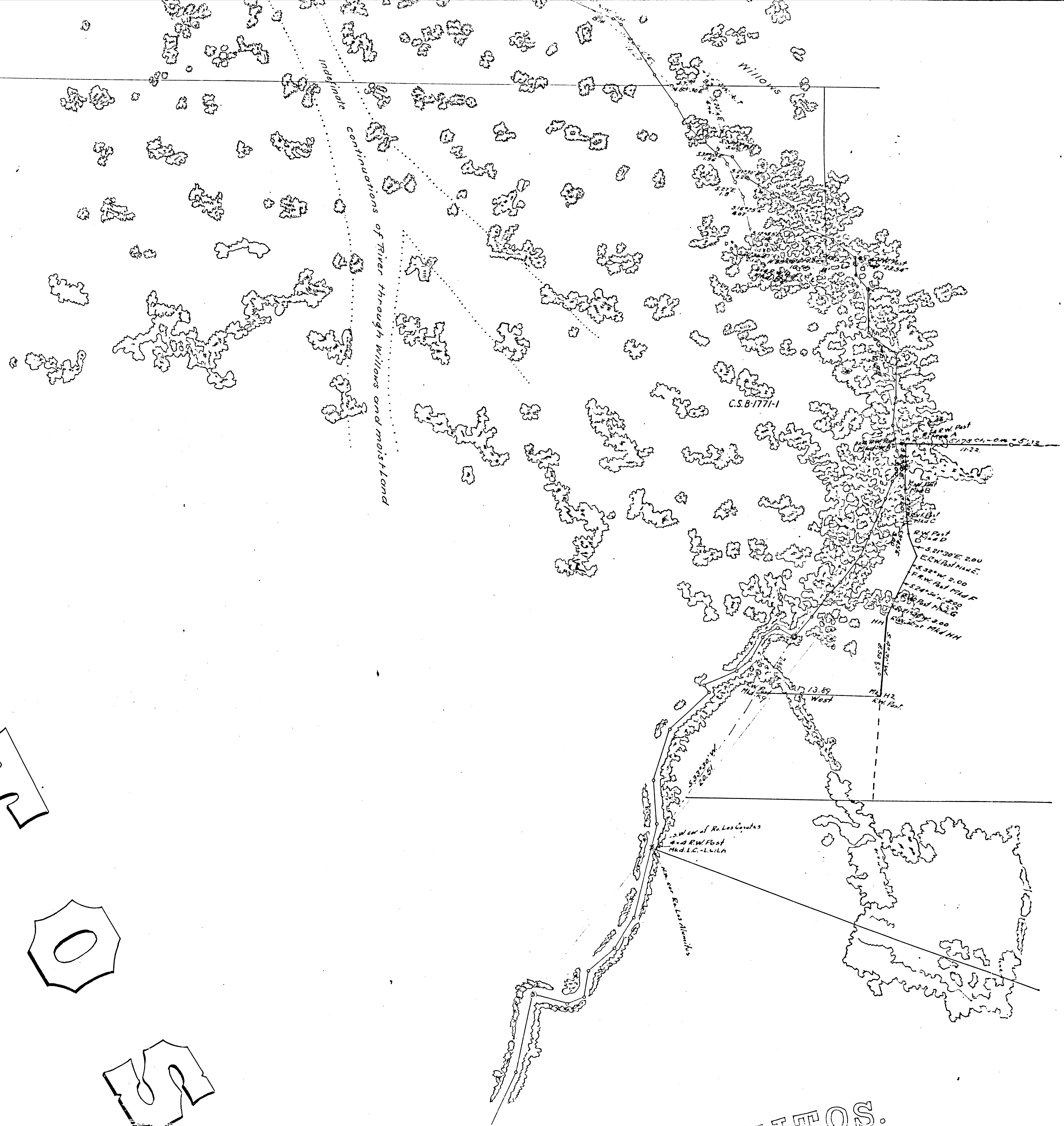
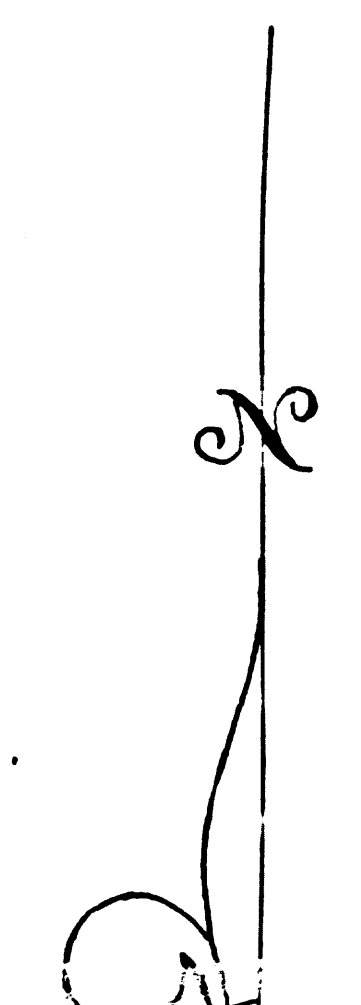
5

6

7

FM 17048

A4 OF A5



S. T. O. S.

RANCHO LOS ALAMITOS.

A 5 OF A 5  
F.M. 117048

227048

BOUNDARY  
BETWEEN  
RANCHOS LOS COYOTES  
AND  
LOS CERRITOS.

Surveyed December 1877  
by  
Charles T. Healy & G.M. Woodward.

FILED MAP NO. 11048

SCALE  
One Inch = 6 Chains

The Red line Meandering the River }  
indicates the agreed Boundary } See D:147-239 M:40-149  
the Boundary according to the Patent  
is indicated by Black lines thus -

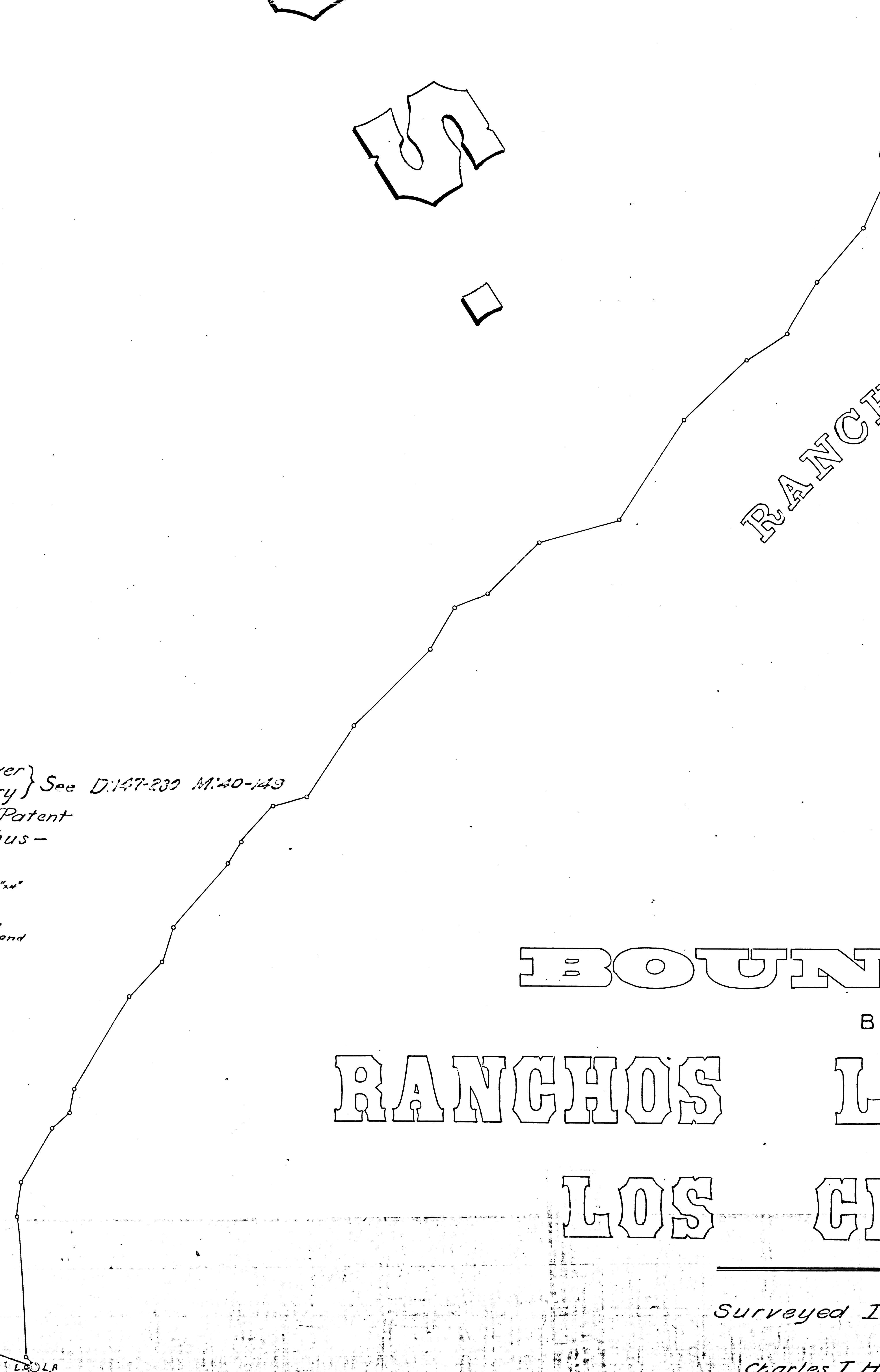
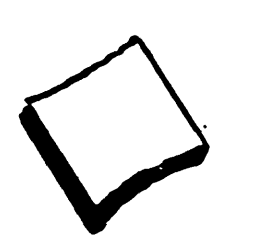
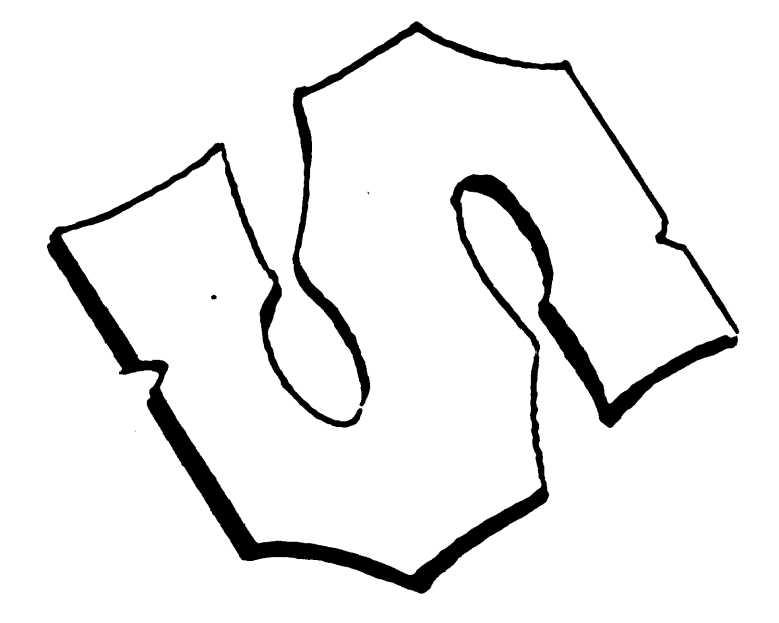
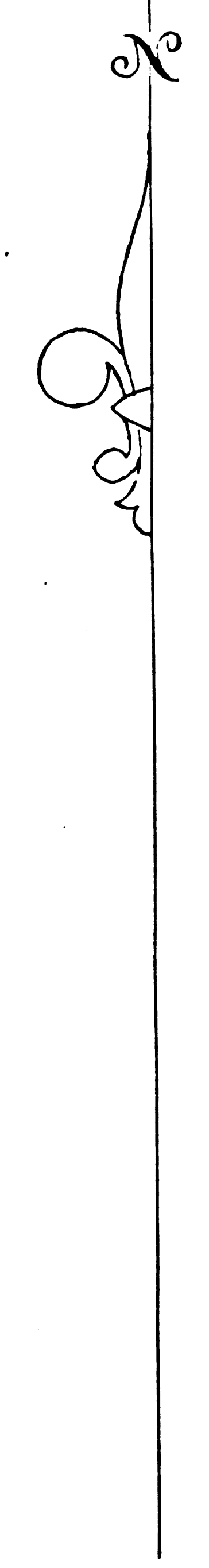
Double Red Rings indicate location of Redwood Posts 3' x 4' x 4'  
With Pyramidal Tops and painted white set by us  
This Map is identical in every respect with  
another in possession of J. Bizby & Co and our description  
of the Agreed Boundary bet. the Ranchos Los Coyotes and  
Los Cerritos refers to Either both of these Maps

Charles T. Healy Geo. Woodward

IM 35  
IM 31

FILED MAP NO. 11048

Surveyed by Charles T. Healy & G.M. Woodward



Los Coyotes to Rancho

L.S.O.L.A.